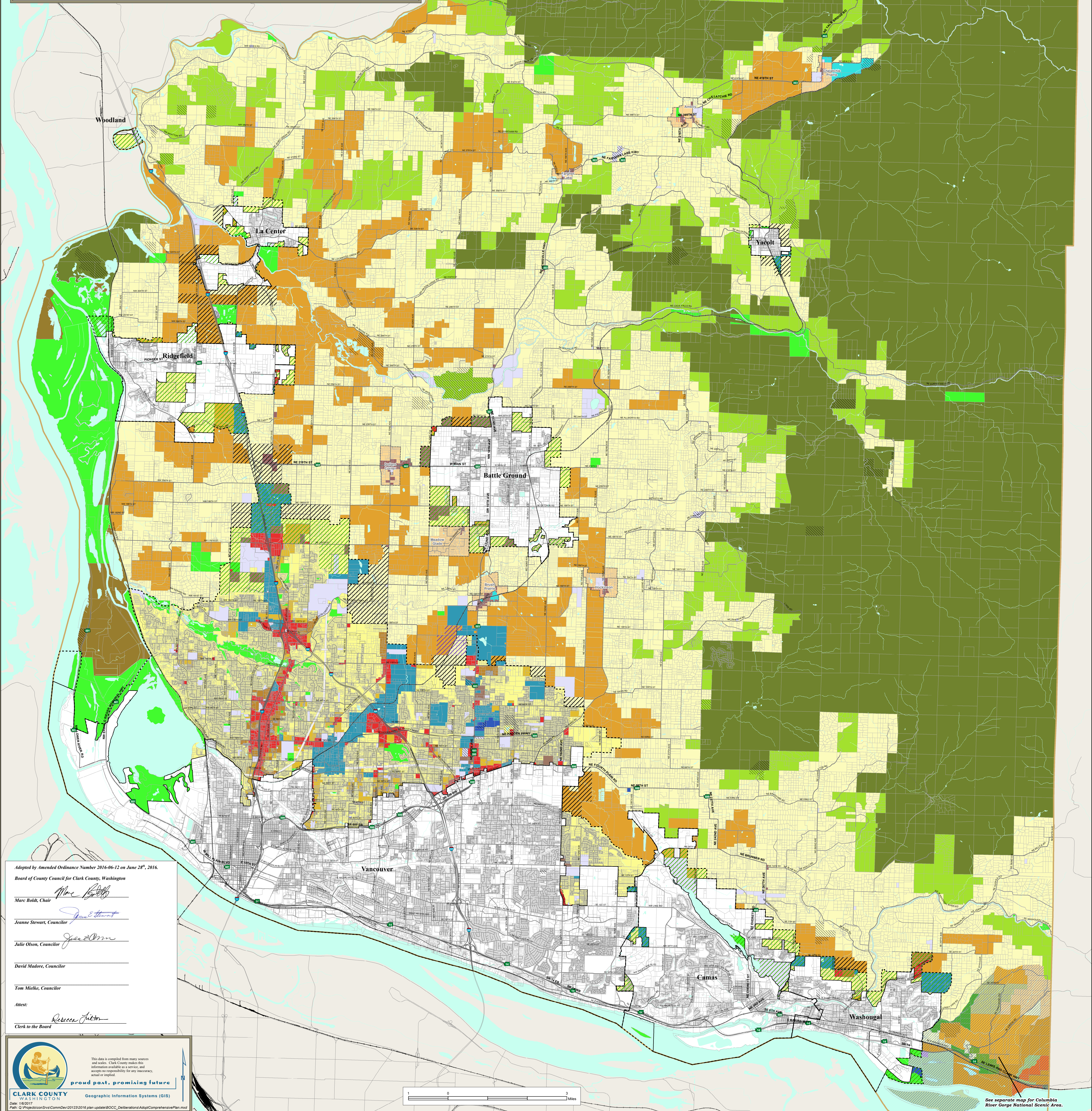


County/UGA Comprehensive Plan Clark County, Washington

URBAN	CRGNSA
Urban Low Density Residential	Gorge Residential 5
Urban Medium Density Residential	Gorge Residential 10
Urban High Density Residential	Gorge Small-scale Agriculture
Mixed Use	Gorge Large-scale Ag 40
Commercial	Gorge Large-scale Ag 80
Industrial	Gorge SMA Agriculture
Heavy Industrial	Gorge SMA Open Space
Public Facility	Gorge SMA Federal Forest
Bonneville Power Administration	Gorge SMA Non-Federal Forest
RURAL/RESOURCE	Gorge Small Woodland 20
Rural	Gorge Small Woodland 40
Rural Center Residential	Gorge Public Recreation
Rural Commercial	OVERLAY
Rural Industrial	Urban Reserve
Agriculture	Urban Holding
Agri-Wildlife	Railroad Industrial Urban Reserve
Parks/Open Space	Surface Mining
Forest Tier 1	Columbia River Gorge Scenic Area
Forest Tier 2	Rural Center Mixed Use
Airport	Urban Growth Area (UGA) Boundary
Water	City Limits
	Rural Center



Adopted by Amended Ordinance Number 2016-06-12 on June 28th, 2016.
Board of County Council for Clark County, Washington

Marc Boldt, Chair
 Jeanne Stewart, Councilor
 Julie Olson, Councilor
 David Madore, Councilor
 Tom Mielke, Councilor

Attest:
 Rebecca J. Fisher
 Clerk to the Board

CLARK COUNTY
 WASHINGTON
 proud past, promising future

Geographic Information Systems (GIS)
 Date: 1/6/2017
 Path: C:\Projects\GIS\CompPlan\2012\2016\plan update\BOCC_Deliberation\Adopt\ComprehensivePlan.mxd

See separate map for Columbia River Gorge National Scenic Area.