

# CLARK COUNTY STAFF REPORT

**DEPARTMENT:** Public Works, Operations

**DATE:** May 5, 2020

**REQUESTED ACTION:** Adopt an ordinance restricting load limits on three county bridges and updating load limits on eight previously restricted county bridges.

\_\_\_\_\_ Consent      X   Hearing    \_\_\_\_\_ County Manager

---

## BACKGROUND

On November 15, 2013, the US Department of Transportation, Federal Highway Administration (FHWA) sent out a directive requiring local agencies to update load-rating evaluations on all National Bridge Inventory (NBI) Bridges. Per the directive, the updated load-rating evaluations included new truck configurations called Special Hauling Vehicles (SHV). Following the FHWA directive, the Fixing America's Surface Transportation (FAST) Act required that Emergency Vehicles, Type EV2 and Type EV3, also be evaluated for each bridge.

Considering the additional requirements included in the FHWA directive and FAST Act, Public Works hired a bridge engineering consultant firm to perform load-rating evaluations. In December 2018, June 2019, and November 2019, Public Works staff attended council hearings to establish restrictions on a total of fifteen bridges based upon these updated load ratings.

Based upon findings from the consulting firm and Clark County regarding load-ratings, legally operating SHV and EV loading configurations must be restricted on three additional county bridges and updated on eight previously restricted bridges as detailed below in accordance with 23 CFR 650.313(c) and RCW 47.48.010.

### I. New County Bridge Restrictions:

1. Bridge No. 33 Pleasant Valley [NE 50th Ave. over Salmon Creek, County Atlas Pg. 27]:
  - a. EV2 26 Tons
  - b. EV3 20 Tons
  - c. SU5 27 Tons
  - d. SU6 27 Tons
  - e. SU7 27 Tons
  
2. Bridge No. 229 172nd Avenue [NE 172nd Ave. over China Ditch, County Atlas Pg. 19]:
  - a. EV3 39 Tons
  
3. Bridge No. 275 Van Atta [NE 112th Ave. over Salmon Creek, County Atlas Pg. 28]:
  - a. EV3 29 Tons
  - b. SU4 25 Tons
  - c. SU5 27 Tons
  - d. SU6 27 Tons
  - e. SU7 30 Tons

## II. Updates to Previously Restricted County Bridges:

1. Bridge No. 12 Knapps Station [NW Krieger Rd. over Whipple Creek, County Atlas Pg. 24]:
  - a. SU6 30 Tons instead of 28 Tons
  - b. SU7 31 Tons instead of 29 Tons
2. Bridge No. 30 Flatwood [NE 239th St. over Mill Creek, County Atlas Pg. 36]:
  - a. EV3 35 Tons instead of 37 Tons
3. Bridge No. 116 Lucia Falls [NE Hantwick Rd. over East Fork Lewis River, County Atlas Pg. 47]:
  - a. EV3 37 Tons instead of 38 Tons
4. Bridge No. 201 Brush Prairie [NE 156th St. over Salmon Creek, County Atlas Pg. 27]:
  - a. EV3 29 Tons instead of 33 Tons
5. Bridge No. 212 JC Ward [NE 182nd Ave. over Salmon Creek, County Atlas Pg. 29]:
  - a. SU4 24 Tons instead of 21 Tons
  - b. SU5 25 Tons instead of 23 Tons
  - c. SU6 28 Tons instead of 26 Tons
  - d. SU7 32 Tons instead of 29 Tons
6. Bridge No. 213 Morgan [NE 182nd Ave. over Morgan Creek, County Atlas Pg. 29]:
  - a. EV2 22 Tons
  - b. EV3 14 Tons
7. Bridge No. 222 None [NE 167th Ave. over Morgan Creek, County Atlas Pg. 28]:
  - a. EV3 24 Tons
  - b. SU5 29 Tons instead of 26 Tons
  - c. SU6 29 Tons instead of 26 Tons
  - d. SU7 30 Tons instead of 28 Tons
8. Bridge No. 299 Landon [NE CC Landon Rd. over Yacolt Creek, County Atlas Pg. 48]:
  - a. EV3 23 Tons

### **COUNCIL POLICY IMPLICATIONS**

None.

### **ADMINISTRATIVE POLICY IMPLICATIONS**

In order to comply with the FHWA directive requiring load restriction signs to be posted within 30 days of receiving notice of critical findings, the council previously approved Resolution No. 2019-11-14 authorizing the County Engineer to post updated signs at applicable bridges prior to action by the Council, with the caveat that the Council would be informed of the postings in a timely fashion. The above-listed vehicle load restrictions have already been posted at appropriate bridges. Council adoption of the ordinance will codify the updated bridge load restrictions into the Clark County Code.

**BUDGET IMPLICATIONS**

YES	NO	
X		Action falls within existing budget capacity.
	X	Action falls within existing budget capacity but requires a change of purpose within existing appropriation
	X	Additional budget capacity is necessary and will be requested at the next supplemental. If YES, please complete the budget impact statement. If YES, this action will be referred to the county council with a recommendation from the county manager.


**BUDGET DETAILS**

Local Fund Dollar Amount	N/A
Grant Fund Dollar Amount	N/A
Account	County Road Fund 1012
Company Name	N/A


**DISTRIBUTION:**

Council staff will post all staff reports to the county website, [www.clark.wa.gov/council-meetings](http://www.clark.wa.gov/council-meetings)


Attachments: (1) Ordinance; (2) Truck Type & Maximum Load Document; (3) Detour Plans; and (4) PowerPoint

  
 Les MacDonald, PE  
 Public Works Deputy Director

  
 Ahmad Qayoumi, PE  
 Public Works Director/County Engineer

for   
 Cherie Sabug  
 Interim Finance Division Manager

Primary Staff Contact: Rani Jaafar, Ext. 1618

APPROVED:   
 CLARK COUNTY, WASHINGTON  
 CLARK COUNTY COUNCIL

DATE: May 6, 2020

SR# \_\_\_\_\_



ORDINANCE NO. 2020-05-02

An ordinance to establish load limits upon certain bridges in Clark County.

**WHEREAS**, RCW 47.48.010 grants local jurisdictions the authority to restrict maximum loading on County owned bridges based on load rating evaluations and other engineering studies;

**WHEREAS**, the American Association of State Highway Transportation Officials (AASHTO) created six (6) new truck loading configurations that require engineering evaluation on individual bridges to determine maximum loading that the bridge can sustain without restriction;

**WHEREAS**, the AASHTO designated truck configurations required to be evaluated by a bridge load rating evaluation have the following designations: Emergency Vehicles (EV2 & EV3); Special Hauling Vehicles (SU4, SU5, SU6, & SU7) and Notional Rating Load (NRL);

**WHEREAS**, the Clark County Department of Public Works hired a bridge engineer to evaluate seventeen (17) bridges under this standard, along with three (3) additional bridges that were previously evaluated in the absence of the six (6) new bridge load configurations;

**WHEREAS**, the bridge engineer's evaluation revealed the need to place the following load limits on the corresponding bridges to reduce damage to the bridges, thus extending their life and protecting the public's investment:

I. New County Bridge Restrictions:

1. Bridge No. 33 Pleasant Valley [NE 50th Ave. over Salmon Creek, County Atlas Pg. 27]:
  - a. EV2 26 Tons
  - b. EV3 20 Tons
  - c. SU5 27 Tons
  - d. SU6 27 Tons
  - e. SU7 27 Tons
2. Bridge No. 229 172nd Avenue [NE 172nd Ave. over China Ditch, County Atlas Pg. 19]:
  - a. EV3 39 Tons
3. Bridge No. 275 Van Atta [NE 112th Ave. over Salmon Creek, County Atlas Pg. 28]:
  - a. EV3 29 Tons
  - b. SU4 25 Tons
  - c. SU5 27 Tons
  - d. SU6 27 Tons
  - e. SU7 30 Tons

II. Updates to Previously Restricted County Bridges:

1. Bridge No. 12 Knapps Station [NW Krieger Rd. over Whipple Creek, County Atlas Pg. 24]:
  - a. SU6 30 Tons instead of 28 Tons
  - b. SU7 31 Tons instead of 29 Tons

2. Bridge No. 30 Flatwood [NE 239th St. over Mill Creek County Atlas Pg. 36]:
  - a. EV3 35 Tons instead of 37 Tons
3. Bridge No. 116 Lucia Falls [NE Hantwick Rd. over East Fork Lewis River, County Atlas Pg. 47]:
  - a. EV3 37 Tons instead of 38 Tons
4. Bridge No. 201 Brush Prairie [NE 156th St. over Salmon Creek, County Atlas Pg. 27]:
  - a. EV3 29 Tons instead of 33 Tons
5. Bridge No. 212 JC Ward [NE 182nd Ave. over Salmon Creek, County Atlas Pg. 29]:
  - a. SU4 24 Tons instead of 21 Tons
  - b. SU5 25 Tons instead of 23 Tons
  - c. SU6 28 Tons instead of 26 Tons
  - d. SU7 32 Tons instead of 29 Tons
6. Bridge No. 213 Morgan [NE 182nd Ave. over Morgan Creek, County Atlas Pg. 29]:
  - a. EV2 22 Tons
  - b. EV3 14 Tons
7. Bridge No. 222 None [NE 167th Ave. over Morgan Creek, County Atlas Pg. 28]:
  - a. EV3 24 Tons
  - b. SU5 29 Tons instead of 26 Tons
  - c. SU6 29 Tons instead of 26 Tons
  - d. SU7 30 Tons instead of 28 Tons
8. Bridge No. 299 Landon [NE CC Landon Rd. over Yacolt Creek, County Atlas Pg. 48]:
  - a. EV3 23 Tons

**WHEREAS**, the FHWA and WSDOT regulations require the County engineer to post signage regarding the load limits noted above, in accordance with 23 CFR 650.313(e) and RCW 47.48.010, within 30 days of receiving findings of a bridge load rating evaluations; and,

**WHEREAS**, the County Council previously adopted Resolution No. 2019-11-14 that authorized the County Engineer to post restrictions prior to presenting the same to Council, if doing so was necessary to meet the 30 day posting requirement mentioned above, as long as the postings were brought to the attention of the Council in a timely fashion; and

**WHEREAS**, Public Works, by and through this ordinance, has brought the new load restrictions before this Council for amendment of the code in accord with the actual posted limitations.

**NOW THEREFORE**, it is ordered as follows:

**Section 1. Amendatory.** Sec. 7 of Ord. 1991-07-13, as most recently amended by Sec. 1 of Ord. 2019-11-04 and codified as CCC 10.08A.070 is hereby amended to read:

10.08A.070 Emergency restrictions—Maximum gross load and/or speed.

Notwithstanding the provisions of Sections 10.08A.040 and 10.08A.050, whenever any county road by reason of rain, snow, climatic or other conditions will be seriously damaged or destroyed unless the permissible weight and/or speed of vehicles traveling thereon is reduced, the County Engineer may enforce the following restrictions on all county roads throughout Clark County:

- (1) **Weight.**
  - (a) All motor vehicles will be limited to fifty percent (50%) of the gross vehicle weight authorized pursuant to RCW 46.44.041 as amended, not to exceed three hundred (300) pounds per inch of manufacturer-rated tire width for any axle; and/or
  - (b) All loads must be evenly distributed.
- (2) Speed limits may be reduced as necessary to minimize road damage.
- (3) The following weight restrictions apply to the following bridges:
  - (a) Bridge No. 6 Gibbons Creek [SE Evergreen Way over Gibbons Creek, County Atlas Pg. 4]:  
EV3 29 Tons
  - (b) Bridge No. 96 Rock Creek [Rock Creek Rd. over Rock Creek, County Atlas Pg. 46]:  
EV3 34 Tons
  - (c) Bridge No. 168 Matney [NE 68th St. over Matney Creek, County Atlas Pg. 20]:  
SU4 19 Tons  
SU5 19 Tons  
SU6 18 Tons  
SU7 19 Tons  
EV2 20 Tons  
EV3 14 Tons

(d) Bridge No. 213 Morgan [NE 182nd Ave. over Morgan Creek, County Atlas Pg. 29]:

SU4 19 Tons

SU5 19 Tons

SU6 18 Tons

SU7 19 Tons

EV2 22 Tons

EV3 14 Tons

(e) Bridge No. 217 Venersborg [NE 209th St. over Salmon Creek, County Atlas Pg. 38]:

SU7 33 Tons

EV3 25 Tons

(f) Bridge No. 222 None [NE 167th Ave. over Mud Creek, County Atlas Pg. 28]:

EV3 24 Tons

SU5 ((26)) 29Tons

SU6 ((26)) 29 Tons

SU7 ((28)) 30Tons

(g) Bridge No. 299 Landon [CC Landon Rd. over Yacolt Creek, County Atlas Pg. 48]:

EV3 23 Tons

SU6 30 Tons

SU7 33 Tons

(h) Bridge No. 30 Flatwood [NE 239th St. over Mill Creek [EV3—Max 37 Tons], County Atlas Pg. 36]:

EV3 ((37)) 35 Tons

(i) Bridge No. 116 Lucia Falls [Hantwick Rd. over East Fork Lewis River, County Atlas Pg. 47]:

EV3 ((38)) 37 Tons

(j) Bridge No. 201 Brush Prairie [NE 156th St. over Salmon Creek, County Atlas Pg. 27]:

EV3 ((33)) 29 Tons

(k) Bridge No. 212 JC Ward [NE 182nd Ave. over Salmon Creek, County Atlas Pg. 29]:

SU4 ((21)) 24 Tons

SU5 ((23)) 25 Tons

SU6 ((26)) 28 Tons

SU7 ((29)) 32 Tons

EV3 37 Tons

(l) Bridge No. 11 Whipple Creek [NW 179th St. over Whipple Creek, County Atlas Pg. 25]:

EV3 28 Tons

(m) Bridge No. 12 Knapps Station [NW Krieger Rd. over Whipple Creek, County Atlas Pg. 24]:

EV3 25 Tons

SU6 ((28)) 30 Tons

SU7 ((29)) 31 Tons

(n) Bridge No. 63 Carson [NE 67th Ave. over Mills Creek, County Atlas Pg. 36]:

EV2 16 Tons

EV3 15 Tons

SU4 20 Tons

SU5 21 Tons

SU6 20 Tons

SU7 20 Tons

(o) Bridge No. 169 Matney South [NE 232nd Ave. over Matney Creek, County Atlas Pg. 20]:

EV2 15 Tons

EV3 18 Tons

SU4 24 Tons

SU5 24 Tons

SU6 24 Tons

SU7 26 Tons

(p) Bridge No. 33 Pleasant Valley [NE 50th Ave. over Salmon Creek, County Atlas Pg. 27]:

EV2 26 Tons

EV3 20 Tons

SU5 27 Tons

SU6 27 Tons

SU7 27 Tons

(q) Bridge No. 229 172nd Avenue [NE 172nd Ave. over China Ditch, County Atlas Pg. 19]:

EV3 39 Tons

(r) Bridge No. 275 Van Atta [NE 112th Ave. over Salmon Creek, County Atlas Pg. 28]:

EV3 29 Tons

SU4 25 Tons

SU5 27 Tons

SU6 27 Tons

SU7 30 Tons

The SU and EV abbreviations above are AASHTO designations for certain vehicle types.



**Section 2. Enforcement.** The Washington State Patrol is requested to enforce the provisions of this ordinance. The Sheriff of Clark County is directed to enforce the provisions of this Ordinance. The County Engineer is directed to erect and maintain the necessary signs in accordance with the Uniform Standards adopted by Washington State Department of Transportation.

**Section 3. Effective Date.** This ordinance shall be effective on the 10th day following adoption.

**Section 4. Instructions to Clerk.** The Clerk of the Council shall:


- (1) Record a copy of this Ordinance with the Clark County Auditor;
- (2) Cause notice of adoption of this Ordinance to be published forthwith, pursuant to Clark County Code 1.02.140(7); and
- (3) Provide a copy of this Ordinance to Code Publishing with instructions to publish.

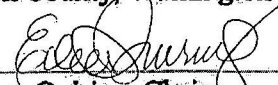
**Section 5. Direction to Code Reviser.** Sections 2-6 are not subject to codification.

**Section 6. Roll Call Vote.** The following persons voted in favor of adopting the above ordinance,  
Temple Lentz; Julie Olson; John Blom;  
Gary Medviga; & Eileen Quiring.


The following persons voted in opposition to the adoption of the above ordinance,  
\_\_\_\_\_  
\_\_\_\_\_


ADOPTED THIS 6th DAY OF May, 2020

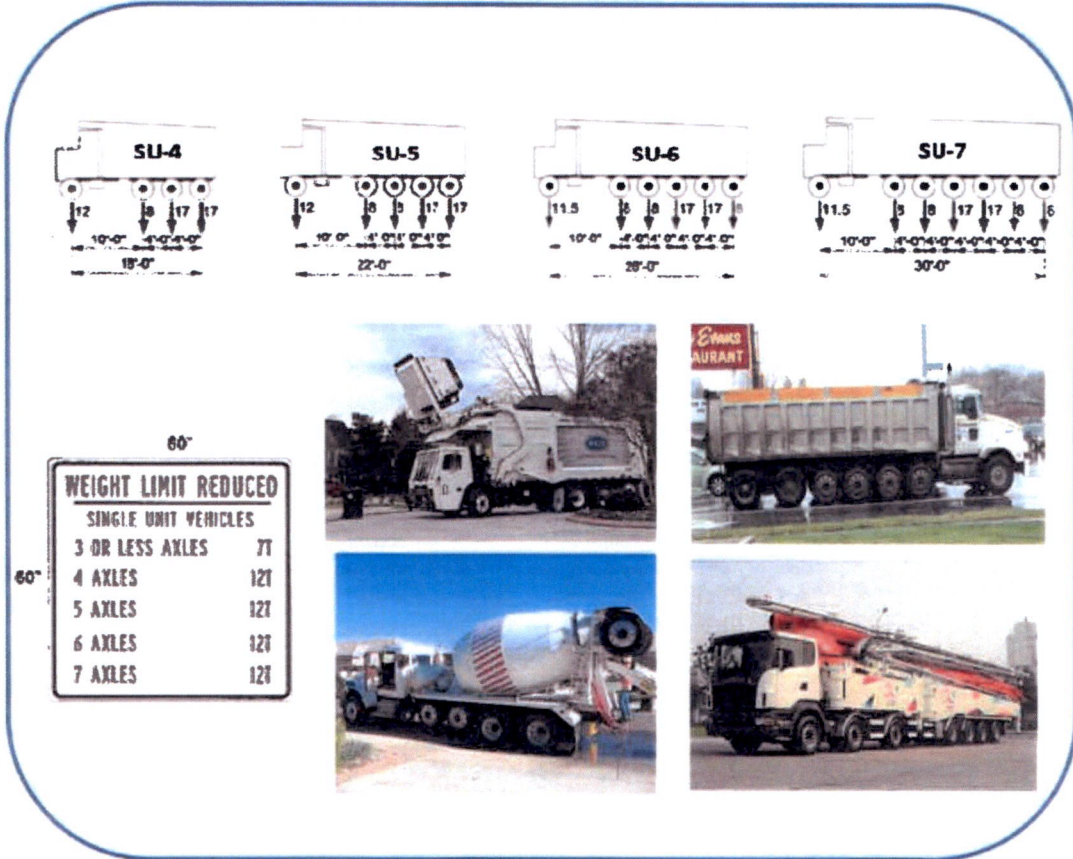
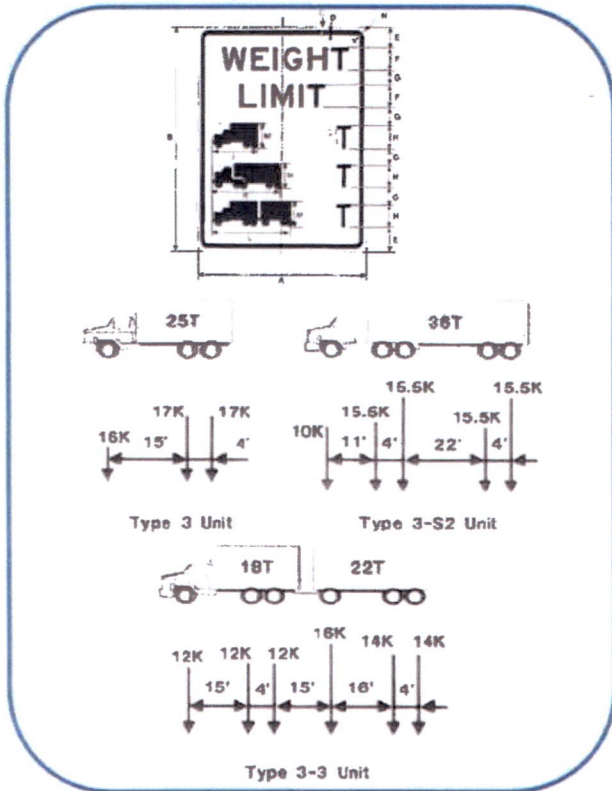
ATTEST:  
  
\_\_\_\_\_  
Clerk of the Council

County Council  
Clark County, Washington  
By   
\_\_\_\_\_  
Eileen Quiring, Chair

APPROVE AS TO FORM ONLY:

  
\_\_\_\_\_  
William Richardson  
Deputy Prosecuting Attorney

  
\_\_\_\_\_  
Temple Lentz, District 1  
\_\_\_\_\_  
By Julie Olson, District 2  
\_\_\_\_\_  
John Blom, District 3  
\_\_\_\_\_  
Gary Medviga, District 4



Truck Type	Maximum Load (Tons)
AASHTO 1 / Type 3	25
AASHTO 2 / Type 3S2	36
AASHTO 3 / Type 3-3	40
Notional Load / NRL*	40
Single Unit 4 / SU4	27
Single Unit 5 / SU5	31
Single Unit 6 / SU6	35
Single Unit 7 / SU7	39
Emergency Vehicle / Type EV2	28
Emergency Vehicle / Type EV3	43

\* encompasses Special Hauling Vehicles (SHVs)



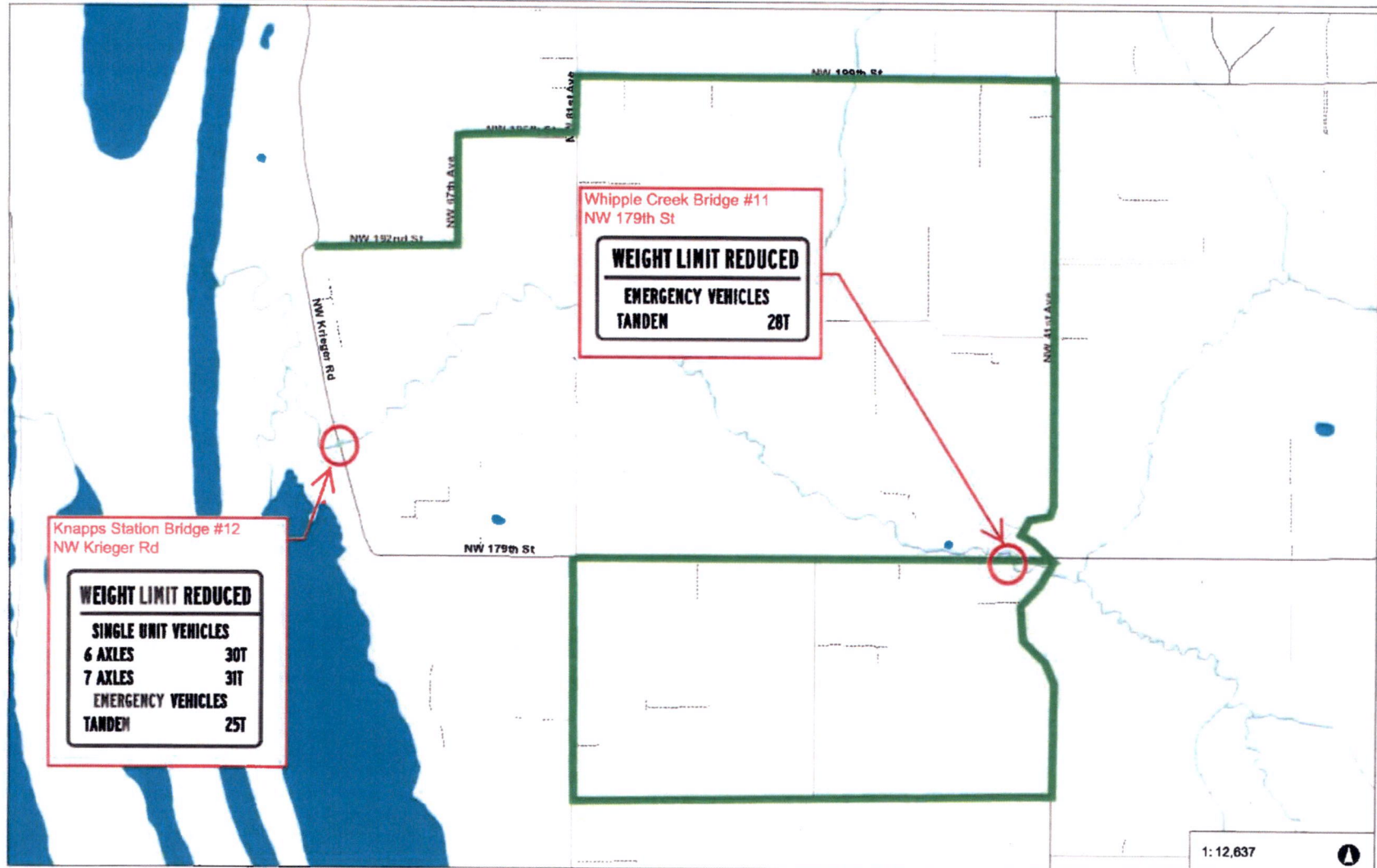


- Legend**
- Bridge
  - Cities Boundaries
  - Urban Growth Boundaries

Alternate Routes

Notes:

1:12,637

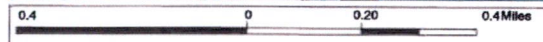


Knapps Station Bridge #12  
NW Krieger Rd

WEIGHT LIMIT REDUCED	
SINGLE UNIT VEHICLES	
6 AXLES	30T
7 AXLES	31T
EMERGENCY VEHICLES	
TANDEM	25T

Whipple Creek Bridge #11  
NW 179th St

WEIGHT LIMIT REDUCED	
EMERGENCY VEHICLES	
TANDEM	28T



WGS 1984 Web Mercator Auxiliary Sphere  
Clark County, WA, GIS - <http://gis.clark.wa.gov>

This map was generated by Clark County's "MapsOnline" website. Clark County does not warrant the accuracy, reliability or timeliness of any information on this map, and shall not be held liable for losses caused by using this information.  
**THIS MAP IS NOT TO BE USED FOR NAVIGATION**



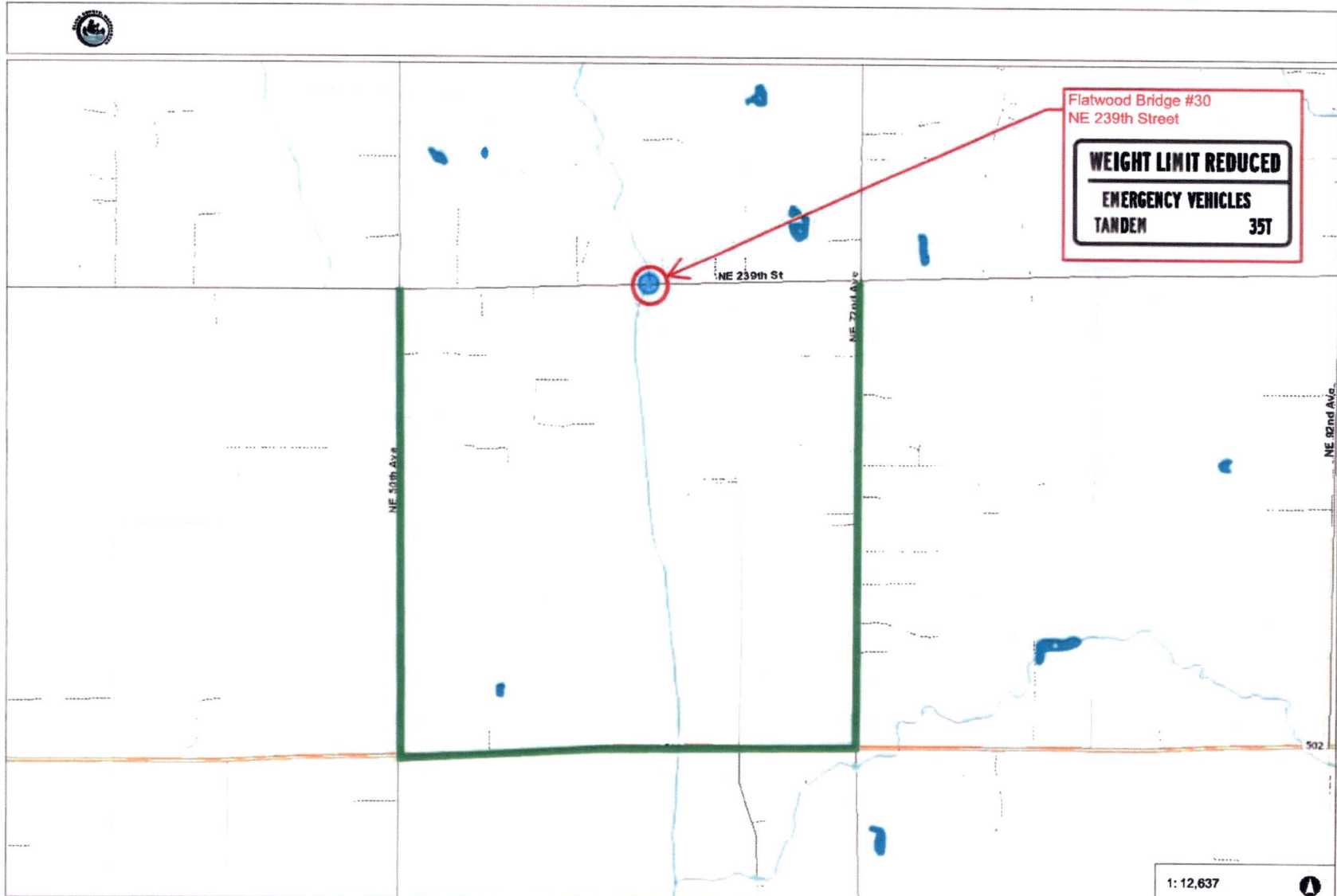
- Legend**
- Bridge
  - Cities Boundaries
  - Urban Growth Boundaries

Flatwood Bridge #30  
NE 239th Street

<b>WEIGHT LIMIT REDUCED</b>	
<b>EMERGENCY VEHICLES</b>	
<b>TANDEM</b>	<b>35T</b>

**Alternate Route**

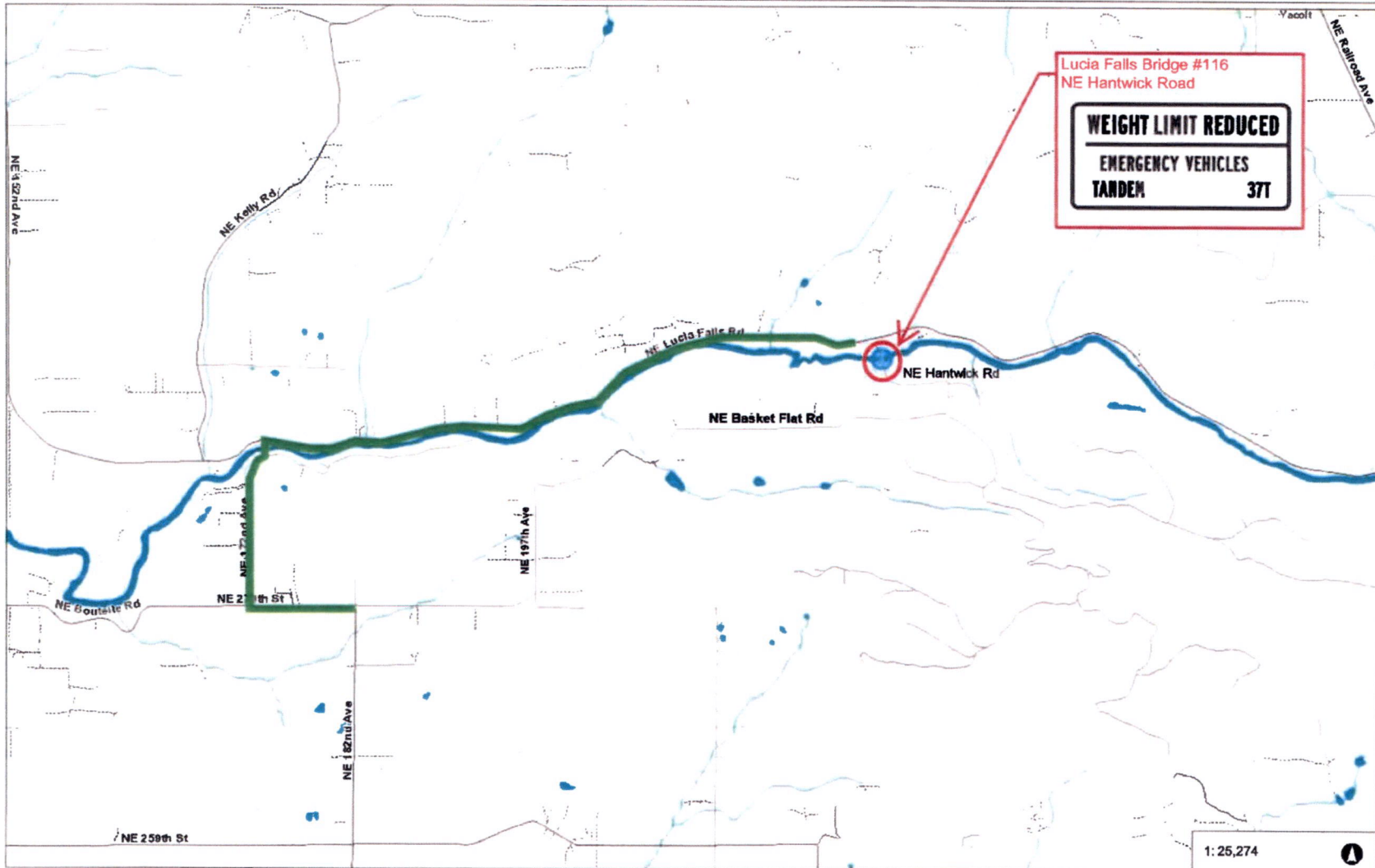
**Notes:**



0.4 0 0.20 0.4 Miles

WGS\_1984\_Web\_Mercator\_Auxiliary\_Sphere  
Clark County, WA, GIS - <http://gis.clark.wa.gov>

This map was generated by Clark County's "MapsOnline" website. Clark County does not warrant the accuracy, reliability or timeliness of any information on this map, and shall not be held liable for losses caused by using this information.  
**THIS MAP IS NOT TO BE USED FOR NAVIGATION**



Lucia Falls Bridge #116  
NE Hantwick Road

<b>WEIGHT LIMIT REDUCED</b>	
<b>EMERGENCY VEHICLES</b>	
<b>TANDEN</b>	<b>37T</b>

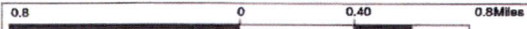


- Legend
- Bridge
  - Cities Boundaries
  - Urban Growth Boundaries

 **Alternate Route**

Notes:

1:25,274 



WGS\_1984\_Web\_Mercator\_Auxiliary\_Sphere  
Clark County, WA, GIS - <http://gis.clark.wa.gov>

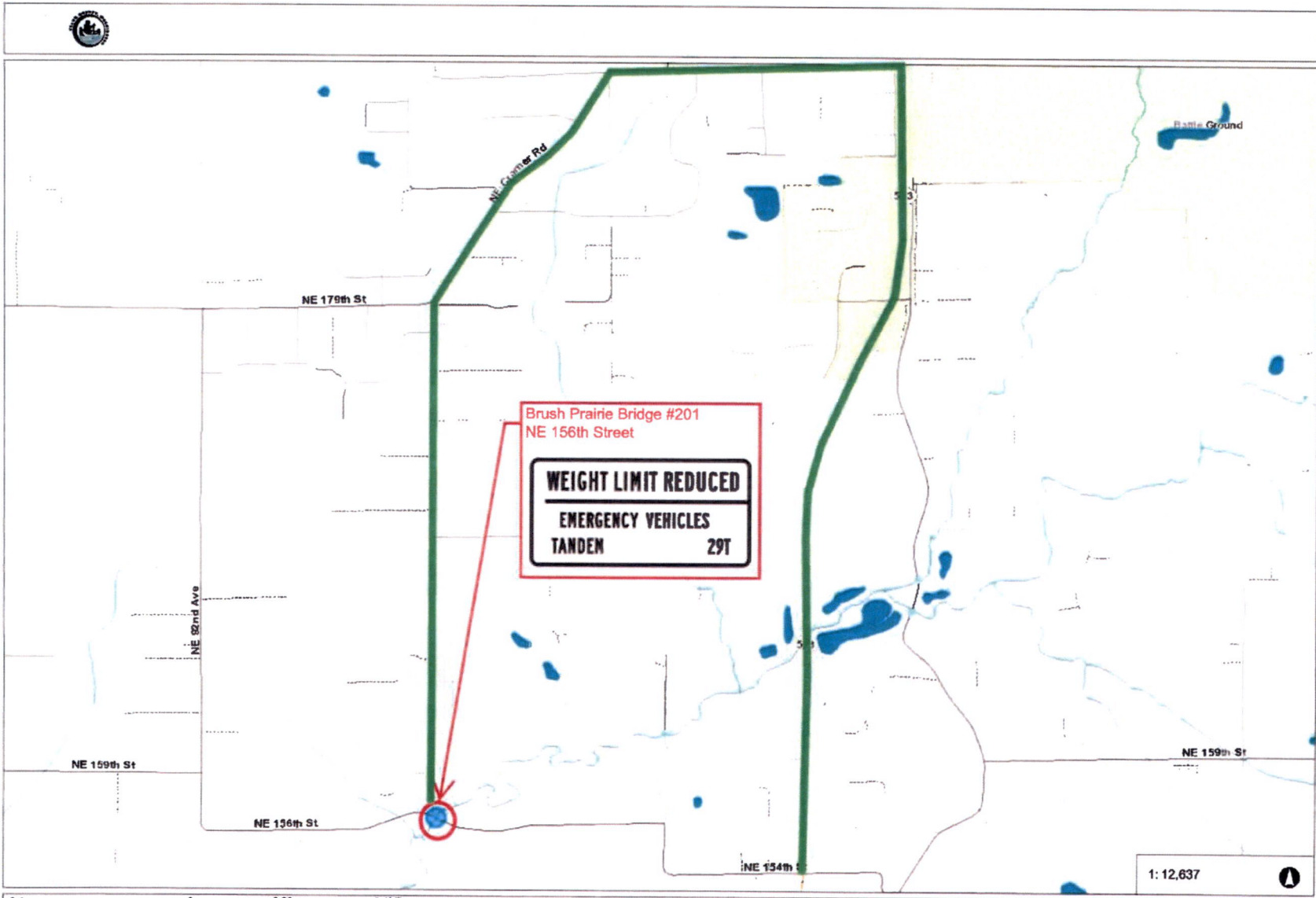
This map was generated by Clark County's "MapsOnline" website. Clark County does not warrant the accuracy, reliability or timeliness of any information on this map, and shall not be held liable for losses caused by using this information.  
**THIS MAP IS NOT TO BE USED FOR NAVIGATION**



- Legend**
- Bridge
  - Cities Boundaries
  - Urban Growth Boundaries

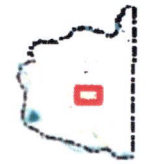
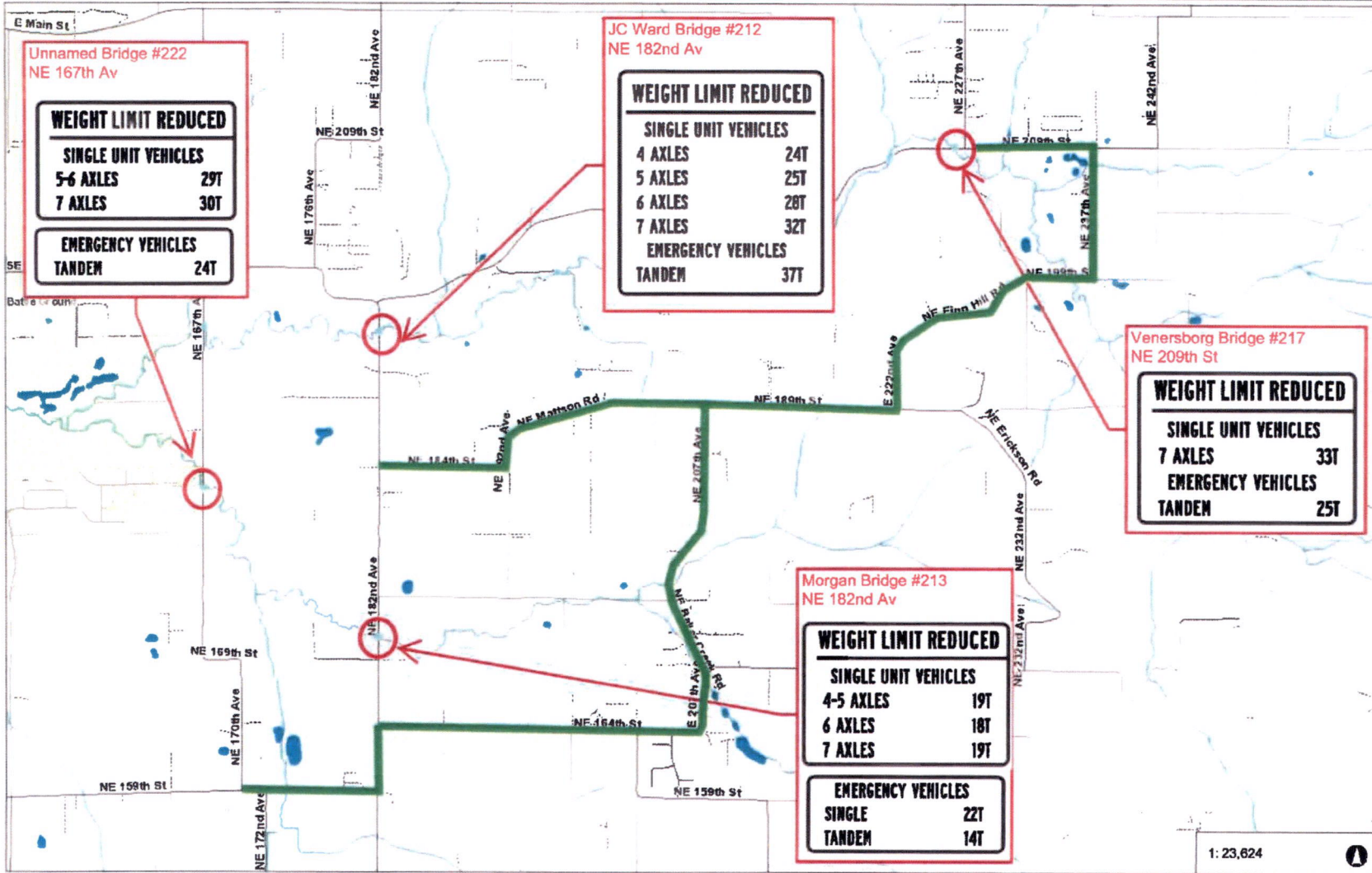
**Alternate Route**

**Notes:**



0.4 0 0.20 0.4 Miles  
 WGS\_1984\_Web\_Mercator\_Auxiliary\_Sphere  
 Clark County, WA. GIS - <http://gis.clark.wa.gov>

This map was generated by Clark County's "MapOnline" website. Clark County does not warrant the accuracy, reliability or timeliness of any information on this map, and shall not be held liable for losses caused by using this information.  
**THIS MAP IS NOT TO BE USED FOR NAVIGATION**

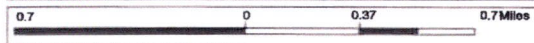


**Legend**

- Bridge
- Cities Boundaries
- Urban Growth Boundaries

**Alternate Routes**

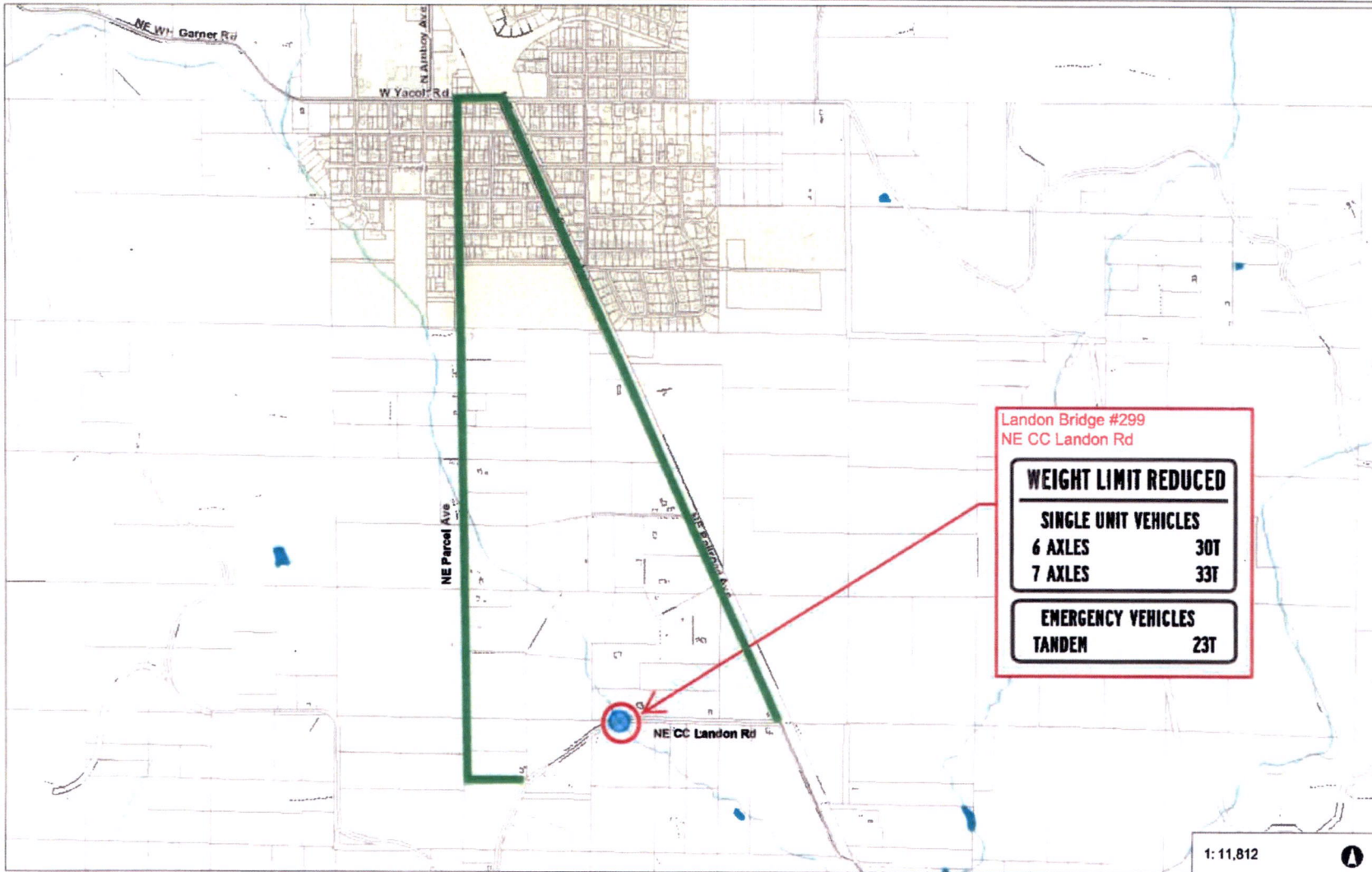
Notes:



WGS\_1984\_Web\_Mercator\_Auxiliary\_Sphere  
Clark County, WA. GIS - <http://gis.clark.wa.gov>

1: 23,624

This map was generated by Clark County's "MapOnline" website. Clark County does not warrant the accuracy, reliability or timeliness of any information on this map, and shall not be held liable for losses caused by using this information.  
**THIS MAP IS NOT TO BE USED FOR NAVIGATION**



- Legend**
- Bridge
  - Building Footprints
  - Taxlots
  - City Boundaries
  - Urban Growth Boundaries

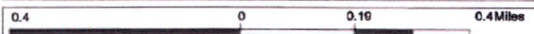
**Alternate Route**

Landon Bridge #299  
NE CC Landon Rd

<b>WEIGHT LIMIT REDUCED</b>	
<b>SINGLE UNIT VEHICLES</b>	
6 AXLES	30T
7 AXLES	33T
<b>EMERGENCY VEHICLES</b>	
TANDEN	23T

Notes:

1: 11,812



WGS\_1984\_Web\_Mercator\_Auxiliary\_Sphere  
Clark County, WA. GIS - <http://gis.clerk.wa.gov>

This map was generated by Clark County's "MapOnline" website. Clark County does not warrant the accuracy, reliability or timeliness of any information on this map, and shall not be held liable for losses caused by using this information.  
**THIS MAP IS NOT TO BE USED FOR NAVIGATION**





Pleasant Valley Bridge #33  
NE 50th Ave

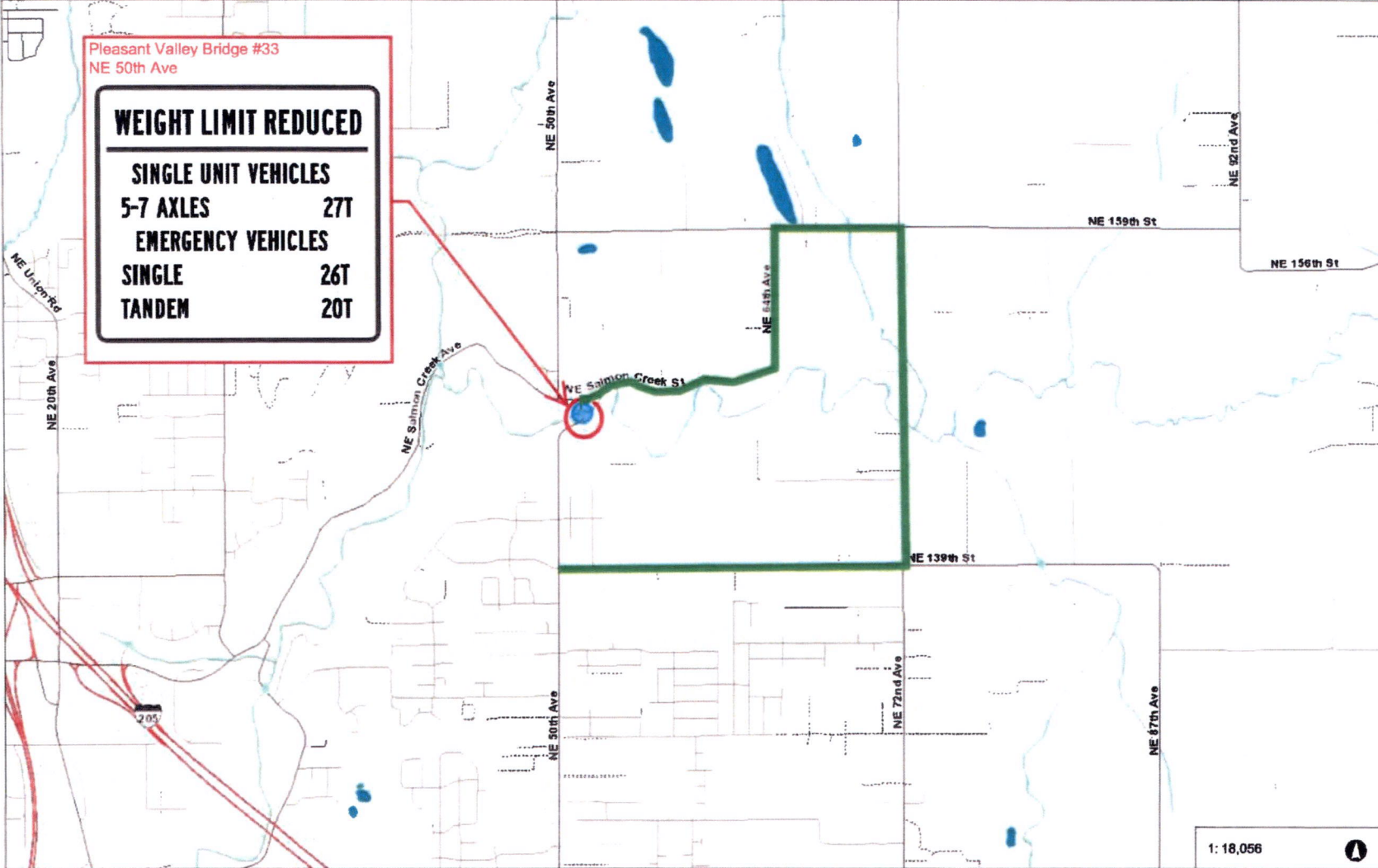
**WEIGHT LIMIT REDUCED**

<b>SINGLE UNIT VEHICLES</b>	
5-7 AXLES	27T
<b>EMERGENCY VEHICLES</b>	
SINGLE	26T
TANDEM	20T



- Legend**
- Bridge
  - City Boundaries
  - Urban Growth Boundaries

**Alternate Route**



1: 18,056



0.6 0 0.28 0.6 Miles

WGS\_1984\_Web\_Mercator\_Auxiliary\_Sphere  
Clark County, WA, GIS - <http://gis.clark.wa.gov>

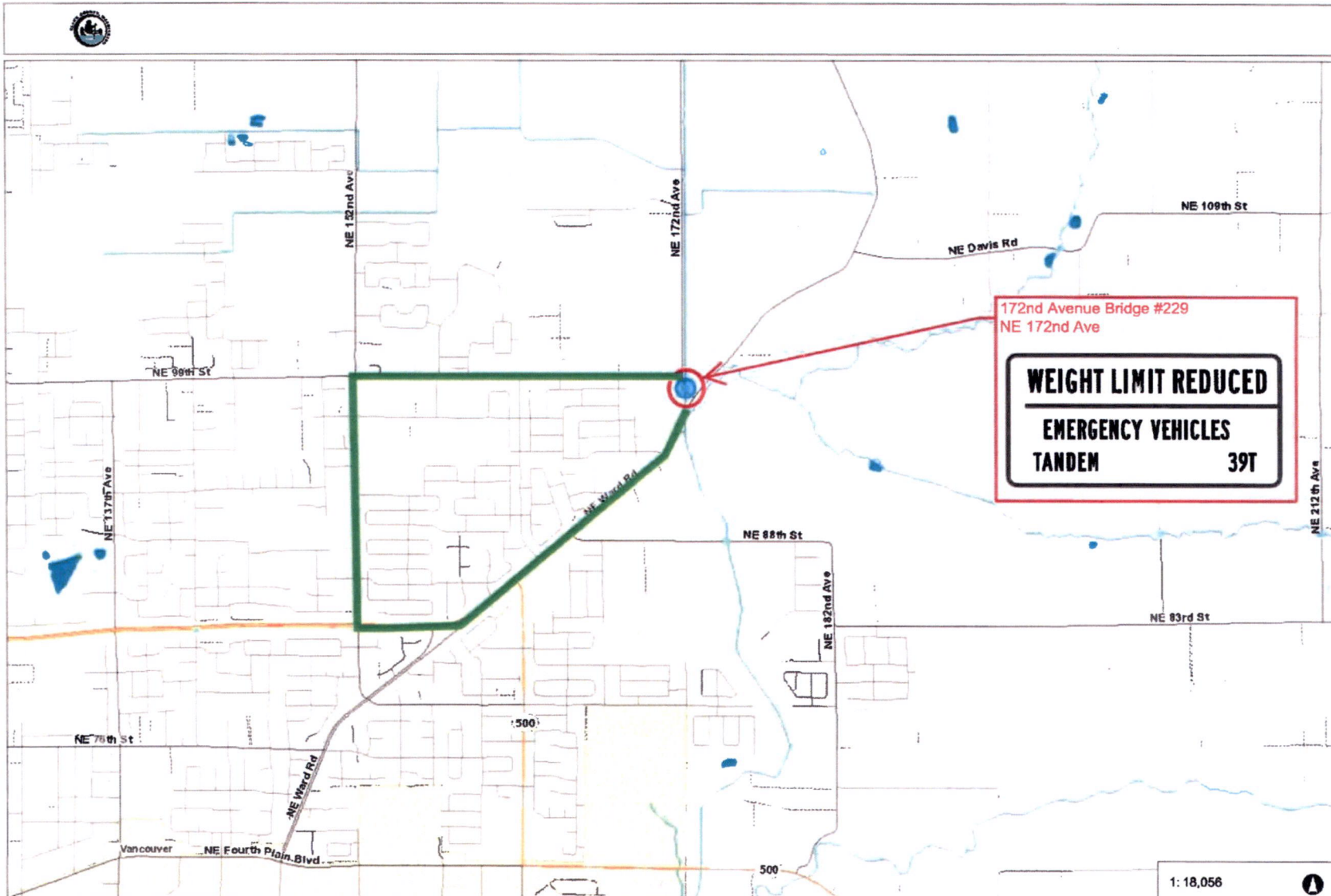
This map was generated by Clark County's "MapOnline" website. Clark County does not warrant the accuracy, reliability or timeliness of any information on this map, and shall not be held liable for losses caused by using this information.

**THIS MAP IS NOT TO BE USED FOR NAVIGATION**

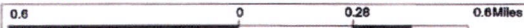
Notes:



- Legend**
- Bridge
  - Cities Boundaries
  - Urban Growth Boundaries



**Notes:**



WGS\_1984\_Web\_Mercator\_Auxiliary\_Sphere  
Clark County, WA. GIS - <http://gis.clark.wa.gov>

1: 18,056



This map was generated by Clark County's "MapsOnline" website. Clark County does not warrant the accuracy, reliability or timeliness of any information on this map, and that not be held liable for losses caused by using this information.  
**THIS MAP IS NOT TO BE USED FOR NAVIGATION**

# Load Limits on County Bridges

---

Public Works

May 5, 2020



# Background

---

- The US Department of Transportation, Federal Highway Administration sent out a directive requiring local agencies to update load rating evaluations on all National Bridge Inventory (NBI) Bridges
- The American Association of State Highway Transportation Officials (AASHTO) designated six new truck loading configurations requiring load rating evaluations:
  - Emergency Vehicles (EV2 and EV3)
  - Special Hauling Vehicles (SU4, SU5, SU6, and SU7)



# Load Limits on County Bridges

---

- To comply with the FHWA directive, Public Works hired a bridge engineer to evaluate the county's bridges and recommend load limits based on the new truck loading configurations
- Based on critical findings from the bridge engineer, legally operating SHV and EV loading configurations must be restricted on three (3) additional county bridges and updated on eight (8) previously restricted bridges



# New County Bridge Restrictions

---

## I. New County Bridge Restrictions:

1. Bridge No. 33 Pleasant Valley [NE 50th Ave. over Salmon Creek, County Atlas Pg. 27]
2. Bridge No. 229 172nd Avenue [NE 172nd Ave. over China Ditch, County Atlas Pg. 19]
3. Bridge No. 275 Van Atta [NE 112th Ave. over Salmon Creek, County Atlas Pg. 28]



## Updates to Previously Restricted County Bridges

---

1. Bridge No. 12 Knapps Station [NW Krieger Rd. over Whipple Creek, County Atlas Pg. 24]
2. Bridge No. 30 Flatwood [NE 239th St. over Mill Creek, County Atlas Pg. 36]
3. Bridge No. 116 Lucia Falls [NE Hantwick Rd. over East Fork Lewis River, County Atlas Pg. 47]
4. Bridge No. 201 Brush Prairie [NE 156th St. over Salmon Creek, County Atlas Pg. 27]



## Updates to Previously Restricted County Bridges

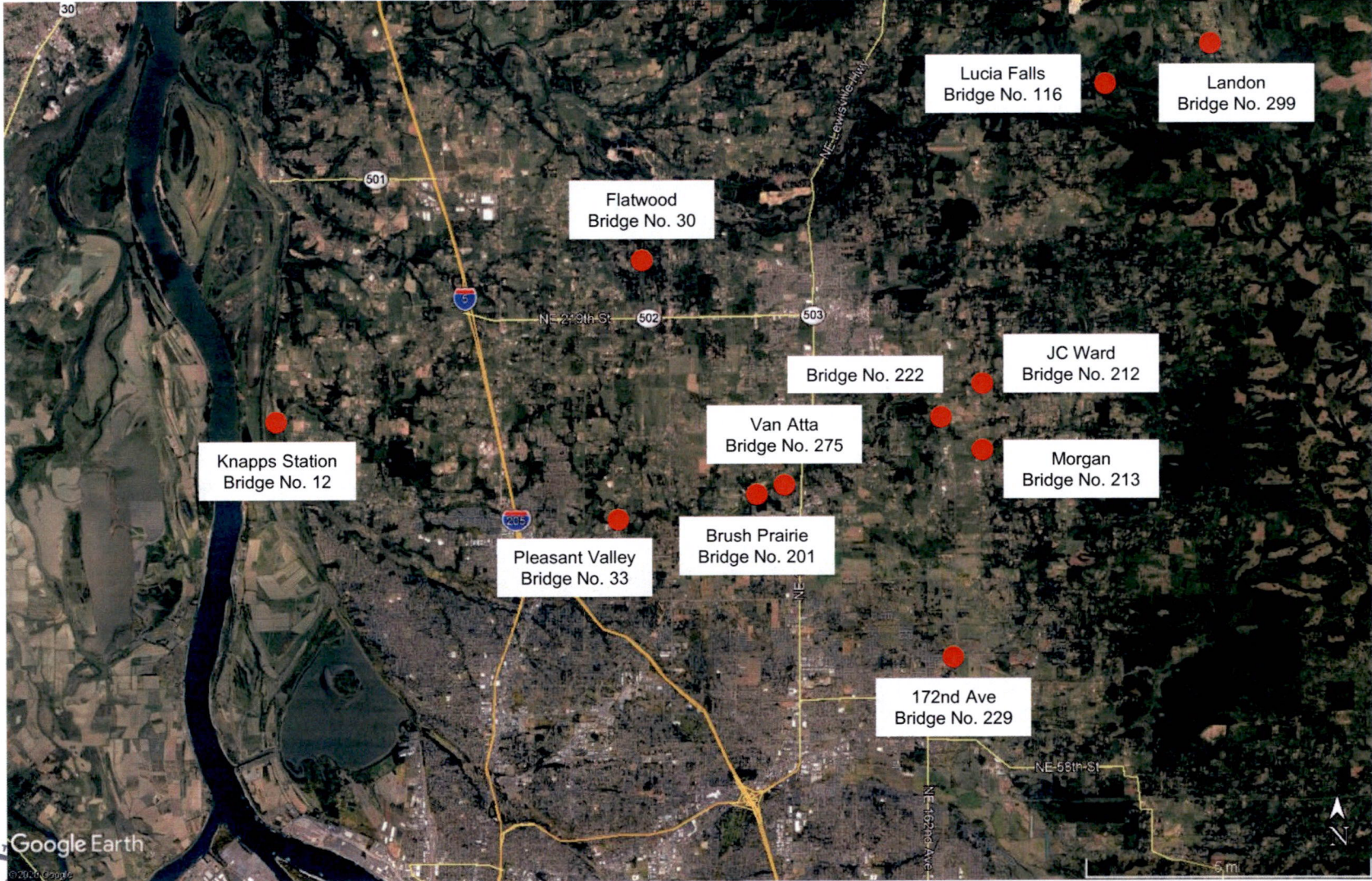
---

5. Bridge No. 212 JC Ward [NE 182nd Ave. over Salmon Creek, County Atlas Pg. 29]
6. Bridge No. 213 Morgan [NE 182nd Ave. over Morgan Creek, County Atlas Pg. 29]
7. Bridge No. 222 None [NE 167th Ave. over Morgan Creek, County Atlas Pg. 28]
8. Bridge No. 299 Landon [NE CC Landon Rd. over Yacolt Creek, County Atlas Pg. 48]

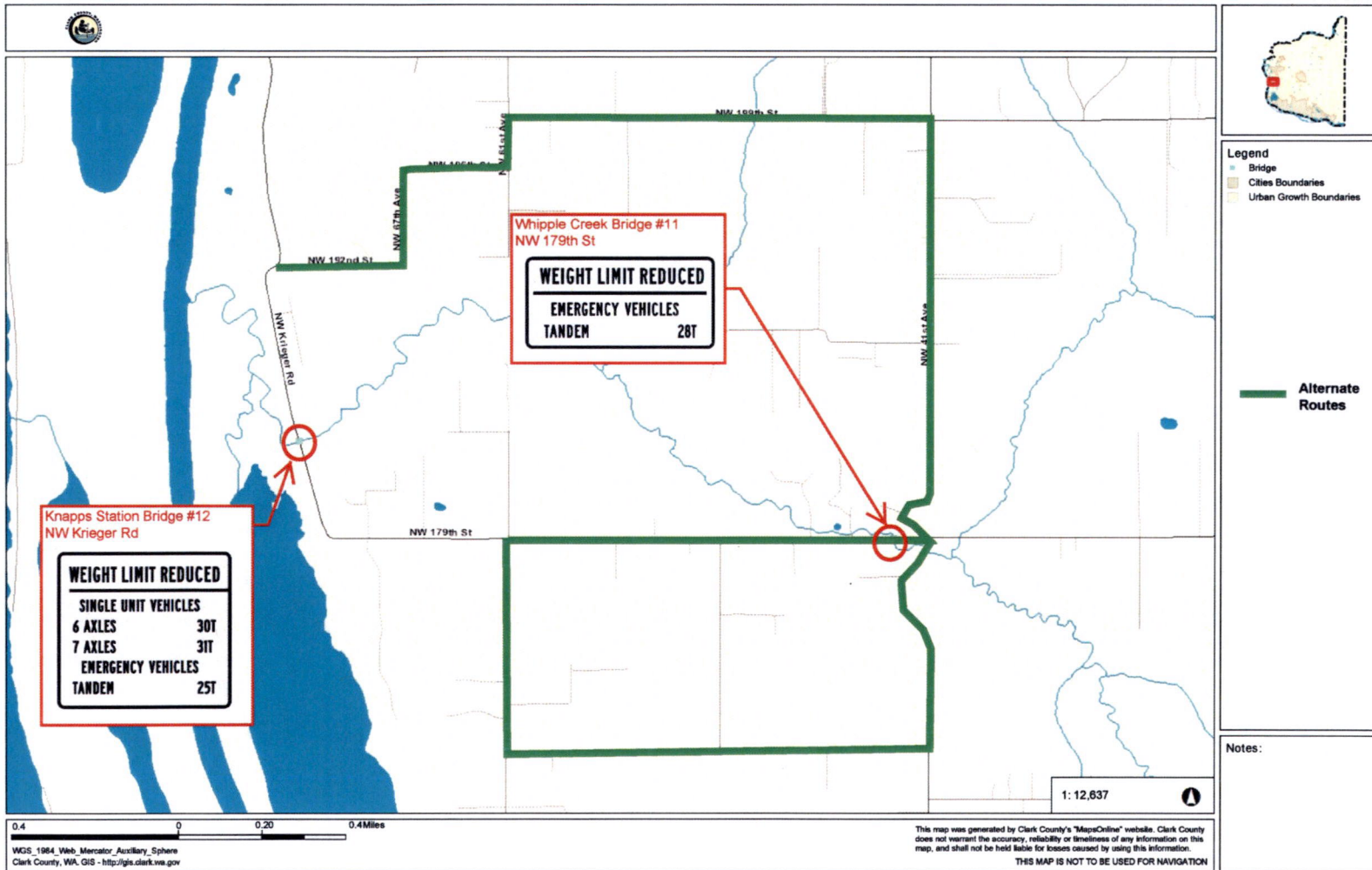




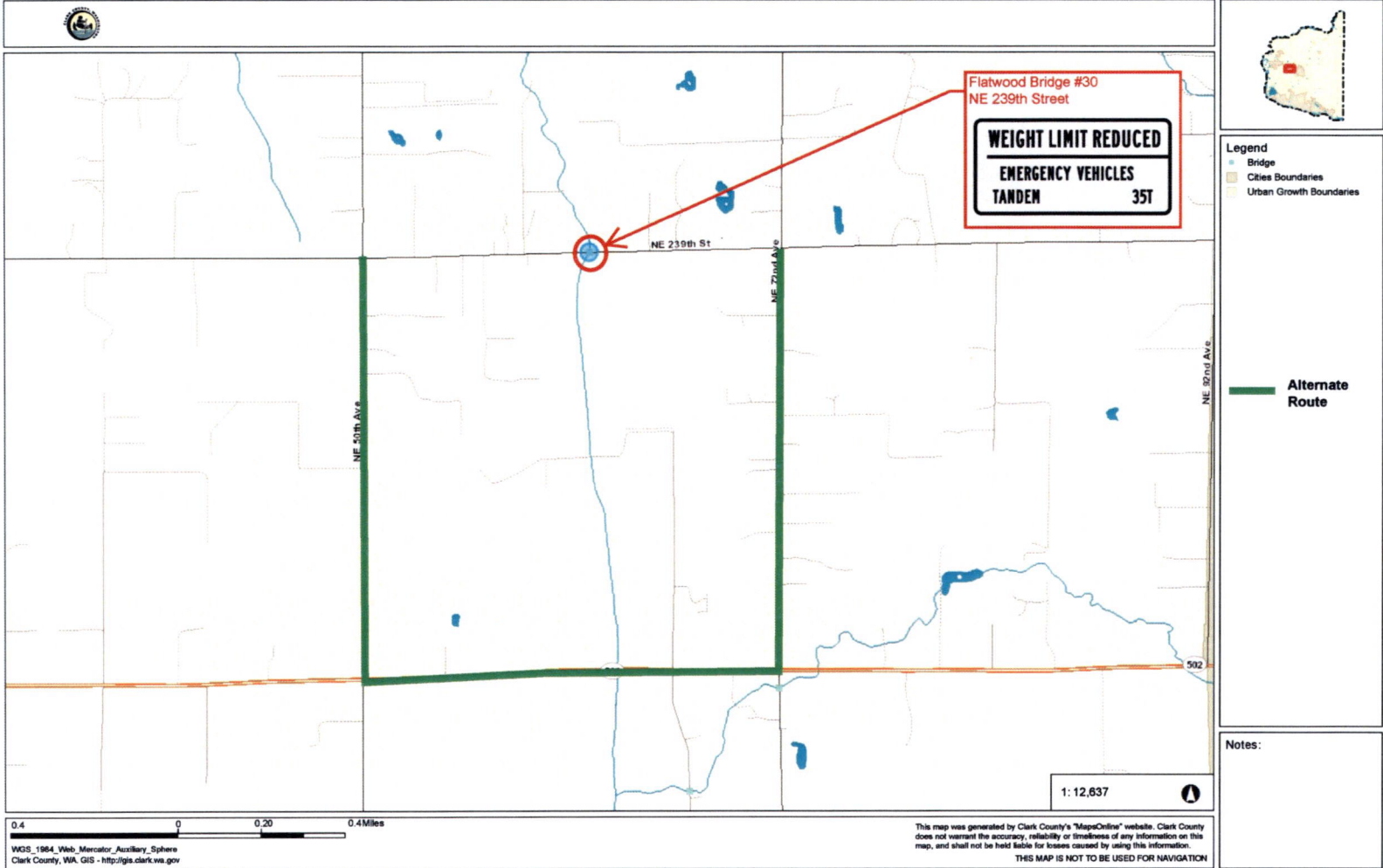
# Load Limits on County Bridges



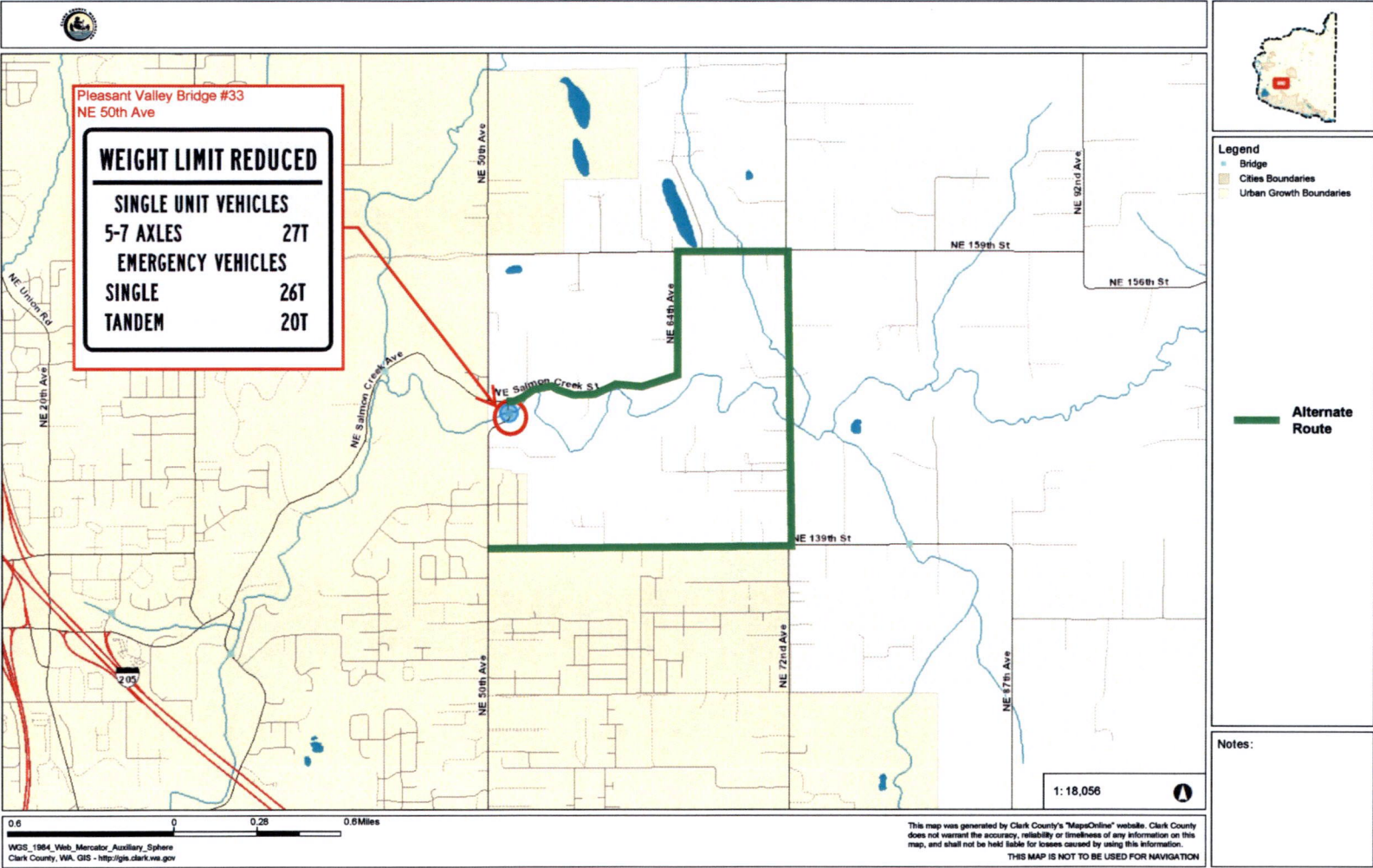
# Detour Maps



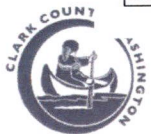
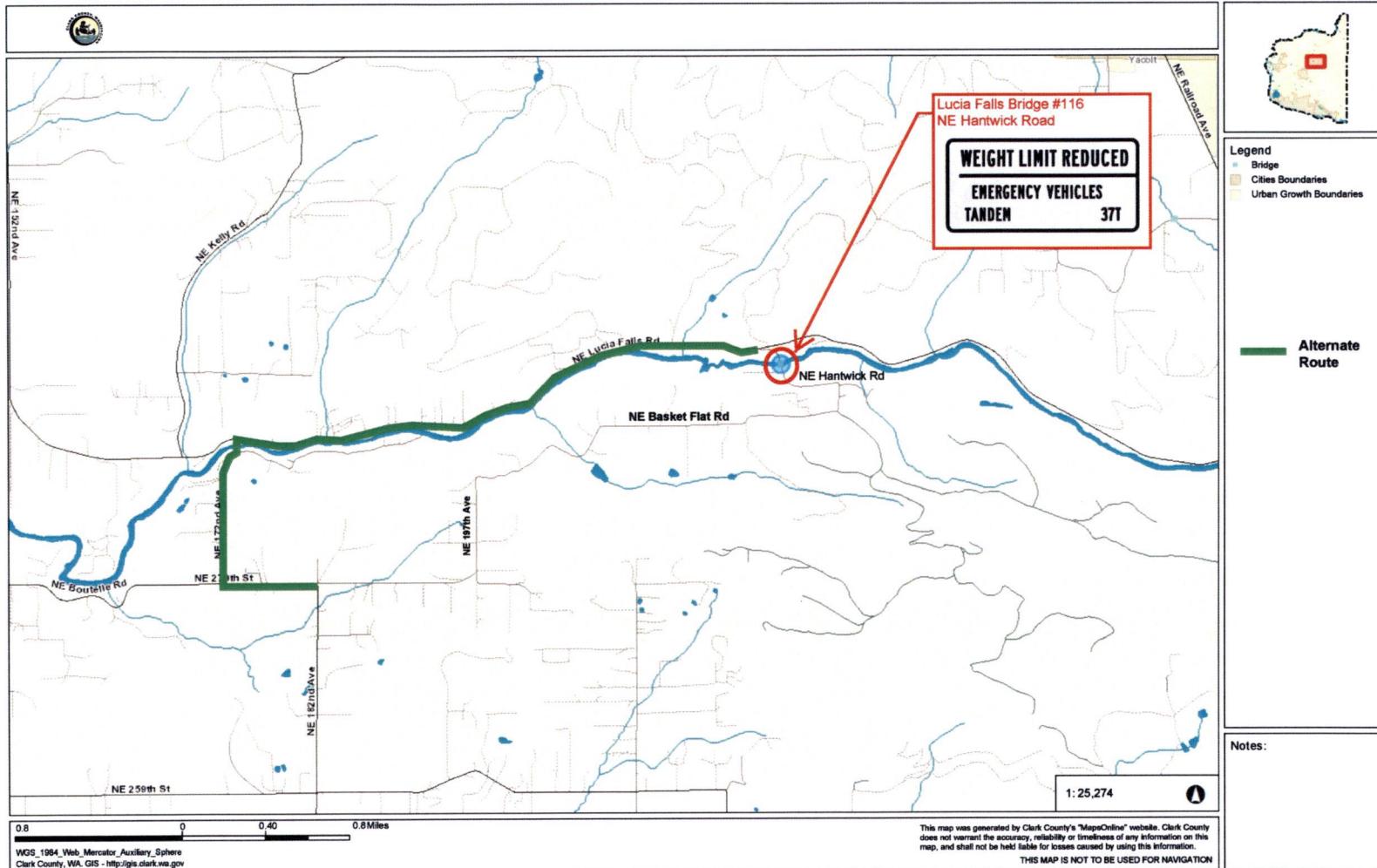
# Detour Maps



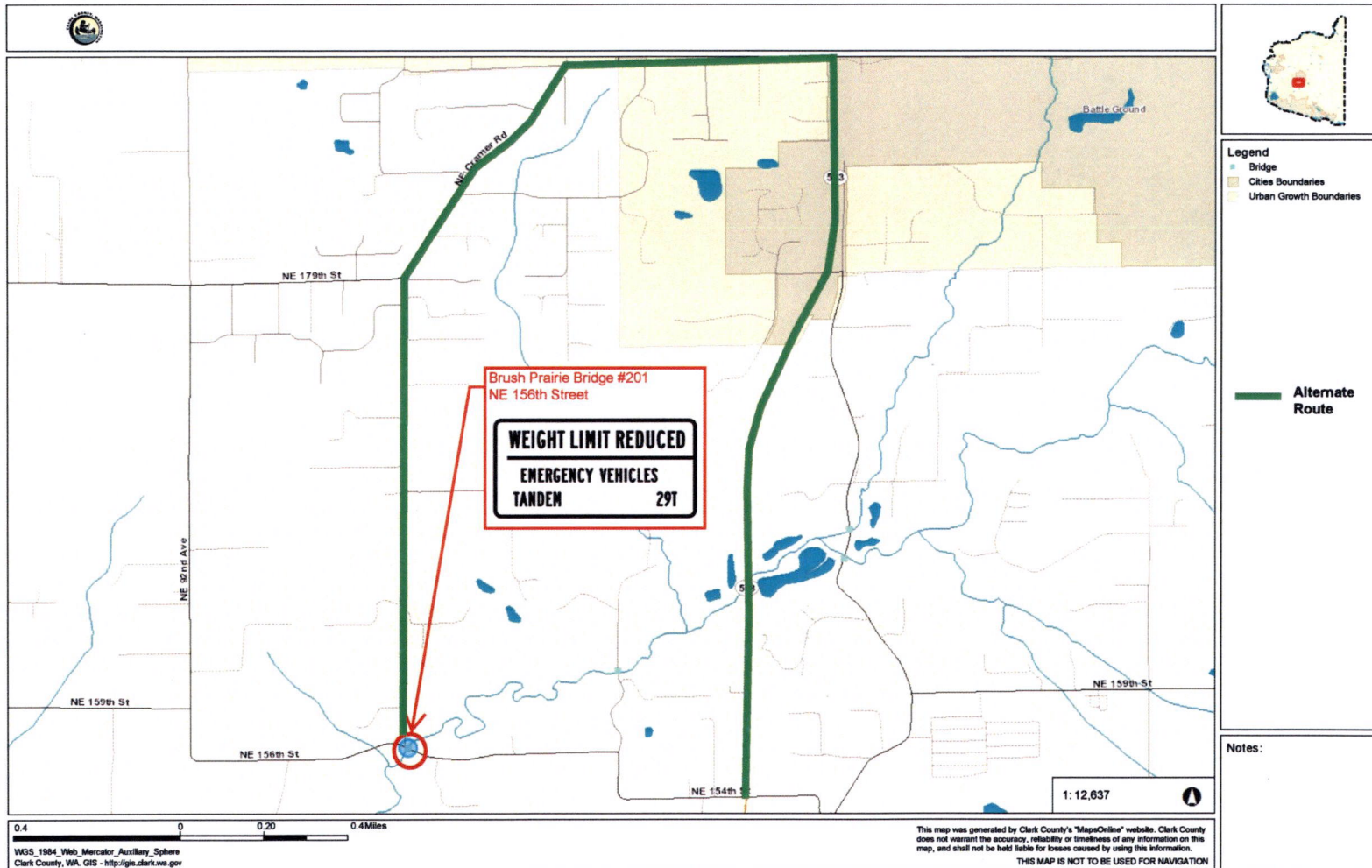
# Detour Maps



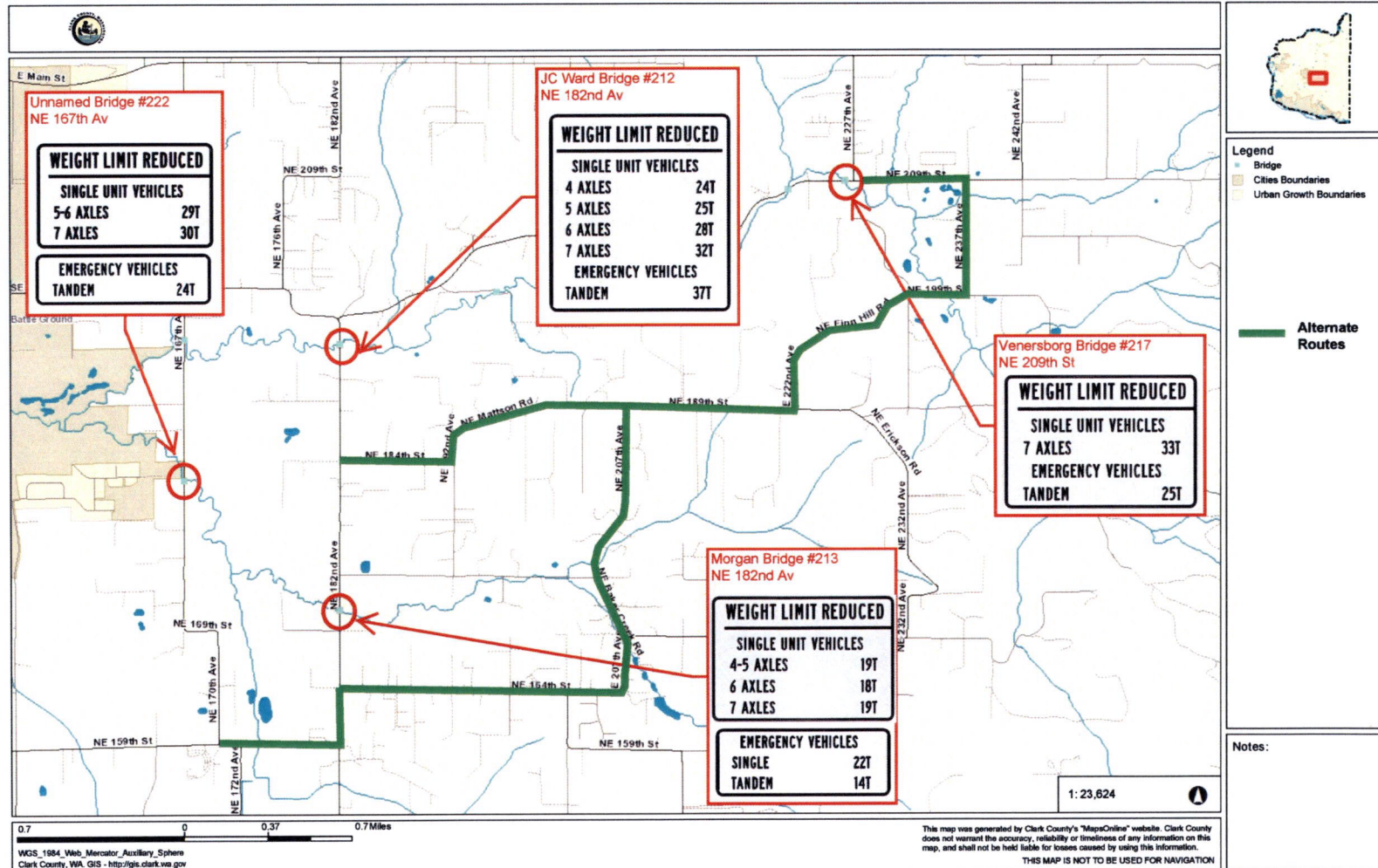
# Detour Maps



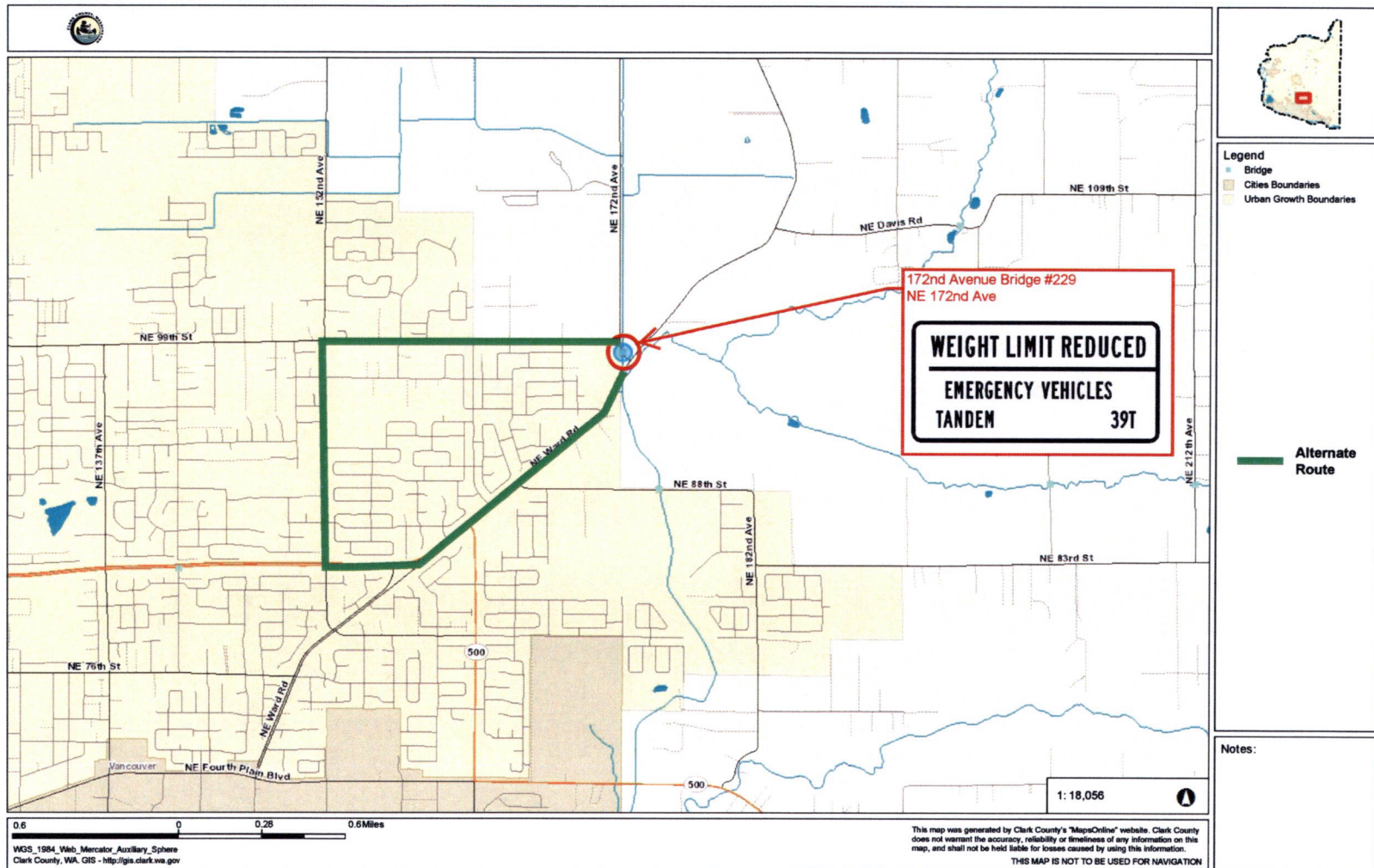
# Detour Maps



# Detour Maps



# Detour Maps





# Detour Maps

