



ADA Compliance Program

Clark County Facilities Transition Plan Youth House 1012 Esther Street Vancouver, WA

Date of Survey: March 16, 2009

Conducted by: Clark County Citizen ADA Advisory Committee

Wayne Yarnall

Bud Van Cleve (Absent)

Dave Maret

Trenton Hanson

Jesse Magana

Tim McVicker



Item # 1
 Issue: Sign Height
 Issue:
 Location: North Parking Area – Front Entrance
 Code: Code: ANSI 502.7 Identification: Where accessible parking spaces are required to be identified by signs, the signs shall include the International Symbol of Accessibility complying with Section 703.6.3.1. Signs identifying van parking spaces shall contain the designation "van accessible." Such signs shall be 60 inches (1525 mm) minimum above the floor of the parking space, measured to the bottom of the sign

Notes: Current height 41"

Item # 2
 Issue: Accessible Parking
 Issue:
 Location: Parking Lot
 Code: ANSI 502.2 Vehicle Space Size – Car parking spaces shall be 96 inches minimum in width. Van parking spaces shall be 132 inches minimum in width. Exception: Van parking spaces shall be permitted to be 96 inches minimum in width where the adjacent access aisle is 96 inches minimum in width.
 ANSI 503.3.2 Width - Access aisles serving vehicle pull-up spaces shall be 60 inches minimum in width
 ANSI 503.3 Length – Access aisles shall be 20 feet minimum in length.

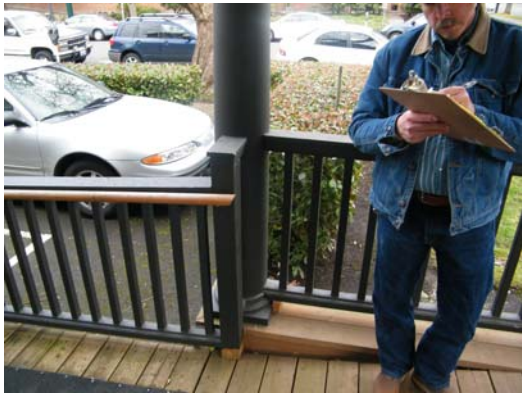
Notes: There is only one accessible parking stall – It must be van accessible.
 Current Dimensions:
 • Stall 116"
 • Access Aisle 52"



Item # 3
Issue: Directional Signs Required
Issue:
Location: Front Entrance
Code: ANSI 1110.2 - Directional Signage
Directional signage indicating the route to the nearest like accessible element shall be provided at the following locations. These directional signs shall include the International Symbol of Accessibility:
Inaccessible building entrances
Sign Sample: Signs must meet ANSI Chapter 7 Communication Elements and Features
Recommendation - Erect sign at east entrances giving directions to accessible entrance on North side of building.
Notes: Accessible elements shall be identified by the International Symbol of Accessibility and all non-accessible entrances shall have signs indicating the location of the closet accessible entrance.



Item # 4
Issue: Handrails
Issue:
Location: Main Entrance Ramp
Code: ANSI 505 Handrails
ANSI 505.1 General - Handrails required by Section 405.8 for ramps, or Section 504.6 for stairs, shall comply with Section 505.
ANSI 505.2 Location - Handrails shall be provided on both sides of stairs and ramps.
ANSI 505.4 Height – Top of gripping surfaces of handrails shall be 34 inches minimum and 38 inches maximum vertically above stair nosings, ramp surfaces and walking surfaces.
ANSI Chapter 505.10.1 Top and Bottom Extension at Ramps – Ramp handrails shall extend horizontally above the landing 12 inches minimum beyond that top and bottom of ramp runs. Extensions shall return to a wall, guard or floor or shall be continuous to the handrail of an adjacent ramp run.
Note: Guard rail height must be a minimum of 42". Current height of railing is 36"
Notes: Handrails which meet building code requirements



Item # 5
 Issue: No Accessible Restrooms
 Issue:
 Location: 1st Floor
 Code:
 Notes: Steps need to be taken to make at least one of the restrooms on the main floor as accessible as possible. It is recommended that the NW restroom – 1st floor - be designated for this purpose.

Item # 6
 Issue: Signage - Accessible Restroom
 Issue:
 Location:
 Code: ANSI 703 Signs – Please refer to ANSI standards for complete sign requirements
 ANSI – 703.3.11 Location – Where a tactile sign is provided at a door, the sign shall be alongside the door at the latch side.
 ANSI – 703.3.10 – Height Above Floor – Tactile characters shall be 48 inches minimum above the floor, measured to the baseline of the lowest tactile character and 60 inches maximum above the floor, measured to the baseline of the highest tactile character.
 Recommendations – Provided signage as required
 Notes: Provide signage if restroom meets accessibility



Item # 7
 Issue: Faucet Handles
 Issue:
 Location: Restroom
 Code: 4.19.5 Faucets.
 Faucets shall comply with 4.27.4. Lever-operated, push-type, and electronically controlled mechanisms are examples of acceptable designs. If self-closing valves are used the faucet shall remain open for at least 10 seconds.

Notes: Replace as needed



Item # 8
 Issue: Mirror Heights in Restrooms
 Issue:
 Location: 4.19.6* Mirrors. Mirrors shall be mounted with the bottom edge of the reflecting surface no higher than 40 in (1015 mm) above the finish floor
 A4.19.6 Mirrors. If mirrors are to be used by both ambulatory people and wheelchair users, then they must be at least 74 in (1880 mm) high at their topmost edge. A single full length mirror can accommodate all people, including children. Clear floor space for a forward approach 30 by 48 inches (760 mm by 1220 mm) should be provided in front of full length mirrors. Doors should not swing into this clear floor space. Mirrors provided above lavatories designed for children should be mounted with the bottom edge of the reflecting surface no higher than 34 inches (865 mm) above the finish floor or at the lowest mounting height permitted by fixtures and related elements.

Code:

Notes: The mirror in the accessible restroom exceeds height specifications – 44"



Item # 9
 Issue: Flush Handle Location
 Issue:
 Location: NW Restroom – 1st Floor
 Code: **ANSI – Flush Controls** – Hand operated flush controls shall be located on the open side of the water closet.
Recommendation – Install new holding tank on toilet with flush handle on open side of water closet.

Notes: Hand operated flush controls shall be located on the open side of the water closet.



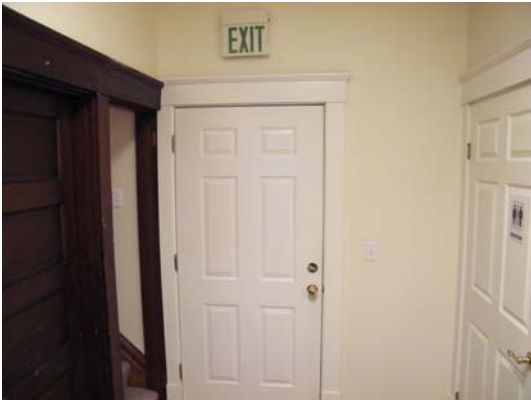
Item # 10
Issue: Toilet Paper Dispenser Installed behind Grab Bar
Issue:
Location: 1st Floor Restroom
Code: ANSI Code 604.7 Dispensers. Toilet paper dispensers shall comply with Section 309.4 and shall be 7 inches (180 mm) minimum and 9 inches (230 mm) maximum in front of the water closet measured to the centerline of the dispenser. The outlet of the dispenser shall be 15 inches (380 mm) minimum and 48 inches (1220 mm) maximum above the floor, and shall not be located behind the grab bars. Dispensers shall not be of a type that control delivery, or do not allow continuous paper flow.

Notes:



Item # 11
Issue: Door Handles/Hardware
Issue:
Location: Front and Back entrance – Restroom on 1st floor.
Code: ANSI 404.2.6 Door Hardware – Handles, pulls, latches, locks, and other operable parts on accessible doors shall have a shape that is easy to grasp with one hand and does not require tight grasping, pinching, or twisting of the wrist to operate.

Notes: Replace door knobs with lever handles





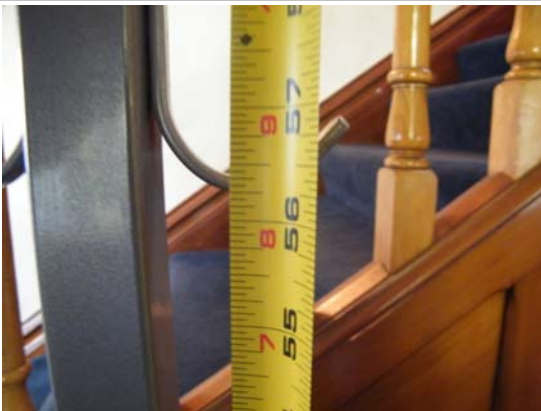
Item # 12
Issue: Faucet Handles
Issue:
Location: Kitchen
Code: 4.19.5 Faucets.
Faucets shall comply with 4.27.4. Lever-operated, push-type, and electronically controlled mechanisms are examples of acceptable designs. If self-closing valves are used the faucet shall remain open for at least 10 seconds.

Notes:



Item # 13
Issue: Access to First Aid Kit
Issue:
Location: Kitchen
Code: ANSI 308.2 Forward Reach
ANSI 308.2.1 Unobstructed - Where a forward reach is unobstructed, the high forward reach shall be 48 inches (1220 mm) maximum and the low forward reach shall be 15 inches minimum above the floor.

Notes: Current height is 52.25"



Item # 14
Issue: Access to Coat Rack
Issue:
Location: Front Hallway
Code: ANSI 308.2 Forward Reach
ANSI 308.2.1 Unobstructed - Where a forward reach is unobstructed, the high forward reach shall be 48 inches (1220 mm) maximum and the low forward reach shall be 15 inches minimum above the floor.

Notes: Current height is 56"