



FELIDA NA

Felida Neighborhood Association Newsletter – July 2019

FELIDA NA ADVOCATES FOR PUBLIC OUTDOOR RECREATION: Cougar Creek Woods & Kline-Salmon Creek Trails and Parks; Felida, Raspberry Fields; Sgt. Brad Crawford, Sorenson, and Foley Parks; Lewis & Clark Trail; and County open spaces.

FELIDA NA BOARD AND PARKS COMMITTEES INVITE YOU TO:

THE ANNUAL FELIDA NA CHILDREN'S PARADE & AFTER-PARADE COMMUNITY CELEBRATION

JULY 4, 2019 (Thursday)

10:45 am – 1:45 pm

FELIDA COMMUNITY PARK

LOCATED BETWEEN NW 122nd & NW 127th STREETS, WEST OF NW 36TH AVENUE

NO MOTORIZED VEHICLES OR SKATE BOARDS! MOTORIZED WHEELCHAIRS ARE ALLOWED.*

All bike riders MUST wear HELMETS and ride with parents/adult mentors. Be SAFE!

Decorate your bike, trike or wagon and wear red, white, and blue to celebrate July 4. Do not give out/throw candy.

Bring lunch, lawn chairs or blankets for an old fashioned picnic in the park.

Free fresh fruits and bottled water will be available.

THIS FREE EVENT IS ORGANIZED BY THE FELIDA NA BOARD AND PARKS COMMITTEE TO CELEBRATE COMMUNITY, PARTNERSHIPS, NEIGHBORS, AND KIDS WITH PARTICIPATION/SUPPORT FROM: THE VANCOUVER COMMUNITY CONCERT BAND; HAZEL DELL-SALMON CREEK BUSINESS ASSOCIATION; STANLEY, SHULL, LILLIE, HUST, EDWARDS, AND ALLEN FAMILIES; KOHL'S, CHUCK'S PRODUCE-SC, LOCAL McDONALD'S, COUNTY PW PARKS, CCSO SHERIFF'S RESERVES, SC FLYFISHERS CLUB, FELIDA NA BOARD & PARKS COMMITTEE.

PROPOSED PARADE and AFTER-PARADE CELEBRATION SCHEDULE:

- 10:45am** – National anthem, announcements and last minute announcements by the Vancouver Community Concert Band stand and picnic shelter in Felida Community Park
- 11:00am** – Move to north gate and line up behind the County Sheriff's (CCSO) lead vehicle traffic cones and barricades – local streets closed to motor vehicles along route (p. 3)
- 11:10am** – Parade commences – do not walk or ride in front of the Sheriff's vehicle and NA banner
- 11:40am** – Parade returns to Felida Community Park for refreshments, activities, and prizes:
 - *Music by the famous Vancouver Community Concert Band – listen/applaud our volunteer musicians.*
 - *Community information, park projects displays, games and activities after parade.*
 - *Kids can earn prize points by participating and learning about safety, health, environment, community, "fishing" +.*
 - *Learning points can be redeemed for school supplies, toys, books, and more in the Felida NA booth.*

If you would like to sponsor an activity, or register to set up a FREE booth, please contact: Rebecca Lillie, Vice President (503)348-5492; or Dr. Milada Allen, President at (360)573-4030 or email: timberline713@gmail.com.

For donations to Felida NA 501(c)(3) – write checks to "Felida NA", and mail to: Felida NA, c/o Milada Allen, P.O. Box 61552, Vancouver, WA 98666. To donate to the All Abilities Park Area (See p. 5)

**Felida NA is part of the Clark County Neighborhoods Program, and a 501(c)(3) independently registered with the Secretary of State (SOS) nonprofit/charitable organization division, and Internal Revenue Service (IRS). Permits for the parade are processed by the Clark County PW – Parks, CCSO and other public agencies. Note: Permits and insurance purchased by the Felida NA for this event do not allow sales ON SITE. However, you can provide information for your organization and services IF registered (free).*

Check out Felida Neighborhood Association on the Clark County website!

<https://www.clark.wa.gov/county-manager/felida>

FELIDA NA BOARD*

Executive Board Officers:

Dr. Milada Allen, President
Rebecca Lillie, Vice Pres
A.J. Sallee, Secretary
Brad Inman, Treasurer

Board Directors

Ron Edwards
Kay Hust
Gary Shull
Maxine Kelly
Helen Koeppen
*Vacant position***

PARKS COMMITTEES *

Cougar Creek Woods

Community Park and Trails:

Terry Allen, co-chair
Gary Shull, co-chair

Dr. Milada Allen & board

Felida Park -- Phase III:

Jamie Allen, co-chair
Dr. Milada Allen, co-chair

Foley Neighborhood Park:

Rebecca Lillie, co-chair
Terry Allen, co-chair
Brad Inman

Sgt. Crawford Park – Phase II:

Jamie Allen, co-chair
Helen Koeppen, co-chair
Dr. Milada Allen

Sorenson Neighborhood Park:

A.J. & Jerry Sallee
Dr. Milada Allen

Felida NA Ex-Officio President & Parks Committee Chair

Jamie Allen (Volunteer)

*All Board members & Committee Chairs are elected volunteers. Felida NA has no paid staff or contractors.

**Must be 18 or older and reside within Felida NA boundary. Final candidate must agree to a background check prior to appointment for the remainder of the term. For information contact: Dr. Milada Allen, P.O. Box 61552, Vancouver, WA 98666 timberline713@gmail.com.

*Neighborhood Association newsletters are copied free of charge by the Clark County Neighborhood Outreach Office. The information and views expressed are solely those of the Felida Neighborhood Association and not Clark County Government or their employees.

JULY 4, 2019 FELIDA NA CHILDREN'S PARADE AND CELEBRATION IN FELIDA PARK

The Felida NA Board is organizing its #16th annual Felida NA July 4 Children's Parade and Community Celebration. Participants are encouraged to decorate their bikes, wagons, baby carriages, and wheelchairs; wear red/white/blue to celebrate national history, traditions, and community.

After the national anthem by the band, the parade line will move up to the north park gate. The band will continue playing for "friends" of the band, Felida NA parade/event participants, and fans who remain in the park and listen to music. Applaud, dance, and thank the all-volunteer, popular concert band for participating again this year. If you want to know more about the band or join it, see page 4.

As in the past, the Sheriff's Reserve vehicle (CCSO volunteers) will be guiding the parade -- after the barricades are set up. The grand-marshal's (young child) vehicle will be behind the CCSO vehicle, but at the head of the parade followed by the Felida NA banner that is traditionally carried by a local Boy Scout Troop. DO NOT race to get ahead of vehicles, banner, Boy Scouts, and those in front of you. (See Page 3 for area map, parade route directions, and road closures information.)

OTHER PARADE/EVENT-RELATED QUESTIONS AND ANSWERS

Questions: Many Felida NA residents continue to ask about history of the July 4 Felida NA event. Some ask: if the Fire District 6 no longer organizes/coordinates/pays for parade permits, who does?

Answers: The majority of questions are addressed as follows:

The July 4 Kids Parade was started by the Family of Christ Lutheran Church in Felida with about 50 participants as part of the "Healthy Communities" project/outreach. The parade started/returned to the church parking lot for a potluck. In 2003, Felida Community Park was built and the July 4 parade/potluck were moved to the new Park.¹

In Spring 2004, Felida NA Board was approached by church organizers with a request to take over the July 4 Kids' Parade and family potluck. The new Felida NA Board voted to honor the request to continue the tradition of the Kid's parade in Felida as it was compatible with NA Board goals and bylaws. It also voted to: organize, advertise, acquire/pay for permits and event costs. However, the Board, with input from the County Health Department, voted to stop family potluck, but replaced it with a free BBQ/lunch in compliance with County permits and food safety inspector's requirements for a public event in the Park. The Felida NA Board, SC Lions, and partners paid for food and event permits.²

CTRAN immediately contacted the Felida NA Board and complained about prior parade road closures on NW 36th Avenue, interruptions in bus schedules, and lack of coordination. Felida NA Board began to work with CTRAN regarding bus scheduling and adjusting parade time to accommodate bus schedules. As the parade participation increased from 500 – 3,000, the road was blocked increasingly longer with each parade. When it reached 5,000, the Felida Board changed the route with public input.

In 2005, Jamie Allen, as the Felida Parks Committee Chair, proposed to add activities and provide educational opportunities and information designed to engage, empower, and encourage partners and community members to actively participate in protecting and improving quality of life in the community.

In 2007, Jamie, as elected president, proposed and introduced "learning points," for kids only, to participate in learning activities. These points are redeemed for books, toys, pencils, sports balls, shells, rocks, stuffed animals, and other items in the Felida NA prize booth. The majority of "prizes" are donated by partners, Board and Committee volunteers; and purchased with a small grant.

After the Sgt. Brad Crawford Park was built, hundreds of neighbors requested to include it in the parade route. This also honored many requests to increase the length of the parade route to encourage walking and community cohesiveness. The Board voted to adopt the new parade route. (See p. 3).

FYI: Prior to 2004, to our knowledge, the Fire District 6 did not organize or pay for the Church's event permits or insurance. After 2004, for over a decade, the Fire District 6 did not organize or pay for the Felida NA Board's parade and celebration. However, it did participate, until about three years ago, as a community partner, lead the parade with an antique fire truck (volunteer driver), and set up CERT and District 6 information booths at the Felida NA Board's event. Off-duty members of several fire districts continue to bring their families, children, and friends to the Felida NA Board's July 4 parade/celebration.

¹ Also see other Felida NA newsletters.

² The Board voted to eliminate free public BBQ as hamburgers, hotdogs, and other items associated with the BBQ reached \$5,000 – reflecting increased consumer prices and participation. Currently, only fresh fruit and bottled water are available at the event with some help from our partners.

JULY 4, 2019 FELIDA CHILDREN'S PARADE PROPOSED ROUTE

Line up in the Felida Park by the picnic shelter & band stand.

PROPOSED parade route:*

Begin at the north Park gate: ↑

S - North on NW 39th Ave.

L - West on NW 131st Street

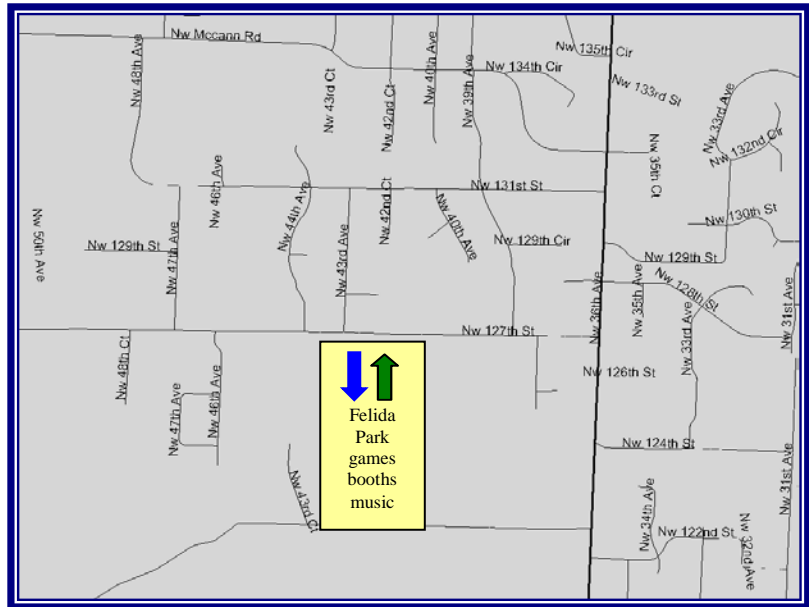
L - South on NW 47th Avenue

L - East on NW 127th Street

R - into the Park ↓

*Parade route and starting time may be adjusted due to: weather, permit, road conditions; and/or 911 emergencies.

L = left S=straight R = right



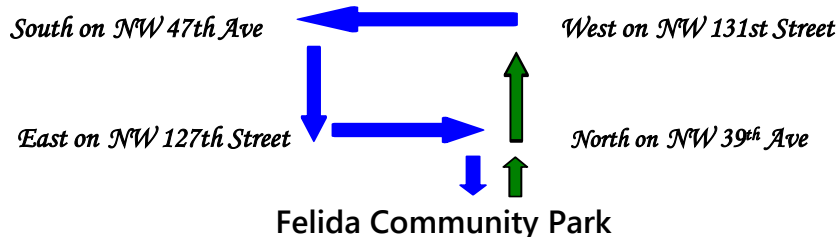
IMPORTANT NOTICE TO ALL DRIVERS:

ROADS CLOSED FROM 10:50AM to about 11:50AM ALONG THE PARADE ROUTE

THERE WILL BE **NO MOTORIZED VEHICLE ACCESS** TO/FROM THE PARADE ROUTE WITHIN POLYGON AND WEST OF THE NW 47TH AVENUE – BETWEEN NW 131ST AND NW 127TH STREETS

DO NOT MOVE OR REMOVE Clark County Public Works barricades.

PARADE ROUTE POLYGON:



Photos by Sean Allen

JOIN US IN THE PARK FOR AFTER-PARADE ACTIVITIES AND COMMUNITY CELEBRATION: MUSIC, FLY FISHING DEMONSTRATIONS, PRIZES, SAFETY, HEALTH, PARKS, + FRESH FRUIT AND BOTTLED WATER WILL BE AVAILABLE ON-SITE. BRING FAMILY PICNIC LUNCHES AND BLANKETS. CHECK OUT NEW PARKS AND TRAILS PROJECTS.

VANCOUVER COMMUNITY CONCERT BAND

Many of you had questions about the Vancouver Community Concert Band (VCCB) that performs at the Felida NA Children's Parade and Community Celebration on July 4. This was a question posed at many events. Here is some information in their own words:

The VCCB began in 2005 as a "Beginning Band" class at Clark College. We perform at community events including National Park Service functions, Memorial Day, July 4 Children's Parade and Community Celebration, just to mention a few of about 15 events per calendar year. Our repertoire includes patriotic pieces, popular songs, Broadway medleys, seasonal music, marches, and ballads. We have about 45 active members and our Music Director, Erin Hanson.

We welcome all musicians to join us. There are no auditions. We have fun playing together and rehearse every Tuesday night from 7:00 to 8:30pm in the gymnasium behind St. John Lutheran Church, 11005 NE Hwy 99, Hazel Dell. Bring your music stand. The VCCB has several smaller ensembles:

Woodwinds Anonymous, a woodwinds chamber group that meets every Thursday night (currently 1 or 2 flutes, 3 clarinets, bassoon, bari sax, bass clarinet, F horn). We play at Fort Vancouver Regional Library once a month, and elsewhere - Baroque, classical, barbershop, pop: mostly our own arrangements.

Same Old Schmidt German Band – polkas and waltzes once a month with occasional public gigs.

Volcanic Dixie Band – traditional Dixieland music once a month.

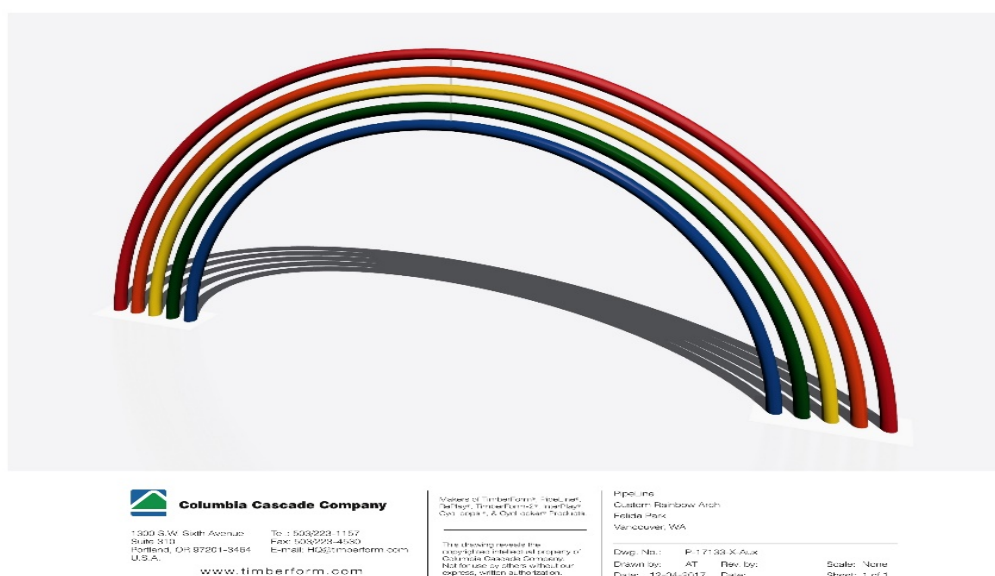
For more information and updates contact :

Erin Hanson (Music Director and bassoon) vancband@gmail.com

Matt Oftedahl (current Band Board President and tuba) vancband@gmail.com

Dorothy and John Parkin (Clarinet, Flute – Woodwinds Anon.) 360 693-1167 or 360 608 6995 john@johnwparkin.com

ANSWERS TO MAJOR QUESTIONS ABOUT RAINBOW ARCHES AND PLAY AREA SITE PLAN



Qs: After an article was published in the Columbian newspaper about the All Abilities Play Area in Felida Park, questions were asked, such as: who designed plans and/or rainbow arch? (Also see pages 5-6.)

As: The rainbow in the park was requested and drawn by thousands of kids attending Felida NA's July 4 parade/celebration, Kline Kids Fish (2-day event), and other large events over several years. Over 10,000 kids (2-92) were excited about having a rainbow in the Felida Park. This was a long-term Felida NA Board project that survived numerous revisions, delays, approvals, and changes. Elected officials, public agency leadership/administration; organizational restructuring; and key staff changes in the City of Vancouver/Clark Parks, Clark County Parks, County Board of Commissioners; City and County Parks Advisory boards and commissions; and other review/approval agencies. There were many other challenges for Felida NA Board volunteers.

Only a few rainbows met County standards and site-specific needs/restrictions. None were available at a reasonable cost. Felida NA Board contacted the Columbia Cascade Company, 1300 SW 6th Avenue, Suite 310, Portland to design and provide an estimate for manufacturing, delivering locally in compliance with Clark County & PW – Parks code, standards, requirements, and site compatibility. Also see article on this project (page 5-6); and original, approved, Alternative 2 site plan (page 7). This site plan was prepared for the Felida NA Board by Standridge Design Planning and Engineering, 113 W 7th, Suite 200, Vancouver.

ALL ABILITIES CHILDREN'S GARDEN/PLAY AREA IN THE FELIDA COMMUNITY PARK

In 2004, Jamie Allen & Milada Allen team³ was approached by many parents, children, and adults with special needs. All had hopes and wishes that public parks would finally include play equipment that would be more user-friendly, accessible, fun and "kind" to their needs and abilities. They were disappointed with the lack of inclusive, all-age-and-abilities play equipment in public parks. Some mentioned: rocking boats, locomotives, sheriff's cars, and airplanes that they could "board and ride" using their wheelchairs. Some mentioned merry-go-rounds that they could sit in and feel safe despite physical restrictions or lack of strength. Others were excited about playing and hearing drums to feel vibrations (by hearing-impaired) and hearing noises (by sight-impaired).

After many on-site visits, observations, and research, the Allen Team⁴ realized that public parks usually comply with the minimum ADA requirements. However, parks are not required to and do not include wheelchair-accessible, sight/hearing-impaired play equipment, or "interpretive" plaques (e.g., Braille). The Team observed that kids in wheelchairs; using a walker; and other assistance devices looked sad and discouraged as they approached the edge of the concrete or longingly looked at other kids having fun in a distance -- they knew from experience what would happen if they left the concrete ledge and tried to navigate wheelchairs or walkers in the mulch and chips piled high around play structures, swings, and ramps. One mom was struggling to carry her "big boy" to the colorful play structure "island" gleaming in the sun, and beckoning from "oceans of mulch."

In 2006, after hearing many stories about wonderful all abilities playgrounds nation-wide, the Allen Team and Felida NA Board proposed a first inclusive ***All Abilities Children's Play/Garden Area*** in the County. They chose Felida Community Park, a public park built in partnership with the Felida NA Board, Vancouver/Clark Parks and Recreation, community donors and volunteers; and it has on-site restrooms and handicap parking adjacent to the area. ((The current value-added from the community is approaching two million (\$2,000,000)).

From 2005 to 2015,⁵ the AllenTeam made proposals to changing leadership new parks directors, city/county and state policy- and decision-makers, and advisors. They included five parks directors in the City of Vancouver/Clark Parks and Recreation and Clark County Parks; eight County Board of Commissioners now Councilors; and City of Vancouver Parks & Rec Advisory Commission and Clark County - Parks Advisory Board.

The Allen Team approached Felida NA Board to support a common goal for the safety, physical/mental health, well-being, and healthy opportunities to improve the quality of life for all members of the community. After the Board voted to adopt the project, over 11,000 residents and parks users provided input at several large Felida NA events (3,000 - 6,000 people/event) for eleven years. These proposals, contingencies, and negotiations changed with new leadership/management, parks directors, and policy-/decision-makers.

The Felida NA Board President shepherded this important project through the public process reviews, and approvals from the Clark County Board Commissioners and Councilors; Vancouver/Clark Parks Advisory Commission and Clark County Parks Advisory Board; and Clark County Public Works. Along the way, concerns were raised about increased costs for special needs play in public parks and "new and improved soft landing" zones, technology, and products to replace mulch. Cost estimates skyrocketed and Felida NA Board needs help to fundraise for construction of this area. (See p. 6)

The Felida NA Board volunteers paid for the extensive community outreach, provided thousands of volunteer hours, prepared four alternatives, in addition to the "Do Nothing" alternative. After years of input and reviews, Alternative 4 became the preferred alternative. The All Abilities Children's Garden – Felida Community Park project was included in the draft Clark County Parks, Recreation & Open Space Plan (adopted through an emergency Board of Clark County Commissioners'/Councilors' resolution in late 2015 to qualify for bi-annual RCO parks grants). It was added to the final, adopted Clark County General Plan as Felida Community Park – Children's' Garden project with a \$10,300 funding allocation from the County Parks Budget. The preferred Alternative 4, Conceptual park area/site design 2, was approved by the Clark County Parks Advisory Board (PAB) and the Clark County Public Works - Parks Department in 2016/2017.

In 2018, the Felida NA Board partnered with the Standridge Planning and Engineering to prepare a formal engineering site-plan 1-A; and prepared a "Top Ten List" for special needs play equipment and features based on input/votes from/by the community. (Note: Due to on site-specific limitations and underground infrastructure/equipment, the rainbow arch was moved to the front of the area by the County contractor.)

³ The Allen Family Team (Jamie, Terry, and Milada) volunteers/advocates for programs helping kids, veterans, seniors, common community goals.

⁴ The Allen team, long-term volunteers, serve on several community boards to collaborate, communicate, cooperate, coordinate and partner with public, private and nonprofit organizations. They connect communities, neighbors, and volunteers county-wide. This team has many years of training and experience with public parks and open spaces including: advocating for acquisition/preservation of open spaces; saving land acquired for parks, trails, and land trusts from "surplusage;" connecting and encouraging community volunteerism and public input to provide equal/fair access to outdoor recreation to improve health.

⁵ The Harper all-abilities playground was built in 2009 by the Portland Parks and community partners in an existing park in north Portland. The Allen team met many Clark County residents at the Harper playground (many came from Vancouver and Ridgefield).

To date: Felida NA Board's payments for costs/services and value of thousands of volunteer hours are estimated to be \$190,000 (this estimate varies with the IRS allowance for general volunteer hours and professional expertise rates/hour.) In 2018, the County budget allocation was increased to about \$80,000 for engineering, agency review, and permitting costs for this project. The final total projected cost estimate for the **All Abilities Play/Garden Area** and overflow parking project is approximately \$550,000. Therefore, approximately \$300,000 – 500,000 must be financed through “outside” sources such as: grants, donations, sponsorships, and in-kind contributions of boulders, supplies/services (approved by the County).

If you would like to donate to this long overdue project, please make checks payable to the
“Community Foundation for SW Washington” with “for” notation on the check as follows: **Felida --All Abilities Area.**

Send checks to: **Community Foundation for Southwest WA,
610 Esther Street, Suite 201, Vancouver, WA 98660-9923**

The Top 10 “Wish List” Items for All Abilities Play area in Felida Park?

Felida NA Board volunteers conducted extensive outreach for years to gather input from the community at more than 30 public events including: *NA's July 4 Children's Parade & Community Celebration in Felida Community Park, Special Needs Klinekids Fishing, and Clark County Public Safety Open Houses, CPU Earth Day.* 11,000+ participants provided input. *Top ten “wishes” are listed from highest to lowest votes received.*

- rainbow arches (with “children” photo ops cutouts or features at the end of the rainbow)
- boat (already purchased with a grant and stored on County Parks premises)
- merry-go-round (safe for special needs kids)
- teeter-totter (rounded/subject to County approval) aka swing arch
- sheriff's car or RR locomotive, both accessible by wheelchairs (subject to County approval)
- airplane (subject to County approval)
- drums other instruments with vibrating cylinders to feel/hug (for sight/hearing-impaired)
- “lily pads” (natural pads/slices of cut trees – many in the Parks yard in Lewis Park)
- carved boulders or sculpted shapes (e.g., ducks, owls, toad/frog, turtles, deer, bear, fish, shells)
- benches and/or curved wall segments - suitable for sitting for “kids” from 2 to 102.

MEDICATIONS, SHARPS, AND INHALERS DISPOSAL and HOUSEHOLD WASTE RECYCLE

- Do NOT recycle expired, recalled, unwanted, or other medications.
- DO NOT place medications, inhalers, Sharps in any garbage containers (at home or off-site). These are dangerous to the community, children, families, municipal employees, pets, and environment. Medications contaminate water.
- For help with proper disposal of Sharps, inhalers, prescription drugs, controlled or non-controlled substances, tranquilizers - visit **Green Neighbors** website for guidance and/or click on several categories as applicable:
 - Non-controlled substance disposal (/medication-disposal/non-controlled-substance-disposal)
 - Controlled substance disposal (/medication-disposal/controlled-substance-disposal)
 - Sharps disposal (/reduce-and-recycle/sharps-disposal)
 - Medication take-back events (/medication-disposal/take-back-events)
- Green Neighbors website also provides information/articles for household hazardous waste (/household-hazardous-waste). Or choose Recycling A-Z: (/reduce-and-recycle/recycling-a-z).

Household Waste Recycle: consult 2018-2019 Guide to Recycling in Clark County.

If you did not receive or lost it, visit **Waste Connections** website at: wcnorthwest.com – RecycleRight for hints/advice/information on recycling: <https://wcnorthwest.com/recycling>

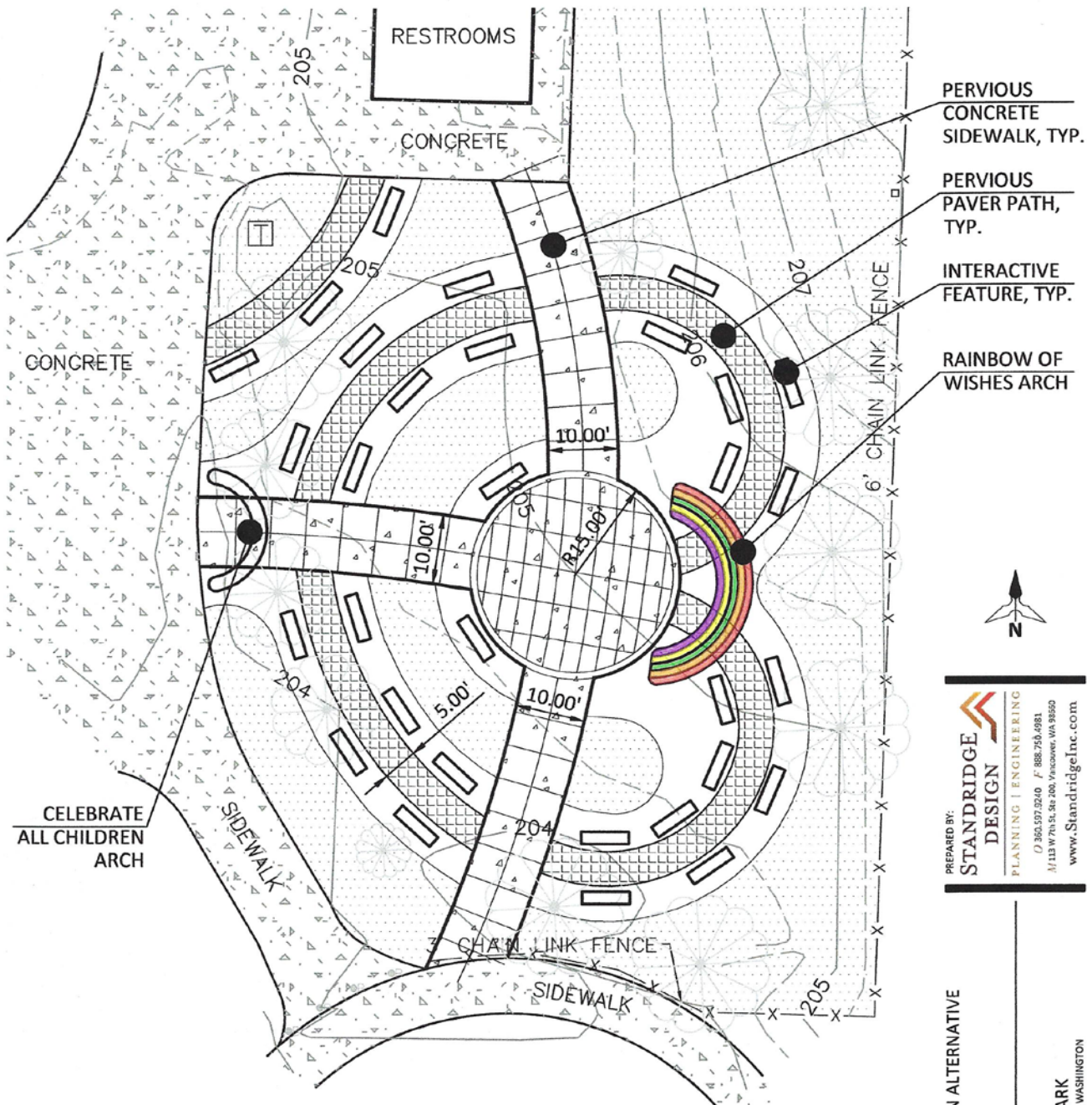
Plastic - bottles, jugs, tubs (no hoses, stretchy plastic, chemicals, plastic clam clamshells).

Paper - cardboard, cartons, paperboards (no to-go containers, food-soiled paper, papers towels).

Metal: aluminum, steel, tin cans, aerosol cans, aluminum trays (no propane tanks, auto parts, sharp items).

Glass BIN only: glass jars, bottles (no cookware, dishware, plate glass.).

YARD WASTE: LARGE CONTAINERS available for a fee from Waste Connections.



SHEET LEGEND		
SYMBOL	DESCRIPTION	AREA (SF)
	PERVIOUS CONCRETE PAVING	1,960
	PERVIOUS PAVERS	1,230

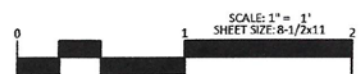
PREPARED BY:
STANDRIDGE DESIGN
 PLANNING | ENGINEERING
 (703) 365-1973
 (703) 888-7559
 1113 W 7th St, Ste 200, Vancouver, WA 98660
 www.StandridgeInc.com

SITE PLAN ALTERNATIVE
FELIDA PARK
 CLARK COUNTY, WASHINGTON

PROJECT NO.: SDI001
 DESIGN BY: CDB
 REVIEWED BY: LKS
 DATE: 04/20/2017

ALTERNATIVE

1A



Dr. Milada Allen, President
Felida Neighborhood Association
c/o P.O. Box 61552
Vancouver, WA 98666



•Recognized Neighborhood Association of Clark County, WA
•Member of Neighborhood Associations Council of Clark County (NACCC)
•Supporting Clark County Sheriff Auxillary

PRESORT
STANDARD U.S.
POSTAGE PAID
VANCOUVER WA
PERMIT NO. 130



INSIDE THIS NEWSLETTER:
Information on July 4 Children's Parade and After Parade Community Celebration in Felida Park.