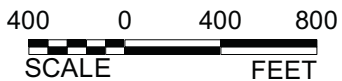
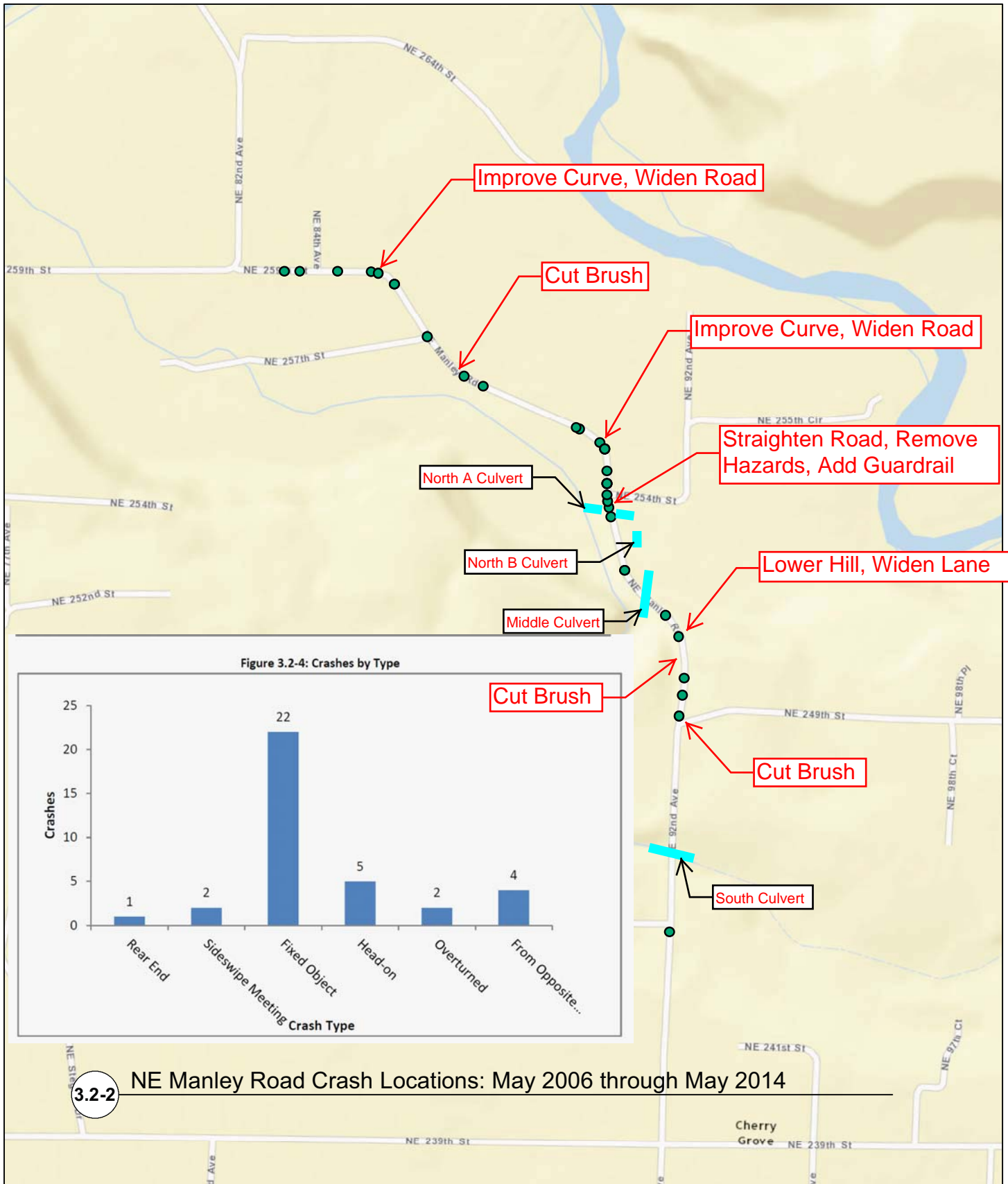


MXD: H:\profile\18684 - NE Manley Road & Culvert Repair Project\Crash Analysis\TSM\Map\Map.mxd USER: sbussey DATE: Monday, August 10, 2015 2:09 PM



**Legend**

● Crash Location

Figure 3.2-2 - NE Maley Road Crash Locations  
NE Manley Road and Culvert Project  
(NE 82nd Avenue to NE 244th Street)  
Clark County, Washington