

Tell us what you think about your future neighborhood park!

March 2010



Clark County is getting ready to design a new park in your neighborhood. We need your help!

Tower Crest Neighborhood Park is located on NE 54th Street at 63rd Avenue in the East Minnehaha neighborhood (see map on back). This 6.5-acre undeveloped park site is adjacent to a city water tower and is heavily wooded with informal trails.

Project schedule

Preliminary planning and design has started and should be complete by the end of the year. Construction is scheduled to begin in 2011, if funding is available.

Who pays for the park?

Design and construction of Tower Crest Neighborhood Park will be paid for by park impact fees, which are collected when residential building permits are issued, and real estate excise taxes, which are collected whenever property is sold.

Maintenance of the park after construction will be paid for by the Greater Clark Parks District, which is a special property tax district approved by voters in the unincorporated urban area of Clark County in 2005.

Project contact information

Matt Hall, Project Manager
Clark County Public Works
P.O. Box 9810
Vancouver, WA 98666-9810
Phone: (360) 397-6118 ext. 4225
E-mail: Matt.Hall@clark.wa.gov

Or visit us on the Web:

www.clarkparks.org/projects/towercrest.htm

Help us plan and design the park

Major decisions about what the park will look like and what features it will include will be made during planning and design. Project staff relies on public input to help guide this process.

Your input will help us:

- Understand the needs or concerns of your neighborhood.
- Understand which park features are most important to you and your neighbors.
- Learn about the potential for community fundraising and volunteer projects to enhance the park.

Please fill out our comment form

Please take a few minutes to fill out the enclosed comment form about this park development project. Your answers are important, and will be used to help prepare a proposed concept plan showing what this park might look like. This concept will be presented at an upcoming public meeting for more input.

Our parks are designed for all ages and abilities, so please invite everyone in your household to help fill out the comment form. We have included a postage-paid envelope to make it easier to respond. If you prefer, you may fill out the comment form online at this Web page:

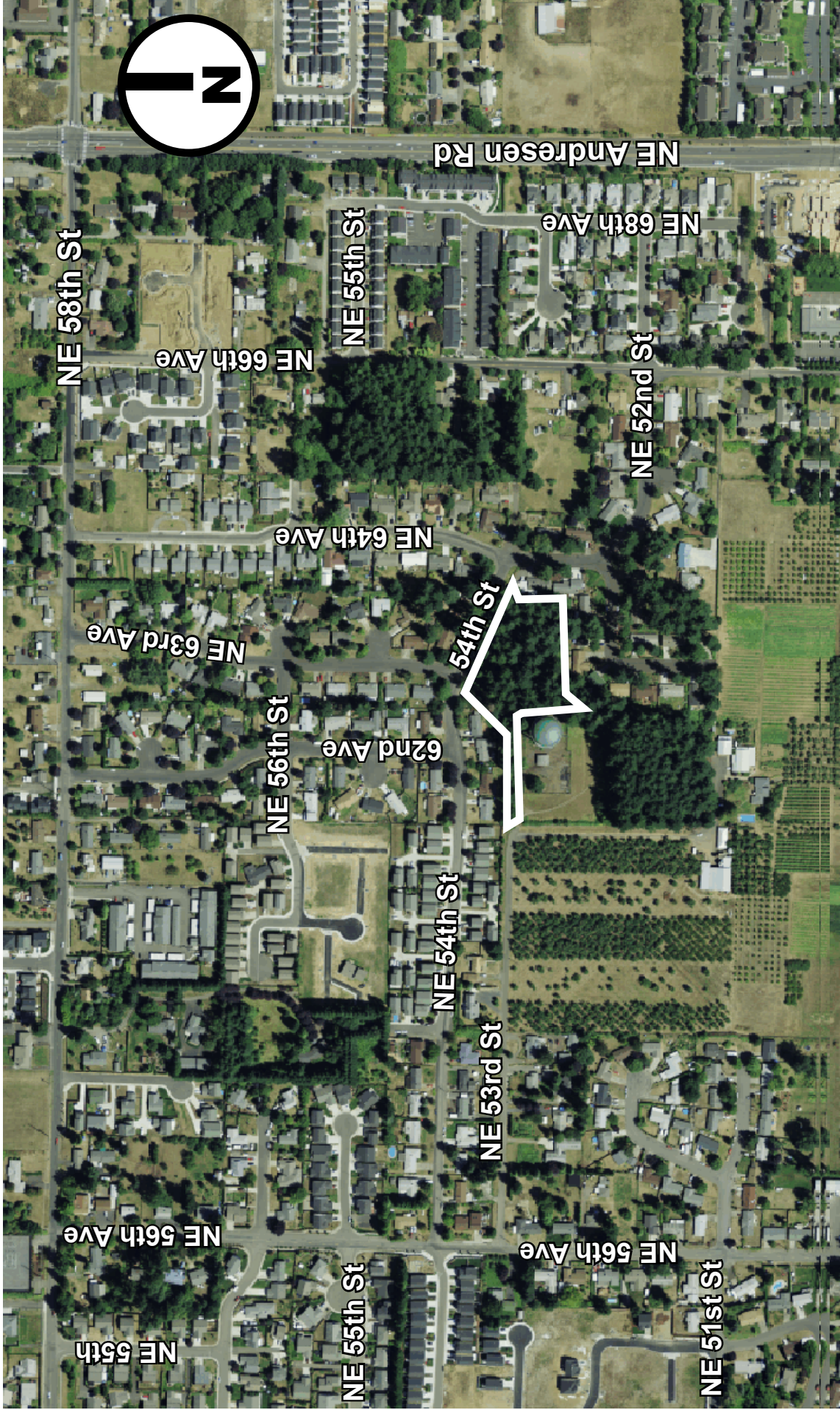
www.clarkparks.org/projects/towercrest.htm.

All comments must be received by March 28, 2010.



VANCOUVER-CLARK
PARKS & Recreation

Tower Crest Neighborhood Park



For other formats, contact the Clark County ADA Office: **Voice** (360) 397-2000;
Relay 711 or (800) 833-6388; **Fax** (360) 397-6165; **E-mail** ADA@clark.wa.gov.