

Whipple Creek Watershed-Scale Plan

A study to analyze watershed health and identify ways to protect the creek for years to come

1

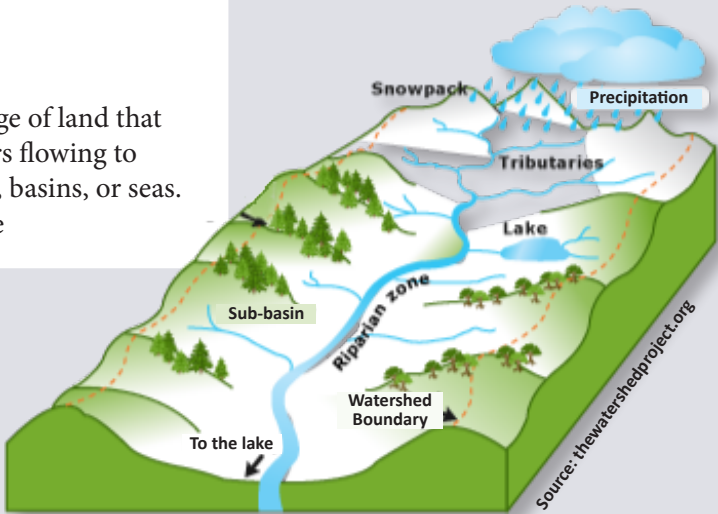
WHAT is a watershed?

WHY is this study important to Clark County?

As Clark County develops, the landscape changes. More roads, buildings, sidewalks add to the amount of land that can no longer soak up rain. These changes force more water to the creeks and streams changing the health of the waterway. This project is examining the current health of Whipple Creek and the types of uses on the landscape.

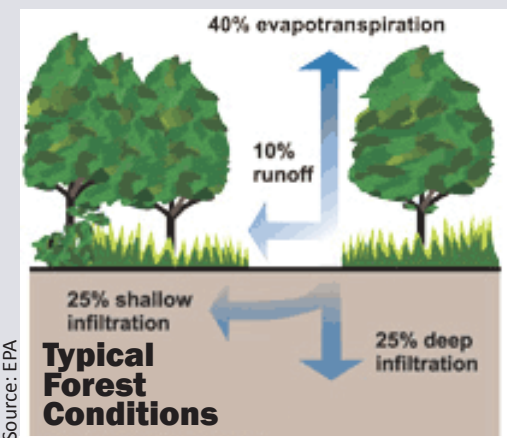
As the landscape is projected to change with future development, this project will identify opportunities to protect the creek, including its water quality, habitat for wildlife and changes to land development to let the water soak into the ground where it falls.

wa·ter·shed
/wädər-SHed/
noun
1. an area or ridge of land that separates waters flowing to different rivers, basins, or seas.
synonym: divide



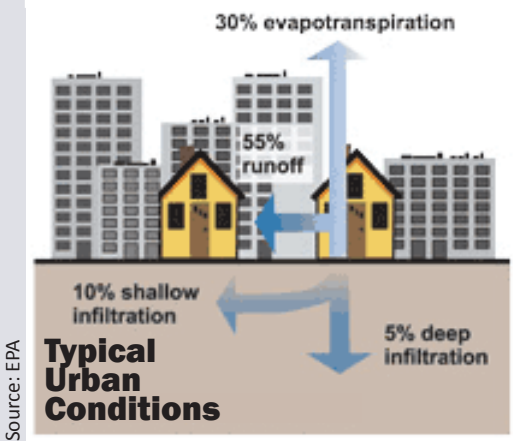
HOW do we identify watershed health?

The goal is to find balance with all of the components that create a healthy watershed while meeting our community goals.



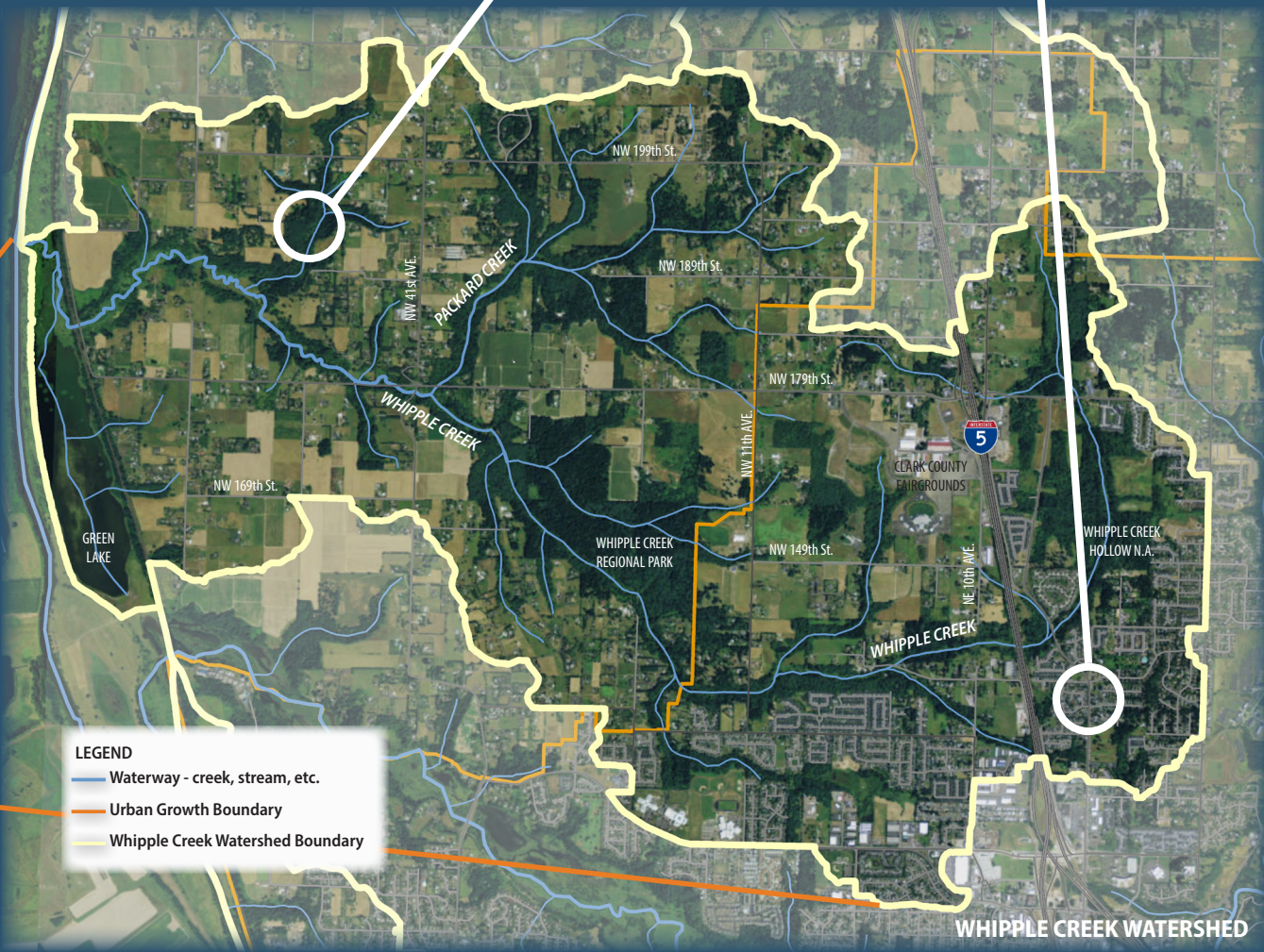
In forests, more than half of the rain water soaks into the ground. Other water is captured on the trees and evaporates. Very little water will actually “runoff” into the nearby waterway. This will protect the waterway from erosion and pollution.

In urban areas, there is very limited space where the rainwater can soak into the ground. The majority of water runs off of hard surfaces to piped systems that lead to waterways. Hard surfaces may have pollutants that are pickup up and carried to the creeks.



WHIPPLE CREEK

- 12** square miles AREA
- 25** miles - length of creek and its tributaries
- 3** three main land uses
 - 22% forest
 - 53% agriculture
 - 25% roads
- 1/3** in the Vancouver urban growth boundary



To learn about Whipple Creek Watershed and this study, visit our web page:
www.clark.wa.gov/public-works/whipple-creek-watershed-plan

The Whipple Creek Watershed-Scale Plan is a requirement of Clark County's National Pollution Discharge Elimination System (NPDES) Phase I Municipal Stormwater Permit (August 2013). The plan follows parameters outlined in the permit S.5.C.5.c.