

Clark County Clean Water Division

An overview of the stormwater program

PUBLIC WORKS

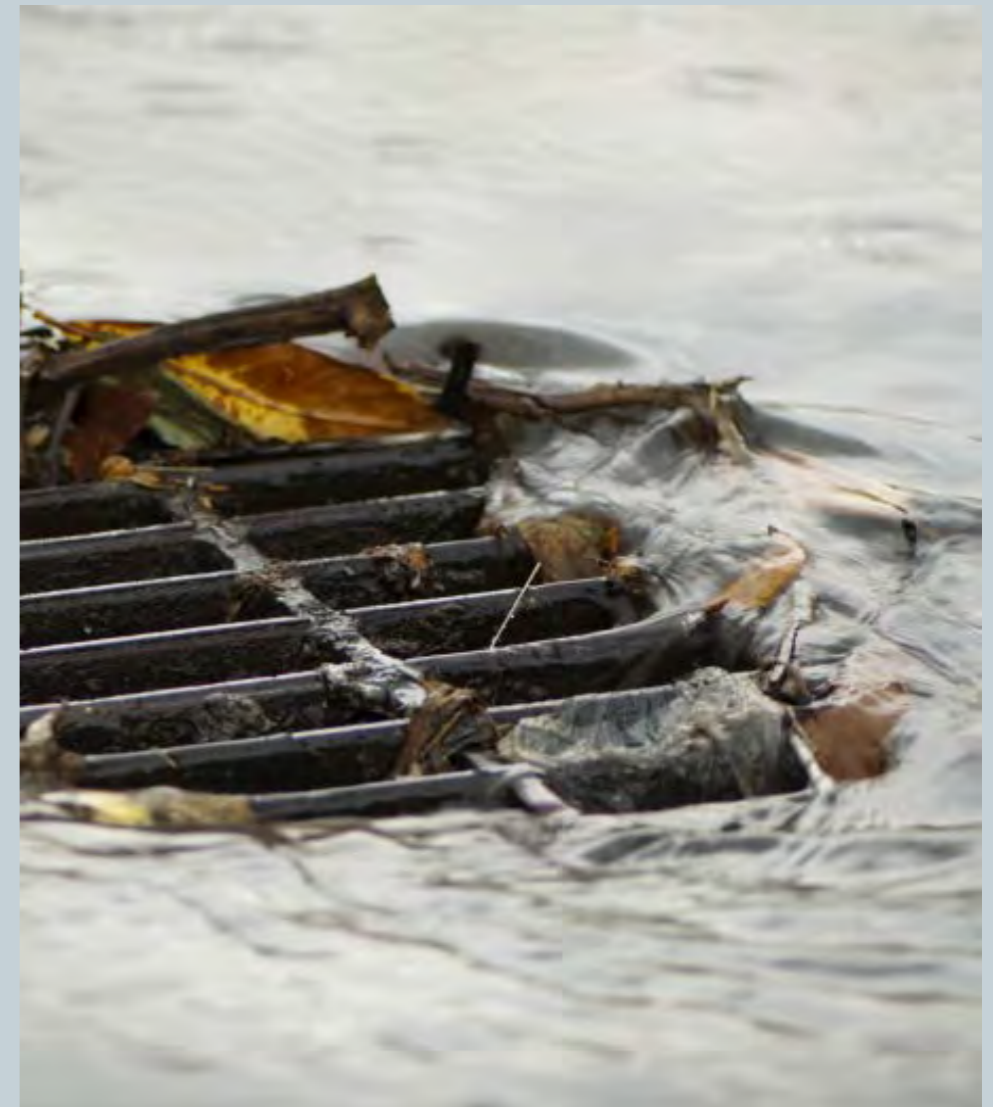
1300 FRANKLIN ST.

Public Service Center

Vancouver, WA 98666-9810

(360) 397-2121

cleanwater@clark.wa.gov



www.clark.wa.gov/stormwater

What is stormwater?

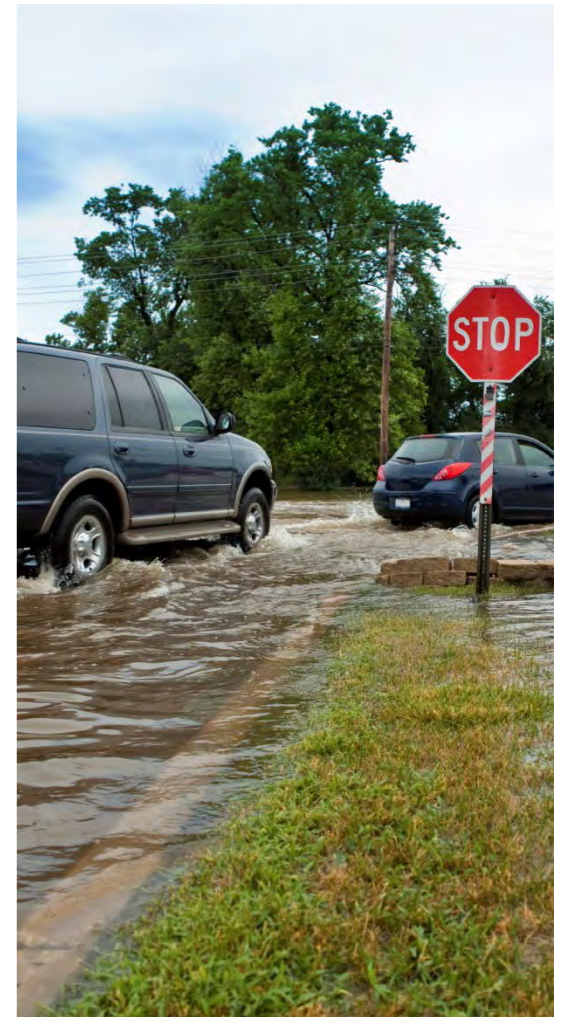


2

Water from rain or melting snow that “runs off” across the land instead of seeping into the ground.

Fact: Stormwater is the #1 threat to water quality in urban areas

- **Impervious surfaces increase amount of stormwater runoff**
- **Runoff causes erosion of bare dirt increasing sediment to waterways**
- **Pollution in runoff from cars, yards, household, and pet waste impacts water quality**



Stormwater example ...



3



2015

Increased impervious surfaces (roads, houses, buildings, sidewalks, etc.) limits where the stormwater runoff can soak into the ground

Why does it matter, why should we care?



4

- Reducing pollution (point and non-point sources) protects water quality
- Managing stormwater runoff reduces volumes that could erode river channels
- Protecting our quality of life for recreational uses such as swimming and fishing
- Protecting wildlife habitat for the diverse species that live in and near our rivers



Who regulates stormwater?



5

Primary Regulatory Authority

State of WA
Dept. of Ecology

WA Water Pollution Control Law
RCW Chapter 90.48

United States
Env. Protection Agency

Federal Water Pollution Control Act
USC Title 33, Section 1251

Primary CC Authority

BOCC

County
Manager

CC Code 13.26A, 40.386 – plus
other related planning codes

Primary Responsible County Departments

Public Works

+

Clark County
Departments

Community Development
Community Planning
Prosecuting Attorney
Public Health

Stakeholders

Technical Advisory
Stakeholder Advisory
Development Engineering
Advisory Board

Other
municipal
NPDES
permittees

General
Public

Clean Water Division programs:



6

- Inventory and Mapping
- Stormwater Capital Construction
- Maintenance and Operations
- Assessment and Monitoring
- Technical Assistance and Enforcement
- Education and Outreach
- Fee Administration

Identifies and maps the location of all stormwater features in GIS



Clean Water Division programs:



7

Builds new facilities to manage runoff for quantity and quality or retrofits old facilities

- **Inventory and Mapping**
- **Stormwater Capital Construction**
- **Maintenance and Operations**
- **Assessment and Monitoring**
- **Technical Assistance and Enforcement**
- **Education and Outreach**
- **Fee Administration**



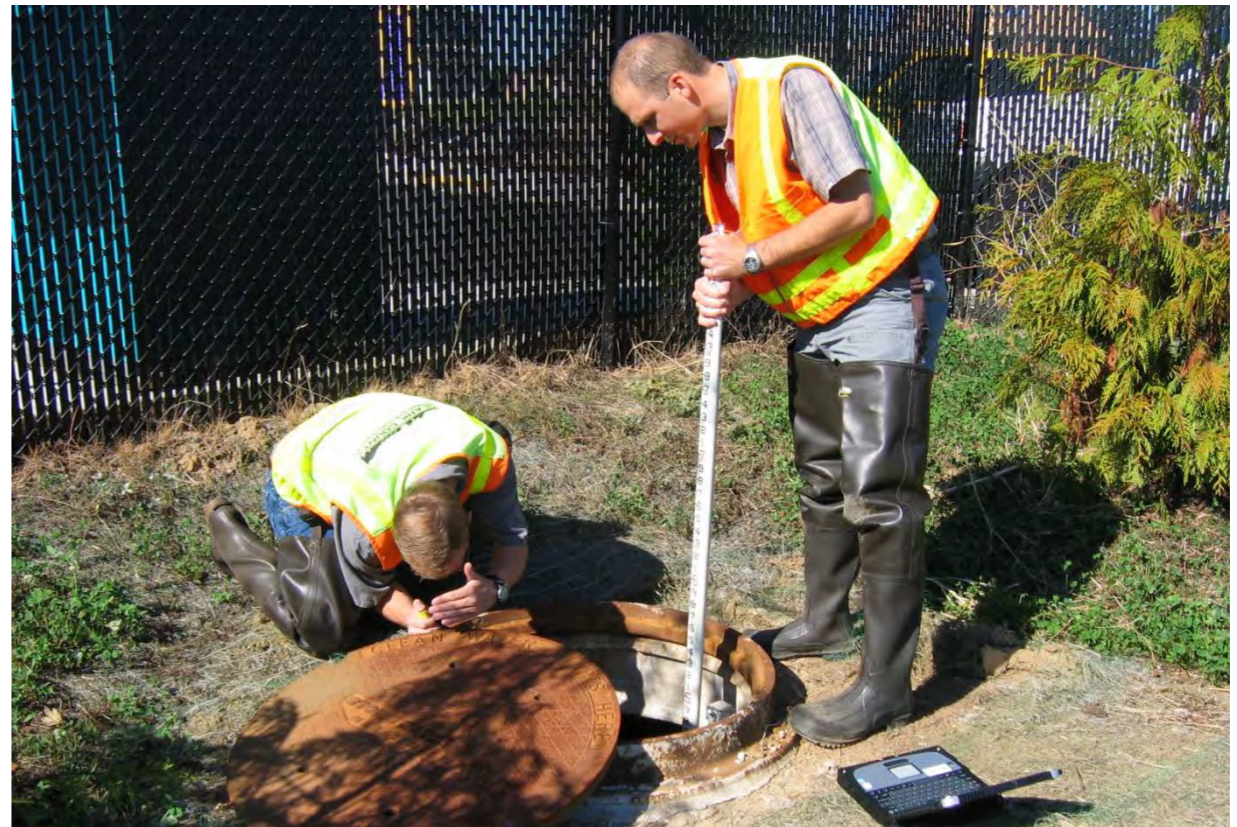
Clean Water Division programs:



8

- **Inventory and Mapping**
- **Stormwater Capital Construction**
- **Maintenance and Operations**
- **Assessment and Monitoring**
- **Technical Assistance and Enforcement**
- **Education and Outreach**
- **Fee Administration**

County staff inspect, repair and maintain county-owned facilities. We also work with owners of private facilities for ongoing maintenance.



Clark County stormwater system: more than 1,000 county owned facilities, including 450 detention/retention ponds; 400 miles of stormwater pipes; 11,000+ catch basins; 2000+ drywells

Clean Water Division programs:



9

- **Inventory and Mapping**
- **Stormwater Capital Construction**
- **Maintenance and Operations**
- **Assessment and Monitoring**
- **Technical Assistance and Enforcement**
- **Education and Outreach**
- **Fee Administration**

Monitoring provides a picture of the health of local waterways. Testing include water chemistry, pollution and aquatic bugs (indicator of health).



Clean Water Division programs:



10

- Inventory and Mapping
- Stormwater Capital Construction
- Maintenance and Operations
- Assessment and Monitoring
- **Technical Assistance and Enforcement**
- Education and Outreach
- Fee Administration



• **Site visits** – help businesses identify problems and solutions

Technical assistance – support Homeowner's associations with inspection and maintenance

Code enforcement – works with owners to correct problems

Clean Water Division programs:



11

- Inventory and Mapping
- Stormwater Capital Construction
- Maintenance and Operations
- Assessment and Monitoring
- Technical Assistance and Enforcement
- Education and Outreach
- Fee Administration



Raise awareness of stormwater issues as well as affect behavior to reduce pollution. Audiences include general public, businesses, citizens, homeowner's associations, and partner agencies.

Clean Water Division programs:



12

- **Inventory and Mapping**
- **Stormwater Capital Construction**
- **Maintenance and Operations**
- **Assessment and Monitoring**
- **Technical Assistance and Enforcement**
- **Education and Outreach**
- **Fee Administration**

Examples of educational messages:

- **Canines for Clean Water** – pick up pet waste
- **Business source control** – don't dump or wash materials down storm drains, repair dumpsters
- **Lawn care** – reduce chemical use and sweep (don't rinse down a drain)
- **Green Neighbors** – information that applies to residential homes
- **Schools** – Student watershed monitoring network partnership with the City of Vancouver
- **Spill Kit Program** – provide information on how to clean up spills to prevent pollution
- **Small Acreage Program** – large lot properties can manage manure and other runoff risks

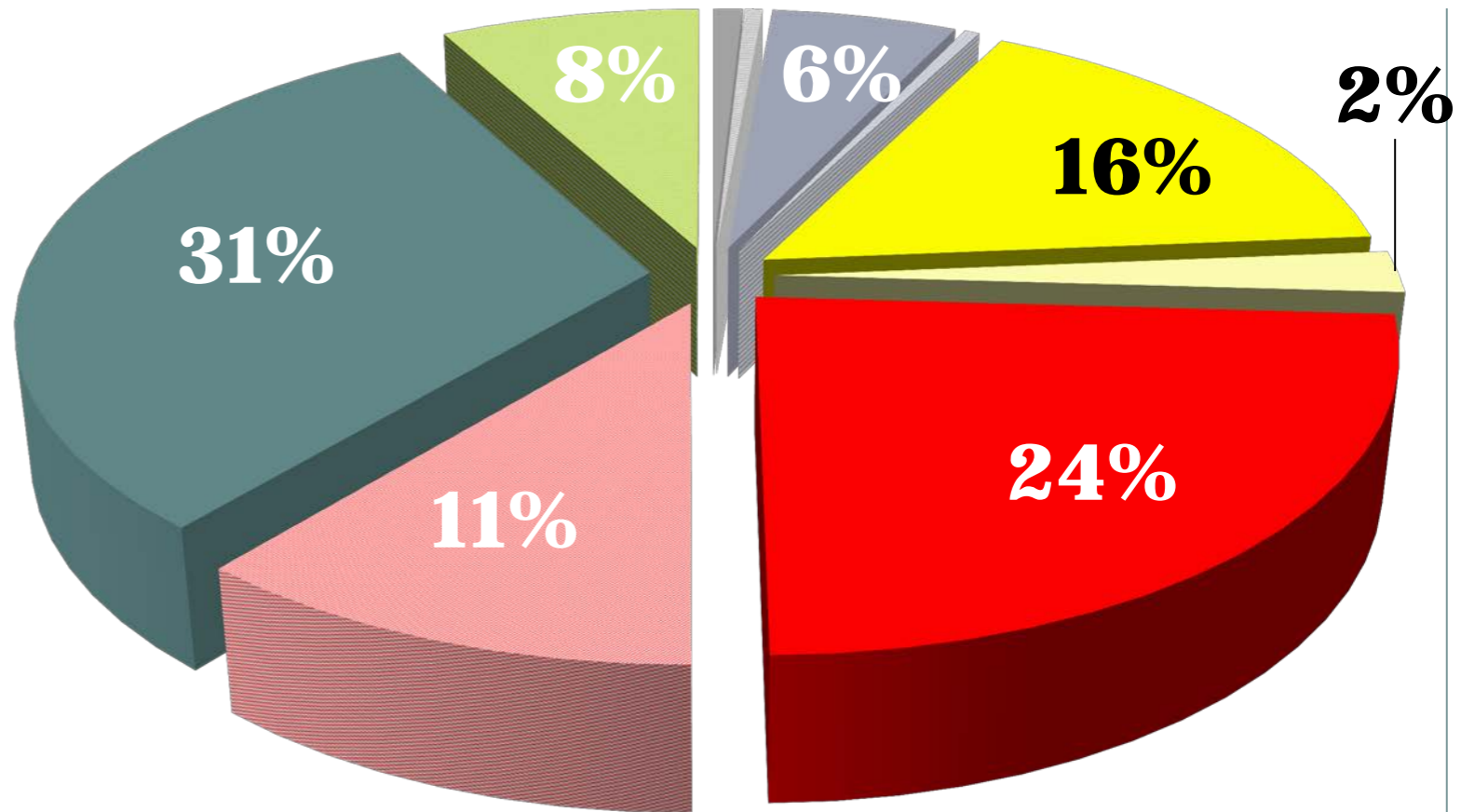
Clean Water Division programs:



13

- Inventory and Mapping
- Stormwater Capital Construction
- Maintenance and Operations
- Assessment and Monitoring
- Technical Assistance and Enforcement
- Education and Outreach
- Fee Administration

- Urban WSDOT
- Urban Multi Family
- Urban Business
- Urban County Roads
- Urban SF Residential
- ▨ Rural WSDOT
- ▨ Rural Multi Family
- ▨ Rural Business
- ▨ Rural County Roads
- ▨ Rural SF Residential



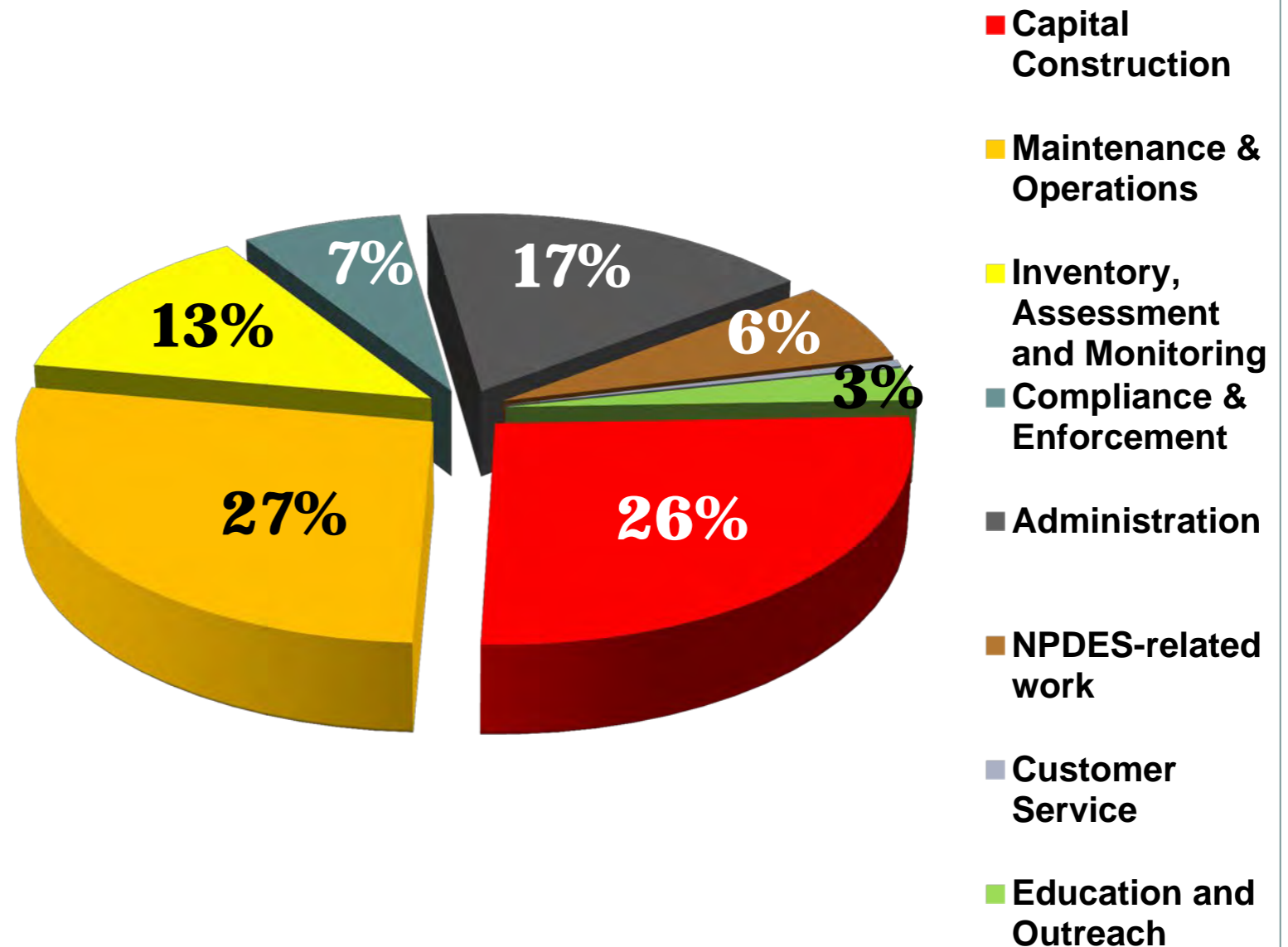
Where the monies come from - CWD manages the Clean Water Fee program for properties with impact to stormwater runoff

Clean Water Division programs:



14

- Inventory and Mapping
- Stormwater Capital Construction
- Maintenance and Operations
- Assessment and Monitoring
- Technical Assistance and Enforcement
- Education and Outreach
- Fee Administration



Where the monies go to manage the program – CWD invests approximately \$13.4 million for the 2015/2016 budget cycle

What are the changes for 2016?



15

Updates to the Clark County Stormwater Manual and related municipal code:

- **New stormwater manual – Administration, BMP Design, Source Control and Maintenance/Operations**
- **Updated codes – edits to CCC 13.26A Water Quality and repeal of CCC 40.385 Stormwater and Erosion Control – Replace with 40.386**
- **Requirement to use Low Impact Development where feasible, including bioretention, rain gardens, infiltration, etc.**

The goal is to mimic the natural landscape – let stormwater infiltrate into the ground as close to the source as possible and minimize pollution of that runoff.

Do you need more information?



16

Contact the Clean Water Division:

1300 Franklin St.
Vancouver, WA 98666-9810
(360) 397-2121
[www.clark.wa.gov/
stormwater](http://www.clark.wa.gov/stormwater)

Heath Henderson
Director, Public Works Services

Dean Boening
Division Manager, Clean Water



Protecting our waterways for generations to come