

Curtin Creek Community Park

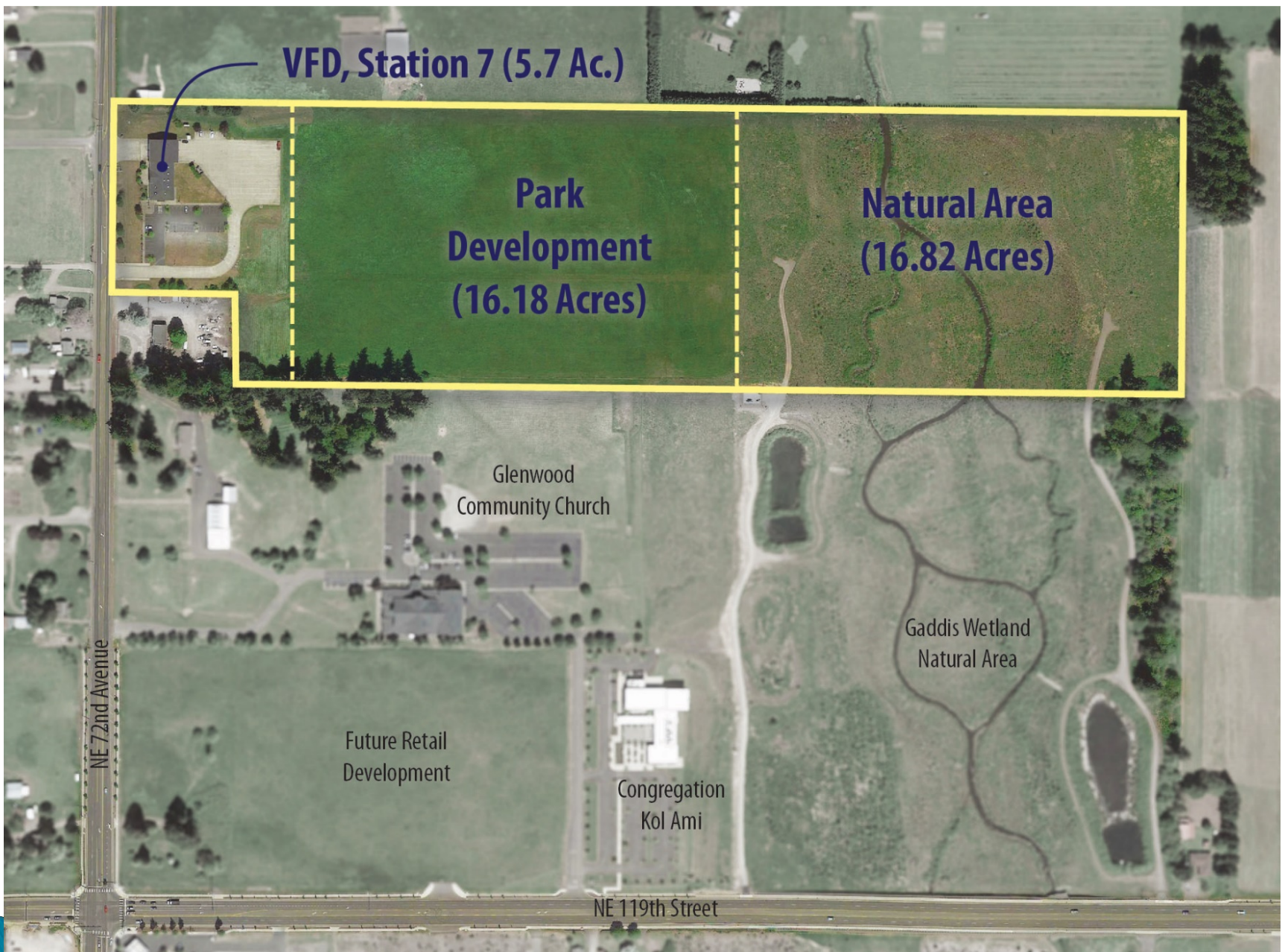
Parks Advisory Board Presentation

February 11, 2020

Clark County Public Works



CLARK COUNTY
WASHINGTON



Curtin Creek Community Park

Phase 1 - Public Outreach / Master Planning Process

Phase 2 - Design/ROW/Permitting

Phase 3 - Construction



Curtin Creek Community Park

Phase 1 - Public Outreach / Master Planning Process

- Stakeholder Interviews (8)
- News Release/Mailings (7,600+)
- Web Site
- On-Line Survey (600+)
- Community Open House (100+)





Curtin Creek COMMUNITY PARK

Curtin Creek Community Park will be located at 12603 NE 72nd Avenue, in the Greater Brush Prairie Neighborhood, east of the fire station. **We need your ideas to plan the future development of the park.**

Please join us at a Community Open House
November 13, 2019 | 5:30 to 7:30 p.m.
Paine High School, 11311 NE 119th St,
Vancouver, WA 98662

Complete our Community Survey
www.surveymonkey.com/h/7575893

For more information about the project
clark.wa.gov/public-works/curtin-creek-community-park

For interpretation or translation services for non-English speakers, or otherwise making materials available in an alternate format, contact Clark County Public Works Title II Coordinator via email at CPWP-TITLEII@clark.wa.gov, or phone 360.587.4565. Hearing impaired request may call the Washington Relay Center at 711.

Para preguntas relacionadas con el programa de Título II de Open Público del condado de Clark, o para servicios de interpretación o traducción para personas que no hablen inglés, o para que los materiales estén disponibles en un formato alternativo, comuníquese con el coordinador del Título II de Open Público del condado de Clark por correo electrónico a CPWP-TITLEII@clark.wa.gov o por teléfono a 360.587.4565. Las personas con problemas de audición o habla pueden llamar a Washington Relay Center al 711.

Curtin Creek Community Park

Phase 1 - Public Outreach / Master Planning Process

Conceptual Ideas Identified

- Picnic shelters
- Restroom Building (with storage)
- Concessions area
- Trails/bike paths
- Play structure
- Cover for play structure
- Nature play area
- Picnic tables
- Park benches
- Skate park
- Volleyball
- BMX track
- Adult Fitness/Cross Fit
- Nature observation
- Bike pump track
- Water park/splash pad
- Dog park area
- Sport courts
- Tennis courts
- Racquetball
- Pickleball Court
- Soccer field
- Lacrosse field
- Baseball field
- Batting cages
- Softball field
- Rugby field
- Multi-purpose field
- Athletic field lights
- Futsol
- Disc golf
- Swimming pool
- Golf driving range



Preferred Conceptual Master Plan

Curtin Creek
COMMUNITY PARK



ROBERTSON
ENGINEERING, PC

wsp LSW
ARCHITECTS

- | | | | | |
|---|--------------------------------|------------------------------------|---|-----------------------------|
| 1 Natural Grass Rugby/Soccer Field (360'x210') | 4 Tennis/Pickleball Courts | 7 Restroom Building w/ Storage | 10 All-Inclusive Playground | 13 Open Lawn Space |
| 2 Synthetic Turf Soccer (110 yd. x 70 yd.) / Little League (200') w/ lights | 5 Basketball/Futsal Court | 8 Connection to existing Disc Golf | 11 Natural Feature | 14 Picnic Area with Shelter |
| 3 Parking (160 Stalls) | 6 Solid Waste/Recycling Center | 9 Drop-off Area / Entry Plaza | 12 Trail/Bike Path (concrete & asphalt) | 15 Wetland Viewpoints |



January 2020

Curtin Creek COMMUNITY PARK

clack.wa.gov/public-works/curtin-creek-community-park

Curtin Creek Community Park

Rough Order of Magnitude (R.O.M.) Construction Cost Estimate

R.O.M. Sub-Total	\$5,618,408
Contingency (20%)	\$1,123,682
Sales Tax (8.4%)	\$523,210
Cost Escalation (4.5% per year)	\$326,938
County Permit Fees	\$40,000
Consultant Design Fees (8%)	\$400,000
County Internal Staff Costs	<u>\$400,000</u>
	\$8,432,238
 Project Budget	 \$6,555,000
 Deficit	 <u>\$1,877,238</u>



Technical Advisory Team – Deficit Reduction Ideas

	Cost Savings	Yes	No	Maybe	Comments
Remove Underdrainage at the Rugby Field	\$126,360	✱			Possible Grant or Club Contribution or Phasing
Remove Athletic Field Lighting	\$300,000	✱			Possible Grant or Club Contribution or Phasing
Parking Lot and Pedestrian lighting	\$71,000	✱			
Reduced Play Structure	\$50,000	✱			Possible phasing Opportunity
Reduce Baseball Backstop	\$24,250	✱			
50% Reduction of the Number of Picnic Tables	\$27,000	✱			
Eliminate Storage Component of Restroom Building	\$65,312	✱			
50% Reduction in Large Shelter Size (from 68'x59' to 50'x40')	\$157,349			✱	Research Pre-Engineered Structure
50% Reduction in Small Shelter Size (from 36'x33' to 30'x20')	\$37,151			✱	Research Pre-Engineered Structure
Eliminate Basketball/Futsal Sport Court - \$39,413	\$39,413		✱		Possible Phasing or Alternate Bid Opportunity
Eliminate Tennis/Pickle Ball Sport Court - \$53,250	\$53,250		✱		Possible Phasing or Alternate Bid Opportunity
Eliminate Irrigation of Open Grass Areas	\$223,118	✱			
Phase Parking (50 stalls)	\$82,933	✱			
ROW Dedication Reduction Based on Purchase Agreement (50%)	\$54,858	✱			
Delete Geotextile Fabric in Landscape	\$7,028			✱	Pending Discussion with Staff
Delete Landscape Planting Edge	\$7,680			✱	Pending Discussion with Staff
Reduce Trees by 50%	\$24,000	✱			
Reduce Landscape Area by 25%	\$34,841	✱			
Reduce Irrigation in Landscape by 25%	\$11,297	✱			
Delete Landscape Boulders	\$9,000	✱			
Reduce Amenities at Wetland Viewpoints	\$12,000	✱			
Delete Nature Play	\$6,500	✱			Possible Phasing Opportunity
Convert Additional Concrete Trail to Asphalt	\$20,700	✱			
Eliminate Hardscape at Baseball Backstop	\$11,483	✱			Possible Alternate Bid
Eliminate Parallel Path at Sport Courts	\$9,424	✱			Possible Phasing or Alternate Bid

Sub – Total \$1,465,947

Contingency (20%) \$293,189

Sales Tax (8.4%) \$147,767

Escalation to 2021 (4.5% over 12 months) \$85,811

Total \$1,992,714

Amount Over/(Under) Budget \$(115,476)

Curtin Creek Community Park

Next Steps

- Phase 2 – Design/ROW/Permitting
 - ❑ Stakeholder Partnership Opportunities - Follow Up
 - ❑ Grant Opportunities
 - ❑ Public Outreach - Follow Up

- Phase 3 – Construction



Curtin Creek Community Park

Anticipated Project Schedule

	2019				2020				2021				2022			
Phase 1 - Public Outreach / Master Plan Development Process																
Phase 2 - Design/ROW/Permitting																
Phase 3 - Construction																



Questions/Comments/Recommendations?

