

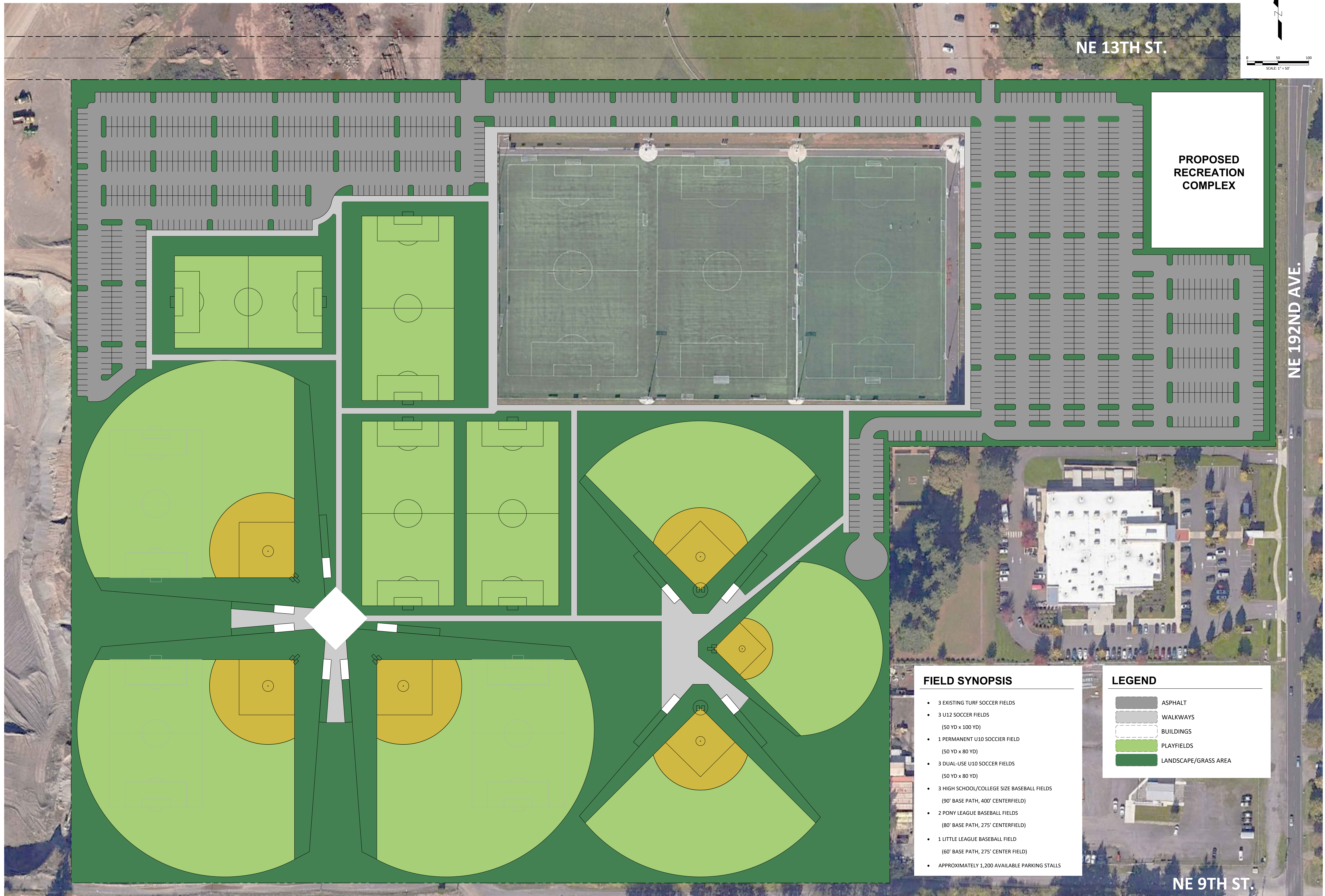


- FIELD SYNOPSIS**
- 3 EXISTING TURF SOCCER FIELDS
  - 3 U12 SOCCER FIELDS (50 YD x 100 YD)
  - 1 PERMANENT U10 SOCCER FIELD (50 YD x 80 YD)
  - 2 DUAL-USE U10 SOCCER FIELDS (50 YD x 80 YD)
  - 3 HIGH SCHOOL/COLLEGE SIZE BASEBALL FIELDS (90' BASE PATH, 400' CENTERFIELD)
  - 3 PONY LEAGUE BASEBALL FIELDS (80' BASE PATH, 275' CENTERFIELD)
  - 1 LITTLE LEAGUE BASEBALL FIELD (60' BASE PATH, 275' CENTERFIELD)
  - APPROXIMATELY 1,250 AVAILABLE PARKING STALLS

- LEGEND**
- ASPHALT
  - WALKWAYS
  - BUILDINGS
  - PLAYFIELDS
  - LANDSCAPE/GRASS AREA

# HARMONY SPORTS COMPLEX - CONCEPT LAYOUT 1





**PROPOSED RECREATION COMPLEX**

- FIELD SYNOPSIS**
- 3 EXISTING TURF SOCCER FIELDS
  - 3 U12 SOCCER FIELDS (50 YD x 100 YD)
  - 1 PERMANENT U10 SOCCER FIELD (50 YD x 80 YD)
  - 3 DUAL-USE U10 SOCCER FIELDS (50 YD x 80 YD)
  - 3 HIGH SCHOOL/COLLEGE SIZE BASEBALL FIELDS (90' BASE PATH, 400' CENTERFIELD)
  - 2 PONY LEAGUE BASEBALL FIELDS (80' BASE PATH, 275' CENTERFIELD)
  - 1 LITTLE LEAGUE BASEBALL FIELD (60' BASE PATH, 275' CENTER FIELD)
  - APPROXIMATELY 1,200 AVAILABLE PARKING STALLS

- LEGEND**
- ASPHALT
  - WALKWAYS
  - BUILDINGS
  - PLAYFIELDS
  - LANDSCAPE/GRASS AREA

**HARMONY SPORTS COMPLEX - CONCEPT LAYOUT 2**



MARCH 3, 2020

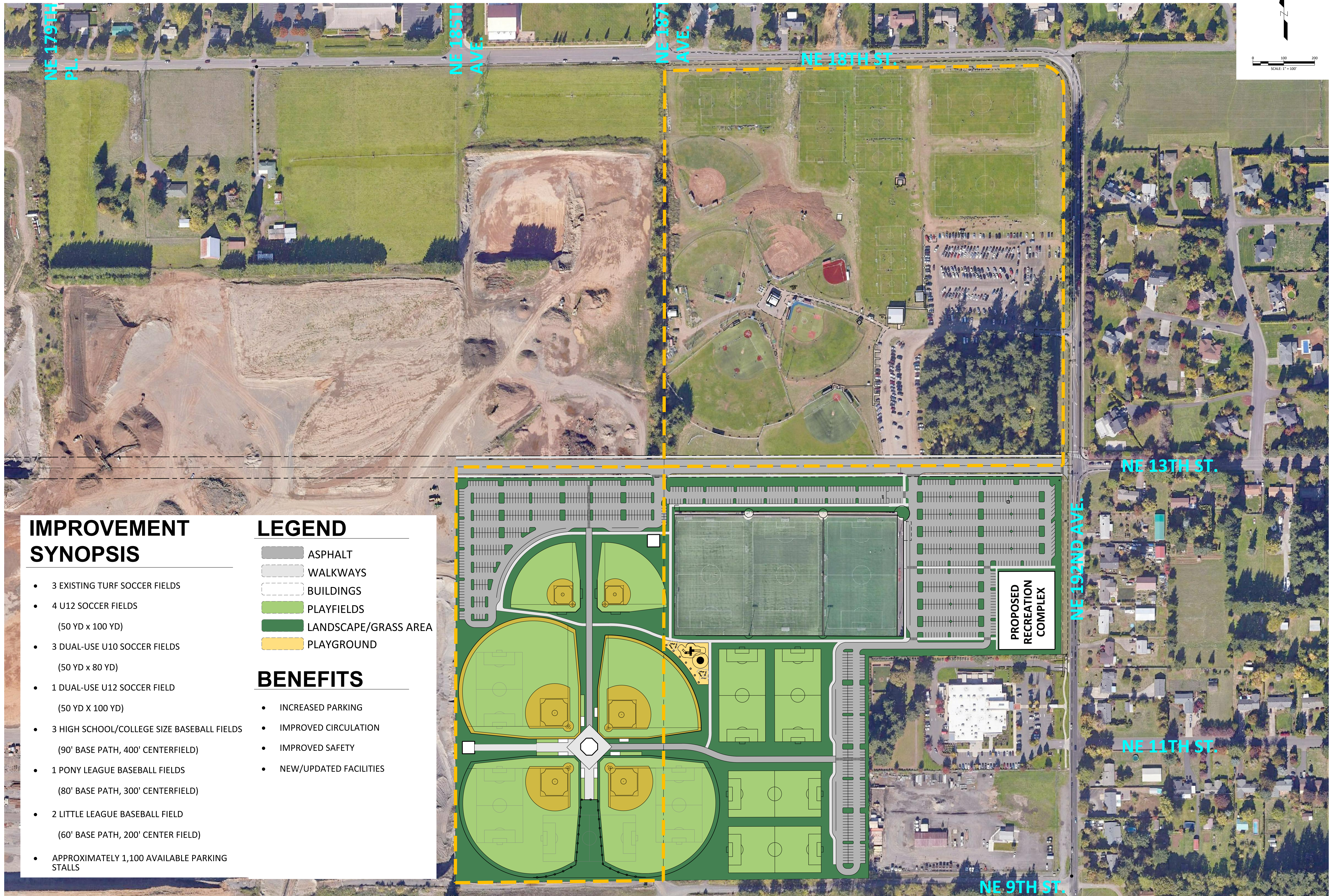
ENERGY PUBLIC WORKS LAND DEVELOPMENT  
www.mackaysposito.com





**HARMONY SPORTS COMPLEX - CONCEPTUAL PROPERTY BOUNDARY EXHIBIT**





### IMPROVEMENT SYNOPSIS

- 3 EXISTING TURF SOCCER FIELDS
- 4 U12 SOCCER FIELDS (50 YD x 100 YD)
- 3 DUAL-USE U10 SOCCER FIELDS (50 YD x 80 YD)
- 1 DUAL-USE U12 SOCCER FIELD (50 YD X 100 YD)
- 3 HIGH SCHOOL/COLLEGE SIZE BASEBALL FIELDS (90' BASE PATH, 400' CENTERFIELD)
- 1 PONY LEAGUE BASEBALL FIELDS (80' BASE PATH, 300' CENTERFIELD)
- 2 LITTLE LEAGUE BASEBALL FIELD (60' BASE PATH, 200' CENTER FIELD)
- APPROXIMATELY 1,100 AVAILABLE PARKING STALLS

### LEGEND

- ASPHALT
- WALKWAYS
- BUILDINGS
- PLAYFIELDS
- LANDSCAPE/GRASS AREA
- PLAYGROUND

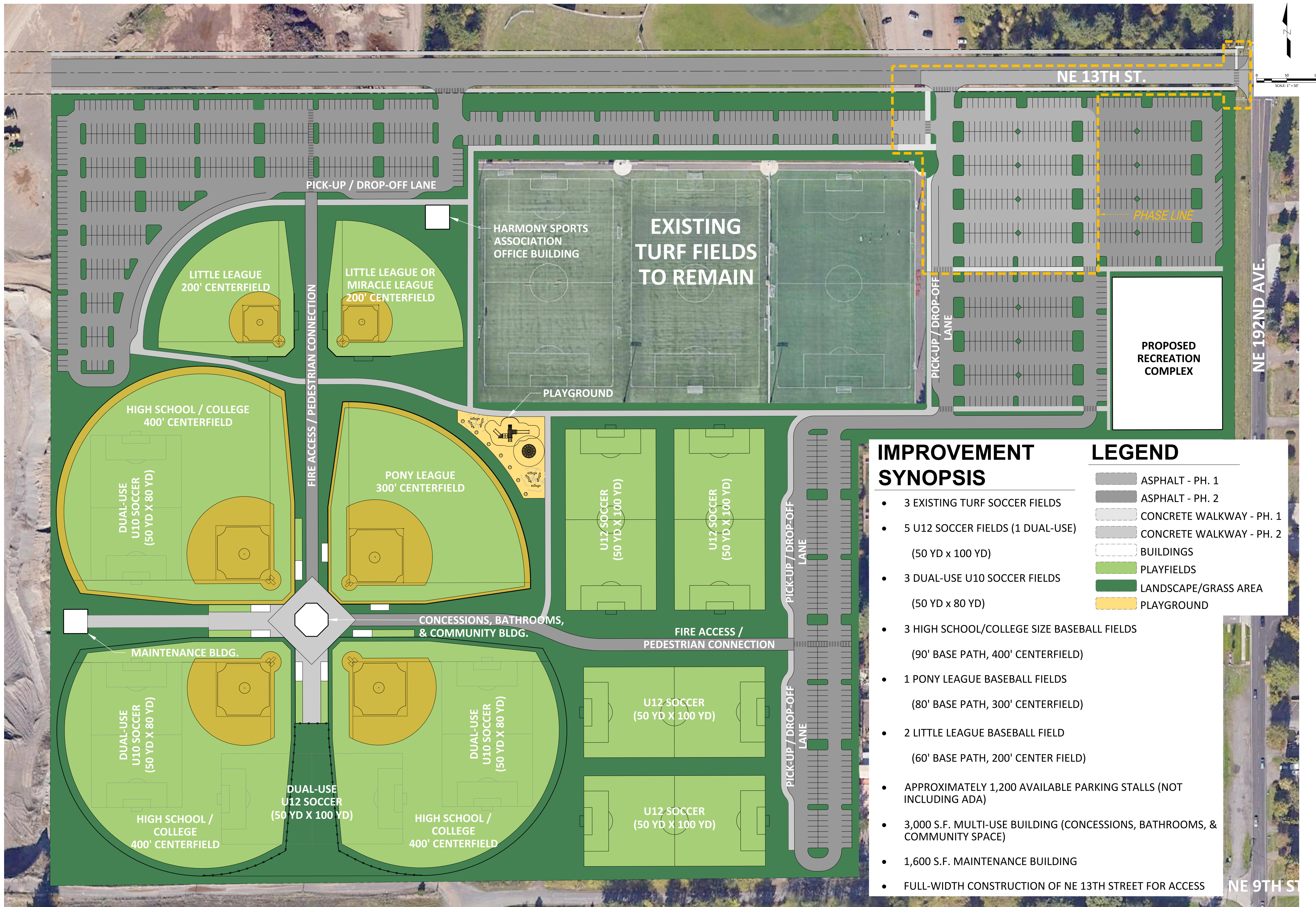
### BENEFITS

- INCREASED PARKING
- IMPROVED CIRCULATION
- IMPROVED SAFETY
- NEW/UPDATED FACILITIES

## HARMONY SPORTS COMPLEX - DRAFT OVERALL SITE PLAN

MARCH 3, 2020





### IMPROVEMENT SYNOPSIS

- 3 EXISTING TURF SOCCER FIELDS
- 5 U12 SOCCER FIELDS (1 DUAL-USE) (50 YD x 100 YD)
- 3 DUAL-USE U10 SOCCER FIELDS (50 YD x 80 YD)
- 3 HIGH SCHOOL/COLLEGE SIZE BASEBALL FIELDS (90' BASE PATH, 400' CENTERFIELD)
- 1 PONY LEAGUE BASEBALL FIELDS (80' BASE PATH, 300' CENTERFIELD)
- 2 LITTLE LEAGUE BASEBALL FIELD (60' BASE PATH, 200' CENTER FIELD)
- APPROXIMATELY 1,200 AVAILABLE PARKING STALLS (NOT INCLUDING ADA)
- 3,000 S.F. MULTI-USE BUILDING (CONCESSIONS, BATHROOMS, & COMMUNITY SPACE)
- 1,600 S.F. MAINTENANCE BUILDING
- FULL-WIDTH CONSTRUCTION OF NE 13TH STREET FOR ACCESS

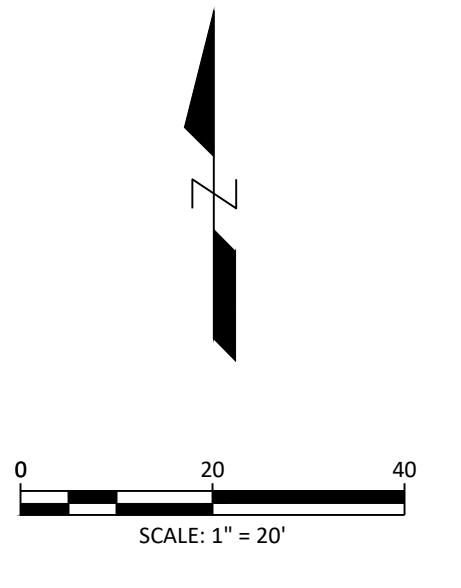
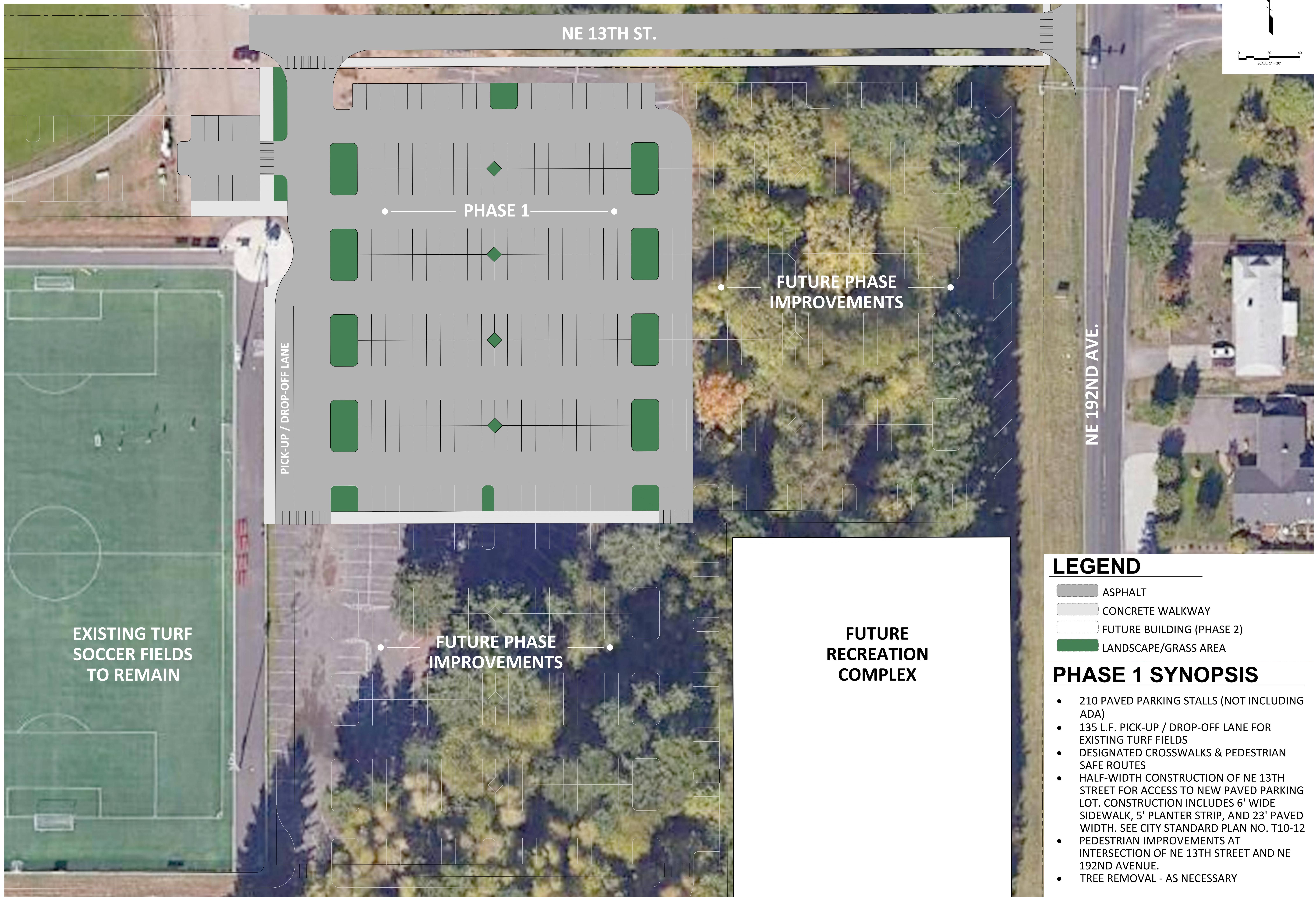
### LEGEND

- ASPHALT - PH. 1
- ASPHALT - PH. 2
- CONCRETE WALKWAY - PH. 1
- CONCRETE WALKWAY - PH. 2
- BUILDINGS
- PLAYFIELDS
- LANDSCAPE/GRASS AREA
- PLAYGROUND





## HARMONY SPORTS COMPLEX - PRELIMINARY IMPROVEMENT PLAN







**LEGEND**

-  ASPHALT
-  CONCRETE WALKWAY
-  FUTURE BUILDING (PHASE 2)
-  LANDSCAPE/GRASS AREA

**PHASE 1 SYNOPSIS**

- 210 PAVED PARKING STALLS (NOT INCLUDING ADA)
- 135 L.F. PICK-UP / DROP-OFF LANE FOR EXISTING TURF FIELDS
- DESIGNATED CROSSWALKS & PEDESTRIAN SAFE ROUTES
- HALF-WIDTH CONSTRUCTION OF NE 13TH STREET FOR ACCESS TO NEW PAVED PARKING LOT. CONSTRUCTION INCLUDES 6' WIDE SIDEWALK, 5' PLANTER STRIP, AND 23' PAVED WIDTH. SEE CITY STANDARD PLAN NO. T10-12
- PEDESTRIAN IMPROVEMENTS AT INTERSECTION OF NE 13TH STREET AND NE 192ND AVENUE.
- TREE REMOVAL - AS NECESSARY

**HARMONY SPORTS COMPLEX - PRELIMINARY PHASE 1 IMPROVEMENTS**







**HARMONY SPORTS COMPLEX  
INVENTORY MATRIX  
03/03/2020**

Harmony Sports Complex - Existing & Proposed Improvements			
Item	Existing	Master Plan (2017 Pre-App)	Proposed
Soccer Field (Acres)	5.2	6.2	4.1
Dual-Use Soccer (Acres)	0	0	3.5
Turf Soccer Field (EA)	3	3	3
High School / College Baseball Fields	2	2	3
Pony League	4	4	1
Little League	1	1	2
Parking (Acres)	6.4	7.77	11.4
Indoor Recreation Center (S.F.)	0	50,000	50,000
Required Street Frontage Improvements (L.F.)	1,340	1,340	1,100
Park / Play Area (Acres)	0	2.2	0.5
Right-of-Way Dedication (Acres)	1.9	1.9	1.7

Other Value Adds:
1) Improved safety, site access, and internal circulation. 2) Less impacts to existing users during construction. 3) Savings on street frontage improvements allowing more funds to be directed to on-site improvements. 4) Brand new baseball, soccer, & building facilities that better meet user needs & are easier to maintain.