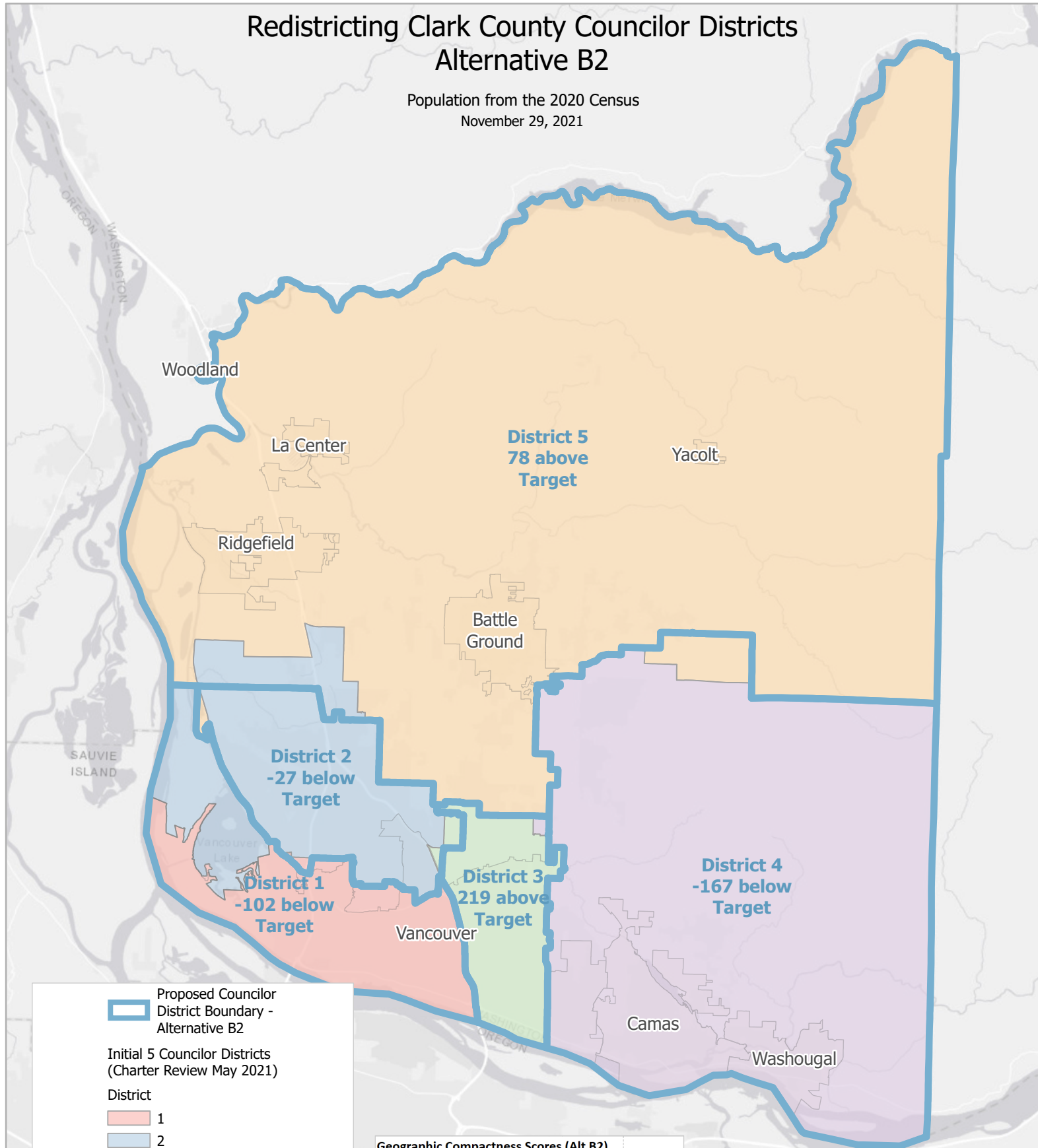


Redistricting Clark County Councilor Districts Alternative B2

Population from the 2020 Census
November 29, 2021



Proposed Councilor District Boundary - Alternative B2

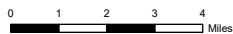
Initial 5 Councilor Districts (Charter Review May 2021)

District

- 1
- 2
- 3
- 4
- 5



NOTE: Information shown on this map was collected from several sources. Clark County accepts no responsibility for any inaccuracies that may be present.



Geographic Compactness Scores (Alt B2)

Polsby Popper Test - A higher score is more compact

Grofman Test - A lower score is more compact

| District | Polsby Popper | Grofman |
|----------------|---------------|---------------|
| 1 | 0.344 | 6.042 |
| 2 | 0.410 | 5.538 |
| 3 | 0.393 | 5.651 |
| 4 | 0.575 | 4.674 |
| 5 | 0.370 | 5.825 |
| Total | 2.093 | 27.729 |
| Average | 0.419 | 5.546 |

Alternative B2

| District | Population | Target Population | Deviation from Target |
|------------------------|------------|-------------------|-----------------------|
| 1 | 100,560 | 100,662 | -102 |
| 2 | 100,635 | 100,662 | -27 |
| 3 | 100,881 | 100,662 | 219 |
| 4 | 100,495 | 100,662 | -167 |
| 5 | 100,740 | 100,662 | 78 |
| Deviation Total | | | 593 |