



# Clark County Influenza Surveillance Update

CDC Week 5: January 30–February 5, 2022

All data are preliminary and may change as more reports are received. As influenza season begins and ends, the number of tests conducted will be smaller than at times of peak activity; therefore, the reliability of positivity figures may decrease as a result. Please note, due to the low levels of reported influenza testing, surveillance for Clark County will be discontinued after Week 5. Please see the [WA DOH Weekly Influenza Report](#) for ongoing influenza updates.

## Summary

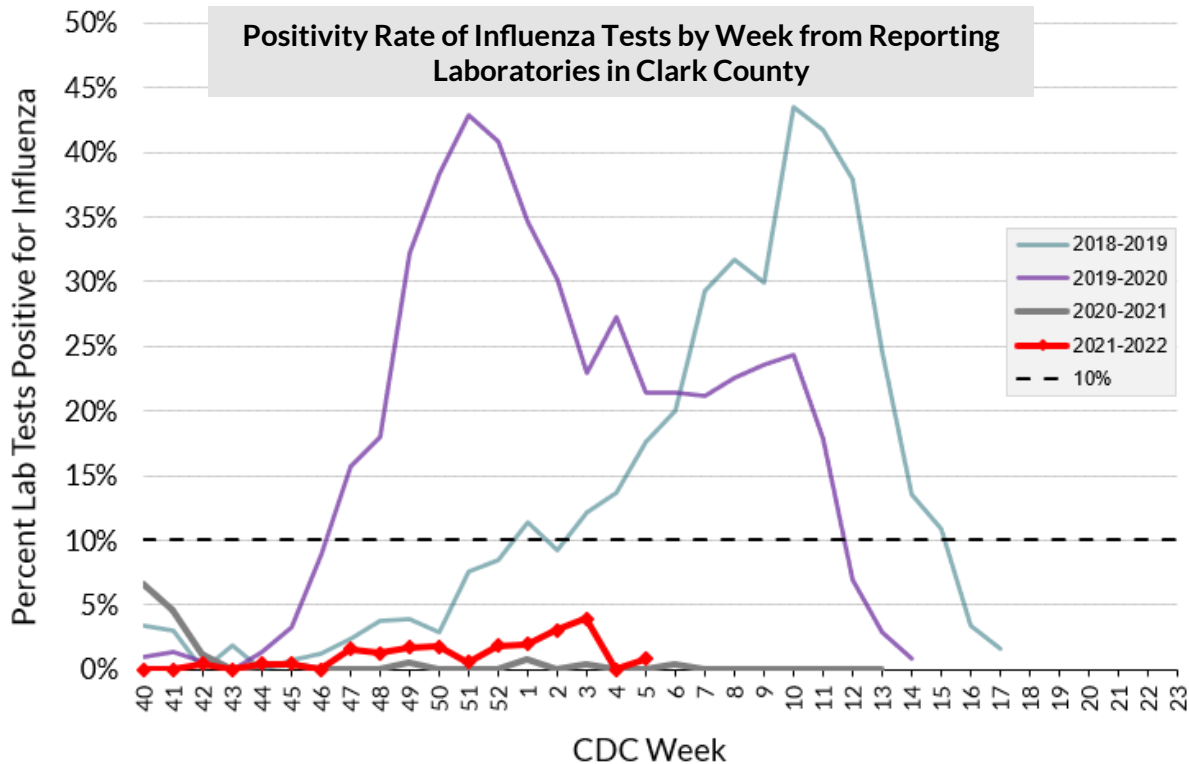
- Clark County partner labs reported influenza positivity at 1% in Week 5.
- The CDC reported national positivity in Week 5 was at 2.0%.
- In Week 5, Washington state influenza positivity was reported at 0%.



## Data from Reporting Laboratories

Clark County

The **influenza positivity rate** is the percent of influenza tests conducted by reporting laboratories that result positive. Traditionally, agencies including the CDC and WA State DOH use positivity  $\geq 10\%$  to define active influenza season.



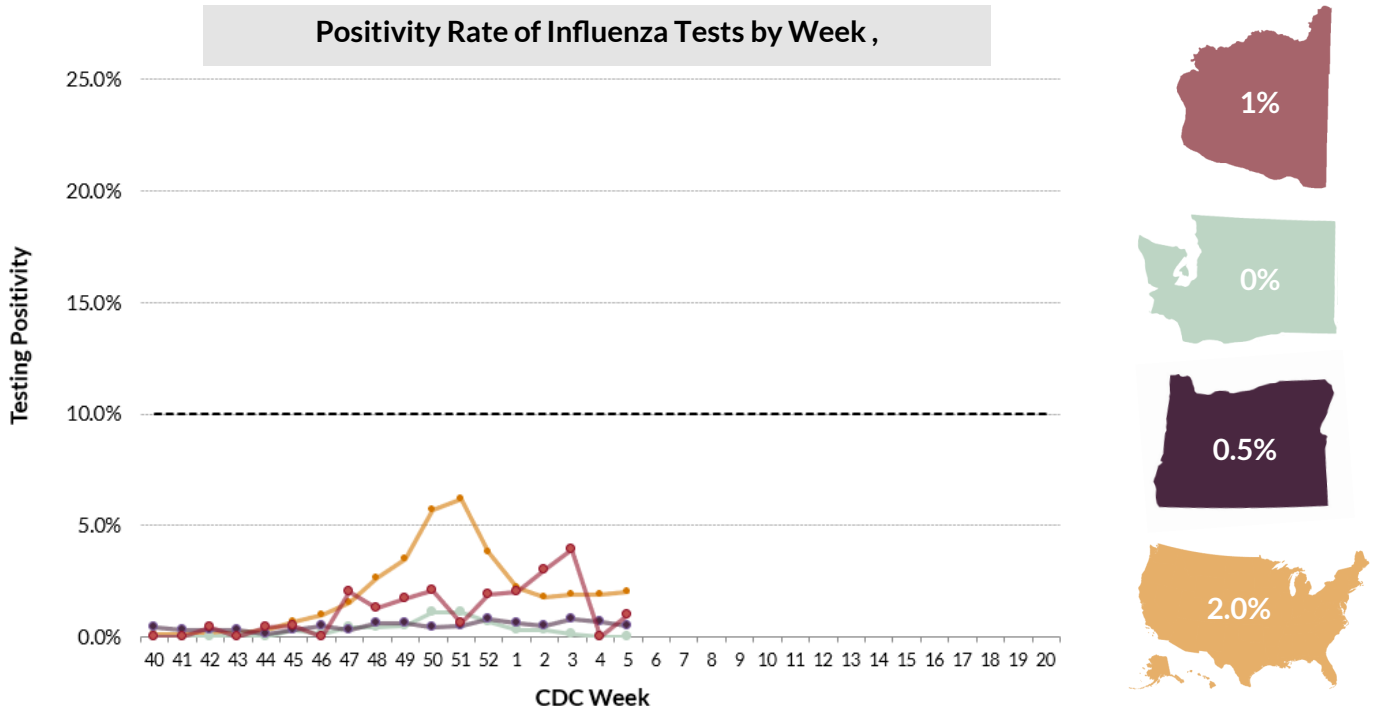
CDC Week	Date Range	A (H1)	A (H1N1)	A (H3)	A (not sub-typed)	Type B	Not Typed	Total influenza	No. Tested	Positivity
3	1/16–1/22	0	0	0	1	0	16	17	434	3.9%
4	1/23–1/29	0	0	0	0	0	0	0	69	0%
5	1/30–2/5	0	0	0	0	0	2	2	241	1%



# Data from Reporting Laboratories

Washington State, Oregon, CDC

The CDC, Washington State, and Oregon also collect and report influenza activity data on a weekly basis. This allows for comparisons to be made with regional and national trends as the season progresses. In Week 5 the CDC reported national positivity of 2.0%. Washington and Oregon both reported positivities of 0% and 0.5%, respectively. Clark County's positivity was at 1%, all below the 10% positivity threshold.



# Influenza Outbreaks in Long Term Care Facilities

Clark County

Clark County Public Health identifies and responds to influenza outbreaks in long term care facilities around Clark County, in order to provide recommendations and guide further community action. So far this influenza season, **zero lab-confirmed influenza outbreaks have been reported.**

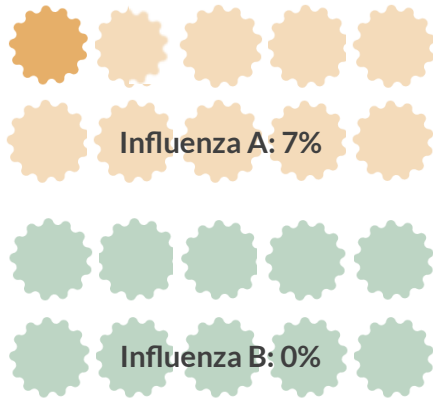


# Circulating Strains from Reporting Laboratories

Local, State, and National Data

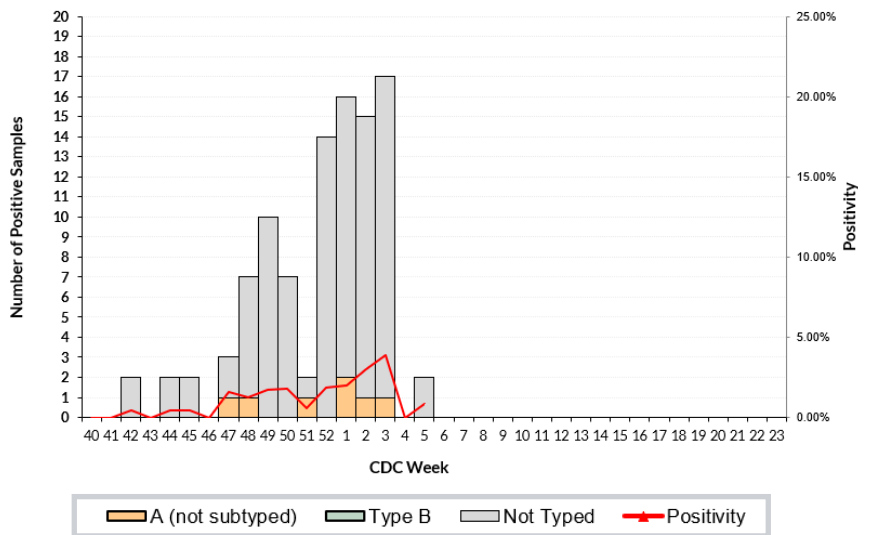
Reporting laboratories also may provide details on what **strains of influenza** are reported positive. The colored bars represent how much of each strain of influenza is being reported, while the black line is the corresponding influenza positivity. The below summaries display the breakdown of influenza strains identified in positive results at the local, state, and national level, by CDC week. **Through Week 5, all typed results were influenza A.**

## Clark County Total Season Strain Distribution, 2021-2022

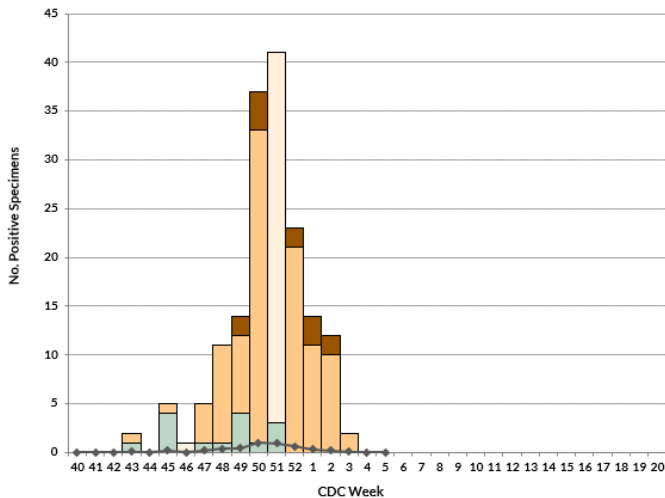


Not Typed: 93%

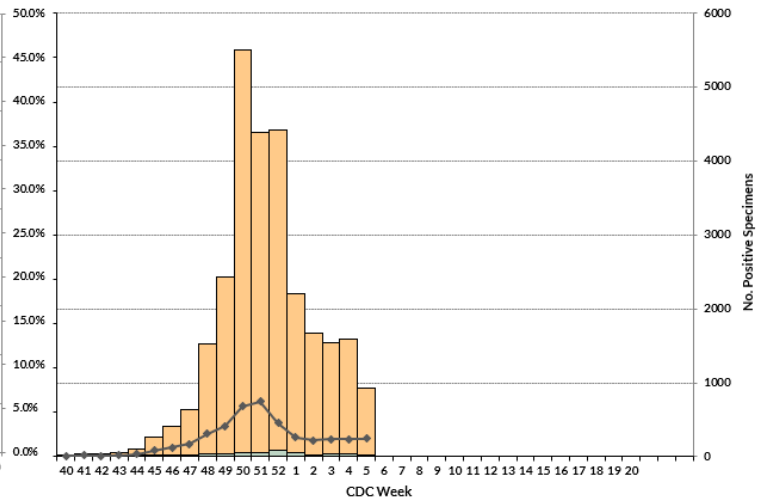
## Number of Positive Influenza Tests from Reporting Laboratories in Clark County, by Week



## Number of Positive Influenza Tests by Week from Reporting Laboratories in Washington State



## Number of Positive Influenza Tests by Week from U.S. Clinical Laboratories, Nationwide



Legend: A (unable to subtype), A(H1N1), A(H3N2), A(2009 H1N1), A (subtyping not done), B, % Positive



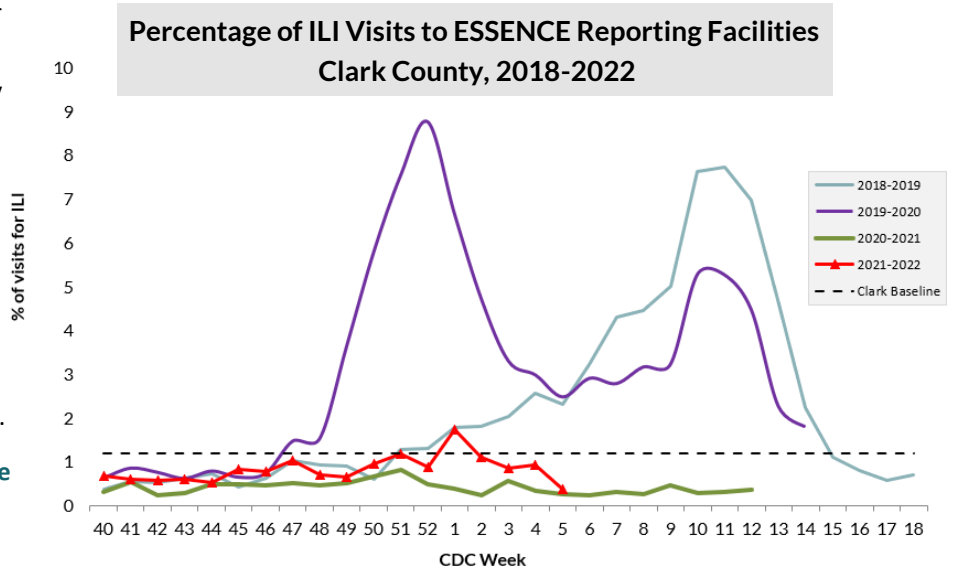
# ESSENCE Syndromic Surveillance for Influenza-Like Illness (ILI)

## Clark County

CCPH assesses **syndromic surveillance data on influenza-like illness (ILI)**, in order to view community influenza activity in another way. These data are automatically reported by local hospitals to the CDC's ESSENCE system, and reflect the proportion of individuals seen with ILI symptoms.

The **ILI baseline of 1.1%** is defined as the mean percent of patient visit for ILI during non-influenza weeks during the previous two seasons, plus two standard deviations.

During Week 5, **Clark County ILI visits were at 0.4%**, below baseline levels.



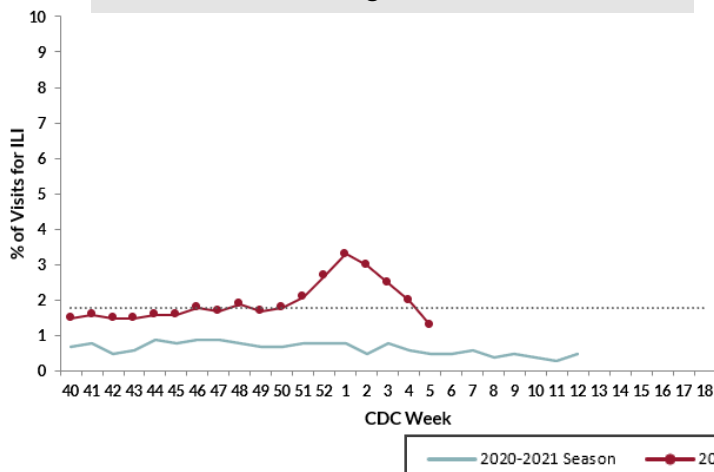
# Influenza-Like Illness (ILI) Visits Reported by Sentinel Providers

## State and National Level Data

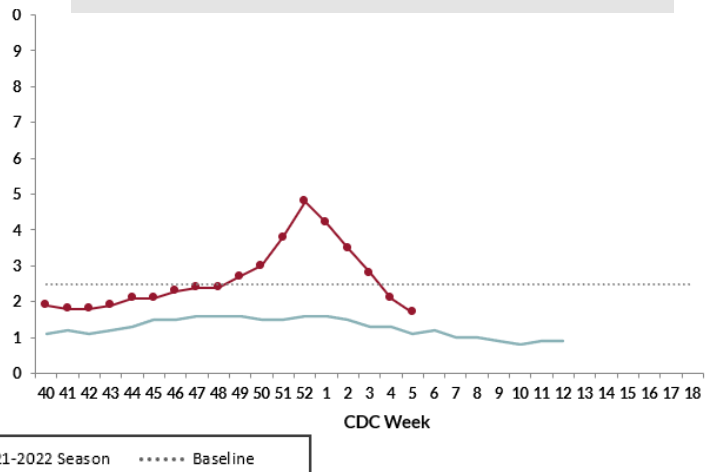
**Sentinel provider data** can also provide valuable information on the presence of influenza-like illness. These data are captured at the state and national level, and are defined as the percent of patient visits to a sentinel healthcare facility that meet the case definition for influenza-like illness (ILI). ILI is defined as fever  $\geq 100^\circ$  F AND cough and/or sore throat (in the absence of a known cause other than influenza).

During Week 5, **National ILI patient visits were at 1.7%**, below the CDC baseline for elevated ILI activity of 2.5%. Washington data from Week 5 indicated ILI visits at 1.3%, below the state threshold of 1.8%.

Percentage of ILI Visits Reported by Sentinel Providers, Washington State, 2020-2022



Percentage of ILI Visits Reported by Sentinel Providers, Nationally, 2020-2022





# Clark County Public Health Influenza Resources

## Information for Schools and Child Day Cares:

<https://www.clark.wa.gov/public-health/schools-child-day-cares>

## Clark County Public Health—Resources for Healthcare Providers:

<https://www.clark.wa.gov/public-health/long-term-care-facilities>

- ⇒ COVID-19 and Influenza Recommendations for Skilled Nursing Facilities and Assisted Living Facilities
- ⇒ Influenza Outbreak Preparation and Management Quick Guide
- ⇒ Influenza Outbreaks in LTCFs: Frequently Asked Questions
- ⇒ Tamiflu Standing Order Template
- ⇒ Sample Line List Document
- ⇒ Inter-Facility Transfer Form



## State and National Influenza Resources

National influenza surveillance data are available at:

<http://www.cdc.gov/flu/weekly/>

Washington influenza surveillance data are available at:

<http://www.doh.wa.gov/Portals/1/Documents/5100/420-100-FluUpdate.pdf>

Oregon influenza surveillance data available at:

<http://public.health.oregon.gov/DiseasesConditions/CommunicableDisease/DiseaseSurveillanceData/Influenza/Pages/surveil.aspx>

Recommendations of the Advisory Committee on Immunization Practices, United States, 2021-2022 Influenza Season:

<https://www.cdc.gov/mmwr/volumes/70/rr/rr7005a1.htm>

Seasonal influenza news from the World Health Organization (WHO):

[https://www.who.int/health-topics/influenza-seasonal#tab=tab\\_1](https://www.who.int/health-topics/influenza-seasonal#tab=tab_1)



## Contact Information

### **Alyssa Carlson, MPH**

Epidemiologist

Clark County Public Health

Phone: 564-397-8020

[alyssa.carlson@clark.wa.gov](mailto:alyssa.carlson@clark.wa.gov)

### **Mariah Crawford, MPH**

Epidemiologist

Clark County Public Health

Phone: 564-397-8020

[mariah.crawford@clark.wa.gov](mailto:mariah.crawford@clark.wa.gov)

### **Melodie Bianchini, MPH**

Epidemiologist

Clark County Public Health

Phone: 564-397-8082

[melodie.bianchini@clark.wa.gov](mailto:melodie.bianchini@clark.wa.gov)