

Freight Rail-Dependent Uses Overlay Overview

Clark County Council Work Session
WebEx Remote Meeting
May 17, 2023

Oliver Orjiako and Jose Alvarez, Community Planning



Agenda

- Follow up to March 1, 2023 Work Session
- Land Use along railroad
- Options
- Next steps



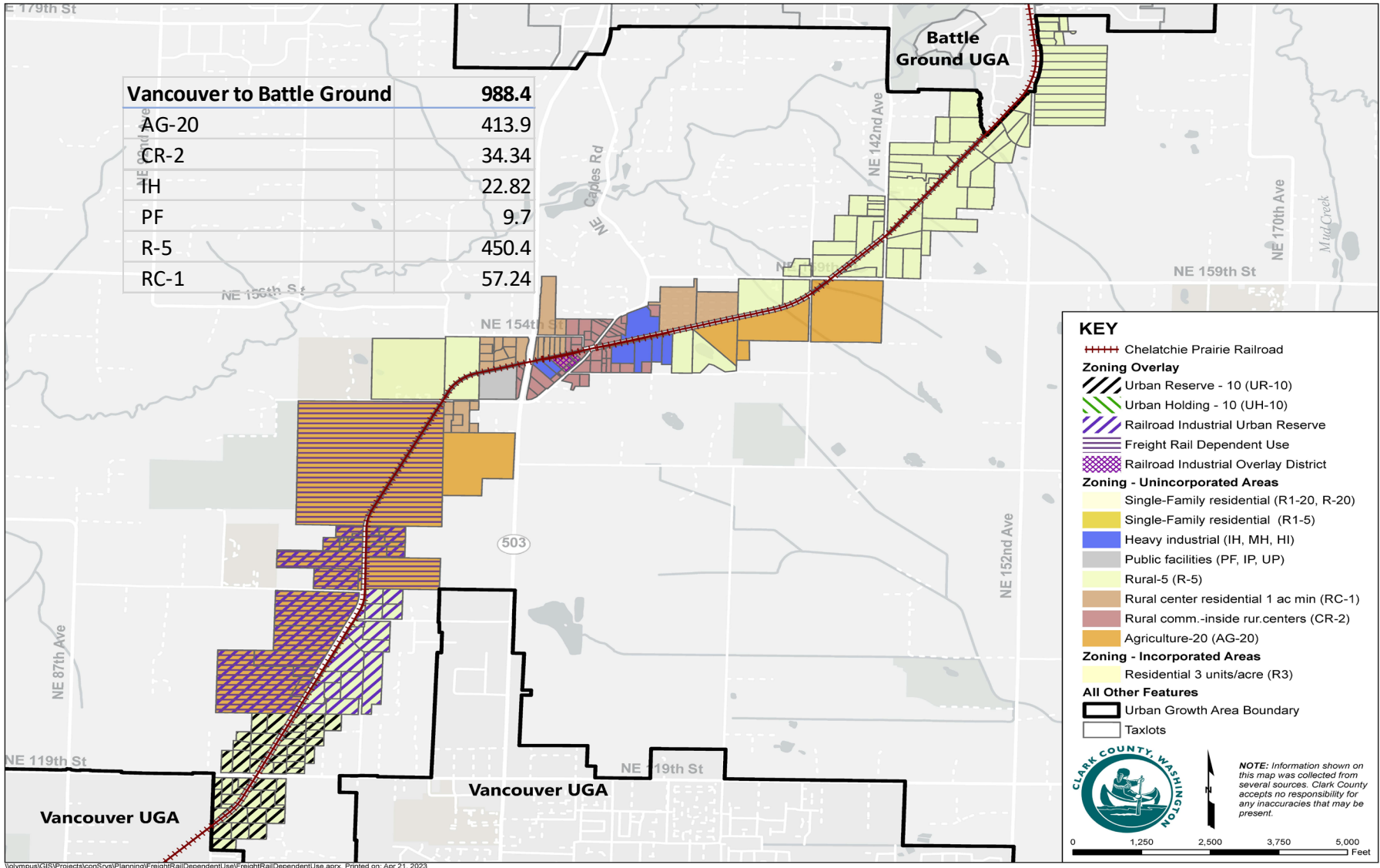
Follow up to March 1, 2023 Work Session

- Draft Development Use List and Development Standards - Provided to Council on March 7, 2023
- Legal Analysis for extension of sewer
- Economic Viability Assessment – Cost and availability issues



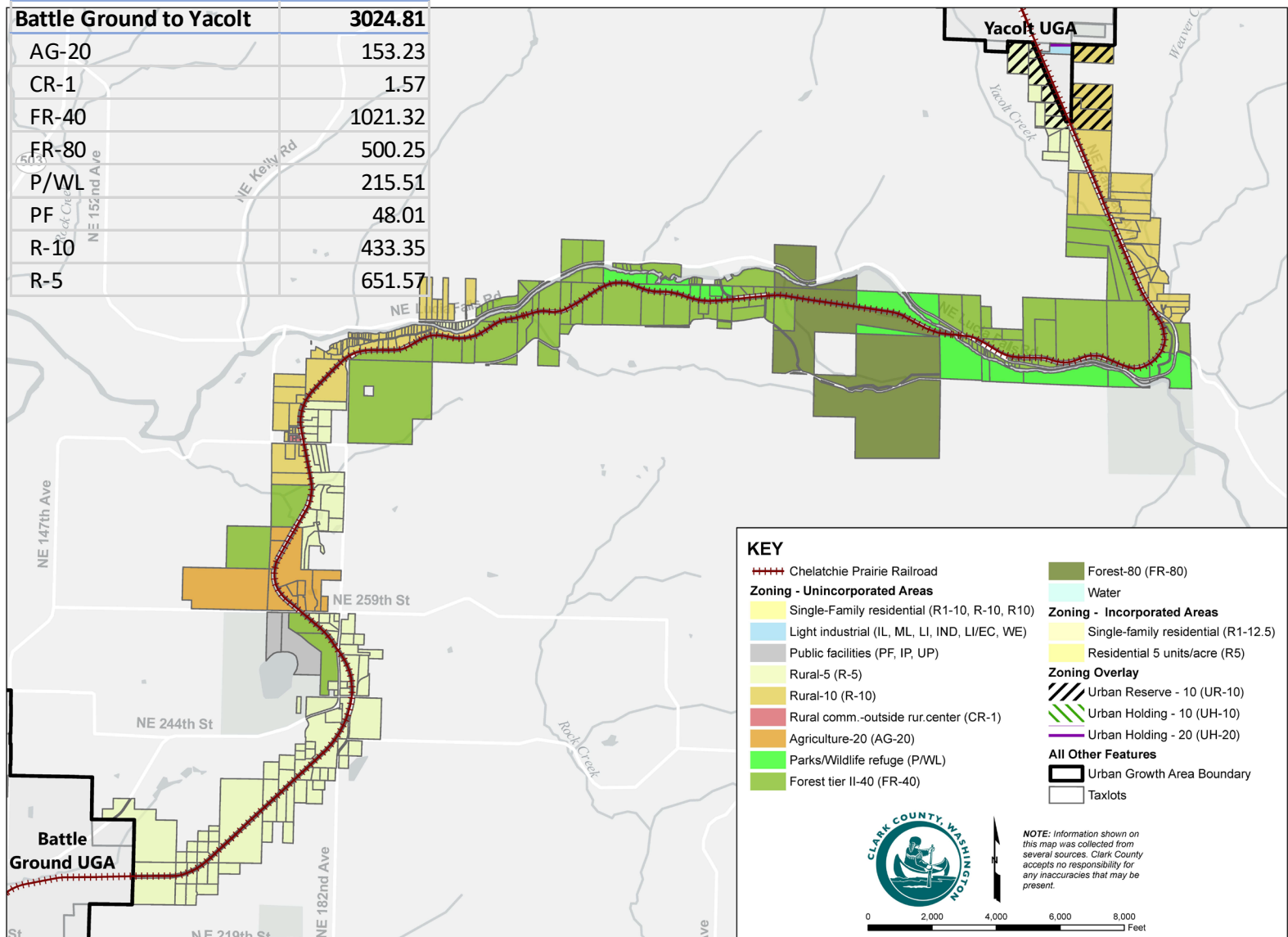
Chelatchie RR: Vancouver to Battle Ground

Chelatchie Prairie Railroad: Vancouver to Battle Ground



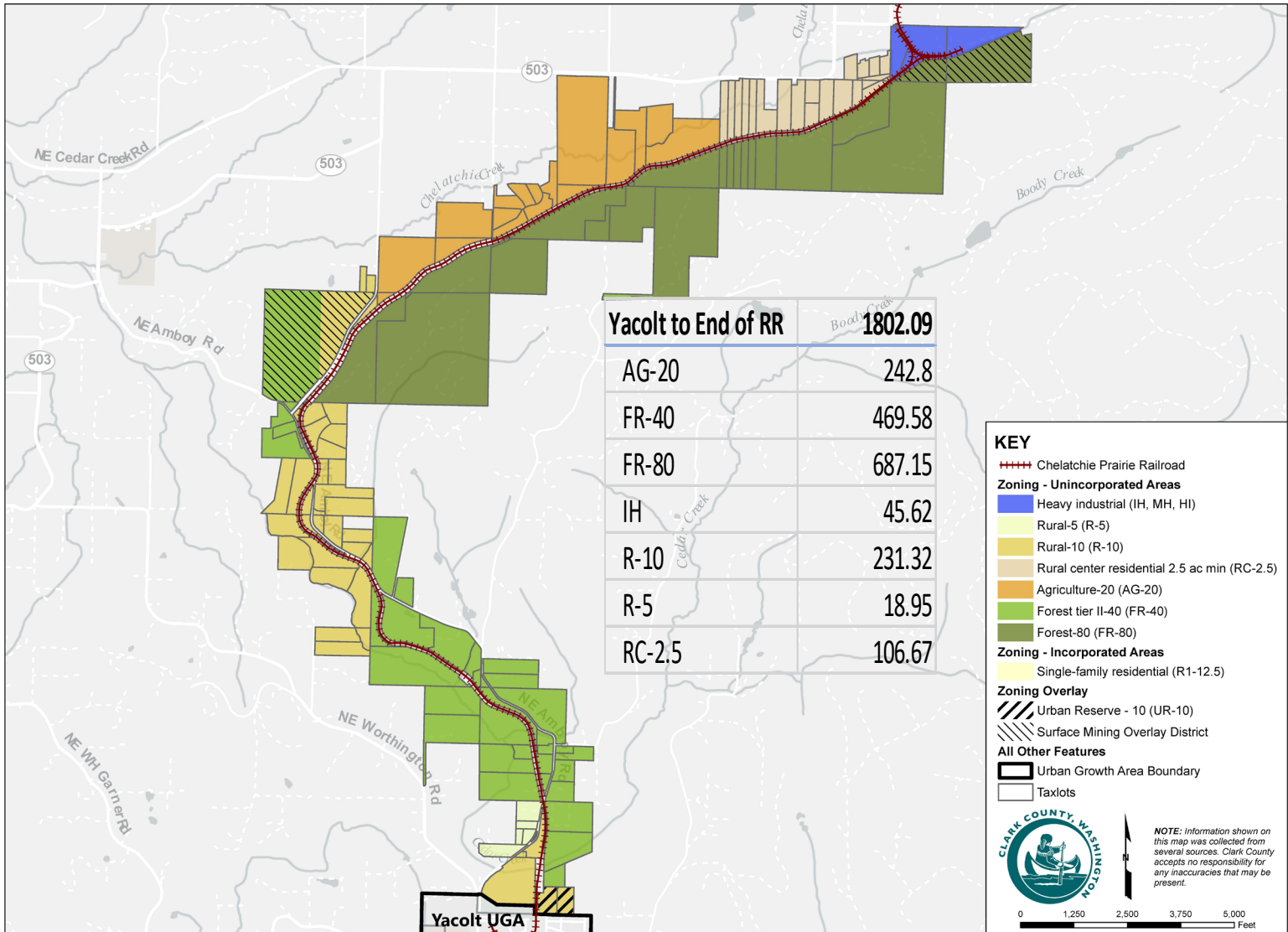
Chelatchie RR: Battle Ground to Yacolt

Chelatchie Prairie Railroad: Battle Ground to Yacolt



Chelatchie RR: Yacolt to Chelatchie Terminus

Chelatchie Prairie Railroad: Vancouver to Battle Ground



Options

Option

Option 1: Not implementing 3ESB5517

Option 2: Development regulations (without heavy industrial), Jan. 9 overlay, no sewer

Option 3: Development regulations (with heavy industrial), Jan. 9 overlay, no sewer

Option 4: Development regulations (without heavy industrial), Jan. 9 overlay, sewer allowed

Option 5: Development regulations (without heavy industrial), amend Jan. 9 overlay map to reflect 2015 RILB SEPA, allow sewer

Option 6: Committee recommendation



Next steps

- Process/Potential Scope of Work
 - Professional Services
 - Task Force/Railroad Advisory Board
 - SEPA
 - Public participation
 - Planning Commission work sessions and public hearings
 - Council work sessions and public hearings
 - Potential appeal of county decision
- Council Direction



Thank you!

Additional Information can be found:

<https://clark.wa.gov/community-planning/freight-rail-dependent-uses>

<https://clark.wa.gov/community-planning/freight-rail-dependent-use-advisory-committee-meetings?year=2018>

