

**PUBLIC HEARING  
PACKET**

**ELECTION PRECINCT  
BOUNDARY CHANGES**

Notice of Public Hearing

Staff Report

Voting Precinct Legal Boundary Descriptions (Exhibit A)

Precincts by County Council District (Exhibit B)

Spreadsheet of Precinct Changes (Exhibit C)

Large and small maps showing changes as drawn (Exhibit D)

Ordinance to amend Clark County Code, Section 2.12.020

## NOTICE OF PUBLIC HEARING

The Board of County Councilors will hold a public hearing at **10 a.m. on Tuesday, November 28, 2023** to consider:

Precinct Additions and Precinct Boundary Adjustments to Reflect  
City Annexations and Precinct Voter Size

Council meetings will be held in a hybrid format and the public is encouraged to participate in the following ways:

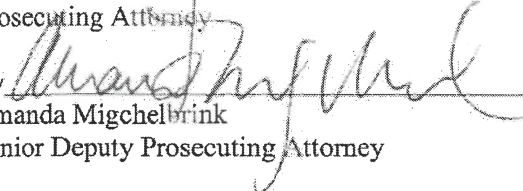
- In person attendance in the Council's Hearing Room, 6th Floor, Public Service Center, 1300 Franklin Street, Vancouver, WA 98666
- Virtually via WebEx (join by phone or computer): information for the meetings will be posted on the Meeting Agendas & Archives page one week prior to the meeting: <https://clark.wa.gov/councilors/clark-county-council-meetings>
- Watch the meeting live on CVTV (Comcast channel 23)
- Livestream from a personal computer at [www.cvtv.org](http://www.cvtv.org)
- Submit written comments via the County website at <https://www.clark.wa.gov/councilors/public-comment>
- Read your comments into the record. Instructions are available on the County website at <https://clark.wa.gov/councilors/clark-county-council-meetings>. They can be found at the top of the meeting page, as well as in the related document portion of that meeting entry.

More information concerning this matter may be obtained by contacting Cathie Garber at Clark County Elections, 1408 Franklin Street, Vancouver, Washington, telephone (564) 397-2345.

BOARD OF COUNTY COUNCILORS

  
Clerk of the Board

Approved as to Form Only  
ANTHONY F. GOLIK  
Prosecuting Attorney

By   
Amanda Migchelbrink  
Senior Deputy Prosecuting Attorney

PLEASE PUBLISH: November 10, 2023

# CLARK COUNTY STAFF REPORT

**DEPARTMENT:** County Auditor's Office, Elections Division

**DATE:** November 28, 2023

**REQUESTED ACTION:** Approval of Precinct Boundary Changes by Ordinance

\_\_\_ Consent     X  Hearing    \_\_\_ County Manager

---

## BACKGROUND

RCW 29A.16.040 requires limiting election precinct sizes to be no more than 1,500 active registered voters. In Clark County, there are two precincts that are approaching or over the 1,500 limitation. One new precinct will be added, and three existing precincts will be adjusted to bring precincts into compliance with this law.

RCW 29A.16.050 requires that every voting precinct be completely within a single congressional district, a single legislative district, a single district of a county legislative authority, and if applicable, a city. Annexations were made in the City of Camas, City of Ridgefield, City of Vancouver, City of Washougal and the Town of Yacolt. Adding two new precincts and adjusting eight existing precinct boundaries will bring precincts into compliance with this law.

We ask that the Clark County Board of County Councilors amend Clark County Code Section 2.12.020 to authorize the county Auditor to implement precinct boundary changes as required to bring the precincts into compliance with the applicable statutes.

Attached is "Exhibit A" as the new legal description for Clark County election precinct boundary lines; "Exhibit B", a list of precincts by county councilor district; "Exhibit C", a list of precinct changes to be made; and "Exhibit D", a county map drawn and showing all 2024 proposed precinct boundary changes.

## COUNCIL POLICY IMPLICATIONS

This action will require a change to county code to add the new precincts and alter existing boundaries.

## ADMINISTRATIVE POLICY IMPLICATIONS

This action renews an existing policy of Clark County Code 2.12, Section 020.

## COMMUNITY OUTREACH

Notice of public hearing was published in a newspaper of record not less than 10 days before the hearing.

Once the precinct boundary changes are approved and completed by the Auditor's Office, notification of the changes will be sent to the affected voters of Clark County. These changes will affect about 750 voters who will receive notification of the change.

**BUDGET IMPLICATIONS**

This action falls within existing budget capacity and no additional funding will be required in order to administer these changes and notify the voters of the changes.

**DISTRIBUTION:**

Board staff will post all staff reports to The Grid at <http://www.clark.wa.gov/thegrid/>

---



Cathie Garber  
Elections Manager

Primary Staff Contact: Cathie Garber      Ext. 5179

**APPROVED:** \_\_\_\_\_  
**CLARK COUNTY, WASHINGTON**  
**BOARD OF COUNTY COUNCILORS**

DATE: \_\_\_\_\_

SR# \_\_\_\_\_

**APPROVED:** \_\_\_\_\_  
**Kathleen Otto, County Manager**

DATE: \_\_\_\_\_

**EXHIBIT A**

**CLARK COUNTY,  
WASHINGTON**

**VOTING PRECINCT  
BOUNDARY DESCRIPTIONS**

**EFFECTIVE NOV 28, 2023**

PRECINCT	NORTH	EAST	SOUTH	WEST
100	W. 33rd Way Ext. Lincoln Avenue W. 33rd Street	Daniels Street	W. 4th Plain Blvd.	Burlington Northern RR
101	W. 37th Street E. 37th Street	Main Street	W. 4th Plain Blvd	Daniels Street
102	Vancouver City Limits (Burlington Northern R.R.)	Vancouver City Limits	N.W. 46th Street Ext.	N.W. Lincoln Avenue N.W. Lincoln Avenue Ext.
104	Vancouver City Limits	N.W. Lincoln Avenue Ext. N.W. Lincoln Avenue	N.W. 49th Street Ext.	Burlington Northern R.R. Vancouver City Limits
106	N.W. 49th Street Ext.	N.W. Lincoln Avenue N.W. 44th Street Birch Street N.W. 43rd Street Maple Street Pine Street Fir Street W. 41st Street Kauffman Avenue W. 39th Street Daniels Street	W. 33th Street N.W. Lincoln Avenue W. 33rd Street Ext.	Burlington Northern R.R.
108	N.W. 46th Street Ext. Vancouver City Limits (Washington Street) Vancouver City Limits (N.W. 45th Street) Vancouver City Limits (Newhouse Road)	Main Street	E. 37th Street W. 37th Street Daniels Street W. 39th Street	Kauffman Avenue W. 41st Street Fir Street Pine Street Maple Street N.W. 43rd Street Birch Street N.W. 44th Street N.W. Lincoln Avenue
109	W. 4th Plain Blvd.	Main Street	W. 16th Street	Franklin Street
110	W. 4th Plain Blvd.	Franklin Street	Mill Plain Blvd.	Burlington Northern R.R.
112	N.W. 219th Street Ext.	Burlington Northern R.R.	Vancouver City Limits	Columbia River (Clark County Boundary Line)
113	Vancouver City Limits	Burlington Northern R.R.	Columbia River (Vancouver City Limits) (Clark County Boundary Line)	Vancouver City Limits (Columbia River) (Clark County Boundary Line)
120	Mill Plain Blvd. Franklin Street W. 16th Street	Columbia Street Interstate Hwy. 5	Columbia River (Vancouver City Limits) (Clark County Boundary Line)	Burlington Northern R.R.
125	W. 16th Street Main Street E. 20th Street	Interstate Hwy. 5	Columbia River	Columbia Street
130	E. 33rd Street	Interstate Hwy. 5	E. 20th Street	Main Street
135	Interstate Hwy. 5	Interstate Hwy. 5	E. 33rd Street	Main Street
147	Vancouver City Limits N.E. Highway 99 (Main Street) N.E. Ross Street N.E. North Street N.E. 15th Avenue N.E. 49th Street	Vancouver City Limits	State Road 500 N.E. 39th Street	Interstate Hwy. 5
150	E. 39th Street	S Street E. 33rd Street R Street	N.E. St. John's Blvd. E. 4th Plain Blvd.	Interstate Hwy. 5

PRECINCT                      NORTH                                      EAST                                      SOUTH                                      WEST

153	Vancouver City Limits	Vancouver City Limits (N.E. St. John's Road)	N.E. 49th Street	N.E. 15th Avenue Ext. N.E. North Street N.E. Ross Street N.E. Highway 99
160	SR 500	Saint Johns Blvd	Saint Johns Blvd	R Street E. 33rd Street S Street E. 39th Street
161	SR 500	Drummond Avenue Ext. Drummond Avenue	E. 29th Street E. Grand Blvd. E. 27th Street Fort Vancouver Way E. Fourth Plain Blvd.	St. Johns Blvd.
170	E. 27th Street E. Grand Blvd. E. 29th Street Ext.	Burnt Bridge Creek	E. 4th Plain Blvd.	Fort Vancouver Way
171	Fourth Plain Blvd.	Fairmount Avenue E. 19th Street E. Grand Blvd.	E. 13th Street	X Street E. 16th Street E. Reserve Street
173	E. Mill Plain Blvd. Grand Blvd. E. 13th Street E. McLoughlin Blvd. E. 14th Street	Brandt Road E. 13th Street E. 40th Avenue East of Parcel #37245000 E. Mill Plain Blvd. 3700 E. Mill Plain Blvd. S.E. to corner of 43rd Avenue Ext. @ Lewis Avenue Ext. 8th Street Ext. E. Evergreen Blvd.	E. Evergreen Blvd.	V Street
175	Vancouver City Limits (State Road 500)	N.E. 57th Avenue Ext.	E. Fourth Plain Blvd.	Falk Road
177	Vancouver City Limits (State Road 500)	Falk Road	E. Fourth Plain Blvd. Burnt Bridge Creek E. 29th Street Ext.	Drummond Avenue Ext.
180	E. 4th Plain Blvd.	General Anderson Avenue	E. 18th Street E. 19th Street Ext.	Fairmount Avenue
185	E. 4th Plain Blvd. Wintler Drive General Anderson Avenue E. Fourth Plain Blvd. N.E. 57th Avenue Ext. Vancouver City Limits N.E. 64th Avenue Ext. SR 500	N.E. 72nd Avenue Ext. E. Fourth Plain Blvd. N.E. Andresen Road	E. 18th Street N.E. 65th Avenue Ext. BPA Power Lines N. Devine Road Around parcel # 29467000 N. Devine Road E. 18th Street	General Anderson Avenue
190	Interstate Hwy. 5 E. Fourth Plain Blvd.	E. Reserve Street E. 16th Street X Street E. 13th Street Grand Blvd. E. Mill Plain Blvd. V Street	E. Evergreen Blvd.	Interstate Hwy. 5
195	E. Evergreen Blvd.	Grand Blvd.	Columbia River (Vancouver City Limits) (Clark County Boundary Line)	Interstate Hwy. 5
200	E. Evergreen Blvd.	E. Evergreen Blvd. 53rd Avenue Ext.	Columbia River (Vancouver City Limits) (Clark County Boundary Line)	Kaiser Avenue Ext. Grand Blvd. Ext. Grand Blvd.

PRECINCT	NORTH	EAST	SOUTH	WEST
220	E. 19th Street Ext. E. 18th Street	N. Devine Road	Idaho Street Boise Street E. 15th Street Brandt Road E. 14th Street E. McLoughlin Blvd. E. 13th Street	Grand Blvd.
225	E. 15th Street Boise Street Idaho Street N. Devine Road BPA Power Lines	N. Andresen Road E. Mill Plain Blvd. N. Devine Road	E. Evergreen Blvd. 8th Street Ext. Corner of 43rd Street Ext. @ Lewis Ave Ext. to 3700 E. Mill Plain Blvd.	E. Mill Plain Blvd. N.E. 40th Avenue Ext. E. 13th Street Brandt Road
240	MacArthur Boulevard N. Burdick Avenue S. Burdick Avenue Highland Drive	S. Andresen Road SR 14 S.E. Evergreen Highway S.E. 74th Avenue Ext.	Columbia River (Vancouver City Limits) (Clark County Boundary Line)	Columbia View Drive Ext. E. Evergreen Boulevard S. Devine Road Ext. N. Devine Road
245	Corregidor Road Memphis Way Mississippi Drive Little Rock Way Louisiana Drive Mobile Way Alabama Drive S. Morrison Road Macarthur Blvd. St. Helens Avenue	Columbia Ridge Drive S.E. 88th Avenue S.D. #37 / S.D. # 114 Boundary Line (S.E. 88th Avenue Ext.)	Columbia River (Vancouver City Limits) (Clark County Boundary Line)	S.E. 74th Avenue Ext. S.E. Evergreen Highway State Road 14 S.E. Andresen Road S. Andresen Road
250	S.D. #37 / S. D. #114 Boundary Line (E. Mill Plain Blvd.)	S.D. #37 / S. D. #114 Boundary Line	St. Helens Avenue Macarther Blvd.	S. Morrison Road S. Garrison Road N. Garrison Road
255	E. 18th Street Ext.	N. Garrison Road Ext. S. Garrison Road S. Morrison Road	Alabama Drive Mobile Way Louisiana Drive Little Rock Way Mississippi Drive Memphis Way Corregidor Road S. Andresen Rd Highland Drive S. Burdick Avenue N. Burdick Avenue MacArthur Boulevard	N. Devine Road E. Mill Plain Boulevard N. Andresen Road BPA Power Line N.E. 65th Avenue Ext.
257	N.E. 25th Street N.E. Burton Road	N.E. Bridgecreek Ave. N.E. 20th St N.E. 87th Ave.	N.E. 15th Street N.E. 15th Street Ext. S.D. #114 Boundary Line N. Garrison Road Ext. N.E. 18th Street Ext.	N.E. 65th Avenue E. 18th Street N.E. Andresen Road
258	N.E. Burton Road	S.D. #114 Boundary Line	N.E. 15th Street	N.E. 87th Avenue NE. 20th St. N.E. Bridgecreek Ave.
260	SR 500	N.E. Thurston Way N.E. Fourth Plain Boulevard N.E. 86th Avenue	N.E. Burton Road N.E. 25th St.	N.E. Andresen Road N.E. Fourth Plain Boulevard N.E. 72nd Avenue
290	SR 500	S.D. #114 Boundary Line N.E. 97th Avenue S.D. #114 Boundary Line	N.E. Burton Road	N.E. 86th Avenue N.E. Fourth Plain Boulevard N.E. Thurston Way
294	N.E. 51st Circle Vancouver City Limits N.E. Andresen Road N.E. Vancouver Mall Drive	N.E. 72nd Avenue N.E. 40th Street N.E. Andresen	SR 500	N.E. 64th Avenue Ext. Vancouver City Limits
295	N.E. Vancouver Mall Drive	N.E. 77th Avenue	SR 500	N.E. Andresen Road N.E. 40th Street N.E. 72nd Avenue
296	N.E. 51st Street N.E. 82nd Avenue N.E. 54th Street	S.D. #37 / S.D. # 114 Boundary Line	SR 500	N.E. 77th Avenue Ext. N.E. 77th Avenue N.E. Vancouver Mall Drive N.E. 72nd Avenue
298	N.E. 58th Street	S.D. #114 Boundary Line N.E. 92nd Court	N.E. 54th Street N.E. 82nd Avenue N.E. 51st Street	Vancouver City Limits



PRECINCT	NORTH	EAST	SOUTH	WEST
320	N.E. 58th Street N.E. 102nd Avenue	N.E. Covington Road	Vancouver City Limits	Interstate 5 Vancouver City Limits
325	N.E. 63rd Street	N.E. 87th Avenue	N.E. 58th Street N.E. 82nd Avenue Vancouver City Limits N.E. 51st Street	N.E. 78th Avenue N.E. 56th Street N.E. 76th Avenue N.E. 58th Street N.E. 72nd Avenue
327	S.D. #37 / S.D. # 119 Boundary Line S.D. #37 / S.D. # 114 Boundary Line (N.E. 72nd Avenue) (N.E. 78th Street)	S.D. #37 / S.D. # 114 Boundary Line	N.E. 63rd Street	N.E. Andresen Road Vancouver City Limits
328	N.E. 70th Street	N.E. Andresen Road	NE. 63rd Street	N.E. 58th Avenue
330	Vancouver City Limits	Vancouver City Limits N.E. 78th Street N.E. 58th Avenue	N.E. Minnehaha Street	N.E. 47th Avenue N.E. 78th Street N.E. 52nd Court N.E. 52nd Court ext.
331	N.E. 78th Street	Vancouver City Limits N.E. Andresen Road	N.E. 70th Street	N.E. 58th Avenue
335	N.E. 63rd Street	N.E. 72nd Avenue N.E. 58th Street N.E. 76th Avenue N.E. 56th Street N.E. 78th Avenue	N.E. 51st Street N.E. 72nd Avenue N.E. Vancouver Mall Drive	N.E. Andresen Road
336	N.E. 63rd Street	N.E. Andresen Road	Vancouver City Limits N.E. 51st Circle Vancouver City Limits N.E. 66th Avenue N.E. 52nd Street N.E. 64th Avenue N.E. 54th Street	N.E. 62nd Avenue N.E. 58th Street N.E. 59th Avenue N.E. 58th Avenue
337	N.E. 51st Street N.E. 56th Avenue N.E. 54th Street N.E. 64th Avenue N.E. 52nd Street	N.E. 66th Avenue Vancouver City Limits	N.E. 40th Street N.E. 54th Avenue N.E. 44th Street	N.E. 50th Avenue
338	N.E. 54th Street N.E. 38th Avenue N.E. 55th Street N.E. 40th Avenue N.E. 56th Street N.E. 45th Avenue N.E. 58th Street	N.E. 62nd Avenue N.E. 54th Street N.E. 56th Avenue N.E. 58th Avenue N.E. 59th Avenue N.E. 58th Street	N.E. 51st Street N.E. 40th Avenue N.E. 52nd Street	Vancouver City Limits
339	N.E. 60th Street N.E. 50th Avenue N.E. Minnehaha Street	N.E. 58th Avenue N.E. 59th Avenue	N.E. 58th Street	N.E. 45th Avenue
340	N.E. 44th Street N.E. 54th Avenue N.E. 40th Street	Vancouver City Limits	Vancouver City Limits	Vancouver City Limits (N.E. St. John's Blvd.)
350	N.E. 52nd Street N.E. 40th Avenue N.E. 51st Street	N.E. 50th Avenue	N.E. 44th Street	Vancouver City Limits

PRECINCT	NORTH	EAST	SOUTH	WEST
360	N.E. 78th Street	N.E. 47th Avenue NE Minnehaha St NE 50th Ave Ext NE 50th Ave	N.E. 60th Street N.E. 45th Avenue N.E. 56th Street N.E. 40th Avenue N.E. 55th Street N.E. 38th Avenue N.E. 54th Street	Vancouver City Limits N.E. Saint Johns Road Vancouver City Limits N.E. Saint Johns Road
365	N.E. 88th Street S.D. #37 /119 Boundary Line	N.E. 45th Avenue N.E. Saint Johns Road S.D. #37 Boundary Line 18/49 Legislative Boundary - 2022	N.E. 78th Street	Fire District 5/6 Boundary line - 2022
370	N.E. 99th Street N.E. 15th Avenue N.E. 88th Street	N.E. 25th Avenue	N.E. 78th Street	Interstate Hwy. 5
371	N.E. 88th Street	N.E. 29th Court Fire 5/6 Boundary Line	N.E. 78th Street	N.E. 25th Avenue
390	N.E. 68th Street	Vancouver City Limits	Vancouver City Limits	N.E. Highway 99
391	N.E. 78th Street	N.E. 16th Avenue N.E. 72nd Street N.E. Highway 99	N.E. 68th Street Ext.	Interstate Highway 5
392	N.E. 72nd Street N.E. 16th Avenue N.E. 78th Street	N.E. 29th Avenue Ext. Vancouver City Limits	N.E. 68th Street	N.E. Highway 99
395	Burlington No. R.R.	Vancouver City Limits	Vancouver City Limits	Vancouver City Limits
400	N.W. 72nd Way Ext. N.W. Anderson Avenue N.W. 68th Street N.E. 68th Street Ext.	N.E. Highway 99	Vancouver City Limits (Burlington No. R.R.)	N.W. Mt. Lake Way Ext.
410	N.W. 78th Street NW Anderson Ave 74th St 3rd Ave 76th St 5th Ave 77th St 3rd Ave N.W. 78th Street N.E. 78th Street	Interstate Highway 5	NE 68th Street Ext. NE 68th Street NW 68th Street NW Anderson Avenue NW 72nd Street NW 72nd Street Ext N.W. Anderson Avenue NW Mt Lake Way Ext. City of Vancouver Limits 2022	Vancouver City Limits
415	N.W. 82nd Street N.W. Old Orchards Drive N.W. 83rd Street N.E. Hazel Dell Avenue N.E. 99th Street	Interstate Hwy. 5	N.E. 78th Street N.W. 78th Street NW 3rd Ave NW 77th St NW 5th Ave NW 76th St NW 3rd Ave NW 74th St NW Anderson Ave NW 78th Street	N.W. 9th Avenue
420	N.W. 99th Street	N.E. Hazel Dell Avenue	N.W. 83rd Street N.W. Old Orchards Drive N.W. 82nd Street	N.W. 9th Avenue
423	N.E. 94th Street	N.E. 30th Avenue	N.E. 88th Street	N.E. 15th Avenue
424	Salmon Creek Highway 99 N.E. Parkview Drive N.E. 113th Street N.E. 26th Avenue N.E. 114th Street N.E. 27th Avenue N.E. 114th Street N.E. 28th Avenue N.E. 114th Street N.E. 114th Street Ext.	N.E. 35th Avenue N.E. 113th Street N.E. Sherwood Drive N.E. 110th Street N.E. 33rd Avenue N.E. 108th Street N.E. 31st Avenue N.E. 107th Street N.E. 33rd Avenue	N.E. 106th Street N.E. 30th Avenue N.E. 109th Street N.E. 28th Avenue N.E. 104th Street Highway 99 N.E. 99th Street	Interstate Hwy. 5
425	N.E. 99th Street	S.D. #37 / S.D. #119 Boundary Line	N.E. 88th Street Ext.	N.E. 30th Avenue N.E. 94th Street N.E. 25th Avenue
426	N.E. 104th Street N.E. 28th Avenue N.E. 109th Street N.E. 30th Avenue	S.D. #37 / S.D. #119 Boundary Line (N.E. 39th Avenue) S.D. #37 / S.D. #119	N.E. 99th Street	N.E. 23rd Avenue

PRECINCT	NORTH	EAST	SOUTH	WEST
	N.E. 106th Street N.E. 33rd Avenue N.E. 107th Street N.E. 108th Street N.E. 32nd Avenue N.E. Sherwood Drive N.E. 113th Street N.E. 35th Avenue	Boundary Line		
427	N.E. 104th Street	N.E. 23rd Avenue N.E. 99th Street N.E. 25th Avenue	N.E. 94th Street	N.E. 15th Avenue N.E. Highway 99
430	N.E. 111th Street N.E. 5th Avenue N.E. 112th Street Ext.	Interstate Hwy. 5	N.E. 99th Street	N.E. Hazel Dell Avenue
432	N.W. 114th Street Ext. N.W. 114th Street N.E. 114th Street N.E. Hazel Dell Avenue N.E. 117th Street	Interstate Hwy. 5	N.E. 112th Street N.E. 5th Avenue N.E. 11th Street N.E. Hazel Dell Avenue N.E. 106th Street N.W. 106th Street	N.W. 4th Avenue N.W. 112th Street N.W. 5th Avenue N.W. 110th Way N.W. 7th Avenue N.W. 111th Street N.W. 111th Street Ext. Cougar Creek
434	N.E. 141st Street N.E. 33rd Avenue N.E. 142nd Street S.D. #37 / S.D. #119 Boundary Line (N.E. 35th Avenue) (N.E. Salmon Creek Avenue) S.D. #37 / S.D. #119 Boundary Line	S.D. #37 / S.D. #119 Boundary Line	Interstate Hwy. 205	N.E. 134th Street N.E. 29th Avenue
435	Interstate Hwy. 205	S.D. #37/S.D. #119 Boundary Line (N.E. 39th Avenue Ext.)	N.E. 114th Street Ext. N.E. 28th Avenue N.E. 114th Street N.E. 27th Avenue N.E. 26th Avenue N.E. 113th Street N.E. Parkview Drive Highway 99 Salmon Creek	Interstate Hwy. 5
436	N.E. 144th Street N.E. 144th Street Ext.	S.D. #37/S.D. #119 Boundary Line (N.E. 35th Avenue) N.E. 142nd Street N.E. 33rd Avenue N.E. 141st Street N.E. 29th Avenue	N.E. 134th Street	Interstate Hwy. 205 N.E. 139th Street N.E. 20th Avenue
440	N.W. 134th Street N.E. 134th Street N.E. 3rd Avenue N.E. 132nd Avenue N.E. 5th Avenue N.E. 134th Avenue N.E. 8th Avenue N.E. 132nd Street N.E. 11th Avenue N.E. 129th Street	Interstate Hwy. 5	Salmon Creek	N.W. 2nd Avenue Ext. N.W. 2nd Street

PRECINCT	NORTH	EAST	SOUTH	WEST
441	S.D. #37 / S.D. #122 Boundary Line	S.D. #37 / S.D. #122 Boundary Line S.D. #37 / S.D. #119 Boundary Line	N.E. 144th Street	N.E. 20th Avenue N.E. Union Road
442	S.D. #37 / S.D. #122 Boundary Line	N.E. Union Road N.E. 20th Avenue	N.E. 139th Street	Interstate Hwy. 5
443	N.W. 139th Street	N.W. 2nd Avenue N.W. 2nd Avenue Ext.	Salmon Creek	N.W. 11th Avenue Ext. N.W. 11th Avenue
444	N.E. 139th Street	N.E. 10th Avenue N.E. Clark Road N.E. 12th Avenue	N.E. 129th Street N.E. 11th Avenue N.E. 132nd Street N.E. 8th Avenue N.E. 134th Street N.E. 5th Avenue N.E. 132nd Street N.E. 3rd Avenue N.E. 134th Street	N.W. 2nd Avenue
445	N.W. 149th Street N.E. 149th Street Ext.	N.E. 10th Avenue	N.E. 139th Street N.W. 139th Street	N.W. 11th Avenue
446	S.D. #37 / S.D. #122 Boundary Line (N.W. 159th Street Ext.) S.D. #37 / S.D. #122 Boundary Line (N.E. 159th Street Ext.)	Interstate Hwy. 5	N.E. 134th Street N.E. 10th Avenue N.E. 146th Street N.E. 145th Street N.E. 4th Avenue N.W. 146th Street N.E. 2nd Avenue N.W. 149th Street	N.W. 11th Avenue
447	N.W. 142nd Street ext. N.W. 142nd Street	N.W. McCann Road N.W. Ashley Heights Drive N.W. 43rd Avenue N.W. McCann Road N.W. 39th Avenue	N.W. 131st Street N.W. 47th Avenue N.W. 127th Street N.W. 127th Street Ext.	Burlington Northern R.R.
448	Salmon Creek	Salmon Creek N.W. 16th Avenue Ext. N.W. 16th Avenue	N.W. 119th Street N.W. 26th Avenue N.W. 124th Street	N.W. 31st Avenue N.W. 127th Street N.W. 128th Street N.W. 36th Avenue
449	NW Bliss Road NW Hathaway Rd NW 139th Street	N.W. 11th Avenue N.W. 11th Avenue Ext.	Salmon Creek	Salmon Creek
450	N.W. 122nd Street	N.W. 36th Avenue N.W. Lakeshore Avenue	N.W. 100th Street Ext.	Burlington Northern R.R.
451	N.W. 114th Street Ext. N.W. 21st Avenue N.W. 119th Street N.W. 16th Avenue N.W. 114th Street N.W. 14th Avenue N.W. 115th Street N.W. 114th Street N.W. 114th Street Ext.	Cougar Creek	N.W. 104th Street Ext. N.W. 104th Street N.W. 14th Avenue N.W. 105th Street N.W. 15th Avenue N.W. 101st Street N.W. 16th Avenue N.W. 104th Street N.W. 19th Avenue N.W. 105th Street N.W. 21st Avenue N.W. 111th Street Ext. N.W. 111th Street	N.W. 26th Avenue
452	Salmon Creek	Interstate Hwy. 5 N.E. 117th Street N.E. Hazel Dell Avenue	N.E. 114th Street N.W. 114th Street N.W. 114th Street Ext. N.W. 114th Street N.W. 115th Street N.W. 14th Avenue N.W. 114th Street	N.W. 16th Avenue N.W. 16th Avenue Ext.

PRECINCT	NORTH	EAST	SOUTH	WEST
453	N.W. 111th Street Ext. N.W. 111th Street N.W. 7th Avenue N.W. 110th Way N.W. 5th Avenue N.W. 112th Street N.W. 4th Avenue N.W. 106th Street N.E. 106th Street	N.E. Hazel Dell Avenue	N.E. 99th Street N.W. 99th Street	N.W. 21st Avenue N.W. 101st Street N.W. 15th Avenue N.W. 105th Street N.W. 14th Avenue N.W. 104th Street N.W. 104th Street Ext. Cougar Creek
454	S.D. #37 / S.D. #122 Boundary Line	N.W. 21st Avenue	N.W. Bliss Road Salmon Creek 18/20 LD Boundary - 2022	School District 122/37 Boundary
455	N.W. 109th Street N.W. 26th Avenue N.W. 111th Street N.W. 111th Street Ext. N.W. 21st Avenue N.W. 105th Street N.W. 19th Avenue N.W. 104th Street	N.W. 16th Avenue N.W. 101st Street N.W. 21st Avenue	N.W. 99th Street	N.W. Lakeshore Avenue
456	N.W. 127th Street Ext. N.W. 127th Street N.W. 47th Avenue N.W. 131st Street	N.W. 36th Avenue N.W. 128th Street N.W. 127th Street N.W. 31st Avenue	N.W. 124th Street N.W. 36th Avenue N.W. 122nd Street N.W. 122nd Street Ext.	Burlington Northern R.R.
457	S.D. #37 / S.D. #122 Boundary Line	N.W. 11th Avenue	NW 139th St NW Hathaway Rd	N.W. 21st Ave
458	N.W. 124th Street N.W. 31st Avenue N.W. 124th Street N.W. 26th Avenue N.W. 119th Street	N.W. 21st Avenue N.W. 128th Street N.W. 127th Street N.W. 31st Avenue N.W. 114th Street Ext. N.W. 26th Avenue	N.W. 109th Street	N.W. Lakeshore Avenue N.W. 36th Avenue
460	N.W. 99th Street	N.W. 9th Avenue	NW 87th St NW 88th St	N.W. 17th Avenue N.W. 17th Avenue Ext.
461	NW 88th St NW 87th St	N.W. 9th Avenue	N.W. 78th Street Vancouver City Limits	N.W. Bacon Road N.W. 80th Street N.W. 17th Avenue N.W. 19th Avenue
470	N.W. 100th Street Ext. N.W. Lakeshore Drive N.W. 99th Street	N.W. 17th Avenue Ext. N.W. 17th Avenue N.W. 88th Street N.W. 19th Avenue N.W. 17th Avenue N.W. 80th Street N.W. Bacon Road	Vancouver City Limits	Burlington Northern R.R.
479	S.D. #37 / S.D. #122 Boundary Line (Salmon Creek) N.W. 51st Avenue Ext. N.W. 149th Street Ext. Salmon Creek	N.W. 36th Avenue	N.W. 131st Street N.W. 39th Avenue N.W. McCann Road N.W. 43rd Avenue N.W. Ashley Heights Drive N.W. McCann Road N.W. 142nd Street N.W. 142nd Street ext.	Burlington Northern R.R.
480	N.W. 209th Street Ext. N.W. 209th Street N.W. 41st Avenue N.W. 199th Street N.E. 199th Street	Interstate Hwy. 5	N.E. 179th Street	Burlington Northern R.R.
481	N.W. 179th Street	Interstate Hwy. 5	S.D. #122 / S.D. #37 Boundary Line	School District 37/122 Boundary 49th/20th LD boundary - 2022
482	N.E. 179th Street	Whipple Creek Boundary Line S.D. #122 / S.D. #37	N.E. 159th Street	N.E. Union Road N.E. 15th Avenue
483	N.E. 179th Street	N.E. 29th Avenue N.E. 166th Street N.E. 28th Avenue N.E. 164th Street N.E. 27th Avenue N.E. 161st Street	N.E. 159th Street Boundary Line S.D. #122 / S.D. #37	Whipple Creek

PRECINCT	NORTH	EAST	SOUTH	WEST
		N.E. 28th Avenue N.E. 160th Street N.E. 29th Avenue		
484	N.E. 184th St. Ext. S.D. #119 / S.D. #122 Boundary Line	N.E. 34th Ave N.E. 34th Ave ext. CCFR / FD6 Boundary Line	N.E. 159th Street ext N.E. 29th Avenue N.E. 160th Street N.E. 28th Avenue N.E. 161st Street	N.E. 27th Avenue N.E. 164th Street N.E. 28th Avenue N.E. 166th Street N.E. 29th Avenue
485	Ridgefield City Limits N.E. 259th Street N.E. 29th Avenue N.E. 269th Street N.E. 269th Street Ext.	School District 122/119 Bounary NE 259th Street NE 50th Avenue School District 122/119 Bounary	N.E. 219th Street	Interstate Hwy. 5 NE Carty Road NE 10th Avenue City of Ridgefield Limits
487	N.E. 219th Street	S.D. #122 / S.D. #119 Boundary Line	N.E. 179th Street N.E. 15th Avenue S.D. #122 / S.D. #37 Boundary Line	Interstate Hwy. 5
490	SR 501 Ext. Ridgefield City Limits	NE 10th Avenue NE Carty Road Interstate Hwy. 5	N.W. 199th Street N.W. 41st Avenue N.W. 209th Street N.W. 209th Street Ext. Burlington Northern R.R. 20h/49th Legislative Boundary 2022	Columbia River (Clark County Boundary Line)
491	Ridgefield City Limits	Ridgefield City Limits	Ridgefield City Limits	Ridgefield City Limits
492	Ridgefield City Limits	Ridgefield City Limits	Ridgefield City Limits	Ridgefield City Limits
499	Ridgefield City Limits	N. 35th Avenue	Pioneer Street	N Reiman Rd
500	S. Refuge Road	S. Hillhurst Road S Great Blue Road S Lake River Ter S 15th Way S Taverner Dr S Nighthawk Rd NW Hillhurst Rd S 35th Pl	Ridgefield City Limits	Ridgefield City Limits
501	Ridgefield City Limits N.W. Main Avenue N. Heron Drive N. 13th Place N. 8th Way N. Falcon Drive N. Lark Drive N. 5th Way	N. 23rd Place	Pioneer Street	Ridgefield City Limits
502	State Route 501	Interstate I-5	S. 20th Way  Ridgefield City Limits	S Royle Road Gee Creek Ridgefield City Limits S Royle Road
503	Ridgefield City Limits	Ridgefield City Limits N. 45th Avenue	Pioneer Street	N. 35th Avenue
504	Ridgefield City Limits	N.W. 51st Avenue N. Reiman Road	N. 23rd Place Ext. N. 23rd Place N. 5th Way N. Lark Drive N. Falcon Drive N. 8th Way N. 13th Place N. Heron Drive	N. Main Avenue
505	S.D. #122 / S.D. #101 Boundary Line (East Fork Lewis River)	S.D. #122 / S.D. #101 Boundary Line La Center City Limits S.D. #122 / S.D. #101 Boundary Line	N.E. 269th Street Ext. N.E. 269th Street N.E. 29th Avenue N.E. 259th Street Ridgefield City Limits	NW 11th Avenue
506	Pioneer Street	Gee Creek Ridgefield City Limits Gee Creek	S. Royle Road S. Hillhurst Road S Night Hawk Rd S Taverner Dr S 15th Way S Lake River Ter S Great Blue Road S. Hillhurst Road	S. 8th Court S. 8th Avenue

PRECINCT	NORTH	EAST	SOUTH	WEST
507	Pioneer Street	S. 8th Avenue S. Hillhurst Road	S. Refuge Road	Ridgefield City Limits
508	N. 10th Street I-5 N. 20th Street N. 65th Avenue Ridgefield City Limits	Ridgefield City Limits	Ridgefield City Limits	Interstate I-5 State Route 501 N. Royle Road
509	NW Hillhurst Rd Ridgefield City Limits	Ridgefield City Limits	Ridgefield City Limits NW 229th Street Extended NW 229th Street	Ridgefield City Limits NW 35th PI
510	Woodland City Limits Clark / Cowlitz Co. Boundary (North Fork Lewis River)	S.D. #103 Boundary Line S.D. #101 Boundary Line	N.E. 40th St. (S.D. #101 Boundary Line) N.W. 4th Avenue N.W. 409th Street N.W. 9th Avenue S.D. #101 Boundary Line N.W. 29th Avenue N.W. 379th Street S.D. #101 Boundary Line	Clark / Cowlitz Co. Boundary (North Fork Lewis River) (Horseshoe Lake) Woodland City Limits
511	Clark / Cowlitz Co. Boundary (Horseshoe Lake)	N.W. Lakeshore Drive Ext. Woodland City Limits	Woodland City Limits	Clark / Cowlitz Co. Boundary (Horseshoe Lake)
512	State Route 501	S Royle Road	Ridgefield City Limits SW 10th Way Ridgefield City Limits	Gee Creek
513	Lewis River (Clark / Cowlitz County Boundary Line) S.D. #122 / S.D. #101 Boundary Line	NW 11th Avenue	Ridgefield City Limits	Columbia River (Clark County Boundary Line)
514	City of Lacey Limits	City of Lacey Limits	City of Lacey Limits N.W. La Center Road	City of Lacey Limits
515	N.E. North Fork Ave. La Center City Limits	La Center City Limits N.E. 339th Street N.E. 24th Ave La Center City Limits NE Lockwood Creek Road La Center City Limits	La Center City Limits	La Center City Limits E Ivy Avenue E 4th Street E Stonecreek Drive E 7th Street E Fir Avenue E Pioneer Loop E Southview Heights Drive E Heritage Loop Aspen Avenue
516	NW Bolen Street La Center City Limits	NE North Fork Avenue Aspen Avenue E Heritage Loop	E Southview Heights Drive W 10th Street NW Pacific Highway La Center City Limits	Pacific Highway NW Larsen Drive La Center City Limits
517	Parcel ID - 214425000			

PRECINCT	NORTH	EAST	SOUTH	WEST
520	S.D. #101 / S.D. #102 Boundary Line	N.E. 31st Avenue Ext N.E. 31st Avenue N.E. 389th Street N.E. Jenny Creek Road N.W. Jenny Creek Road N.W. 359th Street N.W. 14th Avenue	La Center City Limits N.W. Pacific Hwy. Interstate Hwy. 5	S.D. #101 / S.D. #102 Boundary Line
521	N.W. Pollock Road LaCenter City Limits	East Fork Lewis River	S.D. #122 Boundary Line N.E. 299th Street	N.E. Timmen Road LaCenter City Limits N.E. Timmen Road LaCenter City Limits
522	N.W. Pacific Highway W. 10th Street E. Southview Heights Drive E. 13th Street	E. Fir Avenue E. 7th Street E. Stonecreek Drive E. 4th Street E. Ivy Avenue S.D. #101 Boundary line East Fork Lewis River N.W. Pollock Road LaCenter City Limits N.E. Timmen Road LaCenter City Limits	LaCenter City Limits	LaCenter City Limits (Interstate Highway 5) LaCenter City Limits (N.W. LaCenter Road) East Fork Lewis River (LaCenter City Limits) LaCenter City Limits
523	LaCenter City Limits	N.W. 3rd Place S.D. #122 Boundary Line	S.D. #122 Boundary Line	N.W. 11th Avenue N.W. 11th Avenue Ext. S.D. #122 Boundary Line
524	N.W. Pacific Highway (Intersection of S.D. #102 / S.D. #101 Boundary Line)	LaCenter City Limits N.W. Pacific Highway LaCenter City Limits	LaCenter City Limits (N.W. LaCenter Road) North Fork Lewis River	North Fork Lewis River S.D. #102/101 Boundary Line
525	N.E. 379th Street N.E. Christensen Road N.E. 389th Street Ext. West Fork - Lockwood Creek Lockwood Creek N.E. 339th Street N.E. 79th Avenue N.E. 349th Street S.D. #101 / S.D. #119 Boundary Line	S.D. #101 / S.D. #119 Boundary Line	S.D. #101 / S.D. #119 Boundary Line N.E. 72nd Avenue N.E. Landerholm Road N.E. 40th Avenue N.E. Lockwood Creek Road	B.P.A. Power Lines N.E. Finalburg Road N.E. 31st Avenue N.E. Brothers Road N.E. 41st Avenue
527	N.E. 389th Street N.E. 31st Avenue N.E. 394th Street	N.E. 41st Avenue N.E. Brothers Road N.E. 31st Avenue N.E. Finalburg Road B.P.A. Power Transmission Lines N.E. Lockwood Creek Road N.E. 40th Avenue N.E. Landerholm Road N.E. 72nd Avenue S.D. #101 / S.D. #119 Boundary Line	S.D. #101 / S.D. #119 Boundary Line (East Fork Lewis River)	S.D. #101 / S.D. #119 Boundary Line (East Fork Lewis River) East Fork Lewis River La Center City Limits N.W. 14th Avenue N.W. 359th Street N.W. Jenny Creek Road N.E. Jenny Creek Road
528	S.D. #101 / S.D. #103 Boundary Line	S.D. #101 / S.D. #103 Boundary Line S.D. #101 / S.D. #119 Boundary Line	N.E. 349th Street N.E. 349th Street Ext. N.E. 349th Street N.E. 79th Avenue N.E. 339th Street	Lockwood Creek N.E. 389th Street Ext. N.E. Christensen Road N.E. 379th Street N.E. 41st Avenue N.E. 394th Street N.E. 31st Avenue Ext. S.D. #101/S.D. #102 Boundary Line
530	Clark / Cowlitz County Boundary Line (North Fork Lewis River) (Lake Merwin)	S.D. #103 / S.D. #119 Boundary Line	S.D. #103 / S.D. #119 Boundary Line S.D. #103 / S.D. #101 Boundary Line	S.D. #103 / S.D. #101 Boundary Line S.D. #103 / S.D. #102 Boundary Line
534	SD 101/119 Boundary Line NE 339th Street Ext	N.E. Lewisville Hwy.	N.E. 299th Street NE 82nd Avenue N.E. Mason Creek Road N.E. J.R. Anderson Road	N.E. 72nd Avenue S.D. #119 / S.E. #101 Boundary Line
535	S.D. #119 / S.D. #103 Boundary Line N.E. Munch Road	N.E. Munch Road N.E. Reid Road N.E. 156th Avenue N.E. Fargher Lake Hwy. N.E. Lewisville Hwy.	Boundary Line of Fire Dist. 10 and Clark Co. Fire & Rescue N.E. 339th Street Ext.	S.D. #119 / S.D. #101 Boundary Line
536	N.E. Fargher Lake Hwy.	N.E. Worthington Road	N.E. 339th Street Ext.	N.E. Lewisville Hwy.



PRECINCT	NORTH (SR 503)	EAST	SOUTH	WEST
	N.E. Worthington Road	N.E. 369th Street Ext. N.E. 206th Avenue Ext. N.E. 359th Street Ext. N.E. 216th Avenue Ext.		
537	Clark / Cowlitz County Boundary Line (Lake Merwin) (North Fork Lewis River)	Canyon Creek Belvins Rd 20/17 Legislative District 2022	SR 503 NE 221st Ave NE Cedar Creek Rd	S.D. #119 / S.D. #103 Boundary Line
538	S.D. #119 / S.D. #103 Boundary Line N.E. Cedar Creek Road	N.E. 221st Avenue (SR 503) N.E. 399th Street (SR 503) N.E. 216th Avenue (SR 503)	N.E. Fargher Lake Hwy. (SR 503)	N.E. 156th Avenue N.E. Reid Road N.E. Munch Road S.D. #119/S.D. #103 Boundary Line
540	N.E. J.R. Anderson Road N.E. Mason Creek Road NE 82nd Ave NE 299th Street N.E. Lewisville Hwy. N.E. 339th Street Ext.	CCFR/Fire 10/Fire 3 Boundary 2022 Rock Creek East Fork Lewis River	N.E. Lewisville Hwy N.E. 269th Street N.E. 122nd Avenue N.E. 274th Street N.E. 117th Avenue N.E. Charter Oak Road N.E. 279th Street	S.D. #119 / S.D. #101 Boundary Line NE 66th Avenue
541	East Fork Lewis River	EMS #1 / EMS #2 Boundary N.E. 279th Street N.E. 147th Avenue N.E. 259th St NE 182nd Avenue	NE Palmer Road NE 244th Street NE 152nd Ave N.E. 249th Street City of Battle Ground Boundary	State Route 503 Lewisville Hwy
543	S.D. #119 / S.D. #122 Boundary Line (N.E. 219th Street) N.E. 219th Street	Battle Ground City Limits N.E. 92nd Avenue Ext. N.E. 92nd Avenue	N.E. 179th Street N.E. 34th Avenue Ext. N.E. 184th Street Ext.	S.D. #119 / S.D. #122 Boundary
544	N.E. 199th Street	N.E. 112th Avenue Battle Ground City Limits	N.E. 189th Street N.E. Cramer Road N.E. 179th Street	N.E. 92nd Avenue
545	S.D. #119 / S.D. #101 Boundary Line (East Fork Lewis River) N.E. 72nd Avenue Ext. N.E. 72nd Avenue N.E. 269th Street N.E. Daybreak Road	N.E. 82nd Avenue N.E. 259th Street N.E. Manley Road N.E. 92nd Avenue N.E. 239th Street N.E. 82nd Avenue	N.E. 219th Street	S.D. #119 / S.D. #122 Boundary
550	N.E. 179th Street	N.E. 92nd Avenue N.E. 156th Street	Salmon Creek N.E. 50th Avenue N.E. Salmon Creek Street N.E. 50th Avenue N.E. 159th Street Ext. (North Boundary Census Tract 404.09 Census Block 1012)	N.E. 34th Ave N.E. 34th Ave ext. Clark County Fire and Rescue Boundary
551	Parcel ID - 105900000			
552	NE 134th Street	NE 60th Avenue	N.E. 129th Street	N.E. 50th Avenue

PRECINCT	NORTH	EAST	SOUTH	WEST
553	S.D. #119 / S.D. #122 Boundary Line (N.E. 159th Street) N.E. 159th Street Ext. (North Boundary Census Tract 404.09 Census Block 1012)	N.E. 50th Avenue N.E. Salmon Creek Street N.E. 50th Avenue	N.E. 131st Street	S.D. #119 / S.D. #37 Boundary Line N.E. Salmon Creek Avenue N.E. 35th Avenue N.E. 144th Street Ext. S.D. #119 / S.D. #37 Boundary Line
554	N.W. 14th Street N.W. 25th Avenue N.W. 15th Street N.W. Onsdorff Blvd.	N.W. 20th Avenue	W. Main Street	N.W. 30th Avenue N.W. 30th Avenue Ext.
555	Salmon Creek	N.E. 72nd Avenue	N.E. 129th Street NE 60th Avenue NE 134th Street	N.E. 50th Avenue
556	N.E. 119th Street	N.E. 65th Avenue N.E. 114th Street N.E. 64th Avenue N.E. 109th Street N.E. Maitland Road	Interstate Hwy. 205	N.E. 50th Avenue
557	N.E. 139th Street	N.E. 87th Avenue	N.E. 119th Street	N.E. 50th Avenue N.E. 129th Street N.E. 72nd Avenue
558	W. Main Street	S.W. 10th Avenue	S.W. Eaton Blvd.	S.W. 20th Avenue
559	Battle Ground City Limits	Battle Ground City Limits	N.E. 238th Street	N.E. 132nd Avenue
560	N.E. 131st Street	N.E. 50th Avenue	Interstate Hwy. 205	S.D. #119 / S.D. #37 Boundary Line
561	N.E. 119th Street	N.E. 87th Avenue S.D. #119/S.D. #114 Boundary Line (N.E. 105th Street) S.D. #119/S.D. #114 Boundary Line	Interstate Hwy. 205	N.E. 72nd Avenue
562	Metro Park District Boundary Line N.E. 117th Ave N.E. 119th Street	N.E. 132nd Avenue	N.E. 114th Street N.E. 130th Avenue N.E. 111th Street N.E. 124th Avenue N.E. 114th Street	N.E. 117th Avenue
563	N.E. 114th Street N.E. 65th Avenue N.E. 119th Street	N.E. 72nd Avenue	Interstate Hwy. 205	N.E. Maitland Road N.E., 109th Street N.E. 64th Avenue
564	CRWD - Boundary N.E. 152nd Ave Metro Park District Boundary Line NE 105th Street	NE 157th Avenue	NE 99th Street	CRWD Boundary
565	Interstate Hwy. 205	N.E. 50th Avenue N.E. St. Johns Road	S.D. #119 / S.D. #37 Boundary Line	S.D. #119 / S.D. #37 Boundary Line
566	Interstate Hwy. 205	Chelatchi Prairie Rail Road City of Vancouver Bounday Line Chelatchi Prairie Rail Road	S.D. #119 / S.D. #37 Boundary Line	S.D. #119 / S.D. #37 Boundary Line N.E. St. Johns Road N.E. 50th Avenue
567	Interstate Hwy. 205	Interstate Hwy. 205 S.D. #119 / S.D. #114 Boundary Line	S.D. #119 / S.D. #114 Boundary Line S.D. #119 / S.D. #37 Boundary Line	Chelatchi Prairie Rail Road City of Vancouver Boundary Line Chelatchi Prairie Rail Road
568	N.E. 144th Street	NE 152nd Avenue	NE 114th Street Extended NE 132nd Avenue NE 119th Street	NE 117th Avenue
569	N.E. 114th Street Extended N.E. 114th Street	N.E. 124th Avenue	N.E. 99th Street N.E. 117th Avenue N.E. 107th Street	N.E. 112th Avenue

PRECINCT	NORTH	EAST	SOUTH	WEST
570	Salmon Creek N.E. 176th Street Ext. Battle Ground City Limits	S.D. #119 / S.D. #98 Boundary Line	N.E. 144th Street N.E. 117th Avenue N.E. 131st Street N.E. Laurin Road N.E. 134th Street	N.E. 87th Avenue N.E. 139th Street N.E. 72nd Avenue
571	N.E. 105th Street N.E. 94th Avenue N.E. 107th Street	N.E. 108th Avenue	N.E. 99th Street S.D. #119 / S.D. #114 Boundary	S.D. #119 / S.D. #114 Boundary
572	N.E. 134th Street N.E. Laurin Road N.E. 131st Street	N.E. 117th Avenue Metro Park District Boundary Line	N.E. 107th Street N.E. 107th Street Ext. N.E. 107th Street N.E. 94th Avenue N.E. 105th Street	N.E. 87th Avenue
573	N.E. 111th Street N.E. 130th Avenue N.E. 114th Street CCFD #3 / CCFD #5 Boundary Line	N.E. 152nd Avenue	CRWD and City of Vancouver Boundary Line N.E. 99th Street	N.E. 137th Avenue N.E. 102nd Street N.E. 132nd Avenue N.E. 103rd Street N.E. 130th Avenue N.E. 104th Street N.E. 127th Avenue N.E. 109th Street N.E. 124th Avenue
574	Battle Ground City Limits	Battle Ground City Limits	Battle Ground City Limits	Battle Ground City Limits
Island precinct within the city limits consisting of parcel nos: 119202226, 119202194, 119202224, 119202198, 119202200, 119202202, 119202216, 119202204, 119202186, 119202188, 119202190, 119202196, 119202222, 119202218, 119202210, 119202208, 119202206, 119202212, 119202214, 119202192, and 119202220.				
575	S.W. Eaton Boulevard S.E. Eaton Boulevard S.E. Grace Avenue S.E. 25th Street Ext. Railroad Tracks S.E. Eaton Boulevard	N.E. 157th Avenue Battle Ground City Limits Salmon Creek S.D. #98 Boundary Line (Battle Ground City Limits) Battle Ground City Limits N.E. 167th Avenue Battle Ground City Limits	Battle Ground City Limits Railroad Tracks Battle Ground City Limits N.E. 142nd Avenue Battle Ground City Limits N.E. 184th Street N.E. Caples Road Battle Ground City Limits	N.E. 120th Avenue S.W. 40th Street Ext. Battle Ground City Limits N.E. 122nd Avenue N.E. 192nd Street Battle Ground City Limits N.E. 189th Street N.E. 112th Avenue
Excluding Precincts: 574, 576 & 578				
576	Battle Ground City Limits	Battle Ground City Limits	Battle Ground City Limits	Battle Ground City Limits
Island precinct within the city limits consisting of parcel nos: 119202336, 119202338, 119202342, 119202344, and 119202346.				
577	N.E. 179th Street N.E. Cramer Road N.E. 189th Street Battle Ground City Limits	Battle Ground City Limits N.E. 142nd Avenue	N.E. 176th Street Ext. Salmon Creek N.E. 156th Street	N.E. 92nd Avenue
578	Battle Ground City Limits Railroad Track	Battle Ground City Limits	Battle Ground City Limits	Battle Ground City Limits
Island precinct within the city limits consisting of parcel nos: 986029241, 119202088, 119202090, 119202092, 119202094, 119202096, 119202098, 119202036, 119202034, 119202050, 119202048, 119202030, 119202052, 119202046, 119202038, 119202032, 119202040, 119202042, 119202028, 119202044, 119202054, 119202060, 119202026, 119202056, 119202058, 119202024, 119202020, 119202062, 119202066, 119202016, 119202014, 119202070, 119202078, 119202076, 119202006, 119202008, 119202004, 119202022, 119202064, 119202018, 119202068, 119202012, 119202080, 119202074, 119202072, 119202010, 119202086				
579	N.E. 199th Street	N.E. 167th Street	N.E. 189th Circle S.D. #98 Boundary Line	Salmon Creek (Battle Ground City Limits) Battle Ground City Limits N.E. 157th Avenue
580	N.E. 279th Street N.E. Charter Oak Road+B1911 N.E. 117th Avenue N.E. 274th Street	N.E. 122nd Avenue N.E. 269th Street N.E. Lewisville Highway N.E. 122nd Avenue	Battle Ground City Limits N.E. 239th Street Battle Ground City Limits N.E. 92nd Avenue N.E. 219th Street	N.E. 82nd Avenue N.E. 239th Street N.E. 92nd Avenue N.E. Manley Road N.E. 259th Street N.E. 82nd Avenue N.E. Daybreak Road East Fork Lewis River N.E. 72nd Avenue
581	W. Main Street	S.W. 20th Avenue	N.E. 199th Street Battle Ground City Limits N.E. 199th Street Battle Ground City Limits	N.E. 92nd Avenue

PRECINCT	NORTH	EAST	SOUTH	WEST
582	Battle Ground City Limits (N.E. 239th Street Ext.)	N.W. 20th Avenue	N.W. Onsdorff blvd. N.W. 15th Street N.W. 25th Avenue N.W. 14th Street	N.W. 30th Avenue
583	N.W. 9th Street N.E. 15th Avenue N.W. Onsdorff Blvd.	N.W. 10th Avenue	W. Main Street	N.W. 20th Avenue
584	N.W. Onsdorff Boulevard N.W. 4th Avenue N.W. 19th Street	N. Parkway Ave N.E. 7th Street N.E. 3rd Avenue	E. Main Street W. Main Street	State Route 503
585	Battle Ground City Limits	Battle Ground City Limits	E Main Street Fairgrounds Ave	S.E. Grace Avenue N.E. Grace Avenue
586	S.W. Rasmussen Blvd. S.E. Rasmussen Blvd.	S.E. 5th Avenue S.E. 10th Street S.E. 4th Avenue S.E. 17th Street S.E. 2nd Place	S.E. Eaton Blvd. S.W. Eaton Blvd.	S.W. 10th Avenue
587	N.E. 7th Street N.E. Clark Avenue N.E. 6th Street	Railroad Tracks S.E. 25th Street Ext. (18th / 17th Legislative District Boundary)	S.E. 25th Street Ext. (18th / 17th Legislative District Boundary) S.E. Grace Avenue S.E. Eaton Blvd.	S.E. 2nd Place S.E. 17th Street S.E. 4th Avenue S.E. 10th Street S.E. 5th Avenue S.E. Rasmussen Blvd. S. Parkway Avenue E. Main Street N.E. 3rd Avenue
588	Battle Ground City Limits N.W. 25th Street	N.W. 6th Avenue N.W. 19th Street N.W. 4th Avenue	N.W. Onsdorff Blvd. N.W. 16th Avenue N.W. 15th Avenue N.W. 9th Street	N.W. 20th Avenue N.E. 112th Ave. Battle Ground City Limits
589	E Main St Goddard Rd Battle Ground City Limits	Battle Ground City Limits	S.E. Eaton Blvd.	Railroad Tracks Fairgrounds Ave
590	NE 219th Street	N.E. 232nd Avenue Ext. N.E. 209th Street 207th Ave	N.E. Risto Road N.E. 182nd Avenue N.E. 189th Street	N.E. 167th Avenue
591	East Fork Lewis River	East Fork Lewis River FD #3 / FD #13 Boundary	N.E. 259th Street Ext. N.E. 259th Street	N.E. 147th Avenue N.E. 279th Street N.E. 152nd Avenue Ext.
592	N.E. Allworth Road N.E. 222nd Avenue N.E. 247th Street Ext. N.E. 227th Avenue Ext. N.E. 249th Street Ext. N.E. 232 Avenue Ext. N.E. 259th Street Ext.	N.E. 292nd Avenue Ext. Fire District 3/13 Boundary Line	N.E. 219th Street	N.E. 219th Street Ext. Rock Creek
593	NE 249th Street NE 152nd Avenue NE 244th Street NE Palmer Road NE 249th Street	NE Crawford Road NE 182nd Avenue	N.E. 219th Street NE 167th Avenue NE 1199h Street	Battle Ground City Limits N.E. 142nd Avenue
594	N.E. 239th Street	N.E. 102nd Avenue	W. Main Street	N.E. 92nd Avenue Battle Ground City Limits
595	N.E. 339th Street Ext.	N.E. 222nd Avenue Ext. N.E. 329th Street Ext. N.E. 232nd Avenue Ext.	East Fork Lewis River	Rock Creek N.E. 309th Street Ext. N.E. 162nd Avenue Ext. N.E. 314th Street Ext. N.E. 172nd Avenue Ext.
596	Battle Ground City Limits	Battle Ground City Limits	N.E. 199th Street	N.E. 92nd Avenue
	Island precinct within the city limits consisting of parcel nos: 226743000, 226743005, 226743010, 226830000, 226761000, 226712000, 226713000			

PRECINCT	NORTH	EAST	SOUTH	WEST
597	Battle Ground City Limits	Battle Ground City Limits	N.E. 199th Street	N.E. 92nd Avenue
598	Battle Ground City Limits	Battle Ground City Limits	N.E. 199th Street	Battle Ground City Limits
599	W. Main Street	S. Parkway Avenue	S.W. Rasmussen Blvd,	S.W. 10th Avenue
600	Yacolt Town Limits	Yacolt Town Limits	Yacolt Town Limits	Yacolt Town Limits
601	N.E. Padden Parkway	N.E. 130th Avenue	N.E. 76th Street	N.E. 107th Avenue
602	N.E. 219th Street	Fire District 3/13 Boundary Line	S.D. #119 / S.D. #98 Boundary Line	S.D. #119 / S.D. #98 Boundary Line N.E. 209th Street N.E. 232nd Avenue N.E. 232nd Avenue Ext.
603	Clark / Cowlitz County Boundary Line (North Fork Lewis River) (Yale Lake)	Clark / Skamania County Boundary Line	East Fork Lewis River N.E. Dole Valley Road Unnamed creek Rock Creek Cedar Creek S.D. #119 / S.D. #98 Boundary Line	N.E. 292nd Avenue Ext. East Fork Lewis River N.E. Railroad Avenue Yacolt Town Limits 17/20 Legislative Boundary 2022 NE Belvins Road 17/20 Legislative Boundary 2022
604	N.E. Ward Road N.E. Davis Road N.E. 109th Street	N.E. 212th Avenue	Camas City Limits	Lacamas Creek N.E. 182nd Avenue N.E. 88th Street S.D. #114 / S.D. #98 Boundary Line
605	18th / 20th Legislative District Boundary Line (N.E. Chelatchie Road) (N.E. Gerber-McKee Road) (N.E. 419th Street) (N.E. Yale Bridge Road) N.E. 424th Street	Railroad Tracks Yacolt Town Limits N.E. Railroad Avenue	East Fork Lewis River	FD3/FD13 Boundary Line FD3/FD13 Boundary Line Ext Southern Yacolt Town Limit Boundary Ext. NE 221st Ave Ext NE 339th St Ext FD10/FD13 Boundary Line NE Worthington Rd NE 216th Ave NE 399th St NE 221st Ave
606	East Fork Lewis River	Clark / Skamania County Boundary Line	S.D. #119 / S.D. #98 Boundary Line	Cedar Creek Rock Creek Unnamed creek N.E. Dole Valley Road
607	N.E. Gren Fels Drive N.E. 254th Street Battle Ground City Limits N.E. 249th Street	N.E. 142nd Avenue Battle Ground City Limits N.E. 246th Circle N.E. 132nd Avenue N.E. 244th Street Battle Ground City Limits N.E. 242nd Street Battle Ground City Limits N.E. 132nd Avenue	N.W. 19th Street	N.W. 6th Avenue N.W. 25th Street State Route 503
608	Battle Ground City Limits N.E. 18th Street Battle Ground City Limits	N.E. 142nd Avenue N.E. Grace Avenue	N.E. 6th Street N.E. Clark Avenue N.E. 7th Street	N. Parkway Avenue N.E. 132nd Avenue
610	S.D. #98 / S.D. #119 Boundary Line	N.E. 22nd Avenue Ext. N.E. 199th Street S.E. #98 / S.E. #119 Boundary Line	N.E. 169th Street N.E. 222nd Avenue N.E. 164th Street N.E. 217th Avenue N.E. 159th Street	N.E. 202nd Avenue N.E. 164th Street N.E. 207th Avenue N.E. Baker Creek Road N.E. 189th Street S.D. #98 / S.D. #119 Boundary Line
611	N.E. Risto Road	S.D. #98 / S.D. #119 Boundary Line N.E. 189th Street N.E. 207th Avenue N.E. Baker Creek Road N.E. 207th Avenue N.E. 164th Street N.E. 202nd Avenue	N.E. 161st Street ext N.E. 161st Street N.E. 197th Avenue N.E. 164th Street	N.E. 182nd Avenue

PRECINCT	NORTH	EAST	SOUTH	WEST
612	N.E. 109th Street N.E. 127th Avenue N.E. 104th Street N.E. 130th Avenue N.E. 103rd Street N.E. 132nd Avenue N.E. 102nd Street	N.E. 137th Avenue	N.E. 99th Street	N.E. 124th Avenue
613	S.D. #98 / S.D. #119 Boundary Line	Cedar Creek East Boundary Census Block 112 Census Tract 405.01)	Forest Service Road L-1400 N.E. Rawson-Micro Road N.E. Rawson Road N.E. 139th Street	N.E. 212th Avenue N.E. 159th Street N.E. 217th Avenue N.E. 164th Street N.E. 222nd Avenue N.E. 169th Street N.E. 239th Avenue N.E. Richards Road Salmon Creek West Boundary Census Block 321 Census Tract 405.01
614	N.E. 99th Street	N.E. Ward Road 5th Plain Creek	N.E. 88th Street N.E. Ward Road	N.E. 162nd Avenue
615	Battle Ground City Limits S.D. #98 / S.D. #119 Boundary Line	N.E. 182nd Avenue	N.E. 159th Street	S.D. #98 / S.D. #119 Boundary Line Battle Ground City Limits
616	N.E. Ward Road N.E. 88th Street	N.E. 182nd Avenue	Lacamas Creek 5th Plain Creek City of Vancouver City Limits N.E. 78th Street	N.E. 162nd Avenue
617	N.E. 159th Street	N.E. 182nd Avenue N.E. Ward Road	N.E. 99th Street	S.D. #98/119 Boundary Line N.E. 119th Street S.D. #98/119 Boundary Line N.E. 152nd Avenue
618	N.E. 139th Street N.E. Rawson Road N.E. Rawson-Micro Road Forest Service Road L-1400 18th / 15th Legislative District Boundary Line (Forest Service Road L-1400) (S.D. #98 / S.D.#117 Boundary Line)	S.D. #98 / S.D.#114 Boundary Line	S.D. #98 / S.D.#114 Boundary Line	N.E. 212th Avenue
619	N.E. Padden Parkway N.E. Ward Road	N.E. 162nd Avenue	N.E. 78th Street	N.E. 152nd Avenue
620	N.E. 164th Street N.E. 197th Avenue N.E. 161st Street N.E. 202nd Avenue N.E. 159th Street	N.E. 212th Avenue	N.E. 109th Street N.E. Davis Road	N.E. Ward Road N.E. 182nd Avenue
621	N.E. 78th Street N.E. 76th Street	N.E. Covington Road N.E. 94th Avenue	N.E. 58th Street N.E. 58th Street Ext.	Interstate Hwy. 205
622	N.E. 76th Street	N.E. Ward Road	Vancouver City Limits N.E. Fourth Plain Boulevard N.E. 124th Avenue Vancouver City Limits N.E. 121st Avenue N.E. Fourth Plain Boulevard	N.E. 131st Avenue
623	N.E. 107th Street	N.E. 117th Avenue / State Route 503	N.E. 99th Street	N.E. 108th Avenue
624	N.E. 78th Street	Vancouver City Limits	N.E. Fourth Plain Boulevard	N.E. 162nd Avenue
625	S.D. #114 / S.D. #98 Boundary Line	S.D. #114 / S.D. #117 Boundary Line	S.D. #114 / S.D. #117 Boundary Line Camas City Limits	N.E. 212th Avenue Ext. N.E. 212th Avenue
626	N.E. 99th Street	N.E. 137th Avenue	N.E. Padden Parkway	N.E. 130th Avenue
627	N.E. 99th Street	N.E. 152nd Avenue	N.E. 87th Street N.E. 142nd Avenue N.E. 88th Street	N.E. 137th Avenue

PRECINCT	NORTH	EAST	SOUTH	WEST
628	N.E. Padden Parkway	N.E. 152nd Avenue N.E. Ward Road	N.E. 76th Street	N.E. 130th Avenue
629	N.E. 99th Street	N.E. 162nd Avenue SD #114 / SD #98  Boundary Line	N.E. Ward Road N.E. 160th Avenue N.E. 85th Street N.E. 156th Avenue N.E. 86th Street N.E. 163rd Avenue N.E. 86th Street	N.E. 152nd Avenue
630	N.E. 99th Street	N.E. 130th Avenue	N.E. Padden Parkway	N.E. 107th Avenue N.E. 84th Street N.E. 112th Avenue N.E. 90th Street N.E. 115th Avenue N.E. 92nd Street Ext. State Route 503
631	S.E. McGillivray Blvd. S.E. 166th Avenue S.E. 26th Drive S.E. 22nd Drive S.E. 23rd Drive S.E. 174th Place S.E. 22nd Street S.E. 22nd Drive	S.E. 176th Avenue	S.E. 34th Street	S.E. 164th Avenue
632	S.D. #114 / S.D. #119 Boundary Line (N.E. 88th Street) N.E. 88th Street N.E. 90th Avenue N.E. 90th Street N.E. 92nd Avenue N.E. 92nd Street N.E. 93rd Avenue N.E. 90th Street	N.E. 94th Avenue	N.E. 76th Street N.E. 78th Street	Interstate Hwy. 205 S.D. #114 / S.D. #119 Boundary Line
633	N.E. 76th Street	N.E. 131st Avenue	N.E. Fourth Plain Boulevard N.E. 124th Avenue Vancouver City Limits N.E. 121st Avenue N.E. Fourth Plain Boulevard SR 500 N.E. 117th Avenue	N.E. 117th Avenue
634	N.E. 78th Street	N.E. 162nd Avenue	N.E. Fourth Plain Blvd Vancouver City Limits N.E. Fourth Plain Blvd	N.E. Ward Road
635	S.D. #114 / S.D. #119 Boundary Line	N.E. 117th Avenue	N.E. 92nd Street Ext. N.E. 115th Avenue N.E. 90th Street N.E. 112th Avenue N.E. 84th Street	N.E. 107th Avenue
636	S.D. #114 / S.D. #119 Boundary Line	N.E. 107th Avenue	N.E. 76th Street	N.E. 94th Avenue
637	S.E. 15th Street	S.E. 171st Place S.E. 170th Avenue S.E. 19th Street S.E. 172nd Place S.E. 20th Street S.E. 176th Ave S.E. 22nd Drive S.E. 22nd Street S.E. 174th Place S.E. 23rd Drive S.E. 25th Street S.E. 26th Drive	S.E. 26th Drive S.E. 166th Avenue S.E. McGillivray Blvd.	S.E. 164th Avenue
638	S.D. #114 / S.D. #119 Boundary Line	N.E. 94th Avenue	N.E. 90th Street N.E. 93rd Avenue N.E. 92nd Street N.E. 92nd Avenue N.E. 90th Street N.E. 90th Avenue N.E. 88th Street	S.D. #114 / S.D. #119 Boundary Line

PRECINCT	NORTH	EAST	SOUTH	WEST
639	N.E. 58th Street Ext. (Vancouver City Limits)	I-205	N.E. Burton Road	S.D. #37 Boundary Line N.E. 92nd Court S.D. #37 Boundary Line
640	N.E. 76th Street	N.E. 117th Avenue	Vancouver City Limits	N.E. Covington Road
641	Vancouver City Limits	S.E. 172nd Avenue	S.E. Tech Center Drive	S.E. 164th Avenue
642	S.D. #119 Boundary Line	I-205	N.E. 58th Street Ext. N.E. 58th Street	N.E. 87th Avenue S.D. #37 Boundary Line N.E. 78th Street N.E. 72nd Avenue
643	N.E. Covington Road	N.E. 102nd Avenue	N.E. 58th Street N.E. 58th Street Ext.	N.E. 94th Avenue
644	S.E. 20th Street	S.E. 192nd Avenue S.D. 117/114 Boundary	S.E. 34th Street	S.E. 176th Avenue
645	S.E. 15th Street	S.E. 192nd Avenue	S.E. 20th Street	S.E. 172nd Place S.E. 19th Street S.E. 170th Avenue S.E. 171st Place
646	N.E. 20th Street	Vancouver City Limits (N.E. 172nd Avenue)	N.E. 6th Street N.E. 168th Avenue N.E. 7th Street N.E. 167th Avenue N.E. 9th Street N.E. 166th Avenue N.E. 8th Street N.E. 163rd Avenue N.E. 9th Street	Vancouver City Limits (N.E. 162nd Avenue) (N.E. 14th Street Ext.) (N.E. 164th Avenue Ext.) N.E. 18th Street N.E. 164th Avenue
647	N.E. 18th Street	N.E. 192nd Avenue N.E. 5th Street Vancouver City Limits N.W. Friberg-Strunk Street Camas City Limits	Vancouver City Limits S.E. 20th Street	S.E. 192nd Avenue S.E. 1st Street Vancouver City Limits N.E. 172nd Avenue
648	S.E. 1st Street	S.E. 192nd Avenue	S.E. Mill Plain Blvd.	S.E. 172nd Avenue
649	N.E. 34th Street N.E. 163rd Avenue N.E. 33rd Street N.E. 165th Avenue N.E. 35th Street N.E. 166th Avenue N.E. 32nd Street N.E. 168th Avenue N.E. 31st Way N.E. 171st Avenue N.E. 32nd Street	N.E. 172nd Avenue	N.E. 20th Street	Vancouver City Limits N.E. 163rd Avenue Vancouver City Limits N.E. 162nd Avenue
650	S.D. #114 / S.D. # 37 Boundary Line N.E. 18th Street Ext.	N.E. 92nd Avenue Ext. S.D. #114 / S.D. # 37 Boundary Line	S.D. #114 / S.D. # 37 Boundary Line	S.D. #114 / S.D. #37 Boundary Line
651	N.E. Burton Road	Interstate Hwy. 205	N.E. 18th Street Ext.	S.D. #114 / S.D. # 37 Boundary Line
652	Vancouver City Limits	N.E. Gher Road N.E. 112th Avenue	Burton Road	Interstate Hwy. 205
653	Vancouver City Limits	N.E. 121st Avenue N.E. 122nd Avenue	N.E. 49th Street	N.E. 112th Avenue N.E. Gher Road
654	N.E. 49th Street N.E. 48th Street	NE 151st Avenue NE 47th Street NE 149th Avenue NE 46th Street NE 148th Avenue NE 43rd Street NE 147th Avenue NE 45th Street NE 144th Avenue NE 45th Street NE 143rd Avenue	N.E. 39th Street	N.E. 137th Avenue N.E. 44th Street N.E. 131st Avenue



PRECINCT	NORTH	EAST	SOUTH	WEST
655	N.E. 9th Street N.E. 163rd Avenue N.E. 8th Street N.E. 166th Avenue N.E. 9th Street N.E. 167th Avenue N.E. 7th Street N.E. 168th Avenue N.E. 6th Street N.E. 172nd Avenue Vancouver City Limits (N.E. 8th Street) (N.E. 8th Street Ext.)	Vancouver City Limits (N.E. 177 Avenue Ext.)	Vancouver City Limits	Vancouver City Limits (N.E. 162nd Avenue) (N.E. 164th Avenue Ext.)
656	N.E. 39th Street	N.E. 162nd Avenue	N.E. 34th Street	N.E. 149th Avenue N.E. 150th Avenue N.E. 38th Street N.E. 151st Avenue
657	Burton Road 28th Street	N.E. 115th Avenue N.E. 29th Street N.E. 116th Avenue N.E. 31st Street N.E. 119th Avenue N.E. Four Seasons Lane	N.E. 18th Street	Interstate Hwy. 205
658	N.E. 18th Street	Midline between N.E. 152nd Avenue & N.E. 153rd Avenue	N.E. 7th Street N.E. 145th Avenue N.E. 9th Street	NE 139th Ave NE 13th Street NE 140th Ave NE 141st Ave
659	N.E. 18th Street	N.E. 141st Ave N.E. 140th Ave N.E. 13th Street N.E. 139th Avenue N.E. 9th Street N.E. 145th/144th Avenue N.E. Hearthwood Blvd.	SE 1st Street NE 4th Street	NE 136th Avenue
660	N.E. 18th Street Ext. N.E. 97th Avenue Ext. N.E. 14th Street	N.E. 102nd Avenue	E. Mill Plain Blvd	S.D. #114 / S.D. #37 Boundary Line N.E. 92nd Avenue Ext.
661	S.E. 1st Street	N.E. 164th Avenue	S.E. Mill Plain Road	S.E. 155th Avenue
662	N.E. 28th Street	N.E. 160th Avenue N.E. 27th Circle N.E. 159th Avenue Ext. N.E. 26th Street N.E. 25th Street N.E. 159th Avenue N.E. 24th Street N.E. 158th Avenue N.E. 22nd Street N.E. 159th Avenue N.E. 20th Street N.E. 158th Avenue N.E. 19th Street N.E. 159th Avenue	N.E. 18th Street	N.E. 138th Avenue
663	N.E. 18th Street Ext.	Interstate Hwy. 205	S.E. Mill Plain Road	N.E. 102nd Avenue N.E. 14th Street N.E. 97th Avenue Ext.
664	N.E. 9th Street Ext. N.E. Countryside Drive N.E. Blue Grass Drive N.E. 156th Avenue N.E. 158th Avenue N.E. 7th Street N.E. 160th Avenue N.E. 9th Street Ext.	N.E. 162nd Avenue N.E. 164th Avenue	S.E. 1st Street	Midline between N.E. 152nd Avenue & N.E. 153rd Avenue
665	N.E. 49th Street	N.E. 122nd Avenue N.E. 39th Street Ext. N.E. 120th Avenue Ext. N.E. 38th Street Ext. N.E. 119th Avenue Ext. N.E. 119th Avenue	N.E. 31st Street N.E. 116th Avenue N.E. 28th Street N.E. 115th Avenue N.E. 28th Street	N.E. 112th Avenue

PRECINCT	NORTH	EAST	SOUTH	WEST
667	S.E. McGillivray Blvd. S.E. Village Loop Drive S.E. 26th Street Ext.	S.E. 164th Avenue	S.E. Cascade Park Drive S.E. 161st Avenue Ext. S.E. 35th Circle S.E. Baypoint Drive S.E. Fernwood Drive	Property Midline between S.E. Briarwood Drive & S.E. Balboa Drive
668	S.E. Fernwood Drive S.E. Baypoint Drive S.E. 35th Circle S.E. 161st Avenue Ext. S.E. Cascade Park Drive	S.E. 164th Avenue	Lewis and Clark Highway (SR 14)	Property Boundary Line along west boundary line of parcels on S.E. Balboa Drive
669	Lewis and Clark Highway (SR 14)	S.E. 164th Avenue Ext.	Columbia River (Vancouver City Limits) (Clark County Boundary Line)	Interstate Hwy. 205
670	S.E. Mill Plain Road	Interstate Hwy. 205	S.E. 10th Street S.E. 98th Avenue Saint Helens Avenue	S.D. #114 / S.D. #37 Boundary Line
671	Saint Helens Avenue S.E. 98th Avenue S.E. 10th Street	S.E. 102nd Avenue S.E. 12th Street S.E. 102nd Avenue ext.	S.E. French Road	S.D. #114 / S.D. #37 Boundary Line
672	S.E. 7th Street S.E. 136th Avenue S.E. Mill Plain Blvd.	S.E. Parkcrest Avenue S.E. 7th Street S.E. Olympia Drive S.E. 12th Street S.E. 140th Avenue S.E. 14th Street S.E. 136th Avenue	S.E. McGillivray Blvd.	S.E. 125th Avenue S.E. Laver Street S.E. 123rd Avenue
673	S.E. 10th Street	Interstate Hwy. 205	Lewis & Clark Highway (SR-14)	S.E. Ellsworth Road
674	S.E. 19th Street S.E. McGillivray Blvd.	S.E. Blairmont Drive S.E. 20th Street S.E. 146th Avenue S.E. 26th Street S.E. 145th Avenue S.E. 30th Street S.E. 146th Avenue	S.E. Briarwood Drive S.E. Bella Vista Road S.E. Bella Vista Avenue S.E. 28th Street S.E. 138th Avenue S.E. Angus Street S.E. Talton Avenue S.E. Forest Street	S.E. 131st Avenue
675	Lewis & Clark Highway (SR 14) S.E. 102nd Avenue Ext. S.E. 102nd Avenue S.E. 10th Street	S.E. Ellsworth Road Lewis & Clark Highway (SR 14) Interstate Hwy. 205	Columbia River (Vancouver City Limits) (Clark County Boundary Line)	S.D. #114 / S.D. #37 Boundary Line
676	NE 9th Street	NE 117th Avenue	SE Mill Plain Blvd	Interstate Hwy. 205
677	S.E. McGillivray Blvd. S.E. 121st Avenue S.E. 15th Street S.E. 123rd Avenue S.E. Riveridge Drive	S.E. 131st Avenue S.E. Forest Street S.E. Talton Avenue S.E. Angus Street S.E. 138th Avenue S.E. 28th Street S.E. Bella Vista Road	Lewis and Clark Hwy. (SR-14)	Interstate Hwy. 205
678	S.E. McGillivray Blvd.	S.E. 19th Street	S.E. Riveridge Drive	S.E. 123rd Avenue S.E. 15th Street S.E. 121st Avenue
679	S.E. Mill Plain Road	S.E. 136th Avenue	S.E. 7th Street S.E. 123rd Avenue S.E. Laver Street S.E. 125th Avenue S.E. McGillivray Blvd.	Interstate Hwy. 205
680	S.E. McGillivray Blvd.	Property Boundary Line along west boundary line of parcels on S.E. Balboa Drive	Lewis and Clark Hwy. (SR-14)	S.E. Briarwood Drive S.E. 146th Avenue S.E. 30th Street S.E. 145th Avenue S.E. 26th Street S.E. 146th Avenue S.E. 20th Street S.E. Blairmont Drive

PRECINCT	NORTH	EAST	SOUTH	WEST
681	S.E. Mill Plain Blvd.	Midline between S.E. 152nd Avenue & S.E. 153rd Avenue S.E. Parkcrest Avenue S.E. Blairmont Drive	S.E. McGillivray Blvd.	S.E. 136th Avenue S.E. 14th Street S.E. 140th Avenue S.E. 12th Street S.E. Olympia Drive S.E. 7th Street S.E. Parkcrest Avenue
682	N.E. 9th Street Ext.	N.E. 136th Avenue S.E. 136th Avenue	S.E. Mill Plain Road	N.E. 117th Avenue
683	N.E. 18th Street	N.E. 136th Avenue	N.E. 9th Street	Interstate Hwy. 205
684	S.E. 11th Street Ext.	S.E. Briarwood Drive	S.E. McGillivray Blvd.	S.E. Blairmont Drive S.E. Parkcrest Avenue
685	N.E. 39th Street	NE 141st Avenue NE 28th Street NE 138th Avenue	Parcel No. 164129005 Parcel No. 163995000 Midpoint between N.E. 25th Street and N.E. 26th Street N.E. 26th Street	N.E. 131st Avenue Southern boundary of Parcels 986035529:986035565:986035566 NE 132nd Avenue
686	N.E. 28th Street	N.E. 132nd Avenue N.E. 27th Street N.E. 131st Avenue N.E. 26th Street Midpoint between N.E. 25th Street and N.E. 26th Street Parcel No. 163995000 Parcel No. 164129005 N.E. 138th Avenue	N.E. 18th Way N.E. 18th Street	N.E. 126th Avenue N.E. 22nd Street N.E. 124th Avenue
687	N.E. 39th Street Ext. N.E. 122nd Avenue N.E. 39th Street	N.E. 132nd Avenue	N.E. 28th Street	N.E. 119th Avenue Ext. N.E. 31st Street N.E. 116th Avenue N.E. 29th Street N.E. 115th Avenue N.E. 28th Street N.E. 114th Avenue Ext. N.E. 33rd Street Ext. N.E. 119th Avenue N.E. 119th Avenue Ext. N.E. 38th Street Ext. N.E. 120th Avenue Ext.
688	Burnt Bridge Creek	Vancouver City Limits	N.E. 39th Street	N.E. 151st Avenue Ext.
689	N.E. 39th Street	N.E. 151st Avenue N.E. 38th Street N.E. 150th Avenue N.E. 149th Avenue N.E. 34th Street N.E. 148th Avenue	N.E. 28th Street	NE 141st Avenue
690	S.E. 34th Street	S.D. #117 / S.D. # 114 Boundary Line City of Vancouver Limits	Columbia River (Clark County Boundary Line)	Fisher Creek S.E. 180th Avenue S.E. Hiddenbrook Drive
691	N.E. 49th Street	N.E. 131st Avenue N.E. 44th Street N.E. 137th Avenue	N.E. 39th Street	N.E. 122nd Avenue
692	Burnt Bridge Creek	N.E. 151st Avenue Ext. N.E. 151st Avenue	N.E. 48th Street N.E. 49th Street	N.E. 137th Avenue
693	Vancouver City Limits N.E. 124th Avenue N.E. Fourth Plain Boulevard Vancouver City Limits N.E. 137th Avenue Vancouver City Limits N.E. Fourth Plain Boulevard Vancouver City Limits N.E. Ward Road N.E. Fourth Plain Boulevard Vancouver City Limits N.E. Fourth Plain Boulevard	N.E. 162nd Avenue	Burnt Bridge Creek	N.E. 121st Avenue

PRECINCT	NORTH	EAST	SOUTH	WEST
694	S.E. Mill Plain Road	S.E. 164th Avenue	S.E.11th Street Ext.	S.E. Parkcrest Avenue Midline between S.E. 152nd Avenue & S.E. 153rd Avenue
695	N.E. 18th Street	Vancouver City Limits N.E. 162nd Avenue N.E. 9th Street Ext. N.E. 160th Avenue	N.E. 7th Street N.E. 158th Avenue N.E. 156th Avenue N.E. Blue Grass Drive N.E. Countryside Drive N.E. 9th Street Ext. N.E. 9th Street	Midline between N.E. 152nd Avenue & N.E. 153rd Avenue
696	S.E. 39th Street S.E. 172nd Avenue S.E. Fisher Drive S.E. 177th Avenue S.E. 38th Street S.E. 179th Avenue S.E. 39th Street	S.E. 180th Avenue Fisher Creek	Columbia River (Clark County Boundary Line)	S.E. 164th Avenue
697	S.E. 11th Street Ext.	S.E. 164th Avenue	S.E. 26th Street Ext. S.E. Village Loop Drive S.E. McGillivray Blvd.	S.E. Briarwood Drive
698	N.E. 29th Street N.E. 182nd Avenue N.E. 28th Street	N.E. 187th Avenue	Vancouver City Limits (N.E. 18th Street)	N.E. 172nd Avenue
699	Vancouver City Limits	Lacamas Creek N.E. 187th Avenue extended N.E. 187th Avenue	N.E. 28th Street N.E. 182nd Avenue N.E. Edmunds Drive N.E. 39th Street	N.E. 164th Ave N.E. 43rd Street N.E. 162nd Avenue
700	N.E. 13th Street	Camas City Limits N.W. Friberg-Strunk Sgreet	Vancouver City Limits N.E. 5th Street	N.E. 192nd Avenue
701	Vancouver City Limits	Lacamas Creek N.E. Goodwin Road	N.E. 13th Street Vancouver City Limits (N.E. 192nd Avenue) (N.E. 18th Street)	N.E. 187th Avenue N.E. 187th Avenue Extended
702	N.E. 34th Street	N.E. 162nd Avenue	N.E. 28th Street	N.E. 148th Avenue
705	NE 78th Street	City of Vancouver Boundary	City of Vancouver Boundary NE 58th Street	NE 162nd Avenue
710	N.E. 28th Street	N.E. 124th Avenue N.E. 22nd Street N.E. 126th Avenue	N.E. 18th Street	N.E. Four Seasons Lane
715	Burnt Bridge Creek	N.E. 137th Avenue	N.E. 49th Street	N.E. 122nd Avenue N.E. 121st Avenue
720	N.E. 39th Street N.E. Edmunds Road	N.E. 182nd Avenue	N.E. 29th Street N.E. 172nd Avenue N.E. 32nd Street N.E. 171st Avenue N.E. 31st Way N.E. 168th Avenue N.E. 32nd Street N.E. 166th Avenue N.E. 35th Street N.E. 165th Avenue N.E. 33rd Street N.E. 163rd Avenue N.E. 34th Street	N.E. 162nd Avenue
721	N.E. 137th Avenue	N.E. 88th Street N.E. 145th Avenue N.E. 87th Street N.E. 152nd Avenue N.E. 85th Street N.E. 153rd Avenue N.E. 86th Street N.E. 156th Avenue N.E. 85th Street	N.E. 160th Avenue	N.E. Ward Rd Padden Expressway State Route 500
722	S.D. # 119/98 Boundary	S.D. # 119/98 Boundary	NE 99th Street	NE 157th Avenue NE 105th Street 17/18 Legislative Boundary NE 152nd Avenue

PRECINCT	NORTH	EAST	SOUTH	WEST
725	N.W. 38th Avenue	City of Vancouver / Camas Boundary	City of Vancouver /Camas Boundary S.E. 192nd Avenue	S.E. 192nd Avenue S.D. # 114/117 Boundary
730	S.E. Mill Plain Blvd.	S.E. 192nd Avenue	S.E. 15th Street	S.E. 164th Avenue Tech Center Drive S.E. 172nd Avenue
735	N.E. 7th Street	Midline between N.E. 152nd Avenue & N.E. 153rd Avenue S.E. 1st Street S.E. 155th Avenue	S.E. Mill Plain Blvd.	NE 136th Ave NE 4th St SE 1st Street S.E. Hearthwood Blvd. N.E. 144th Avenue
740	S.E. 34th Street	S.E. Hiddenbrook Drive S.E. 180th Avenue	S.E. 39th Street S.E. 179th Avenue S.E. 38th Street S.E. 177th Avenue S.E. Fisher Drive S.E. 172nd Avenue S.E. 39th Street	S.E. 164th Avenue
745	N.E. 28th Street	N.E. 162nd Avenue N.E. 23rd Street N.E. 163rd Avenue Vancouver City Limits / FD 5 Boundary N.E. 164th Avenue	N.E. 18th Street	N.E. 159th Avenue N.E. 19th Street N.E. 158th Avenue N.E. 20th Street N.E. 159th Avenue N.E. 22nd Street N.E. 158th Avenue N.E. 24th Street N.E. 159th Avenue N.E. 25th Street N.E. 26th Street N.E. 159th Avenue Ext. N.E. 27th Circle N.E. 160th Avenue
747	NE 45th Street NE 144th Avenue NE 45th Street NE 147th Avenue NE 43rd Street NE 148th Avenue NE 46th Street NE 149th Avenue NE 47th Street	N.E. 151st Avenue	N.E. 39th Street	NE 143rd Avenue
772	N.E. Allworth Road	Rock Creek	NE 219th Street	N.E. 182nd Avenue
775	NE 259th Street	N.E. 232nd Avenue Ext.	N.E. 249th Street Ext. N.E. 227th Avenue Ext N.E. 247th Street Ext. N.E. 222nd Avenue N.E. Allworth Road	N.E. Crawford Road NE 249th Street N.E. 182nd Avenue
900	Washougal River	26th Street Ext. H Street 25th Street Ext. Burlington No. R.R. 27th Street Ext.	Lewis & Clark Hwy.	Washougal River Road A Street 11th Street D Street Washougal River Road E Street 12th Street
901	Washougal City Limits	Washougal River	Washougal River	Washougal River Road Washougal City Limits
902	N. Shepherd Road N. 10th Street N. S Street N. 14th Street N. R Street Washougal City Limits	Washougal City Limits N. Washougal River Road	Washougal River	Washougal / Camas City Limits

PRECINCT	NORTH	EAST	SOUTH	WEST
903	Washougal River	12th Street E Street Washougal River Road D Street 11th Street A Street Washougal River Road Lewis & Clark Hwy. S. 27th Street S. 27th Street Ext.	Columbia River	Washougal / Camas City Limits
905	SE 23rd Street	Washougal City Limits S.D. #117 / S.D. # 112-6 N Dogwood Ct Cemetery District 1 boundary W 2nd Street N 4th Street N Lebrun Drive	Washougal City Limits	Washougal City Limits SE Crown Road Washougal City Limits
906	N Dogwood Ct Cemetery District 1 boundary Washougal City Limits S.E. 30th Street	Washougal City Limits S.E. 313th Ave.	N. Washougal River Road Washougal City Limits N. R Street N. 14th Street N. S Street N. 10th street N. Shepherd Road Washougal City Limits	N Lebrun Drive N 4th Street W 2nd Street
909	E Street Evergreen Way	Washougal City Limits	Washougal City Limits Columbia River	S. 27th Street Ext. S. 27th Street Bullington Nothern R.R. 25th Street Ext.
910	Washougal City Limits 32nd Street K Street	34th Street	Evergreen Way E Street	25th Street H Street 26th Street Ext. Washougal River
912	Y Street 34th Street X Street 36th Street W Street	39th Street J Street Fairway Drive G Street 51st Street D Street Sunset Ridge Drive Washougal City Limits	Evergreen Hwy.	34th Street K Street 32nd Street Washougal City Limits (S.E. Stiles Road)
913	Washougal City Limits	Washougal City Limits 49th Street	W Street Ext. W Street	W Street 36th Street X Street 34th Street Y Street Stiles Road
915	W Street W Street Ext. Washougal City Limits SE W Street	Washougal City Limits	southern boundary of parcel 132796000 57th Street P Street Rolling Meadows Drive M Drive M Street	39th Street
914	M Street M Drive Rolling Meadows Drive P Street	Washougal City Limits	Sunset Ridge Drive D Street 51st Street G Street Fairway Drive J Street	39th Street
917	N.E. 19th Street N.E. Blair Road	S.D. #117 / S.D. #112-6 Boundary Line	S.D. #117 / S.D. #112-6 Boundary Line Washougal City Limits	Camas City Limits
920	S.D. #117 / S.D. #114 Boundary Line	N.E. 272nd Avenue Ext. North Boundary of Census Tract No. 406.03, Block No. 3019 N.E. 59th Street N.E. 282nd Avenue N.E. 53rd Street N.E. 292nd Avenue N.E. Reilly Road	N.E. Blair Road N.E. 19th Street N.E. 267th Avenue N.E. Brunner Road	N.E. 259th Avenue N.E. 29th Street N.E. 261st Avenue N.E. 38th Street N.E. 246th Avenue N.E. 43rd Street N.E. 43rd Street Ext. Matney Creek unnamed creek N.E. Highland Meadows Drive Camp Bonneville Prop. Line

PRECINCT	NORTH	EAST	SOUTH	WEST
925	S.D. #117 / S.D. #114 Boundary Line	Camp Bonneville Prop. Line N.E. Highland Meadows Drive unnamed creek Matney Creek N.E. 43rd Street Ext. N.E. 43rd Street N.E. 246th Avenue N.E. 38th Street N.E. 261st Avenue N.E. 29th Street N.E. 259th Avenue N.E. 267th Avenue N.E. 3rd Street N.E. Everett Road	Camas City Limits	Camas City Limits S.D. #117 / S.D. #114 Boundary Line
930	S.D. #98 / S.D. #119 Boundary Line	Clark / Skamania County Boundary Line	S.D. #117 / S.D. #112-6 Boundary Line	N.E. Reilly Road N.E. 292nd Avenue N.E. 53rd Street N.E. 282nd Avenue N.E. 59th Street North Boundary of Census Tract No. 406.03, Block No. 3019 N.E. 272nd Avenue Ext.
935	N.E. Blair Road N.E. Zeek Road N.E. 10th Street N.E. 312th Avenue S.E. 312th Avenue S.E. Coffey Road S.E. 17th Street Washougal River Road	N.E. Vernon Road S.E. Vernon Road S.E. 357th Avenue S.E. 20th Street S.E. 362nd Avenue S.E. St. Clair Road	W Street Washougal City Limits	S.D. #112-6 / S.D. #117 Boundary Line
940	S.D. #112-6 / S.D. #117 Boundary	Clark / Skamania County Boundary Line	Washougal River Road S.E. 17th Street	S.E. Coffey Road S.E. 312th Avenue N.E. 312th Avenue N.E. 10th Street N.E. Zeek Road N.E. Blair Road
947	S.E. Vernon Road N.E. Vernon Road Washougal River Road	Clark / Skamania County Boundary Line	Columbia River (Clark County Boundary Line)	Washougal City Limits W Street S.E. St. Clair Road S.E. 362nd Avenue S.E. 20th Street S.E. 357th Avenue
950	N.W. Osterson Canyon Road N.W. 18th Avenue	N.W. Benton Street N.W. 16th Avenue N.W. Benton Street N.W. Drake Street N.W. 7th Avenue N.W. Ash Street	N.W. 6th Avenue	City of Camas Council Ward 1/3 Boundary Line
951	Camas-Ward No. 1 / Ward No. 2 2009 Boundary (N.W. 18th Avenue) (Division Street (N.E. 19th Street) (N.E. Everett Street) Camas City Limits	Camas City Limits	N.E. 3rd Avenue	N.E. Adams Street N.E. 6th Avenue N.W. 6th Avenue N.W. Ash Street N.W. 7th Avenue N.W. Drake Street N.W. Benton Street
952	Lewis & Clark Highway N.W. 6th Avenue	N.E. Adams Street N.E. Adams Street Ext.	Columbia River (Camas City Limits) (Clark County Boundary Line)	Camas City Limits City of Camas Council Ward 1/3 Boundary Line
953	NE 38th Aveune NE Hayes St NE 43rd Avenue SE 15th Street Camas City Limits	Camas City Limits	Camas City Limits	SR 500
954	Camas City Limits	Se 283rd Ave SE Crown Road	SE 15th Street NE 43rd Avenue NE Hayes St NE 38th Avenue	SR 500 NE 43rd Avenue NE Everett Drive

PRECINCT	NORTH	EAST	SOUTH	WEST
956	N.W. 38th Avenue	N.W. Dahlia Drive N.W. 37th Ave N.W. Endicott Street N.W. Pacific Rim Drive N.W. Julia Street N.W. 26th Ave N.W. Maryland Street	N.W. 24th Avenue	N.W. Parker Street
957	Camas City Limits	Camas City Limits S.E. Evergreen Highway (Camas City Limits) Camas City Limits	Columbia River (Clark/Cowlitz Co. Boundary)	Vancouver City Limits
958	N.W. Pacific Rim Boulevard	S.E. Payne Road Camas City Limits	Vancouver City Limits	Vancouver City Limits (S.E. 192nd Avenue) Vancouver City Limits
959	Vancouver City Limits	Camas City Limits	N.W. 38th Avenue (S.E. 20th Street) Camas City Limits S.E. 202nd Avenue S.D. #114 Boundary Line (S.D. #117 Boundary Line) Camas City Limits S.E. Bybee Road	Vancouver City Limits
960	N.W. 24th Avenue N.W. Maryland Street N.W. 26th Ave N.W. Julia Street N.W. Pacific Rim Drive N.W. Endicott Street N.W. 37th Ave	N.W. Dahlia Drive N.W. 31st Avenue N.W. Gravenstein Street N.W. 29th Avenue N.W. Astor Street Ext. N.W. Astor Street	N.W. 23rd Avenue N.W. Hood Street N.W. 16th Avenue	N.W. Parker Street
961	S.E. Bybee Road Camas City Limits S.E. 20th Street N.W. 38th Avenue	N.W. Parker Street N.W. Brady Road N.W. 16th Avenue N.W. Tidland Street N.W. 18th Avenue N.W. Whitman Street	Camas City Limits	Vancouver City Limits
962	Camas City Limits	Camas City Limits Camas-Ward No. 1 / Ward No. 2 2012 Boundary (N.E. Everett Drive) (N.E. Everett Street)	N.E. Everett Street N.W. Lake Road N.W. Lacamas Lane N.W. 35th Avenue N.W. Maple Street N.W. 34th Avenue N.W. Norwood Street N.W. 32nd Avenue N.W. Kent Street N.W. 28th Avenue	N.W. Sierra Drive N.W. Sierra Drive Ext. Lacamas Lake Camas City Limits
963	N.W. 35th Avenue N.W. Lacamas Lane N.W. Lake Road	Camas-Ward No. 2 / Ward No. 1 2009 Boundary (N.E. Everett Street)	Camas-Ward No. 2 / Ward No. 1 2009 Boundary (N.E. 19th Avenue) (N. Division Street) (N.W. 18th Street) (N.W. 18th Loop)	N.W. 18th Loop N.W. Fargo Street N.W. Kent Street N.W. 32nd Avenue N.W. Norwood Street N.W. 34th Avenue N.W. Maple Street
964	NW Leadbetter Drive N.W. Lake Road	N.W. Sierra Drive Ext. N.W. 44th Avenue N.W. Oregon Street N.W. 43rd Avenue N.W. Sierra Drive	Camas-Ward No. 2 / Ward No. 3 2009 Boundary	N.W. Parker Street
965	N.W. 18th Avenue N.W. Tidland Street N.W. 16th Avenue N.W. Klickitat Street N.W. McIntosh Road N.W. 11th Avenue N.W. Astor Street N.W. Forest Home Road	Camas-Ward No. 3 / Ward No. 1 2009 Boundary	Camas-Ward No. 3 / Ward No. 1 2009 Boundary Camas City Limits	Camas City Limits N.W. Highpoint Drive N.W. Whitman Street
966	Lacamas Creek Camas City Limits	Camas City Limits Lacamas Lake	N.W. Sierra Drive Ext. N.W. Lake Road NW Leadbetter Drive N.W. Parker Street N.W. 38th Avenue	Camas City Limits S.E. 202nd Court Ext. S.E. 202nd Court N.W. Friberg Strunk Street N.E. 9th Street Ext. Camas City Limits N.E. Goodwin Road



PRECINCT	NORTH	EAST	SOUTH	WEST
967	N.W. 16th Avenue N.W. Hood Street N.W. 23rd Avenue	N.W. Astor Street	N.W. 11th Avenue N.W. McIntosh Road	N.W. Klickitat Street
968	Camas-Ward No. 3 / Ward No. 2 2009 Boundary	Camas-Ward No. 3 / Ward No. 2 2009 Boundary Camas-Ward No. 3 / Ward No. 1 2009 Boundary	N.W. Forest Home Road	N.W. Astor N.W. Astor Ext. N.W. 29th Avenue N.W. Gravenstein Street N.W. 31st Avenue N.W. Dahlia Drive
969	N.W. 28th Avenue	N.W. Fargo Street N.W. 18th Loop	Camas-Ward No. 2 / Ward No. 3 2009 Boundary	N.W. Sierra Street
970	Camas City Limits	Camas City Limits	Lacamas Creek	Camas City Limits N.E. Ingle Road Camas City Limits
980	Washougal River N.E. 3rd Avenue / E Street N.E. Weir Street N.E. 4th Ave	N.E. 4th Avenue N.E. Lechner Street S.E. Lechner Street 6th Street	(Camas City Limits) (Clark County Boundary Line) Columbia River	N.E. Adams Street Ext. SR - 14 S.E. Polk St SR 500
985	N.E. 3rd Avenue Camas City Limits Camas / Washougal City Limits	Camas / Washougal City Limits	Washougal River S.R. 500 S.E. Polk Street Hwy. 14	N.E. Adams Street Ext. N.E. Adams Street

Rev. 11/2023

# EXHIBIT B

## PRECINCTS BY COUNTY COUNCIL DISTRICT

Effective November 28, 2023

COUNCIL DISTRICT NO. 1		COUNCIL DISTRICT NO. 2		COUNCIL DISTRICT NO. 3		COUNCIL DISTRICT NO. 4		COUNCIL DISTRICT NO. 5	
100	220	112	445	320	669	604	906	485	558
101	225	296	446	571	672	610	909	490	559
102	240	298	447	601	674	611	910	491	562
104	245	325	448	619	676	613	912	492	564
106	250	327	449	621	677	614	913	<b>499**</b>	568
108	255	328	450	622	678	615	914	500	569
109	257	330	451	623	679	616	915	501	570
110	258	331	452	624	680	617	917	502	572
113	260	335	453	626	681	618	920	503	573
120	290	336	454	627	682	620	925	504	574
125	294	338	455	628	683	625	930	505	575
130	295	339	456	630	684	629	935	506	576
135	337	360	457	633	685	631	940	507	577
147	340	365	458	634	686	637	947	508	578
150	350	370	460	635	687	641	950	509	579
153	390	371	461	636	688	644	951	510	580
160	395	391	470	640	689	645	952	511	581
161	400	392	479	643	691	646	953	512	582
170	639	410	480	652	692	647	954	513	583
171	650	415	481	653	693	648	956	514	584
173	651	420	482	654	694	649	957	515	585
175	660	423	483	656	695	655	958	516	586
177	663	424	484	657	697	690	959	<b>517**</b>	587
180	670	425	487	658	702	696	960	520	588
185	671	426	553	659	705	698	961	521	589
190	673	427	<b>551**</b>	661	710	699	962	522	590
195	675	430	556	662	715	700	963	523	591
200		432	560	664	721	701	964	524	592
		434	561	665	735	720	965	525	593
		435	563	667	745	725	966	527	594
		436	565	668	747	730	967	528	595
		440	566			740	968	530	596
		441	567			900	969	534	597
		442	632			901	970	535	598
		443	638			902	980	536	599
		444	642			903	985	537	600
						905		538	602
								540	603
								541	605
								543	606
								544	607
								545	608
								550	612
								552	722
								554	772
								555	775
								557	

Asterisks and bolded denotes added precinct

**EXHIBIT - C**

**PRECINCT CHANGES - 2024**

**# Change**

PRECINCTS WHERE VOTERS WERE SHIFTED IN 2023				
TO PRECINCT	FROM PRECINCT (A)	FROM PRECINCT (B)	FROM PRECINCT (C)	REASON FOR CHANGE
901 (0)	935 (0)			City of Washougal Annex - Gesler Ordinance No. 1970
NEW 517 (0)	485 (0)			City of Ridgefield Annex - KDev Ordinance No. 1367
NEW 551 (2)	566 (2)			City of Vancouver Annex - Larson Ordinance No. M-4414
600 (0)	605 (0)			Town of Yacolt Annex - Keller Ordinance No. 592
962 (20)	917 (20)			City of Camas Annex - HSR Capital Ordinance No. 23-008
NEW 499 (550)	503(550)			Precinct 503 - over 1500 active voter limit
110 (160)	120 (160)			Precinct 120 - over 1500 active voter limit

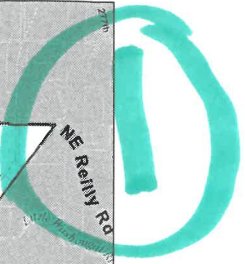
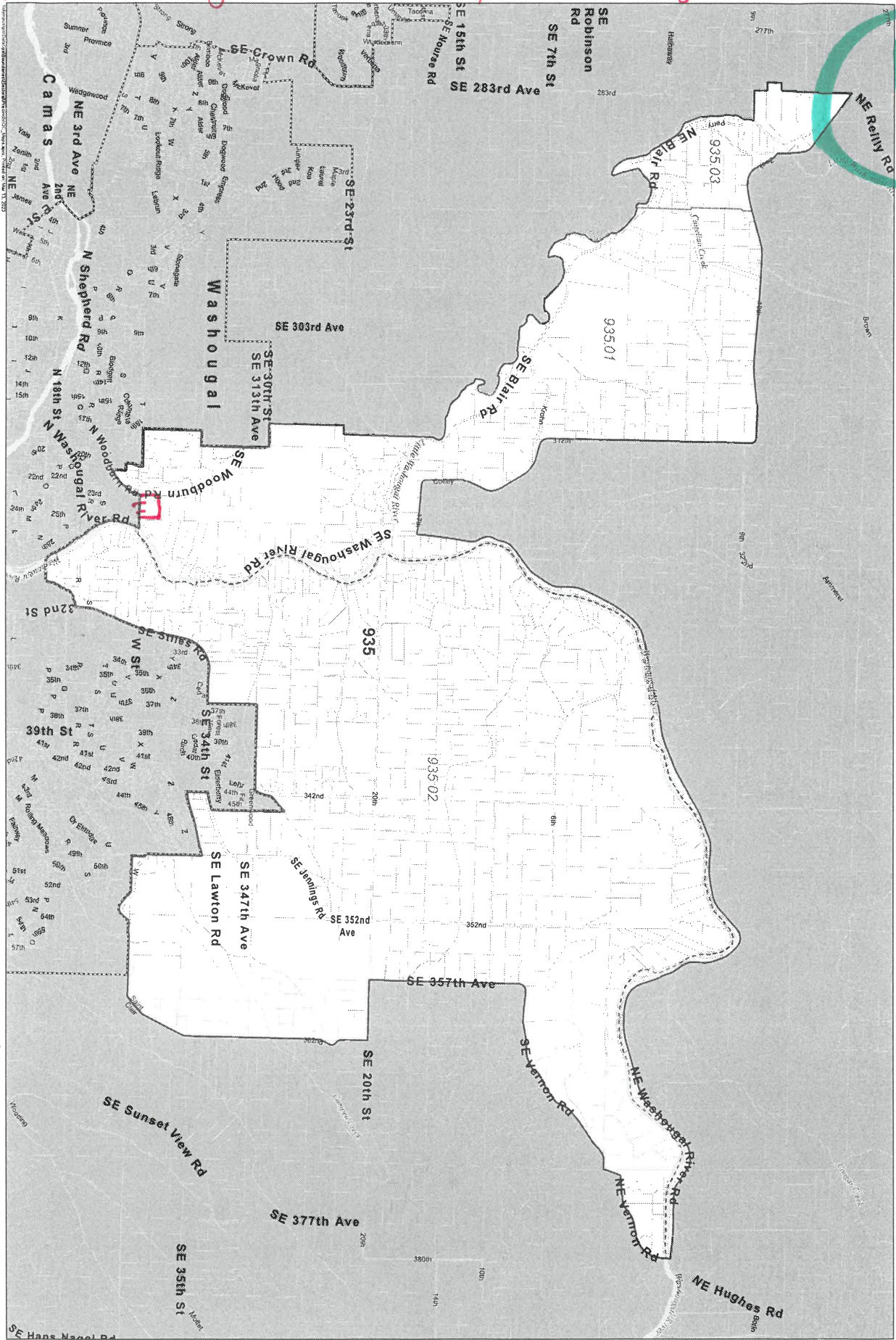
NEW PRECINCTS CREATED IN 2024				
NEW NUMBER	FROM PRECINCT (A)	FROM PRECINCT (B)	FROM PRECINCT (C)	REASON FOR CHANGE
NEW 517 (0)	485 (0)			City of Ridgefield Annex - Kdev Ordinance No. 1367
NEW 551 (2)	566 (2)			City of Vancouver Annex - Larson Ordinance No. M-4414
NEW 499 (550)	503(550)			Precinct 503 - over 1500 active voter limit

PRECINCTS AND/OR PORTIONS WHERE VOTERS WERE SHIFTED IN 2024 DUE TO ANNEXATIONS / TRANSFERS				
TO PRECINCT	FROM PRECINCT			REASON FOR CHANGE
901 (0)	935 (0)			City of Washougal Annex - Gesler Ordinance No. 1970
NEW 517 (0)	485 (0)			City of Ridgefield Annex - Kdev Ordinance No. 1367
NEW 551 (2)	566 (2)			City of Vancouver Annex - Larson Ordinance No. M-4414
600 (0)	605 (0)			Town of Yacolt Annex - Keller Ordinance No. 592
962 (20)	917 (20)			City of Camas Annex - HSR Capital Ordinance No. 23-008

## EXHIBIT D

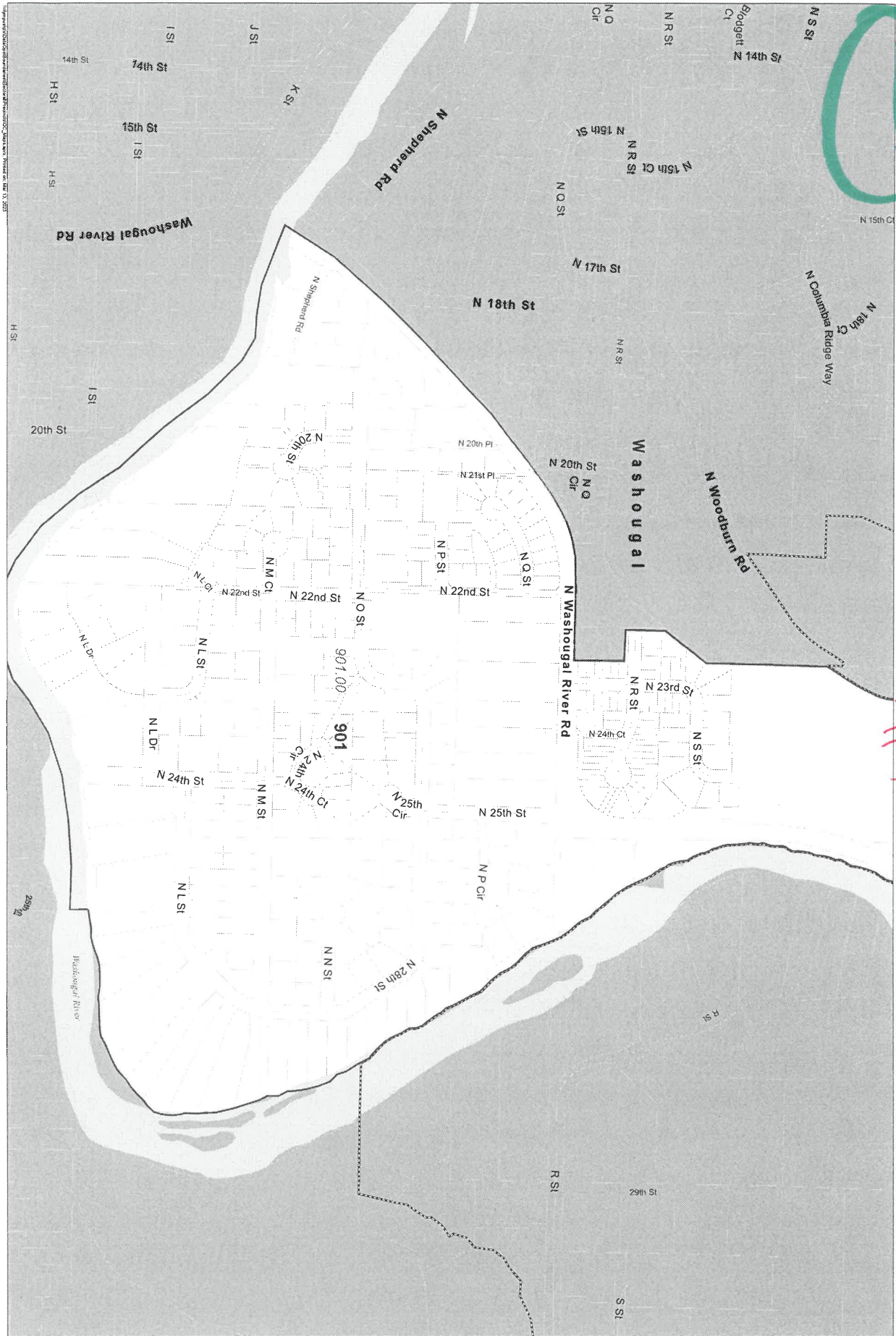
Because the map being submitted with this resolution is a poster-sized draft, pending Board of County Council approval, only one copy is being submitted with the master copy of this staff report and resolution. Please refer to the map included with the master copy.

A Parcel of 935 joins 901 = City of Washougal Annex = Gesler



Precinct QC  
**935**

**KEY**  
▭ Precinct  
▭ Portion  
▭ Incorporated Area



**KEY**  
 ■ Precinct  
 --- Portion  
 --- Incorporated Area

**Precinct QC  
 901**

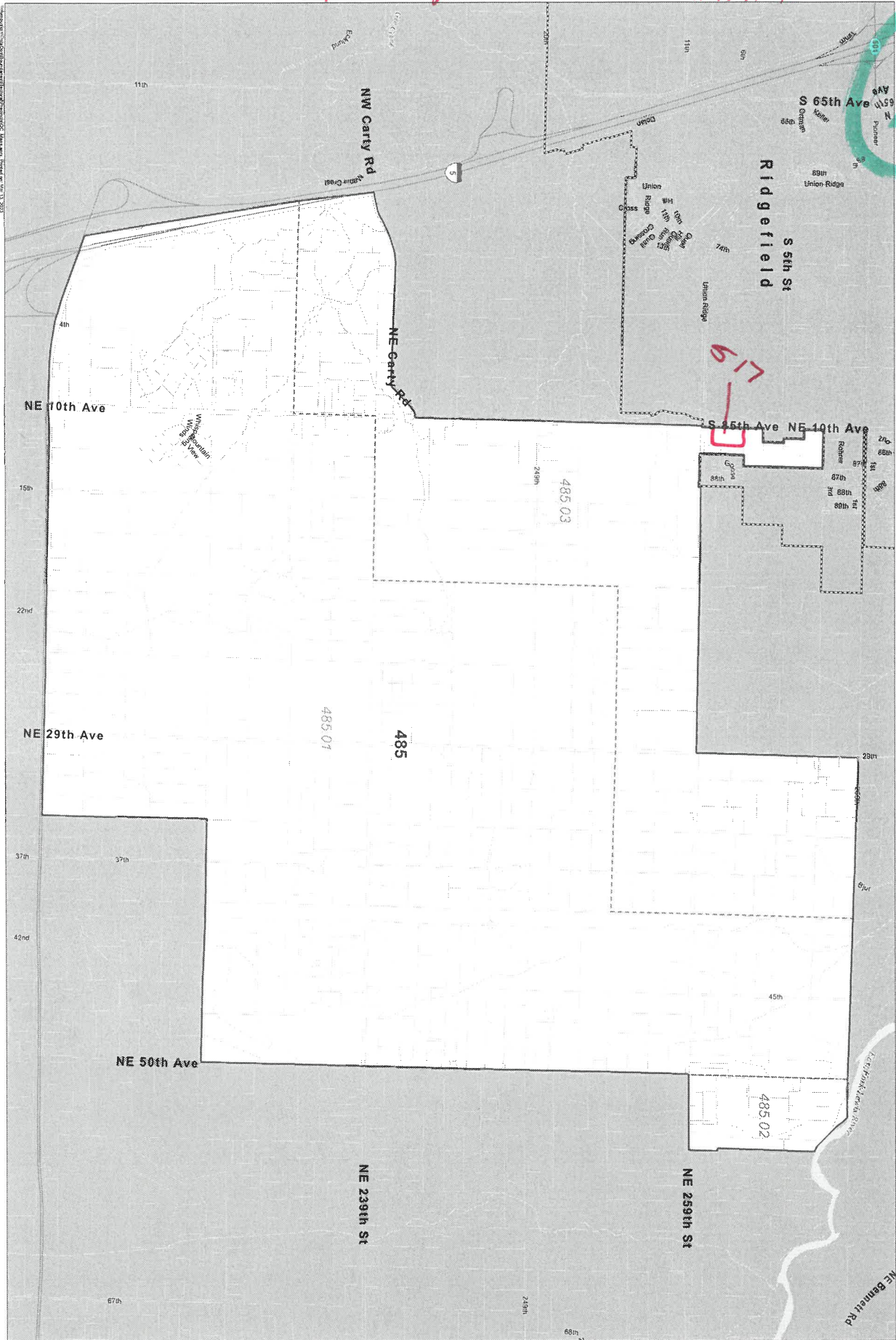


Locator

Create New 517 · City of Ridgefield · KDEV ANNEX

2 voters

2

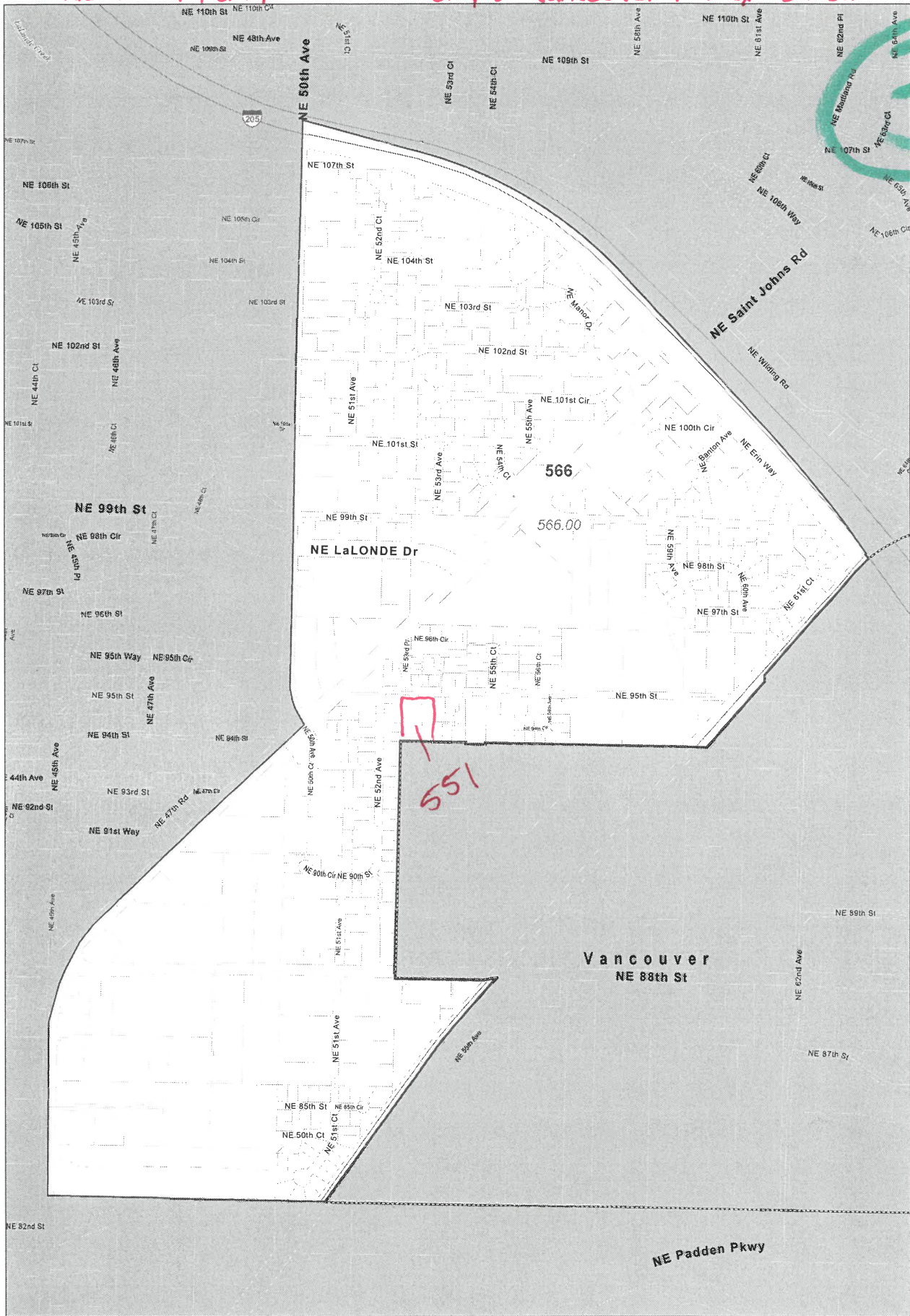


Locator

Precinct QC  
485

- KEY
- ▭ Precinct
- ▭ Portion
- ▭ Incorporated Area

create NEW 551 from part of 566. City of Vancouver Annex - Larson 2 voters



- KEY
- Precinct
  - Portion
  - Incorporated Area

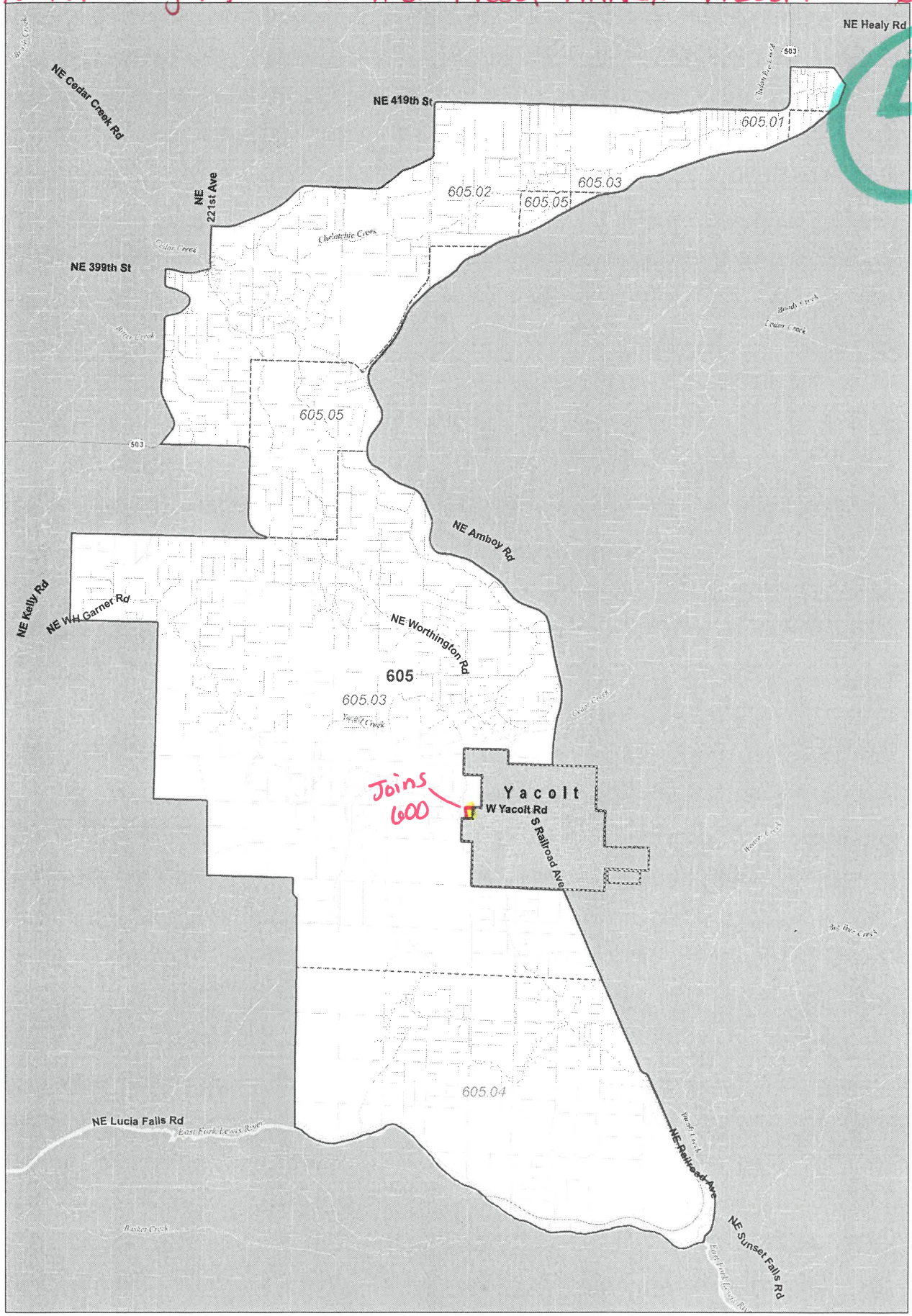
Precinct QC  
**566**





Part of 605 joins 600. TOWN OF YACOLT ANNEX - KELLER & VOTERS

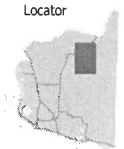
4



**KEY**

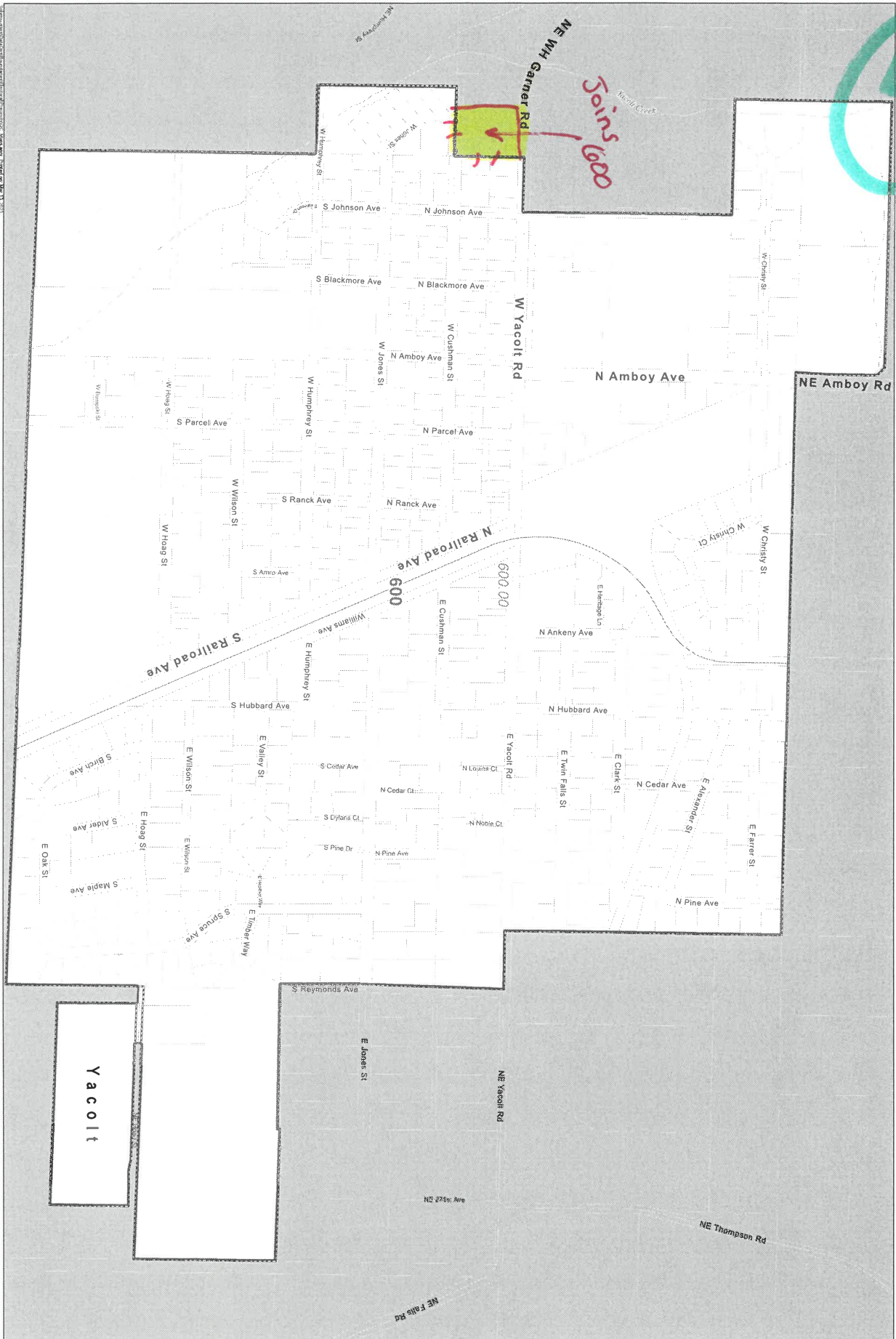
- Precinct
- Portion
- Incorporated Area

Precinct QC  
**605**



\\smp\pgrs\GISData\Output\Boundaries\Elector\Precinct\QC\_Maps.aprx, Printed on: Mar 15, 2023

4



Locator

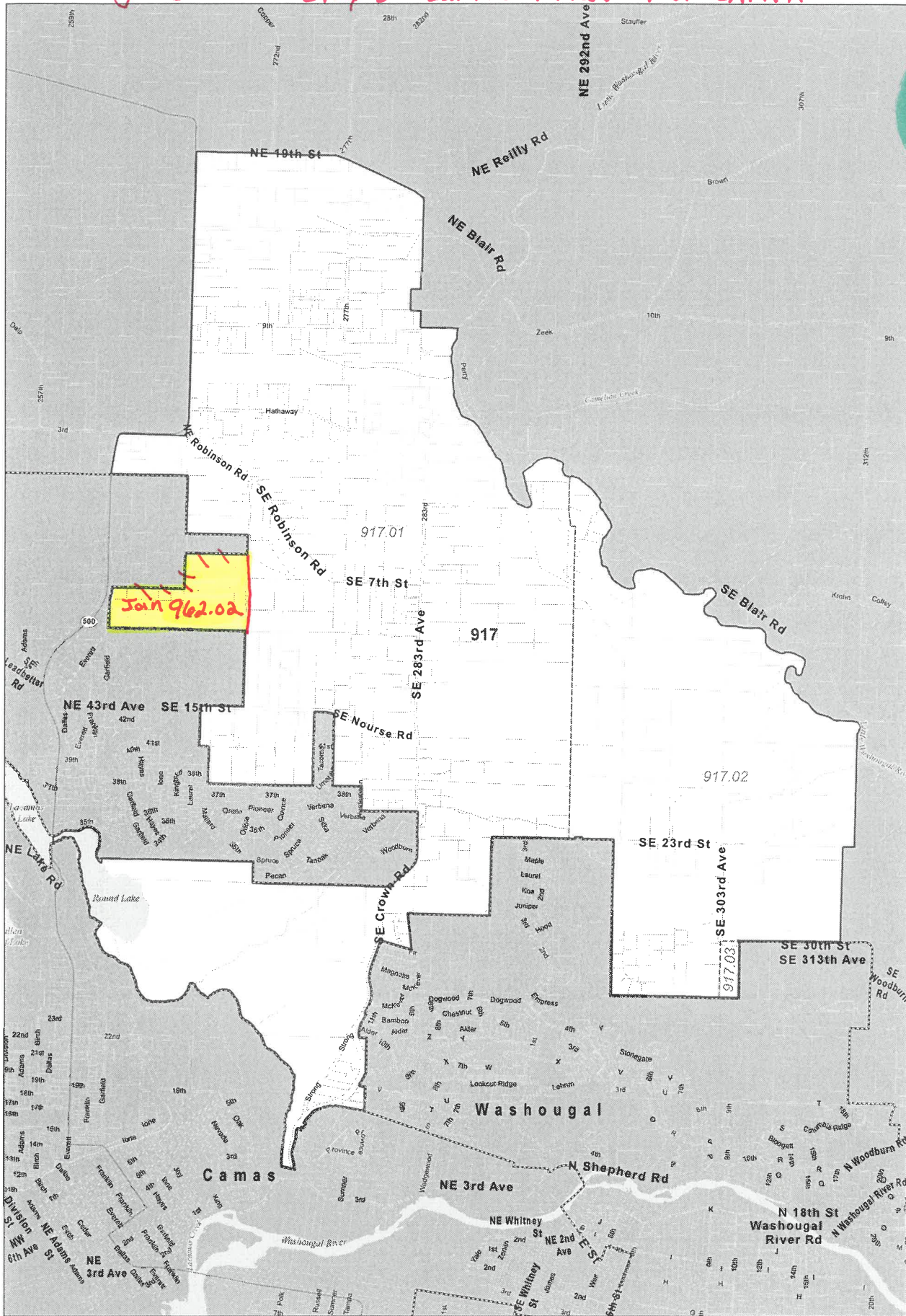
Precinct QC  
600

**KEY**

- Precinct
- Portion
- Incorporated Area

Part of 917 joins 962: city of camas Annex HSR CAPITAL - 20 voters

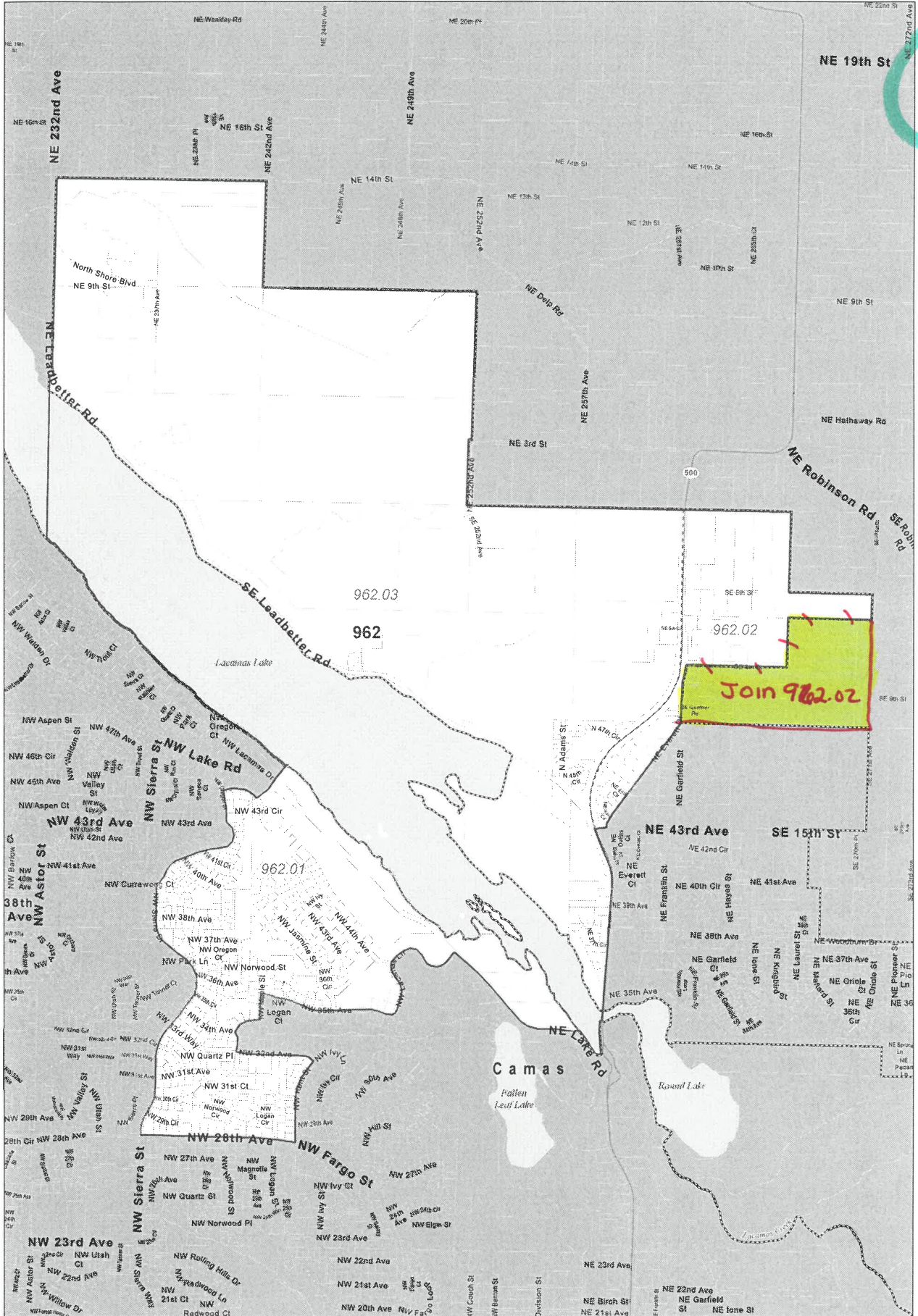
5



KEY  
 [Solid Line] Precinct  
 [Dashed Line] Portion  
 [Dotted Line] Incorporated Area

Precinct QC  
**917**





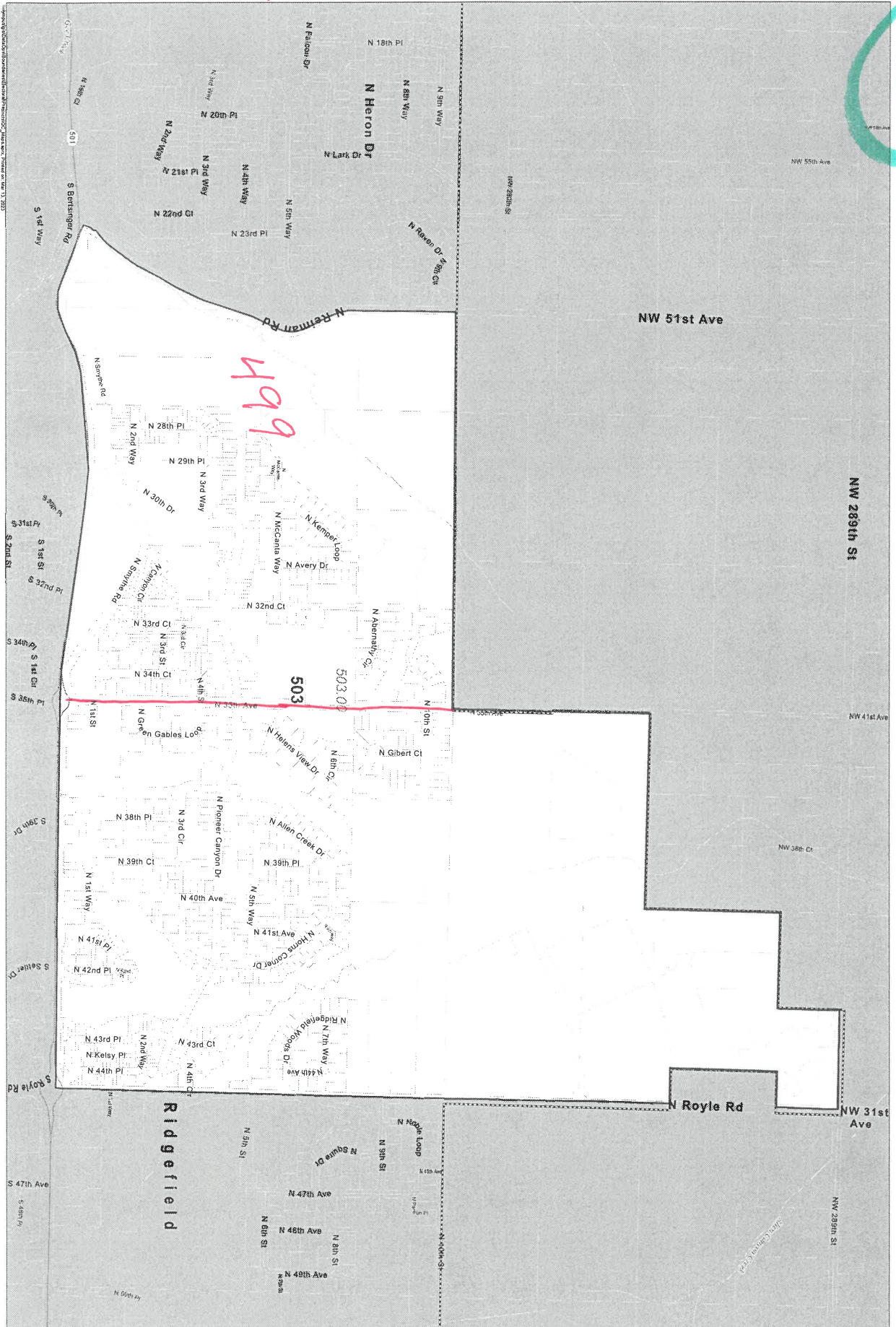
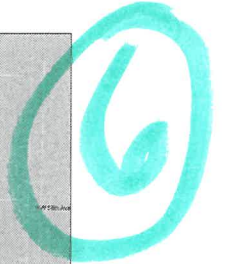
- KEY**
- Precinct
  - Portion
  - Incorporated Area

Precinct QC  
**962**



Create NEW 499 from part of 503

550 voters



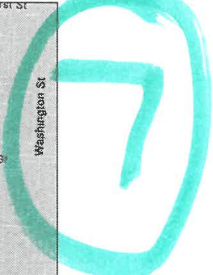
Precinct QC  
**503**

KEY  
Precinct  
Portion  
Incorporated Area



Part of 120 joins 110

160 voters



- KEY**
- Precinct
  - Portion
  - Incorporated Area

Precinct QC  
**120**



**ORDINANCE NO. \_\_\_\_\_**

AN ORDINANCE relating to precinct boundaries; amending CCC Section 2.12.020.

1           WHEREAS, RCW 29A.16.050 requires that every voting precinct must be wholly within a single  
2 congressional district, a single legislative district, a single district of a county legislative authority, and, if  
3 applicable, a city; and

4           WHEREAS, adjusting eight existing voting precincts and adding two new voting precincts will bring  
5 precincts into compliance with RCW 29A.16.050; and

6           WHEREAS, RCW 29A.16.040 requires limiting election precinct sizes to 1500 active registered  
7 voters or less; and

8           WHEREAS in Clark County there are two precincts that are over, or very close to the 1500 limit; and

9           WHEREAS adjusting three existing voting precincts and creating one new voting precinct will bring  
10 Clark County into compliance with 29A.16.040; and

11           WHEREAS, the Board finds that the following revisions to Chapter 2.12.020 CCC, relating to voting  
12 precincts are in the public interest; now, therefore,

13           BE IT ORDERED AND RESOLVED BY THE BOARD OF COUNTY COUNCILORS OF CLARK  
14 COUNTY, STATE OF WASHINGTON, as follows:

15           **Section 1. Amended.** Section 2.12.020 of the Clark County Code is amended to the Clark County  
16 Code to read as follows:

17           **Section 2.12.020 Precinct Boundaries.**

18           The auditor is authorized to implement precinct boundary changes as required to bring the precincts  
19 into compliance with RCW 29A. The new precinct boundaries and corresponding map are attached and  
20 incorporated by reference as Exhibit A, Exhibit B, Exhibit C and Exhibit D, which are on file and available for  
21 public inspection at the Elections Division of the Clark County Auditor’s office.

22           **Section 2. Effective Date.** This ordinance shall take effect on November \_\_\_\_, 2023.

23

24

25 **Section 3. Instructions to the clerk.** The Clerk to the Board shall:  
26 1. Record a copy of this ordinance with the Clark County Auditor.  
27 2. Cause notice of adoption of this ordinance to be published forthwith pursuant to RCW  
28 36.70A.290.  
29 3. Transmit a copy of this ordinance to Code Publishing, Inc., to update the electronic  
30 version of the Clark County Code.  
31 Pursuant to RCW 36.70A.106, this Ordinance shall be transmitted to the Washington State  
32 Department of Commerce, as required by law.

ADOPTED on this \_\_\_\_\_ day of \_\_\_\_\_, 2023.

COUNTY COUNCIL  
CLARK COUNTY, WASHINGTON

Attest:

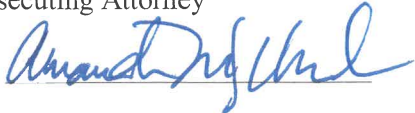
\_\_\_\_\_  
Clerk to the Council

By: \_\_\_\_\_  
Karen Dill Bowerman, Chair

By: \_\_\_\_\_  
Glen Yung, Councilor

By: \_\_\_\_\_  
Michelle Belkot, Councilor

Approved as to Form Only:  
Anthony F. Golik  
Prosecuting Attorney

By: 

By: \_\_\_\_\_  
Gary Medvigy, Councilor

By: \_\_\_\_\_  
Sue Marshall, Councilor