

# Clark County Public Health STI HIV Prevention Program

---

Rachel Vinson, BSN, RN  
Program Manager II  
STI HIV Prevention Program  
Clark County Public Health

April 24, 2024



# Presentation objectives

---

- Discuss purpose and importance of STI and HIV surveillance activities
- Review surveillance data and trends
- Shared understanding of the comprehensive STI and HIV prevention services provided by Clark County Public Health
- Highlight community partnerships



# STI and HIV surveillance

---

- Public health surveillance includes reporting, investigation, collection, and distribution of data about illness and death.
- STI and HIV surveillance data directs the implementation of programmatic activities to help control and prevent the spread of infection or virus.



# Reporting notifiable conditions

- Health care providers, facilities, laboratories, food service establishments, child care facilities, and schools are **legally required** to notify CCPH of suspected or confirmed cases of selected diseases or conditions.
- Resources for providers** are available on the CCPH website.

**Washington State Department of HEALTH**

**Notifiable Conditions**  
**HEALTH CARE PROVIDERS/FACILITIES**

Notifiable to the local health jurisdiction (LHJ) of the patient's residence unless otherwise designated  
 (If unable to reach the LHJ of the patient's residence, please call: 1-877-539-4344  
 (If patient residence is unknown, notify the LHJ of the health care provider that ordered the diagnostic test))

**IMMEDIATELY NOTIFIABLE**  
 Requires a phone call to reach a fax person at the local health jurisdiction, 24/7. **Must be reported as soon as clinically suspected.**

<ul style="list-style-type: none"> <li>1 Anisik meningitis</li> <li>2 Anthrax (Bacillus anthracis and confirmed Bacillus cereus biovar anthracis only - Do not report all Bacillus cereus)</li> <li>Botulism, foodborne, infant, and wound</li> <li>3 Cholera (Vibrio cholerae O1 or O139)</li> <li>4 Coronavirus infection (severe communicable)</li> <li>5 DAIQ-associated coronavirus</li> <li>6 SARS-associated coronavirus</li> <li>7 Novel coronavirus (COVID-19)</li> <li>Diphtheria</li> <li>8 Domestic acid poisoning</li> <li>9 E. coli (See "Shiga toxin-producing E. coli")</li> <li>10 Giardiasis (Giardia lamblia)</li> <li>11 Hemophilus influenzae (meningitis disease, children under 5 years of age)</li> <li>Influenza, novel or unidentifiable strain</li> <li>12 Measles (varicella) - Acute disease only</li> <li>13 Meningococcal disease (Meningitis)</li> <li>Meningococcal disease, invasive</li> <li>Monkeypox (Mpox)</li> </ul>	<ul style="list-style-type: none"> <li>14 Outbreaks and suspected outbreaks</li> <li>Paralytic shellfish poisoning</li> <li>15 Periodic poisoning (hospitalized, fatal, or cluster)</li> <li>1-800-222-0322</li> <li>Plague</li> <li>Poliovirus</li> <li>16 Rabies (suspect or laboratory confirmed human cases and laboratory confirmed animal cases)</li> <li>Rabies, suspected human exposure (suspected human rabies exposures due to a bite from or other exposure to an animal that is suspected of being infected with rabies)</li> <li>17 Rubella, acute disease only (including congenital rubella syndrome)</li> <li>18 Shiga toxin-producing E. coli (STEC) infections</li> <li>19 Streptococcus pyogenes (strep throat)</li> <li>20 Tetanus</li> <li>21 Tularemia</li> <li>22 Vaccinia transmission</li> <li>23 Viral hemorrhagic fever</li> <li>Yellow fever</li> </ul>
---	--

**NOTIFIABLE WITHIN 24 HOURS**  
 Requires a phone call reporting after normal public health business hours.

<ul style="list-style-type: none"> <li>24 Biphthorosis</li> <li>25 Brucellosis</li> <li>26 Candida auris infection or colonization</li> <li>27 Hantavirus infection</li> <li>28 Hepatitis A (acute infection)</li> <li>29 Hepatitis B (acute infection)*</li> <li>30 Hepatitis C (acute infection)</li> <li>31 Hepatitis C (prenatal) - Initial diagnosis, and previously unreported cases</li> <li>32 Hepatitis D (acute and chronic infection)</li> <li>33 Hepatitis E (acute infection)</li> <li>Legionellosis</li> <li>Legionnaires</li> <li>34 Listeriosis</li> <li>35 Mumps, acute disease only</li> <li>36 Pertussis</li> </ul>	<ul style="list-style-type: none"> <li>37 Pulverosis</li> <li>38 Q fever</li> <li>39 Salmonellosis</li> <li>40 Shigellosis</li> <li>41 Tuberculosis disease (confirmed or highly suspicious, i.e., initiator of empiric treatment)</li> <li>42 Varicellozoonosis (Diagnosis confirmed, not to include varicellozoonosis)</li> <li>43 Vibrios (Vibrio species not including Vibrio cholerae O1 or O139)</li> <li>44 Yersiniosis</li> <li>45 Unexplained critical illness or death</li> </ul>
--	---

**LEGEND**

- 1-6: Immediate notification required
- 7-13: Immediate notification required
- 14-36: Notification required within 24 hours
- 37-45: Notification required within 30 days

**HEALTH CARE PROVIDERS/FACILITIES**

Notified to:

- 1 Lymph disease
- 2 Lymphogranuloma venereum
- 3 Malaria
- 4 Periodic poisoning (all other)
- 5 Relapsing fever (borreliosis)
- 6 Rubella infection
- 7 Serious adverse reactions to immunizations
- 8 Syphilis
- 9 Tetanus
- 10 Tetanus
- 11 Tick paralysis
- 12 Trichinellosis
- 13 Typhus
- 14 Varicella-associated death

**NOTIFIABLE WITHIN 30 DAYS**

- 15 Birth defects (fetal alcohol, Autism spectrum disorders and Cerebral palsy)
- 16 Cancer (See [www.doh.wa.gov](http://www.doh.wa.gov))

**Facilities only**

- 17 Birth defects - Abdominal wall defects (inclusive of gastroschisis and omphalocele)
- 18 Birth defects - Down syndrome, Hypospadias and Limb reductions
- 19 Birth defects - Neural tube defects (inclusive of anencephaly and spina bifida)
- 20 Birth defects - Oral clefts (inclusive of cleft lip with/without cleft palate)
- 21 Gunshot wounds (fatal)

**For birth defects listed above, call 360-236-3533**

**Notifiable to L&I - 360-902-5609**

- 22 Adhena, occupational
- 23 Hypermotility/pneumonia, occupational
- 24 Silicosis

**L&I, Washington State Department of Labor and Industries**

**RAPID SCREENING TESTS**  
 Providers and Facilities performing blood lead level (BLL) shall report to a laboratory and comply with the requirements of WAC 246-110-201 (through 246-110-210).

**Blood lead level\*\***

- 25 BLL results (See WAC 246-110-203)
- 26 Coronavirus infection (severe communicable)
- 27 Measles (varicella) (COVID-19)
- 28 BLL results (See WAC 246-110-203)
- 29 Hepatitis C (acute infection)
- 30 BLL results (See WAC 246-110-203)
- 31 Hepatitis C (chronic infection)
- 32 BLL results (See WAC 246-110-203)
- 33 Human immunodeficiency virus (HIV) infection
- 34 BLL results (See WAC 246-110-203)

**Washington State Department of HEALTH**  
 800-225-0001 (toll free)  
 360-236-3533 (voice)  
 360-236-3534 (fax)  
 360-236-3535 (text)  
 360-236-3536 (relay)  
 360-236-3537 (voice)  
 360-236-3538 (fax)  
 360-236-3539 (text)  
 360-236-3540 (voice)  
 360-236-3541 (fax)  
 360-236-3542 (text)  
 360-236-3543 (voice)  
 360-236-3544 (fax)  
 360-236-3545 (text)  
 360-236-3546 (voice)  
 360-236-3547 (fax)  
 360-236-3548 (text)  
 360-236-3549 (voice)  
 360-236-3550 (fax)  
 360-236-3551 (text)  
 360-236-3552 (voice)  
 360-236-3553 (fax)  
 360-236-3554 (text)  
 360-236-3555 (voice)  
 360-236-3556 (fax)  
 360-236-3557 (text)  
 360-236-3558 (voice)  
 360-236-3559 (fax)  
 360-236-3560 (text)  
 360-236-3561 (voice)  
 360-236-3562 (fax)  
 360-236-3563 (text)  
 360-236-3564 (voice)  
 360-236-3565 (fax)  
 360-236-3566 (text)  
 360-236-3567 (voice)  
 360-236-3568 (fax)  
 360-236-3569 (text)  
 360-236-3570 (voice)  
 360-236-3571 (fax)  
 360-236-3572 (text)  
 360-236-3573 (voice)  
 360-236-3574 (fax)  
 360-236-3575 (text)  
 360-236-3576 (voice)  
 360-236-3577 (fax)  
 360-236-3578 (text)  
 360-236-3579 (voice)  
 360-236-3580 (fax)  
 360-236-3581 (text)  
 360-236-3582 (voice)  
 360-236-3583 (fax)  
 360-236-3584 (text)  
 360-236-3585 (voice)  
 360-236-3586 (fax)  
 360-236-3587 (text)  
 360-236-3588 (voice)  
 360-236-3589 (fax)  
 360-236-3590 (text)  
 360-236-3591 (voice)  
 360-236-3592 (fax)  
 360-236-3593 (text)  
 360-236-3594 (voice)  
 360-236-3595 (fax)  
 360-236-3596 (text)  
 360-236-3597 (voice)  
 360-236-3598 (fax)  
 360-236-3599 (text)  
 360-236-3600 (voice)

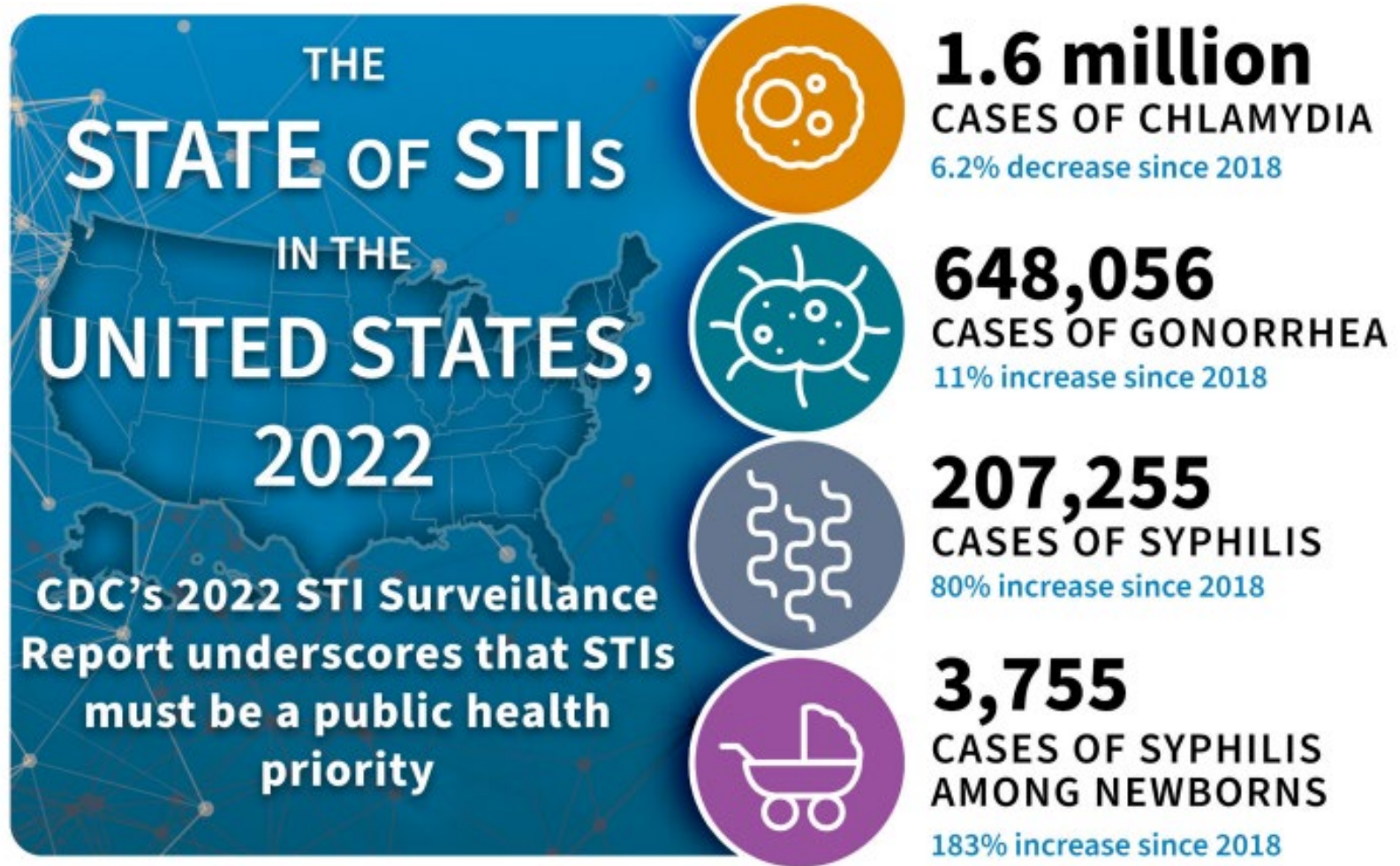


# STI HIV surveillance data

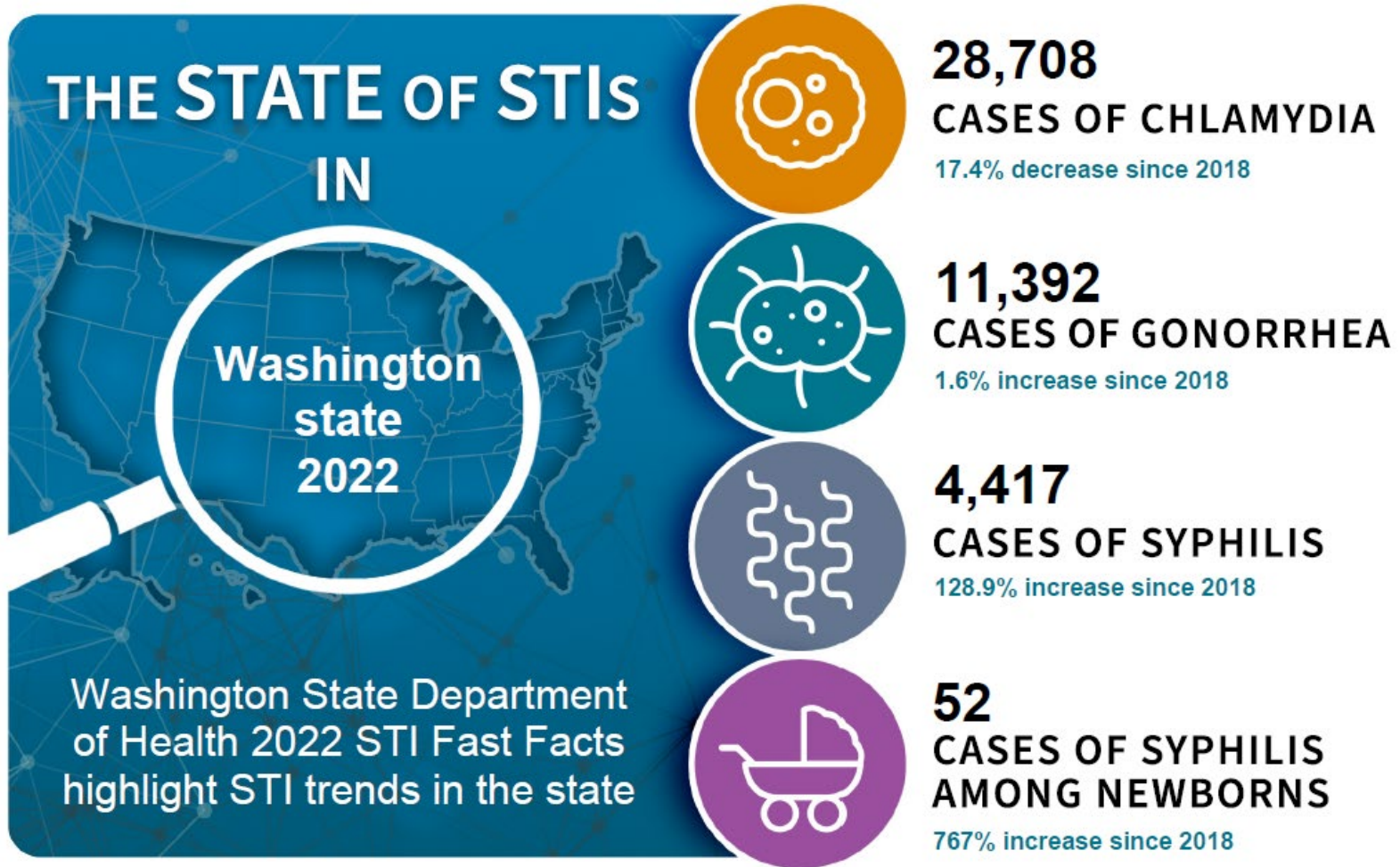
---



# National STI trends, 2022

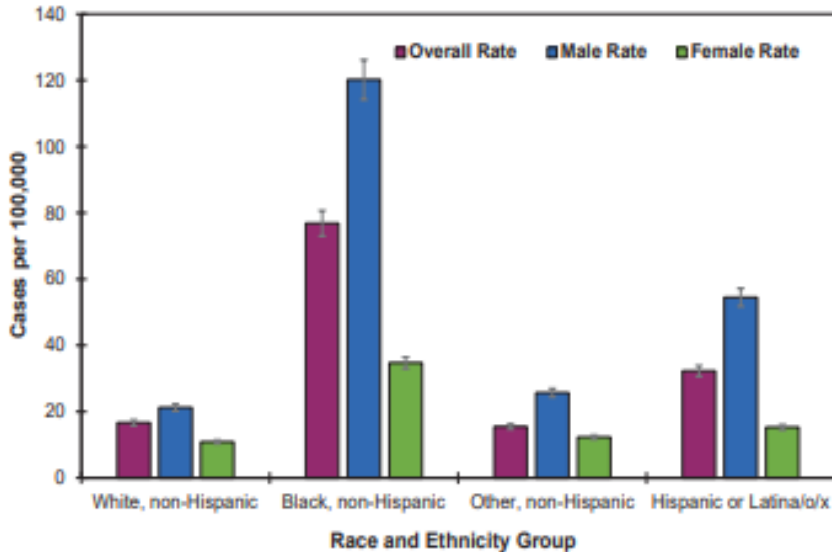


# Washington state trends, 2022

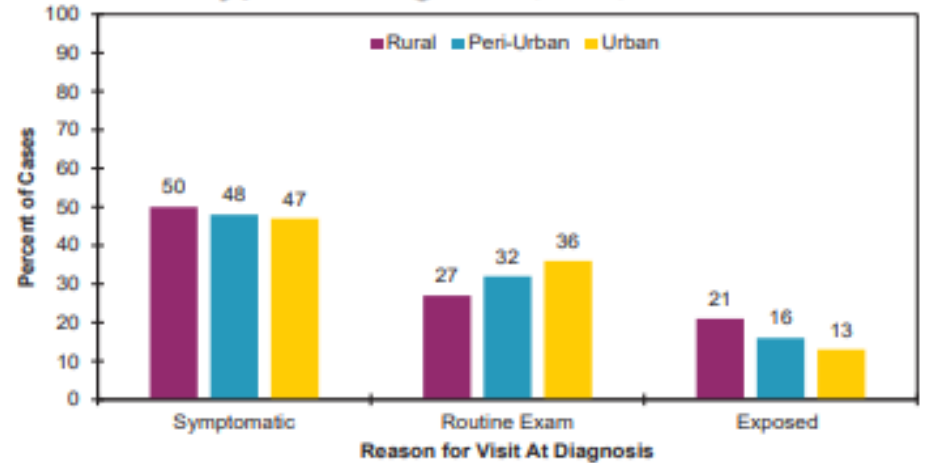


# Washington state, 2022

**Figure 12: P&S Syphilis Rates by Gender and Race and Ethnicity Group, WA State, 2022<sup>v</sup>**

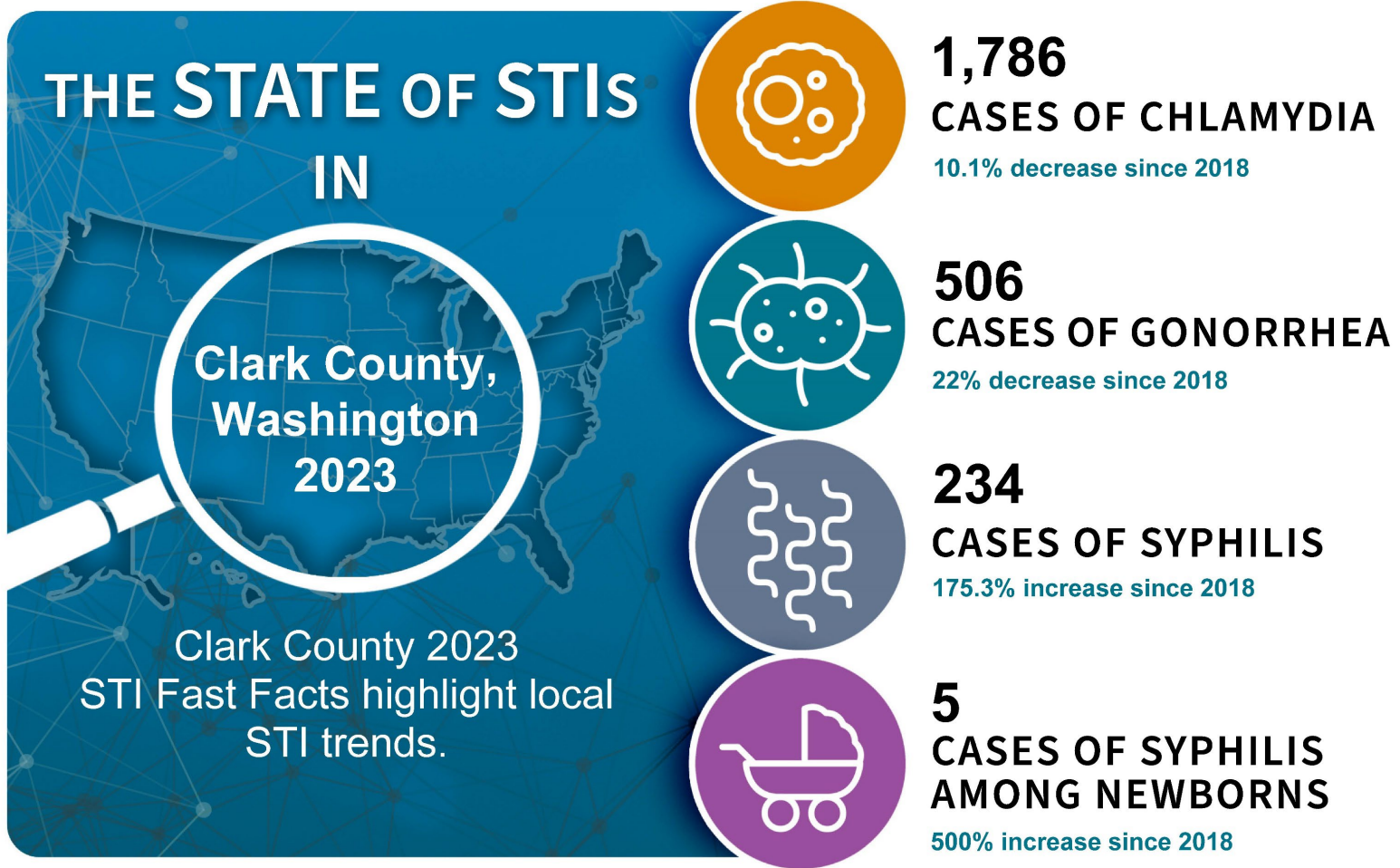


**Figure 14: Patient Reason for Provider Visit at Syphilis Diagnosis, WA, 2022**



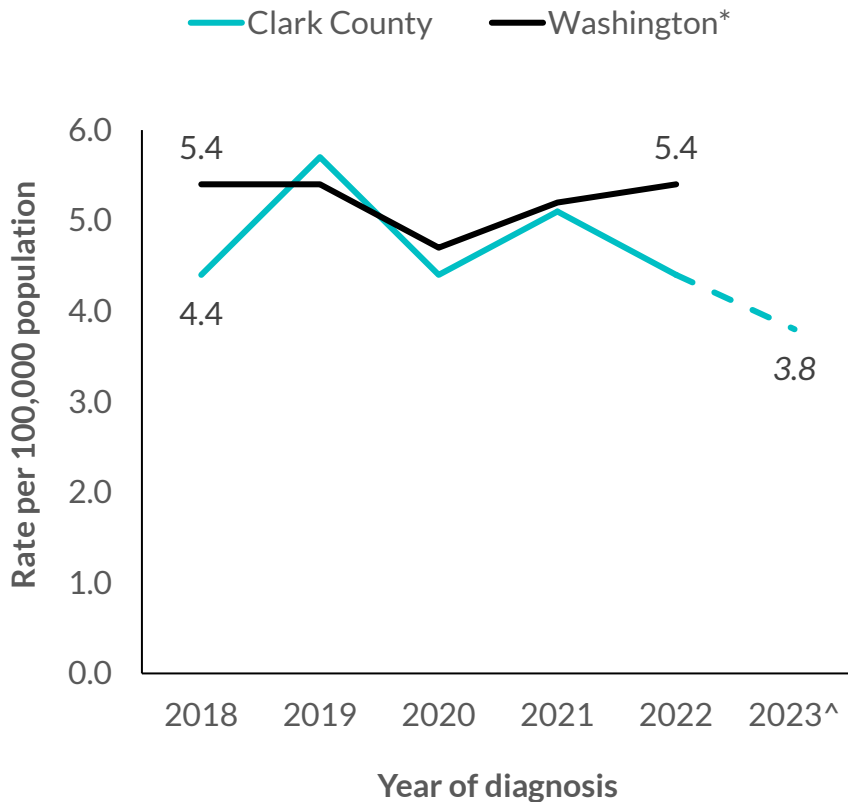


# Clark County trends, 2023



# Clark County HIV rates, 2018-2023^

## HIV rates in Clark County and Washington



## HIV trends in Clark County

Year of diagnosis	Cases	Rate	% diff from previous year	Trend
2018	21	4.4	-22.2%	↓
2019	28	5.7	+25.0%	↑
2020	22	4.4	-21.4%	↓
2021	26	5.1	+18.1%	↑
2022	26	5.0	0%	--
2023^	20	3.8	-23.1%	↓

^HIV data for 2023 are preliminary and subject to change. These data are italicized and dashed to show that they are preliminary.  
 \*State data only available through 2022



# STI and HIV prevention services

---



# STI HIV Prevention team

---

- Disease Intervention Specialist
- HIV/AIDS Specialist
- Public Health Nurse
- Epidemiologist
- Office Assistant
- Program Manager



# Preventing the spread

---



# Importance of prevention activities

---

Congenital and maternal syphilis can result in serious health consequences for the newborn which include:

- Miscarriage
- Stillbirth
- Prematurity
- Low birth weight
- Death shortly after birth



# Prevention activities

---

## Supporting our community providers:

- Supplying Bicillin to community providers
- Education on treatment and reporting guidelines
- Connecting patients to providers for care and treatment



## Additional prevention activities

---

The STI HIV Prevention Program also provides:

- Testing for gonorrhea, chlamydia, syphilis, HIV and hepatitis C
- Treatment for gonorrhea and chlamydia
- Linking to care for syphilis
- Telehealth and at-home test kits
- Health education





# Importance of community partnerships

---

Some of our community partnerships include:

- Oregon AIDS Education and Training Center
- The Free Clinic of Southwest Washington
- Sea Mar Community Health Centers
- Columbia River Mental Health Services
- Cascade AIDS Project SW WA



# Thank you!

For more information:

[www.clark.wa.gov/public-health/sexually-transmitted-diseases-std](http://www.clark.wa.gov/public-health/sexually-transmitted-diseases-std)

