

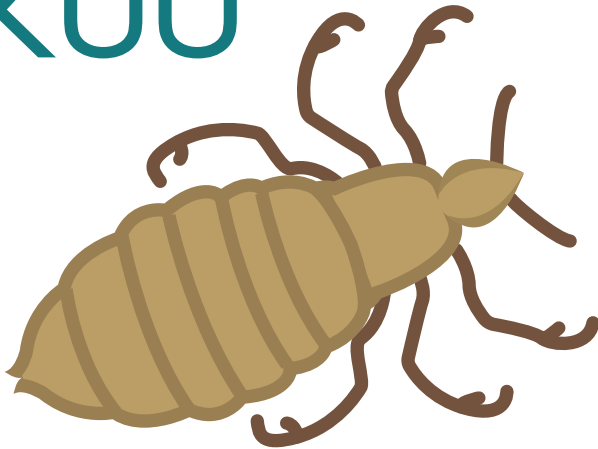


Neenien awora pekin tumwunun aramas ren semwen

An ewe Sukuun Tumwunun Semwen me Feiengaw

A fer non 6/4/24

KUU



Ifa usun ekkewe kuu ra teefetan?

Ekkewe kuu nein mekurach ra kan te (rese tongeni mwet ika chang), iwe ra tongeni teeta won emon ika pwe mekuran a kan ngeni mekuren na emon.

Fan ekkoch ra kan te ngeni emon nupwen ra kan aea fengen pisekir kewe usun uuf ewe kuu a teeta won ewe emon seni ewe pisek ika a turutiw ewe kuu iwe a teeta won ewe emon.

Kuun nein Mekurach ese wor semwen reer repwe ngeni ekkoch.

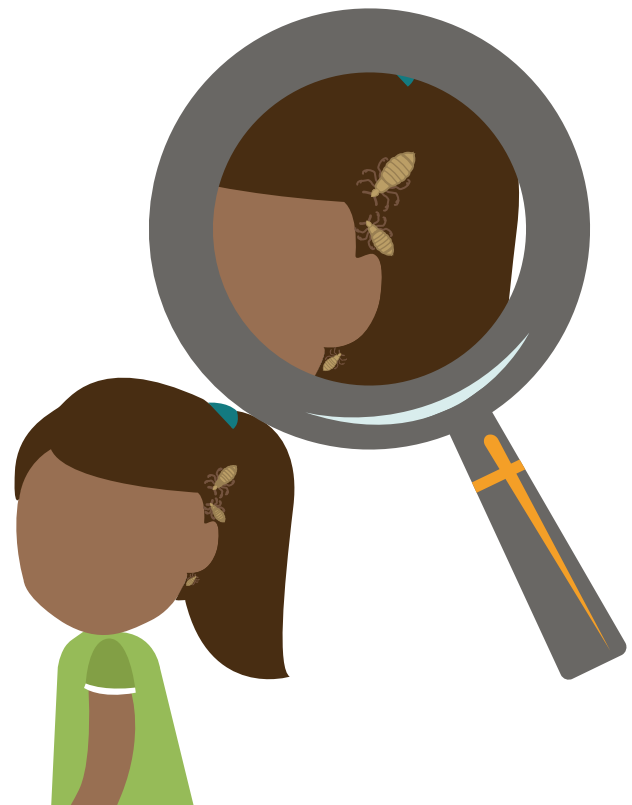
Ika sia kuna pwe a wor kuun emon kukun sia fokkun ningeringer, nge iei ew metoch a fis ngeni chommong famini. An wor rech kuu esapw ita wewen pwe ewe emon ese nimech ika imwan ese nimech.

Ekkewe kuu a koon wor ren ekkewe kukun semirit ra kan fiti ekkewe sukunen tumwun semirit, chon sukunen enemeteri, me ekkewe ra nonomw fengen me ekkewe mi wor kuur. Nge a kan teeta won emon mi kan mekuran ngeni mekuren ewe emon mi wor kuuwan.

Ifa usun upwe kuttaechuw ekkewe kuu?

Kopwe kutta ekkewe man mi kung ra tennaw ika ekkewe sokuun mi chek pacheta won meten mekurach:

- Won sekkun mekurach, akaewin arapakan ngeni epinukuuch
- Nukun seningach me unukun



KUUN NEIN MEKURACH (cont)

Ifa usun upwe awesano kewe kuu?

Akkomw, safeeni ngeni mekuren ewe kukun ekkewe safei sia chek meni seni ekkewe sitowa ika safei seni ewe tokter.

Mwirin, feri ekkewe metoch mi namwot omw kopwe feri pwe kewe kuu resapw chiwen nonomw non iwomw:

- Sopwuni non mwesin me apwasa kewe pisek, chechen bed, me pwan ekkoch pisek ewe semirit a pipisek ika aea non ekkewe ruuw ran a safei mekuran.
 - Aea ewe konik mi pwichikar (130 pwichin) non ewe mwesinen soopw me apwasa pisek won ewe high heat non ewe mwesinen apwas.
 - Ekkewe pisek rese tongeni soopw ra tongeni soopw ren dry cleaned ika waanong non pwotow punastik ren ukukun ruuw wiik repwe nonomw non.
- Kopwe sooni koomw me pirosun mekur non konik mi pwichikar (at least 130n pwichin) ren 5-10 minich.
- Vacuum ewe simen me pisek ren nenien momot, awenewenen ikewe ia ewe semirit a momot ie ika kokon.
- Kosapw aea ewe fumigant spray. Mi efeiengaw ika sia ngaseri ika pwan tonong non unuchen inisich.



Ifa usun upwe eppeti kuu?

- Tumwunuw pwe ousapw kane fengen mekuremi atun ouwa urumwot non iimw ika sukuun (Fansoun kukunow non samer, pekin urumwot, me paari mi apwapwa).
- Kosapw aea ngeni ekkoch akkaw, pwenupwenun mekurach, ufach mi maanun, ufach fan iten urumwot, ika pisekin feri mekurach.
- Kosapw aea ngeni ekkoch koomw, pirosos, taaun.
- Cheki nein mekuromw ren kuu me sokunen kuu iteitan.

Ekkewe kuu ika ra turutiw seni emon aramas iwe resapw manawatan mwirin me resapw tongeni mwenge, me meni ewe kuu epwe teekikich seni ewe soof, carpet, ika ekkewe neeni mi kukkun.

Kosapw anea watte fansoun me neunew watte mwoni ren pisekin nimenimen non iimw!

Ren ekkoch pworousan, keru ewe Clark County ADA Office 564.397.2322/711 ika 800.833.6388/ADA@clark.wa.gov

Kae pwan ekkoch pworous usun kuu: www.cdc.gov/lice/about/head-lice.html