

26-31 Parks and Lands Capital Improvement Plan

Clark County Council Work Session

October 15, 2025

Presented by County Parks and Nature Division
and Lands Management Division

David Stipe, Planning and Development Manager
Ross Hoover, Division Manager



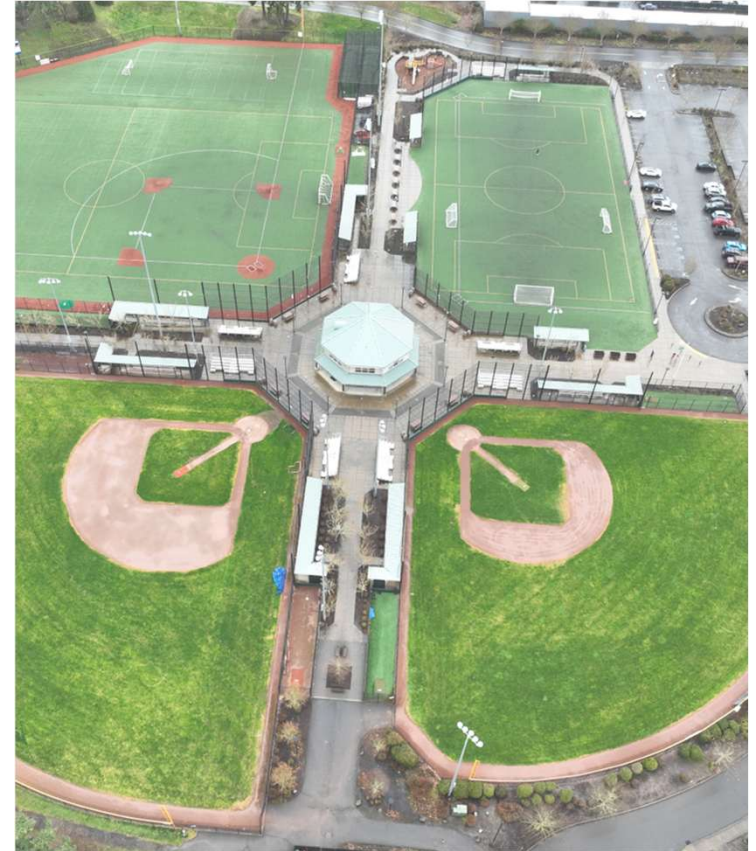
Agenda

- **Introductions**
- **Clark County Parks and Nature Overview**
- **Capital Plan Overview**
- **Capital Planning Process**
- **Timeline Next Steps**
- **Questions**



Clark County Parks and Nature By the Numbers

- ❑ 6,166 acres – Parks
- ❑ 4,300 acres- Legacy Lands
- ❑ 111 parks and site



Why Parks and Nature

- ❑ Growth Management Act
- ❑ WAC 365-196-440
- ❑ RCW 36.70A.020
- ❑ Clark County Comprehensive Plan
- ❑ Parks, Recreation, Open Space Plan



Capital Planning

- ❑ The Adopted PROS Plan identified gaps in service
- ❑ The Capital Plan prioritizes projects to address the gaps identified in the parks system.



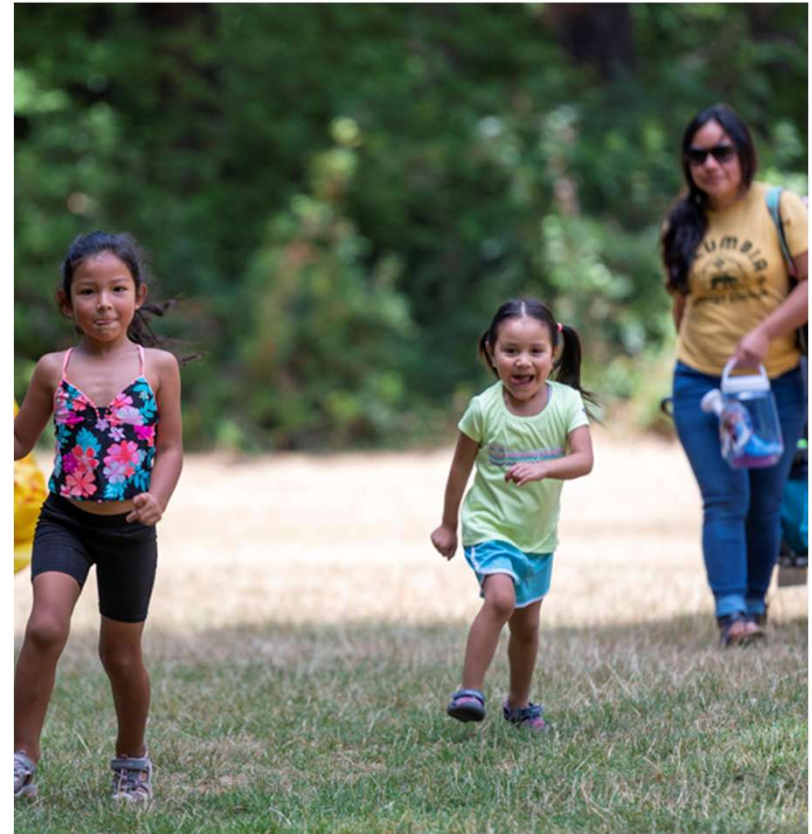
Why Parks and Nature

Clark County Parks and Nature enriches communities by creating and stewarding parks that promote health and wellness, boost economic vitality, preserve natural areas, and ensure access to the outdoors for all.



Why Parks and Nature

- Access
- Sustainable Stewardship
- Economic Vitality
- Health and Wellness



Capital Plan Elements and funding sources

- ☐ Major Maintenance
 - Real Estate Excise Tax (REET2)
- ☐ Stewardship Capital Improvements
 - Park Improvement Fees (PIF) and Grants
- ☐ New Park Capital Development
 - Park Improvement Fees (PIF) and Grants
- ☐ Park Acquisition
 - Park Improvement Fees (PIF) and Grants
- ☐ Legacy Lands Acquisition
 - Conservation Futures Funds (CFP) and Grants
- ☐ Park System Planning
 - GCPD Levy



2025 Major Maintenance Projects

Completed or Underway

Felida Parking Lot and Trail Renovations
Frenchman's Bar Regional Park RV Host Site
Luke Jensen Field One Turf Replacement
Lewisville Regional Park Roof Replacements

On-going Projects (Design and Permitting)

Lacamas Regional Park Bridge Replacement
Klineline Pond Bridge Footing Repair
Lewisville Regional Park Bridges Replacement
Bosco Farms Neighborhood Park
Playground Shade
Hazel Dell Community Park Playground Replacement



2025 Stewardship and New Park Capital Projects

Completed or Underway

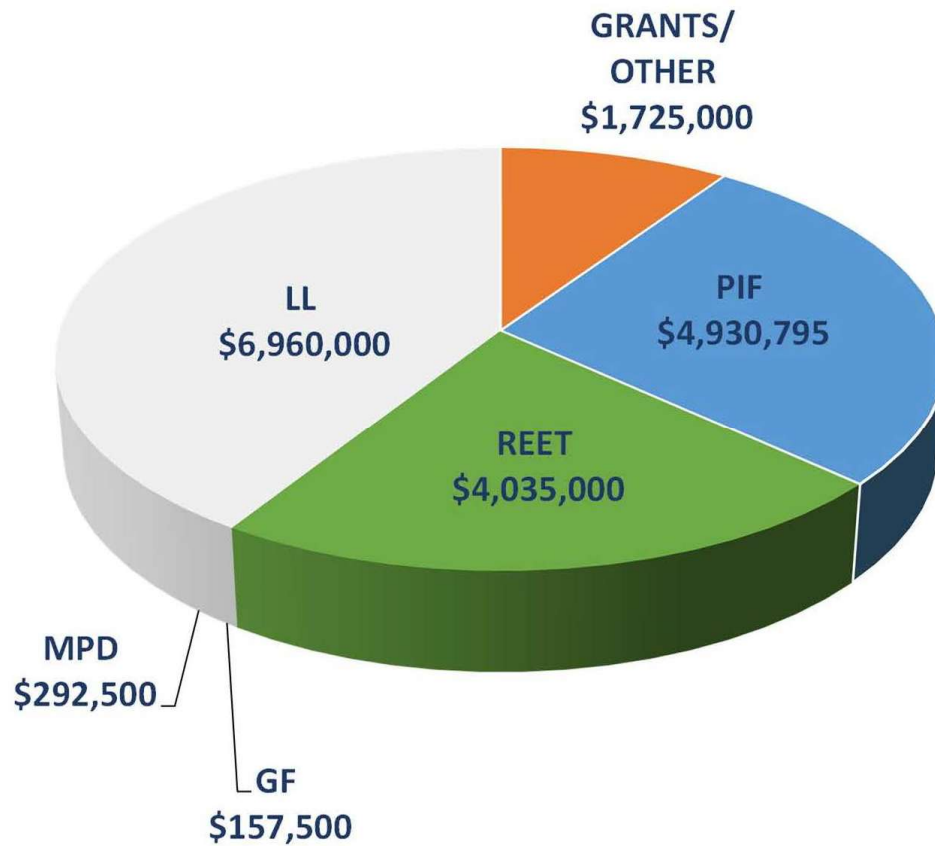
Curtin Creek Community Park Development
Harmony Sports Complex Parking and Circulation
Hockinson Community Park Trail Improvements
Heritage Farm Cougar Creek Wetland

On-going Projects (Design and Permitting)

Cougar Creek Woods Property
Frontage Improvements
Foley Orchards Property Frontage Improvements
Orchards Community Park Improvements
Klineline Pond Area Improvements
Pacific Community Park Improvements
Heritage Farm Public Access Improvements



2026 Fund Allocation



- ❑ 27% Park Impact Fees
- ❑ 22% REET 2
- ❑ 39% Legacy Lands
- ❑ 10% Grants/Others
- ❑ 01.6% Metro Parks District
- ❑ 0.4% General Fund

Fund Allocation Trends

Fund	22-27 Adopted CIP	23-28 Adopted CIP	24-29 Adopted CIP	25-30 Adopted CIP	26-31 DRAFT CIP
REET2	\$24,908,200	\$33,943,204	\$28,971,924	\$22,317,247	\$20,875,000
PIF Funds	\$8,338,000	\$17,480,000	\$16,752,427	\$28,039,834	\$31,060,795
Other (Grants)	\$4,317,000	\$5,645,566	\$4,517,041	\$5,967,041	\$3,545,000
General Funds	\$0	\$1,810,000	\$3,929,250	\$340,000	\$192,500
GCPD Levy	\$1,478,000	\$3,340,000	\$3,680,750	\$505,000	\$357,500
Legacy Lands Funds	\$12,075,000	\$14,975,000	16,301,300	\$17,505,000	\$20,755,000
1013 Camp Bonneville	\$0	\$0	\$0	\$0	\$0
1014 Timber	\$0	\$0	\$0	\$660,000	\$260,000
Total	\$51,116,200	\$77,193,770	\$74,152,692	\$75,334,122	\$77,045,795



Stewardship Capital Project Schedule

Project	2026	2027	2028	2029	2030	2031
Luke Jensen Sports Complex	Design	Construction				
Salmon Creek CP Improvements	Design	Construction				
Daybreak RP Redevelopment	Planning					
Hazel Dell CP Improvements	Construction					
Hockinson CP Improvements		Planning	Design			
Lewisville RP Improvements		Planning				
Orchards CP Improvements	Planning	Design		Construction		
Pacific CP Improvements	Design		Construction			
Whipple Creek RP Improvements	Planning	Design	Construction			
Camp Bonneville RP Development		Planning				
Pleasant Valley CP Improvements		Planning				
North Fairgrounds CP Improvements				Planning		

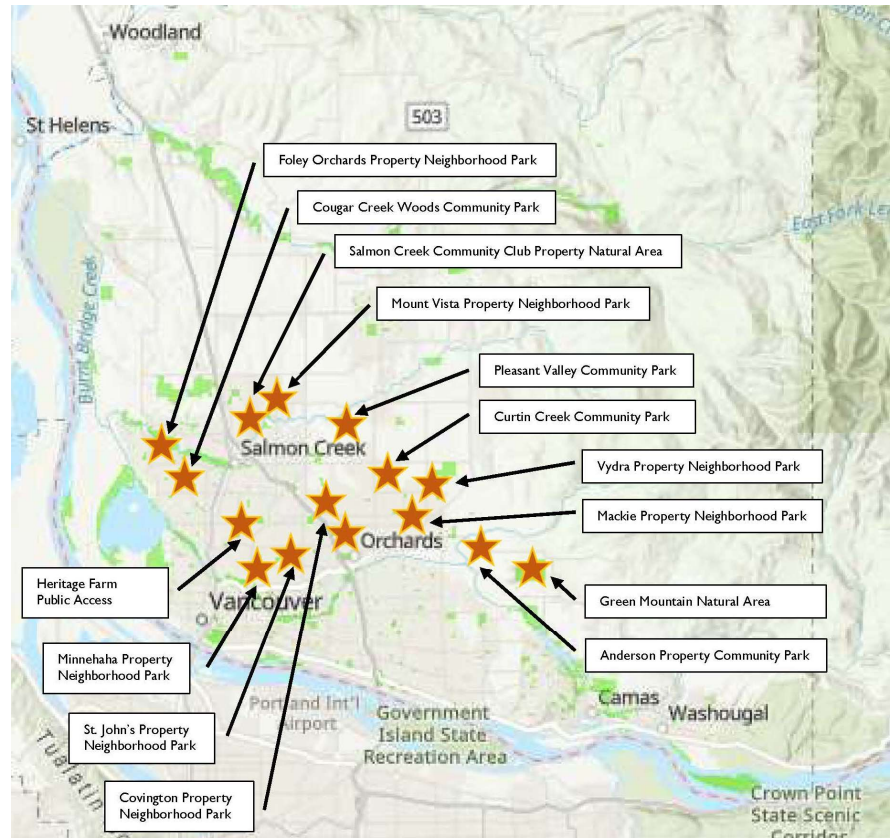
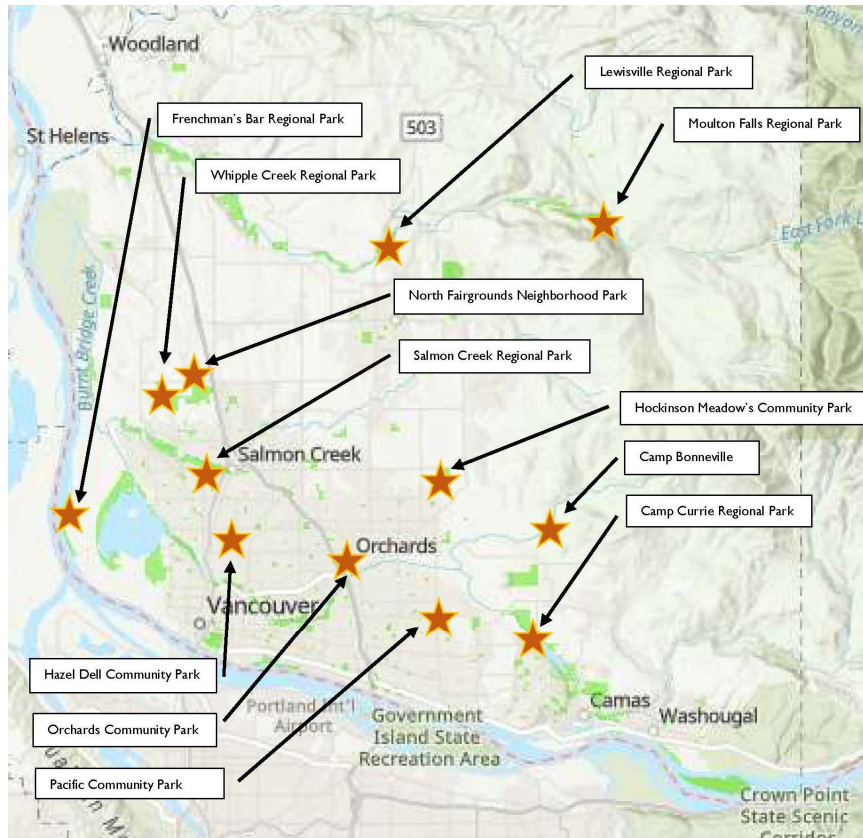


New Park Capital Project Schedule

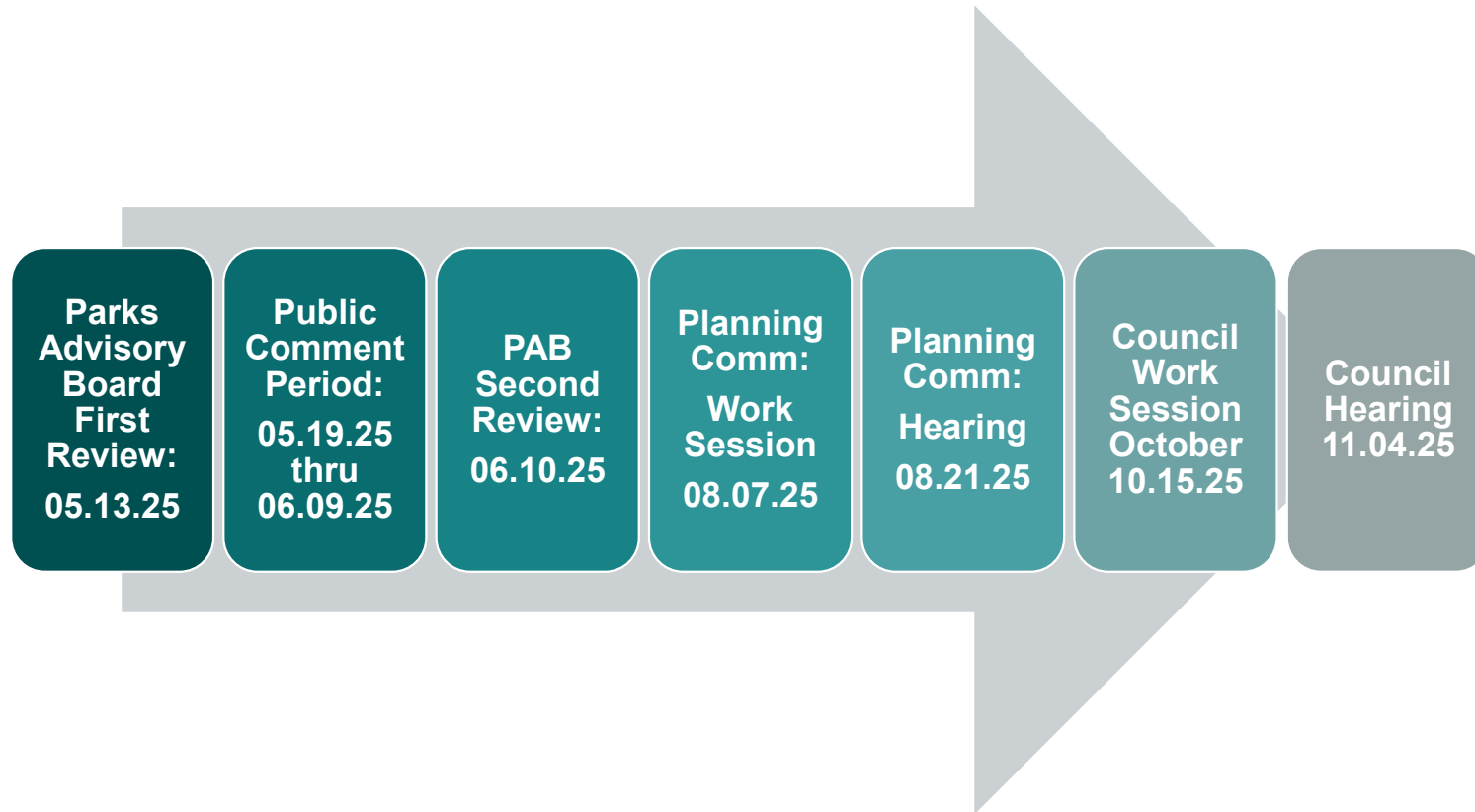
Project	2026	2027	2028	2029	2030	2031
Green Mountain Natural Area	Planning					
Heritage Farm		Construction				
Anderson Community Park		Planning		Design		
Minnehaha Neighborhood Park		Design	Construction			
Mt Vista Neighborhood Park		Design	Construction			
Saint John's Neighborhood Park		Planning		Design		
Salmon Creek Community Club Neighborhood Park		Planning		Design		
Bratton Canyon Regional Park		Planning				
Vydra Neighborhood Park		Planning			Design	
Prairie Sports Complex			Planning		Design	Construction
Cougar Creek Woods Community Park			Planning	Design	Construction	
Covington Community Park				Planning		
Lewis River Greenway				Planning		
Lake Rosannah Natural Area					Planning	
Mackie Neighborhood Park						Planning



Capital Project Distribution



Planned Public Process



Questions?



Further Questions and Comments to -

Capital Program Contacts:

David Stipe
Planning & Development Manager
Public Works, Parks & Lands Division
david.stipe@clark.wa.gov
564.397.5881

Justin Morgan
Capital Program Specialist
Public Works, Parks & Lands Division
justin.morgan@clark.wa.gov
564.397.5883

