

Clark County Homeless Action Plan Steering Committee

Meeting 3: Existing
Conditions Review

June 11, 2025



- Welcome and Group Agreements
- Environmental Scan Approach
- What is Working Well?
- What is Not Working Well?
- Where Should Clark County Focus Going Forward?
- Discussion and Questions

- **Be present:** Avoid distractions/multi-tasking.
- **Take space and make space:** Let's ensure that everyone gets a chance to speak or contribute in some way.
- **Accept non-closure:** We won't always have all of the answers by the end of our meeting time.
- **Address differences intentionally and respectfully:** Acknowledge harm and attend to the impact of your behavior/comments. Acknowledge that we are working toward the same goal.
- **Be mindful of the current political and economic context:** Policy changes, news, events, and ongoing political struggles may inform how we show up to each meeting and what limitations we may face in the solutions we propose.

Environmental Scan Approach

Engagement and Council for the Homeless Data

How did we conduct our environmental scan?



Steering Committee Meeting #2
Needs Assessment



Lived Experience Focus Groups



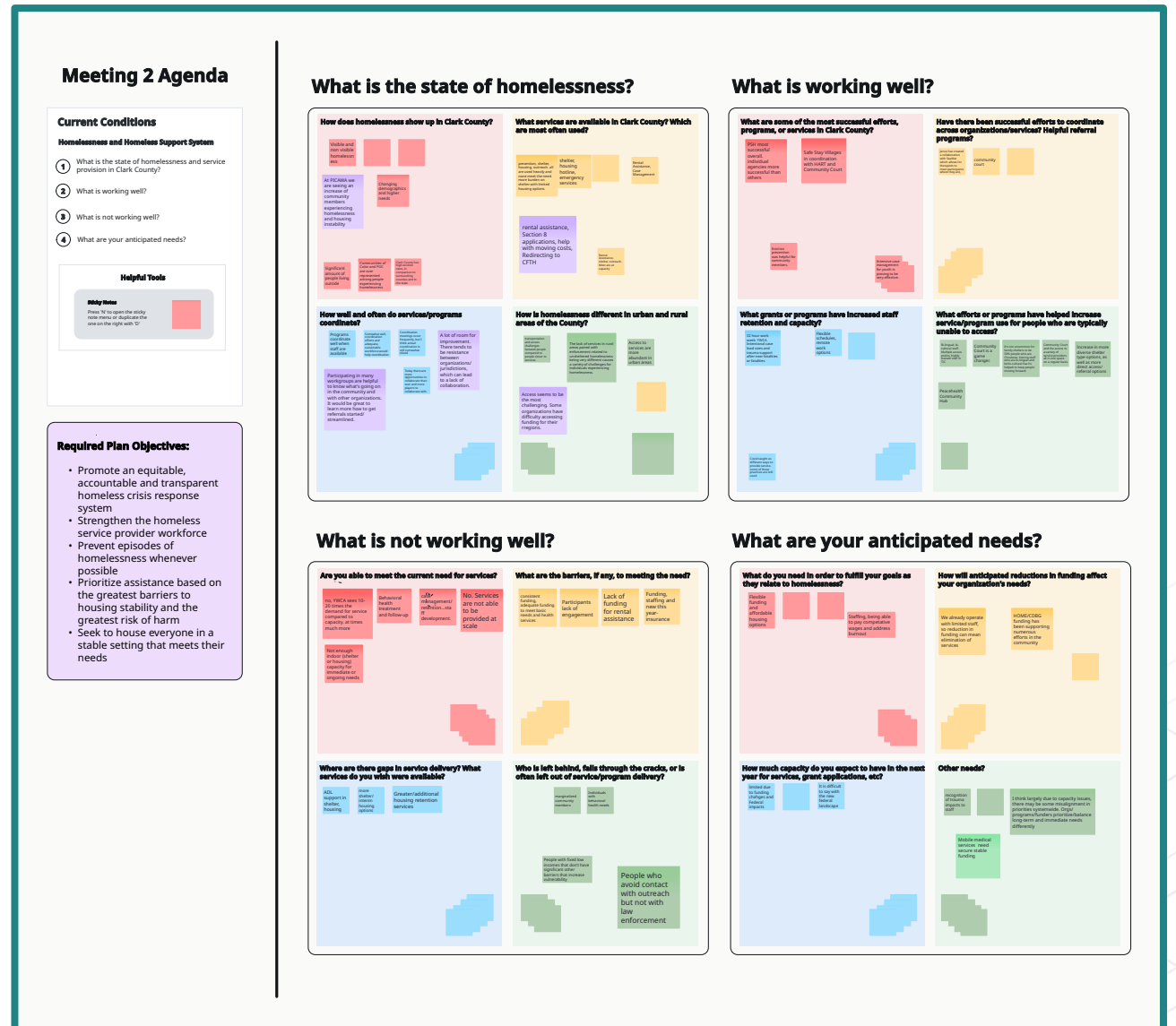
Council for the Homeless Data
Collection

Steering Committee Needs Assessment



Our whiteboard exercise allowed us to discuss...

- The state of homelessness
- What is working well
- What is not working well
- Service providers' anticipated needs



Lived Experience Focus Groups



Similarly, the Lived Experience Focus Groups discussed what is working well, what is not working well, and what should change in the future.

- **Thank you** for your help with RSVPs!
- **21 Attendees** (12 virtual and 9 in-person)
- **Perspectives included:**
 - Currently homeless
 - Exited homelessness
 - Chronic homelessness
 - Homeless with a family
 - Young adult
 - Veteran
 - Identify as BIPOC

Seeking Participants for Focus Groups:

Help us connect with people who have lived experience of homelessness.

Council for the Homeless and Clark County are updating their 5-Year Homeless Action Plan. To collect valuable insight, we are hosting two focus groups to hear from people with lived experience of homelessness.

Participants will:

- Help provide a better understanding of the current needs of people experiencing homelessness and housing instability
- Identify the strengths, gaps, and barriers in the Clark County homelessness support system
- Identify priorities for the future

We are hosting two focus groups with up to 25 people. We will provide \$75 gift cards to participants. We are asking service providers to provide a list of interested participants by May 19th.

| Virtual Focus Group | In-Person Focus Group |
|--------------------------------|--|
| Date: May 20th | Date: May 21st |
| Time: 10:00am - 11:30am | Time: 1:30 - 3:00pm |
| Location: Zoom Meeting | Location: Bridgeview Resource Center Classroom C & D 505 Omaha Way Vancouver, WA 98661 |

Please send confirmed names to Taylor Burton at burton@econw.com by May 19th

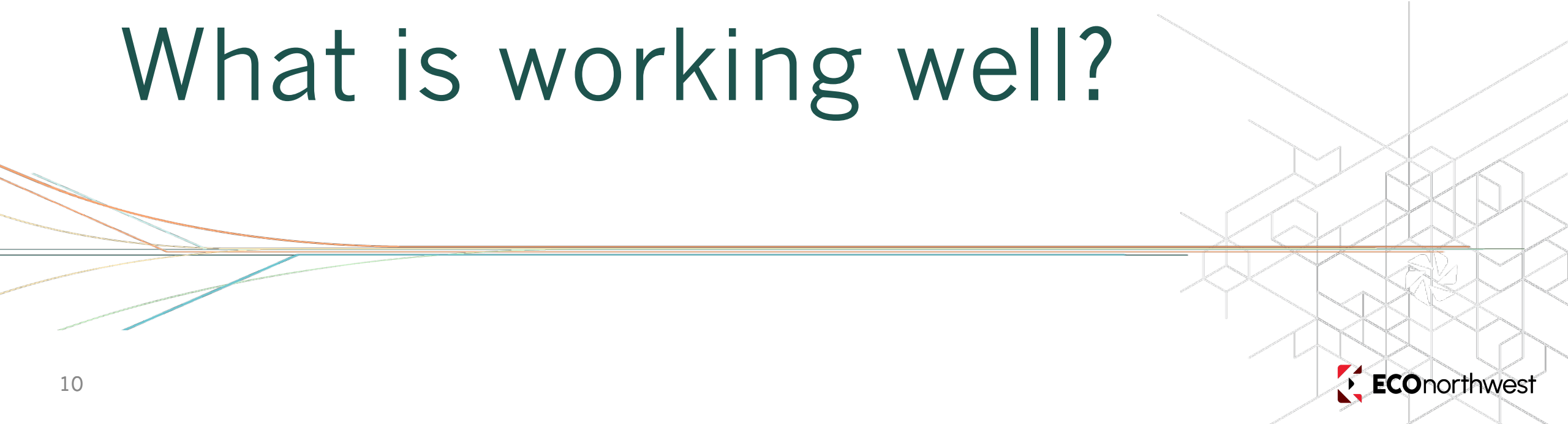


The Council for the Homeless provided data and information on the following:

- Active county-funded service providers
- Total available shelters and programs in Q1 2025
- Total beds by housing intervention, 2023-2024
- Coordinated assessments vs. RRH and PSH entries
- Estimated Emergency and Permanent Housing Need for 2045
- Funding data

- **Focus Group Participants:** Referrals from SWACH, Share Vancouver, Janus Youth Programs, Council for the Homeless, and City of Vancouver
 - ◆ Mostly based in Vancouver, but could serve people outside of Vancouver
- **Funding:** Homeless Crisis Response System funding for Clark County's Department of Community Services
 - ◆ Not representative of entire county's funding
- **Existing Providers, Beds, and Housing Need:** All providers participating in the Clark County CoC HMIS reporting system.
- **Note:** Overlap in use of services = overlap in data counts.

What is working well?





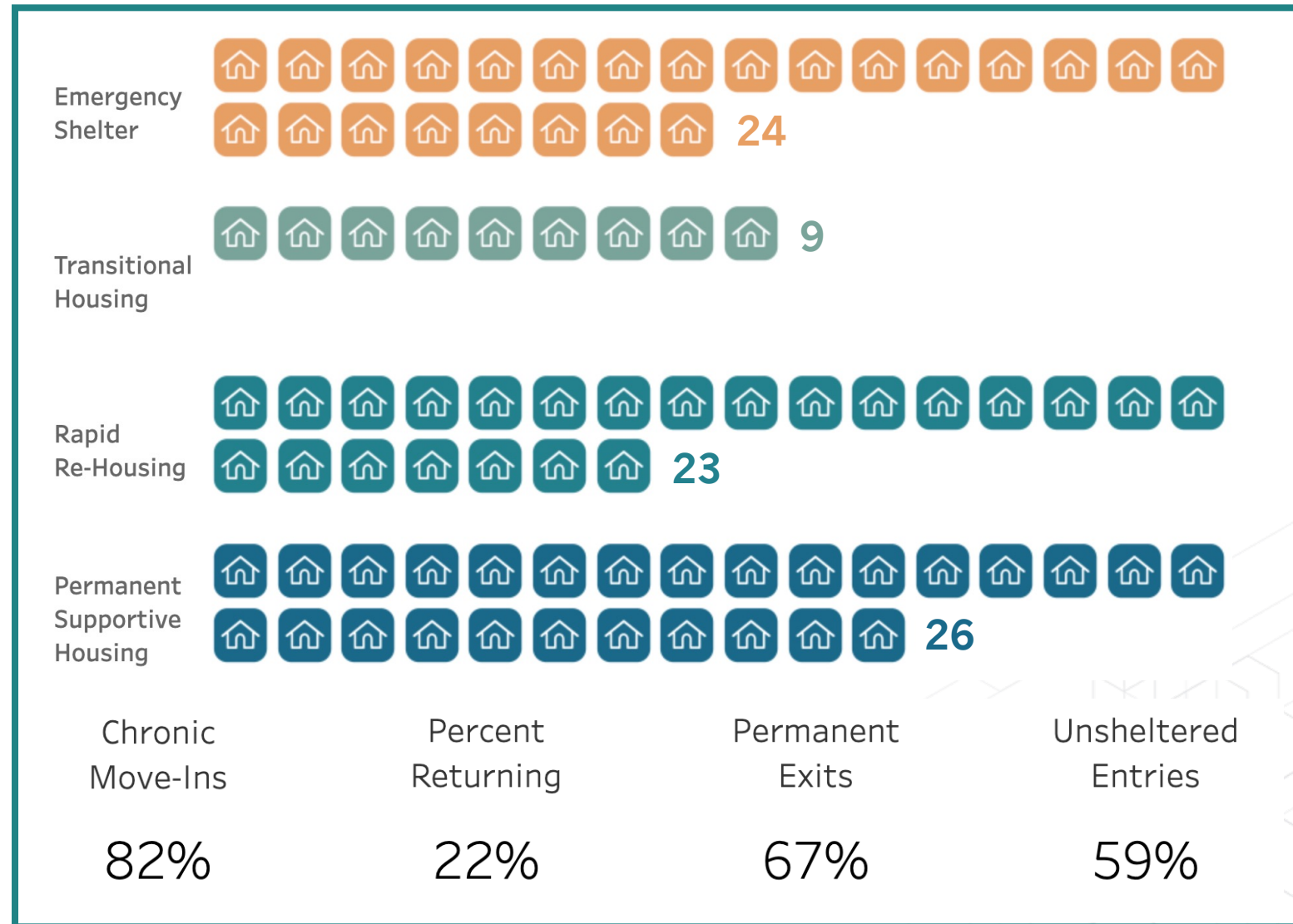
There are several county-funded service providers throughout Clark County:

- Catholic Community Services
- Cascade AIDS Project
- Council for the Homeless
- Impact Northwest
- Janus Youth Programs
- Lifeline Connections
- Pacific Islander Community Association of WA
- Native American Youth and Family Center
- New Life Recovery Services
- Outsiders Inn
- Sea Mar – CSNW
- Share
- YWCA

All Shelters and Programs Available

In Q1 2025, there were 82 operating shelters and housing programs in the County.

Almost 60% of participants were unsheltered and most experienced chronic homelessness.

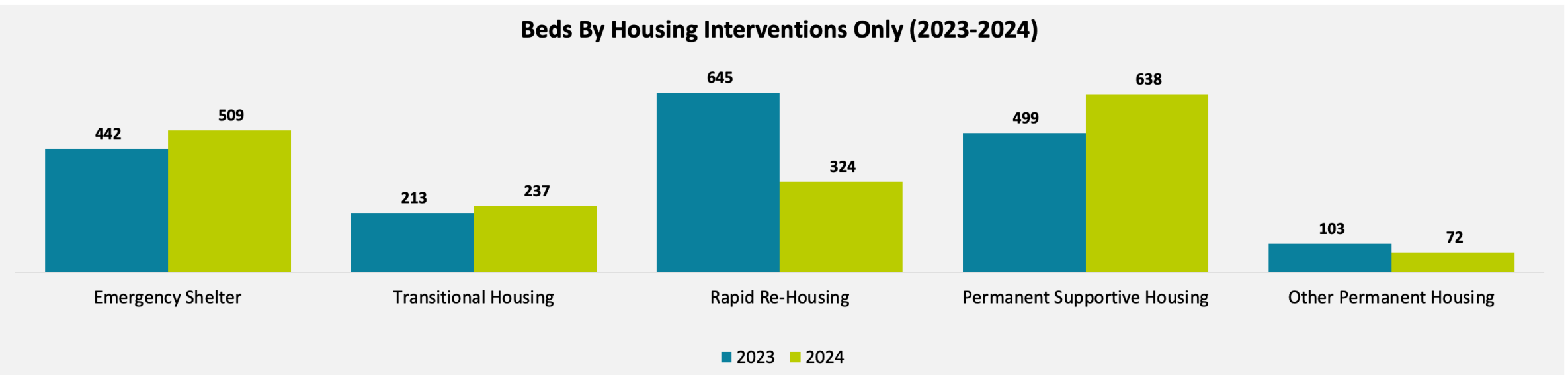


In 2024, Clark County's shelters and housing programs provided 1,780 beds (down 122 from 2023).

Largest decrease: RRH beds.

Increases in most other housing and shelter types.

Beds By Housing Interventions Only (2023-2024)





Noteworthy existing services including financial support, shelter, and outreach, referral, and hotline services. While many of these services are at or over capacity, steering committee members noted some successful programs:

Successful Efforts and Programs

Permanent Supportive Housing

Safe Stay Villages

Eviction Prevention

Intensive Youth Case Management

Successful Coordination Efforts

Community Court (collaboration between DSHS, CFTH, City, County, judge, defense & prosecuting attorney, volunteer lawyers)

Janus and SeaMar Collaborative Efforts

Helpful Staff Retention & Capacity Programs

32-hour work week (YWCA)

Flexible schedules & remote work options

Intentional caseload sizes

Trauma support

Helpful Accessibility Supports

Bilingual and Bicultural Staff

Peacehealth Community Hub

Trauma-Informed Care Training

Diverse shelter types



Focus group attendees said the following services are helpful:

- **Safe Stay Shelters, Safe Parking Spaces, Tiny Homes, and Bridge Shelter units** provide low-barrier options.
- **Community Courts** help prevent the worst outcomes of criminalization.
- **Church & Food Donation Initiatives** help meet basic needs.
- **School transportation** helps children stay in school (ESD 112 and HOPE Transportation)



Source: [City of Vancouver Safe Park Webpage](#)

What is not working well?

Services are struggling to meet the need

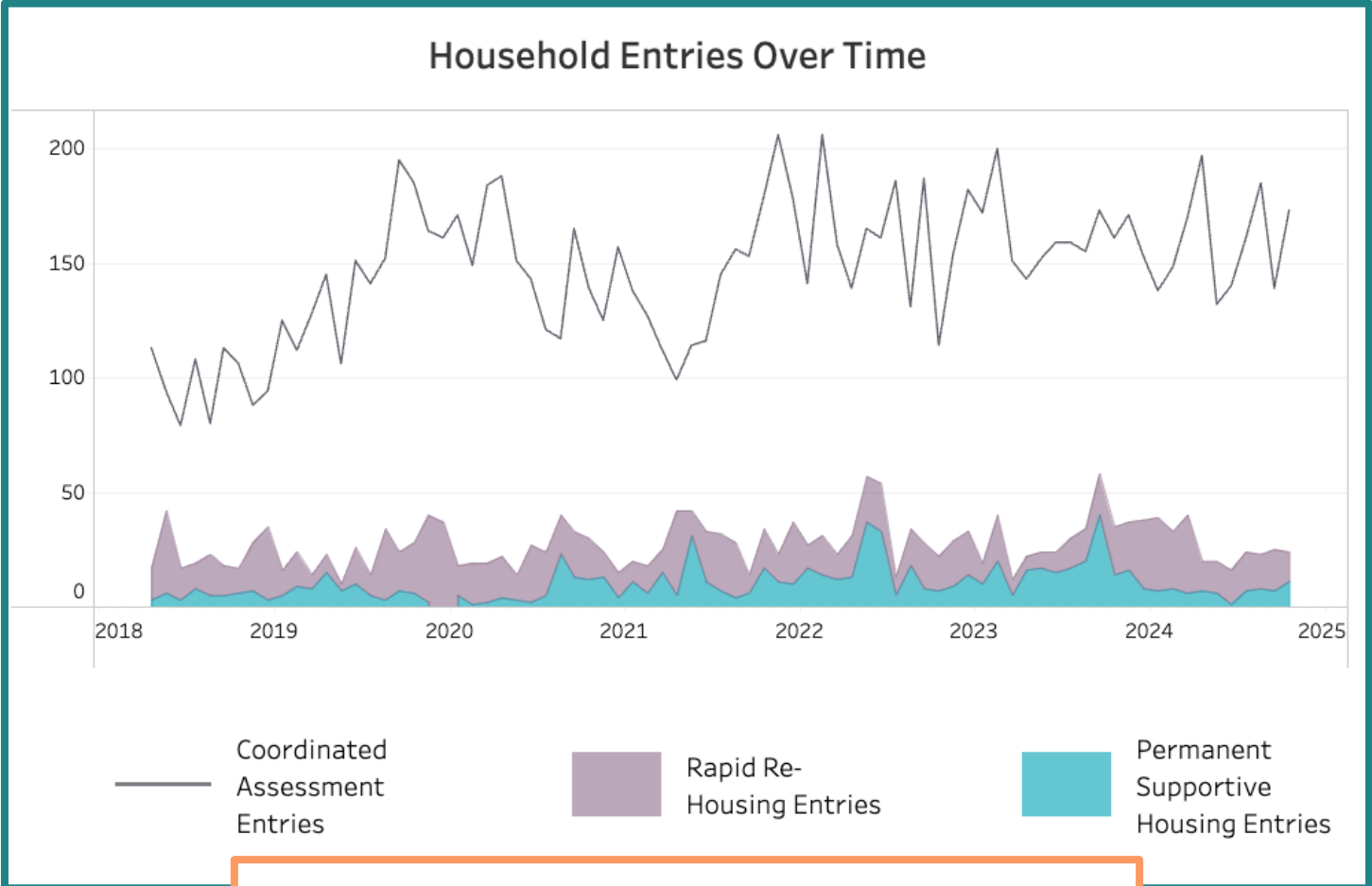


CFTH data show that requests for housing have always far exceeded housing placements.



Service providers report exceeding capacity by 10-20 times.

Reported recruitment and retention issues, and a lack of shelter and interim housing options likely contribute.



| Length of Stay in Program | Time From Entry to Housed | Utilization Rate |
|---------------------------|---------------------------|------------------|
| 136 days | 41 days | 94% |

Services are struggling to meet the need



Focus group attendees also noted limited shelter capacity and long housing waitlists.



Limited shelter capacity, especially for families, women, and people with disabilities.



Long housing waitlists (up to 8 years) and few transitional options.



Fragmented services with inconsistent delivery and staff turnover. Not enough funding for services and programs.

Steering committee members also noted that service provider work is often siloed due to limited staff and capacity.

Projected Beds Needed by 2045



Clark County will need **3,986** emergency beds and **115,705** new housing units by 2045.

Projected Countywide Housing Needs for 2045

| Population Target = 718,154 | Total | Affordability Level (% of Area Median Income) | | | | | | | Emergency Housing/ Shelter Beds |
|---|----------------|---|--------------|--------|--------|---------|----------|--------|------------------------------------|
| | | 0-30% | | 30-50% | 50-80% | 80-100% | 100-120% | 120%+ | |
| | | Non-PSH | PSH | | | | | | |
| Total Future Housing Needed (2045)** | 309,711 | 17,422 | 8,195 | 33,630 | 77,892 | 47,653 | 38,172 | 86,747 | 4,476 |
| Estimated Housing Supply (2020)* | 194,005 | 4,570 | 571 | 16,223 | 60,225 | 37,292 | 28,348 | 46,777 | 490 |
| Net New Housing Needed (2020-2045) | 115,705 | 12,852 | 7,624 | 17,407 | 17,667 | 10,361 | 9,824 | 39,970 | 3,986 |

* 2020 supply excludes homes in recreational use. Supply of PSH in 2020 is beds. However, projections of Net New Housing Needed (2020-2045) are in housing units. See Overview tab for details.

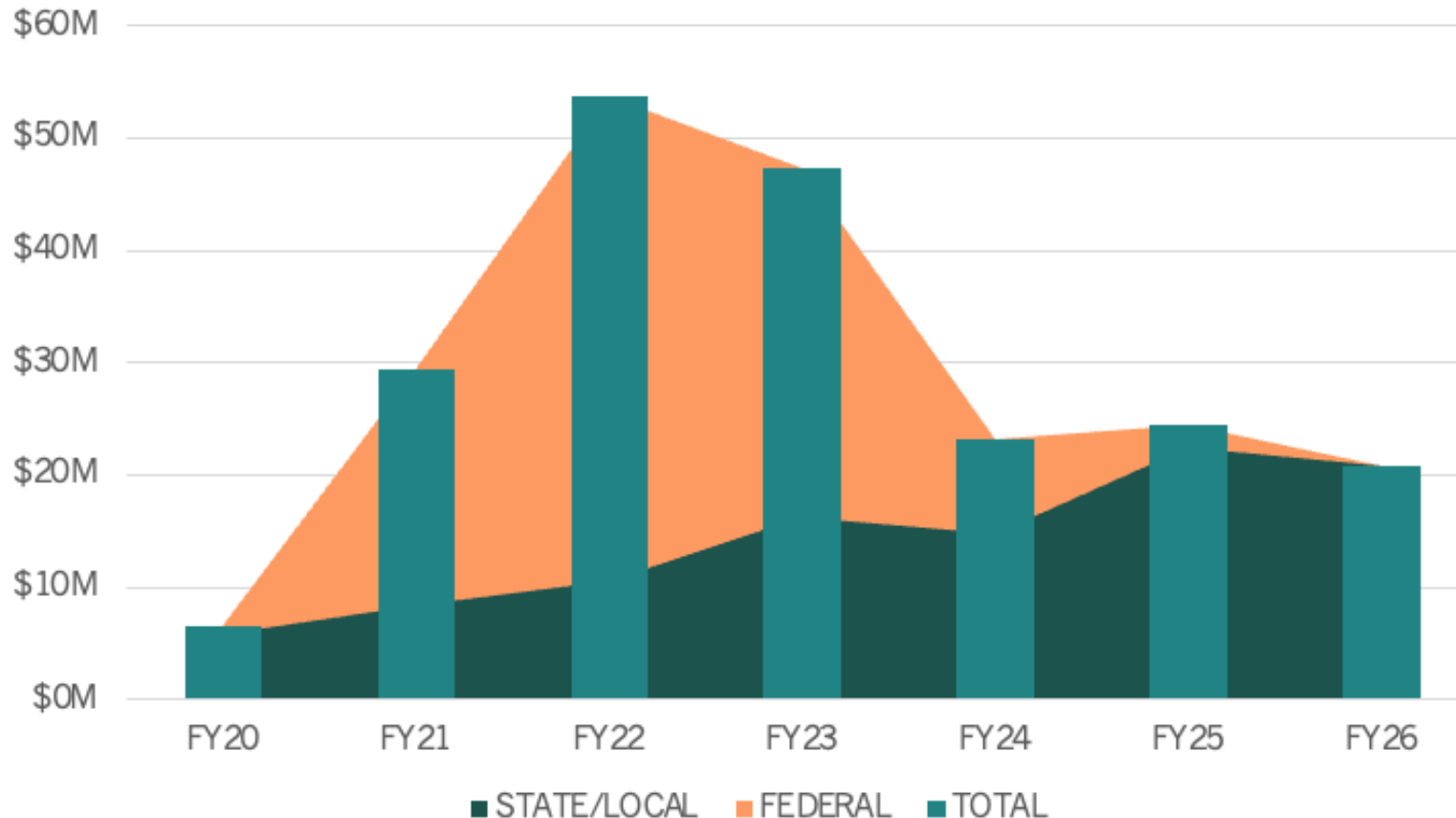
** Total Future Housing Needed (2045) excludes 2020 homes in recreational use.

More funding is needed



Local, state, and federal funding has decreased since 2023 and is projected to decrease further by 2026.

HCRS Investment - Clark County DCS



Steering committee members expressed that there is a lack of consistent and adequate funding.



Focus group attendees attributed lack of shelter and fragmented services to a lack of funding.



Focus Group Findings:



High costs & limited housing availability—deposits, rent hikes, few truly affordable units.



Resource access barriers: application complexity, transportation gaps, tech limitations.



Laws & policies (e.g., camping bans, criminal/eviction records) further marginalize people.



Steering Committee Findings:

Additional Gaps

Need for additional housing retention services

Need more “Activities of Daily Living” support in shelters and housing

Who’s Left Out?

Marginalized community members

Individuals with behavioral health needs

People with fixed low incomes

People who avoid outreach contact

What does Clark County need to focus on in the future?

Steering Committee Anticipated Needs



Steering committee members identified the following anticipated needs for the future:

Needs to Fulfill Goals

Flexible funding and affordable housing options.

Additional staff and ability to provide competitive pay.

Recognition of trauma impacts to staff.

Consistent prioritization of long-term vs. immediate needs between organizations, programs, and funders.

Future Federal Landscape Impacts

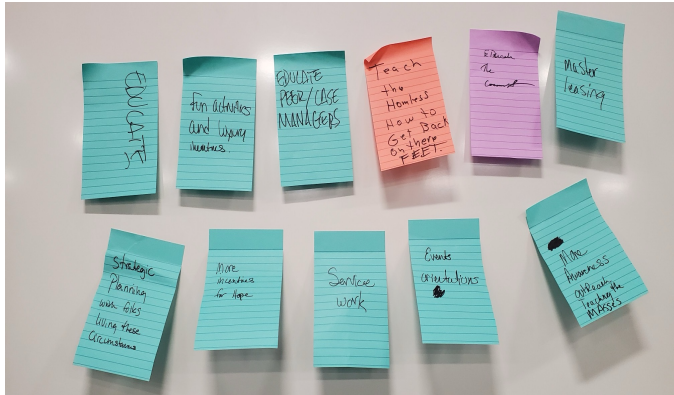
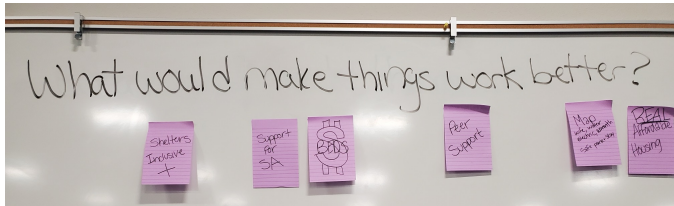
Reductions in federal funding may result in service providers needing to cut specific services and programs.

It may also result in reduced staff retention and recruitment due to inability to provide competitive pay or support programs that support staff mental health.

Focus Group Recommendations



Focus group attendees recommended the County accomplish the following:



- **More shelter beds and low-barrier emergency housing options**, especially for families, women, and people with disabilities.
- **Expand affordable and transitional housing options.** Consider hotel conversions.
- **Strengthen case management** by adding more cultural competency, lived experience, and staff support.
- **Consolidate services** and increase funding for stability and access.
- **Support education & outreach** for service providers, people experiencing homelessness, and the public.
- **Provide practical supports**, including mobile auto repair, pet care, hygiene kits, resource maps.
- **Remove camping bans**, particularly near resources that people need to access.

Discussion and Questions

- Did anything from the focus groups surprise you?
- Are there aspects of what's working well that leave marginalized communities behind?
- Are there aspects of what's not working well that hit marginalized communities more severely?
- Is there anything that is missing from these findings?