

Tools for reducing waste

Clark County Public Works



Clark County Green Schools can assist your school in your waste reduction goals. We can provide the tools for your school to recycle more and compost food scraps.

For more information, info@clarkgreenschools.org

CLASSROOM/OFFICE RECYCLING



32 GALLON BRUTE CAN
for central collection areas
22" diameter 27.25" tall



"SLIM JIM" for copy rooms,
library 22.5" wide 30" tall
11" deep



"CLEARSTREAM" for
hallways, cafeteria in middle
and high schools 26.5" wide
42" tall 20.5" deep



CLASSROOM RECYCLE
BIN for classrooms or high-
volume offices 21" wide 15"
tall 16" deep



DESKSIDE RECYCLING
CAN & GARBAGE SIDECAR
for offices 10.5" wide
15.25" tall 15" deep

CAFETERIA/KITCHEN



SORT TABLE for elementary & middle school cafeterias
30" wide 96" long 30.5" tall

Accessories include: signs, white 5-gal bucket & filter, blue ring, black ring, 32-gal blue Brute, 2 "Nifty Nabbers."
Note: garbage can is not provided



"SLIM JIM" for kitchen 22.5" wide 30" tall 11" deep



5-GALLON BUCKET for kitchen prep 12" diameter 15" tall

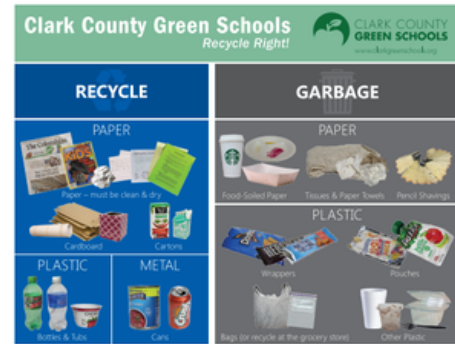


"NIFTY NABBERS" for removal of contaminants from food waste cart in cafeteria, 18" or 36" long

SIGNAGE



CUSTODIAL RECYCLE GUIDE for custodial reference 11" wide 8.5" long



CLASSROOM RECYCLE GUIDE for classroom reference 11" wide 8.5" long

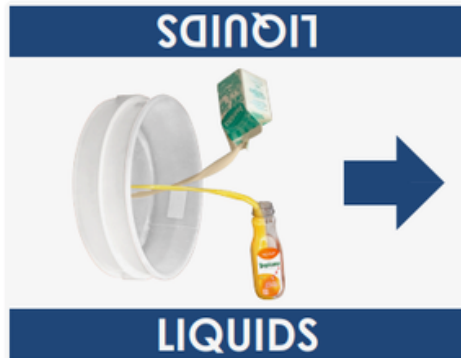


KITCHEN FOOD WASTE GUIDE for kitchen reference 8.5" wide 11" long



KITCHEN RECYCLE GUIDE for kitchen reference 8.5" wide 11" long

SIGNAGE CONT.



SORT TABLE SIGNS* for
sort table instructions 11"
wide 8.5" long *Other
formats available